

*Supplemental material 6 corresponding to manuscript: “Cost-effectiveness Models for Alzheimer’s disease and related dementias: IPECAD Modelling Workshop Cross Comparison Challenge”. See [www.ipecad.org](http://www.ipecad.org).*

**SUPPLEMENTARY MATERIAL 6: ADDITIONAL OUTCOMES**

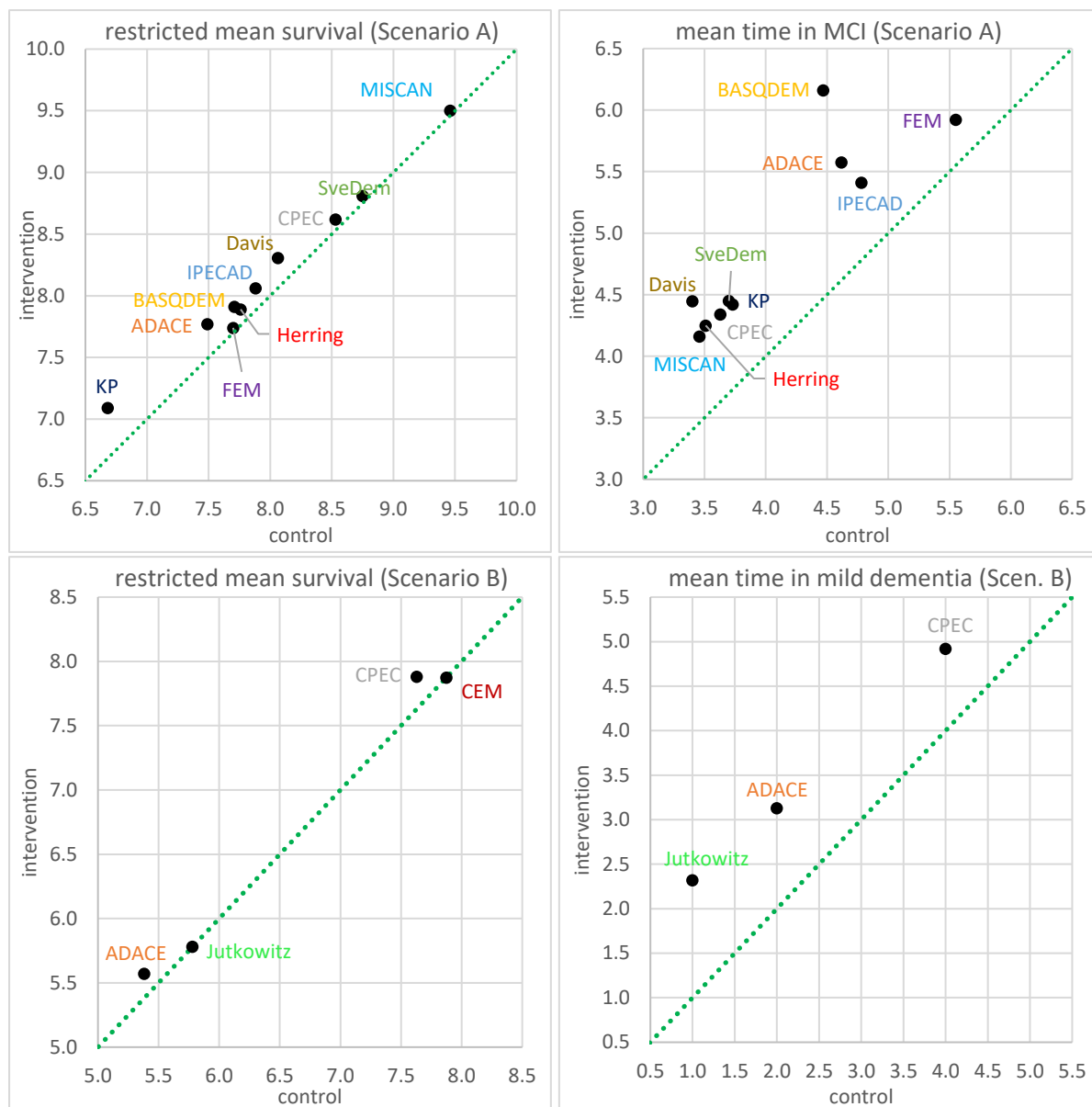


Figure S6.1: Model outcomes in terms of restricted mean survival (left column) and mean time (years) in MCI or mild dementia (right column) for scenario A starting in MCI (top row) or scenario B starting in mild dementia (bottom row) in the control (x-axis) and intervention (y-axis) group over a 10-year time horizon; diagonal to aid viewing the difference between them.

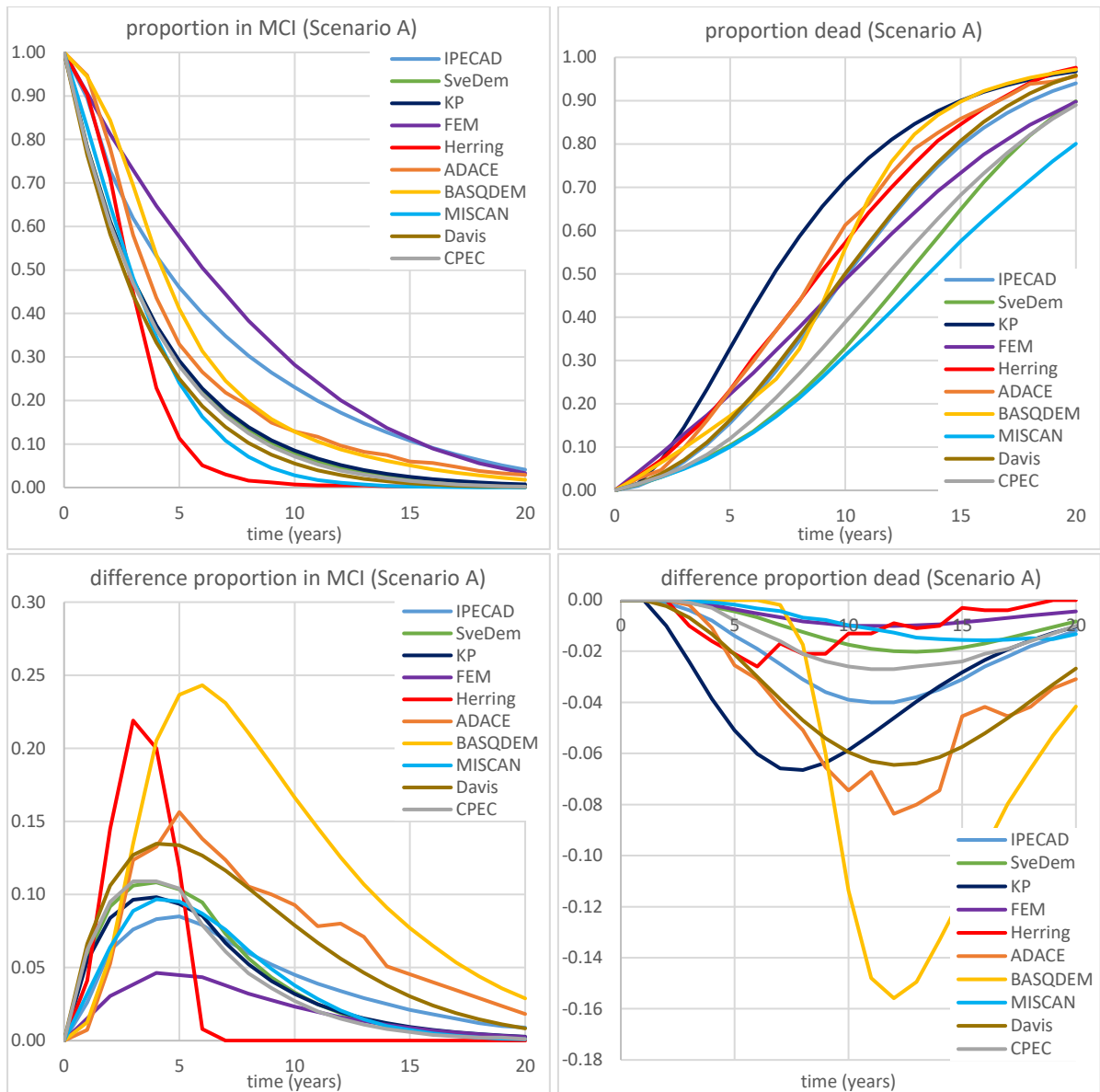


Figure S6.2: Model outcomes in terms of proportion in MCI (left column) and proportion dead (right column) in the control group (top row) and the difference (intervention minus control setting) in these outcomes between the control and intervention group (bottom row) in scenario A (starting in MCI).

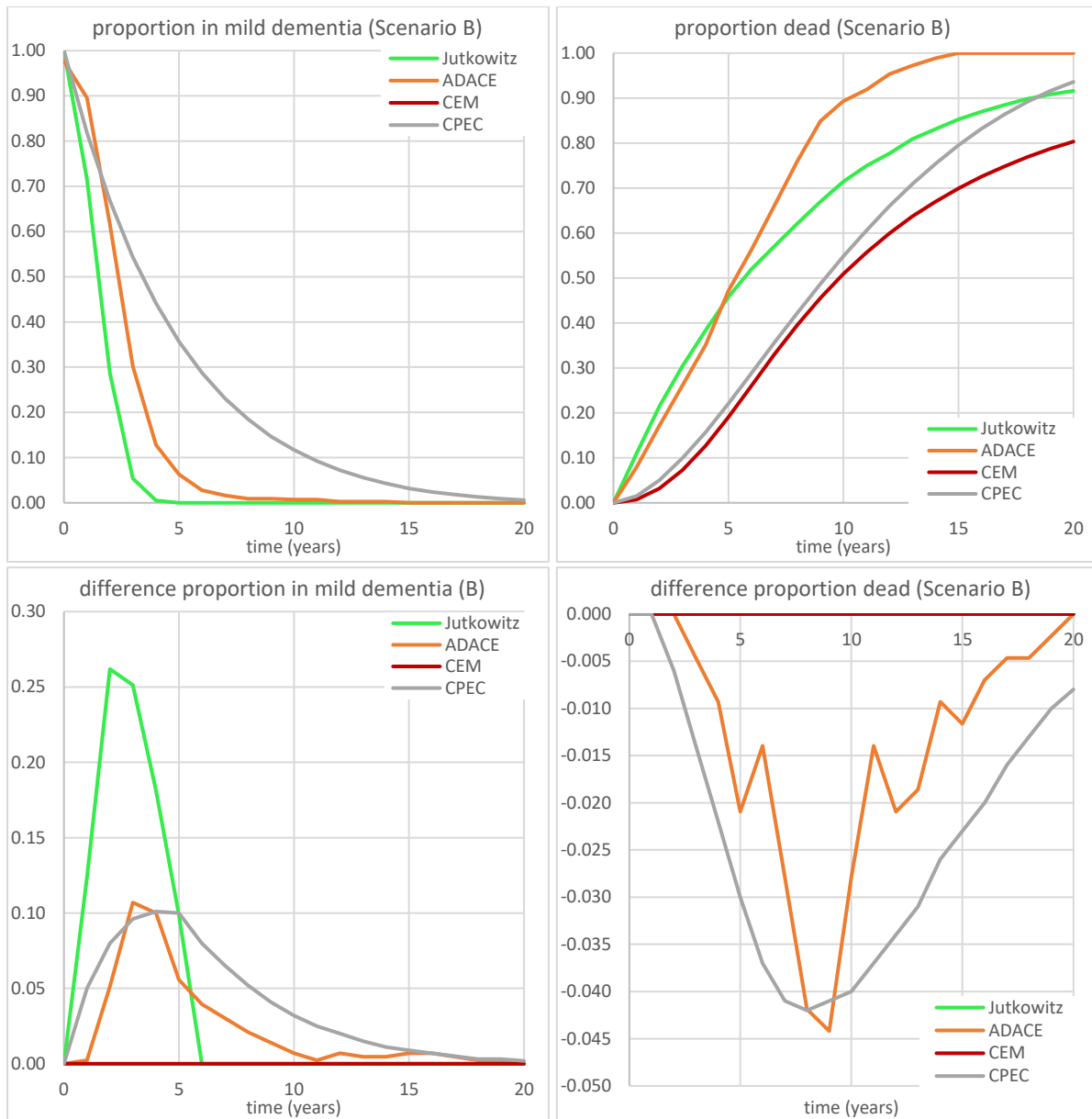


Figure S6.3: Model outcomes in terms of proportion in mild dementia and proportion dead in the control group (top row) and the difference (intervention minus control setting) in these outcomes between the control and intervention group (bottom row) in scenario B (starting in mild dementia).