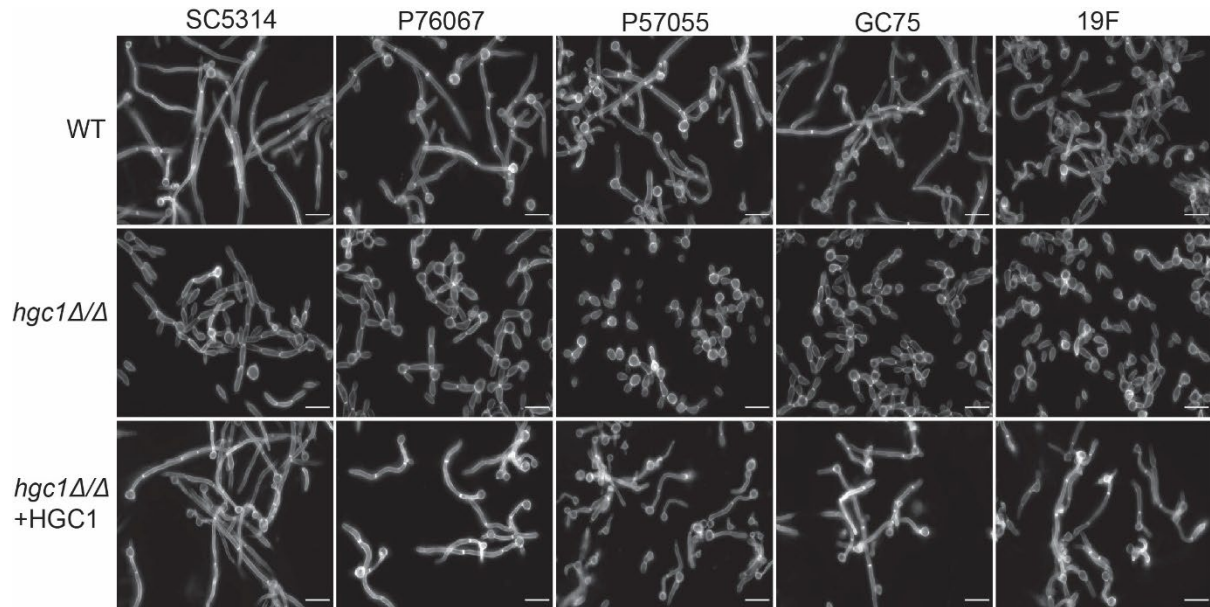


**Supplementary Figure S1**



**Fig. S1: Filamentation assay of reconstituted strains.** The *HGC1* allele from SC5314 was reconstituted in the mutants of all clinical isolates. The reconstituted strains were grown in RPMI + 10% serum at 37°C for 4 hours alongside wild-type and *hgc1Δ/Δ* mutant strains in the corresponding clinical isolate backgrounds. Fixed cells were stained with Calcofluor-white and imaged using fluorescence microscopy. The white scale bars in each panel are 16 μm in length.