

Supplementary Figure S3

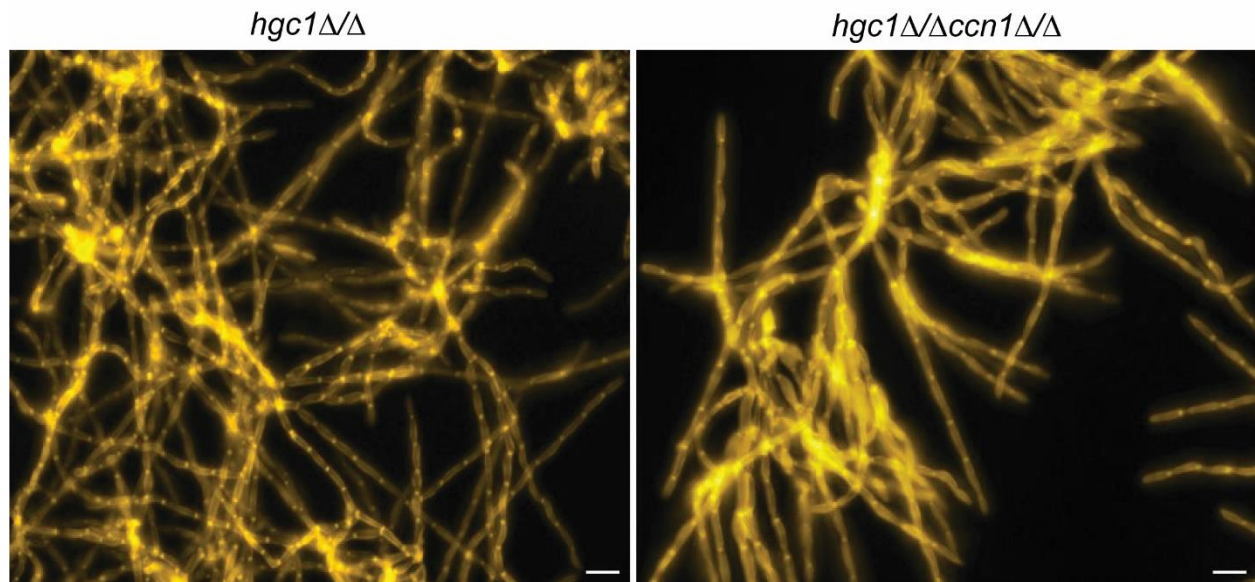


Fig. S3: Hyphal growth during biofilm formation in SC5314 *hgc1ΔΔ* and *hgc1ΔΔccn1ΔΔ* mutants. Apical view projections from the biofilms of the indicated strains were obtained using maximum intensity Z-projection of ~20 planes at 0.45 μm step-size. Images were generated with a Keyence BZ-X800E fluorescence microscope. White scale bars in each panel are 100 μm in length.