

Supplementary Online Content

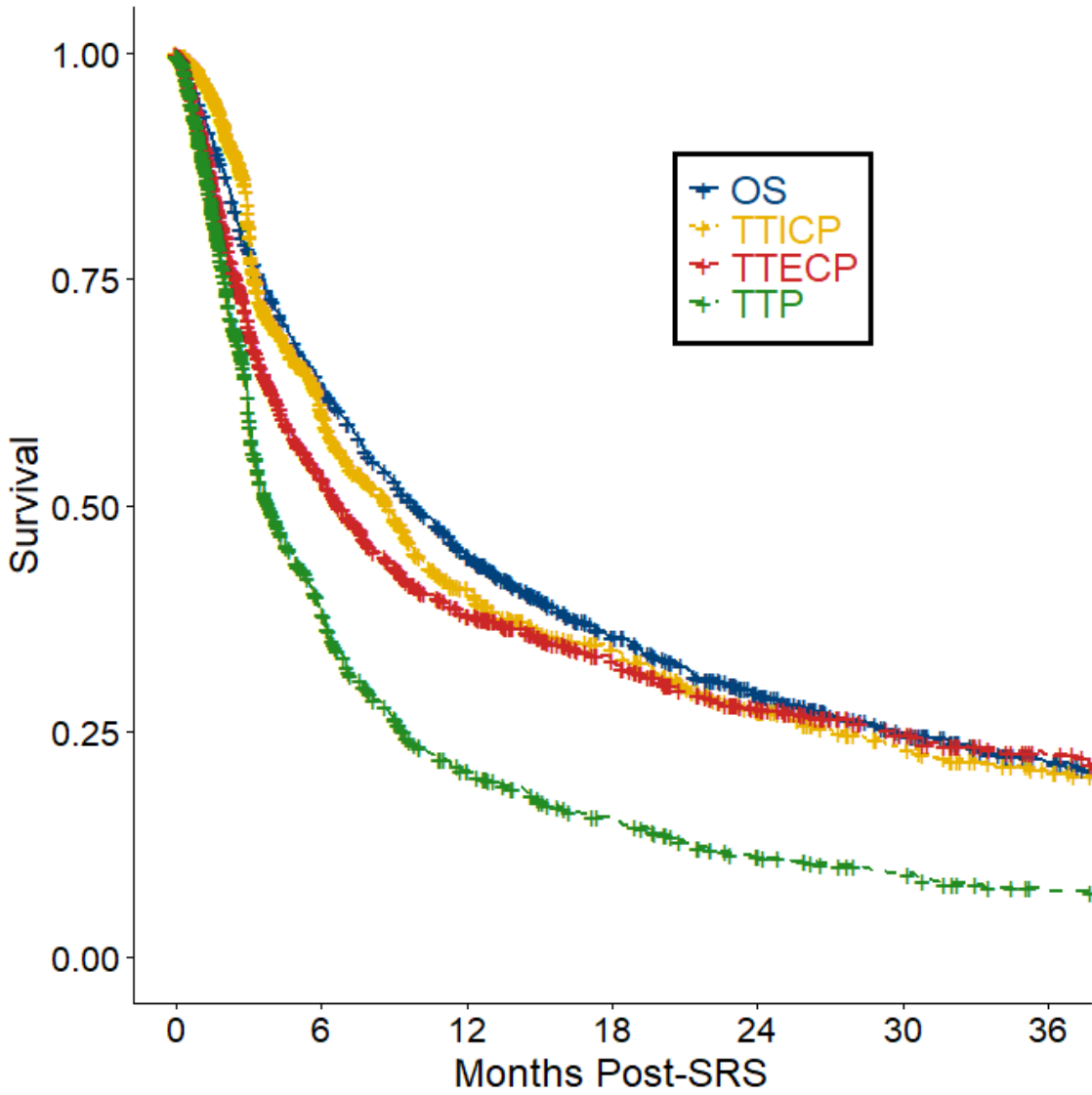
Carpenter DJ, Leng J, Arshad M, et al. Intracranial and extracranial progression and their correlation with overall survival after stereotactic radiosurgery in a multi-institutional cohort with brain metastases. *JAMA Netw Open*. 2023;6(4):e2310117. doi:10.1001/jamanetworkopen.2023.10117

eFigure. Correlation of Overall Survival (OS) to Time to Intracranial Progression (TTICP), Time to Extracranial Progression (TTECP), and Time to Any Progression (TTP)

eTable. Crude Event Rates for Death, Intracranial Progression (ICP), and Extracranial Progression (ECP) Across All Patients

This supplementary material has been provided by the authors to give readers additional information about their work.

eFigure. Correlation of Overall Survival (OS) to Time to Intracranial Progression (TTICP), Time to Extracranial Progression (TTECP), and Time to Any Progression (TTP)



	Number at risk						
	0	6	12	18	24	30	36
OS	1383	830	553	377	271	189	132
TTICP	1383	547	279	186	118	82	57
TTECP	1383	536	308	211	141	96	65
TTP	1383	396	183	119	73	52	33

eTable. Crude Event Rates for Death, Intracranial Progression (ICP), and Extracranial Progression (ECP) Across All Patients

		Death	
		Yes, No. (%)	No, No. (%)
ICP	Yes	492 (36%)	206 (15%)
	No	508 (37%)	177 (13%)
ECP	Yes	627 (45%)	173 (13%)
	No	373 (27%)	210 (15%)
<hr/>			
		ICP	
		Yes, No. (%)	No, No. (%)
ECP	Yes	482 (35%)	318 (23%)
	No	216 (16%)	367 (27%)