

## Supplemental information

### Development of serological assays to identify

#### *Helicobacter suis* and *H. pylori* infections

Hidenori Matsui, Emiko Rimbara, Masato Suzuki, Kengo Tokunaga, Hidekazu Suzuki, Masaya Sano, Takashi Ueda, Hitoshi Tsugawa, Sohachi Nanjo, Akira Takeda, Makoto Sasaki, Shuichi Terao, Tsuyoshi Suda, Sae Aoki, Keigo Shibayama, Hiroyoshi Ota, and Katsuhiko Mabe

## Supplemental information

### Development of serological assays to identify *Helicobacter suis* and *Helicobacter pylori* infections

Hidenori Matsui,<sup>1,2,3,15\*</sup> Emiko Rimbara,<sup>1</sup> Masato Suzuki,<sup>4</sup> Kengo Tokunaga,<sup>5</sup> Hidekazu Suzuki,<sup>6</sup> Masaya Sano,<sup>6</sup> Takashi Ueda,<sup>6</sup> Hitoshi Tsugawa,<sup>7</sup> Sohachi Nanjo,<sup>8</sup> Akira Takeda,<sup>9</sup> Makoto Sasaki,<sup>10</sup> Shuichi Terao,<sup>11</sup> Tsuyoshi Suda,<sup>12</sup> Sae Aoki,<sup>1</sup> Keigo Shibayama,<sup>2</sup> Hiroyoshi Ota,<sup>13</sup> and Katsuhiko Mabe<sup>14\*</sup>

<sup>1</sup>Department of Bacteriology II, National Institute of Infectious Diseases, Tokyo 208-0011, Japan

<sup>2</sup>Department of Bacteriology, Nagoya University Graduate School of Medicine, Aichi 466-8550, Japan

<sup>3</sup>Omura Satoshi Memorial Institute, Kitasato University, Tokyo 108-8641, Japan

<sup>4</sup>Antimicrobial Research Center, National Institute of Infectious Diseases, Tokyo 189-0002, Japan

<sup>5</sup>Department of General Medicine, Kyorin University School of Medicine, Tokyo 208-0011, Japan

<sup>6</sup>Division of Gastroenterology and Hepatology, Department of Internal Medicine, Tokai University School of Medicine, Kanagawa 259-1193, Japan

<sup>7</sup>Division of Host Defense Mechanism, Tokai University School of Medicine, Kanagawa 259-1193, Japan

<sup>8</sup>Third Department of Internal Medicine, Toyama University Hospital, Toyama 930-0194, Japan

<sup>9</sup>Takeda Hospital, Fukuoka 822-0027, Japan

<sup>10</sup>Division of Gastroenterology, Department of Internal Medicine, Aichi Medical University School of Medicine, Aichi 480-1103, Japan

<sup>11</sup>Department of Gastroenterology, Kakogawa Central City Hospital, Hyogo 675-8611, Japan

<sup>12</sup>Department of Gastroenterology, Kanazawa Municipal Hospital, Ishikawa 921-8105, Japan

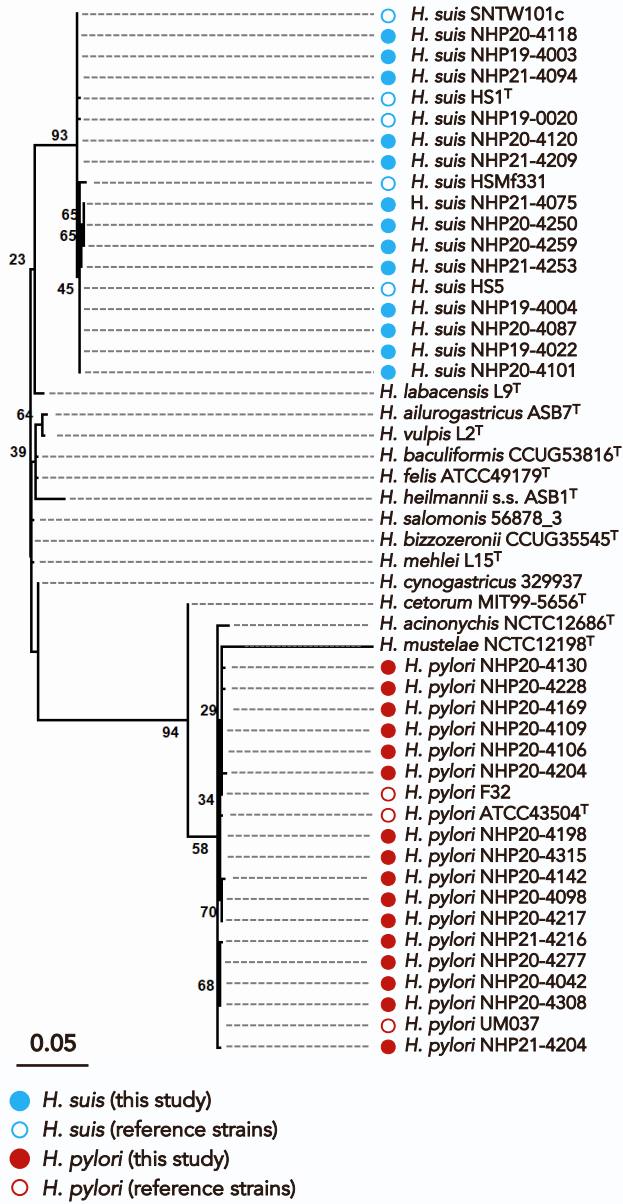
<sup>13</sup>Department of Biomedical Laboratory Sciences, Shinshu University School of Medicine, Nagano 390-8621, Japan

<sup>14</sup>Junpukai Health Maintenance Center Kurashiki, Okayama 712-8014, Japan

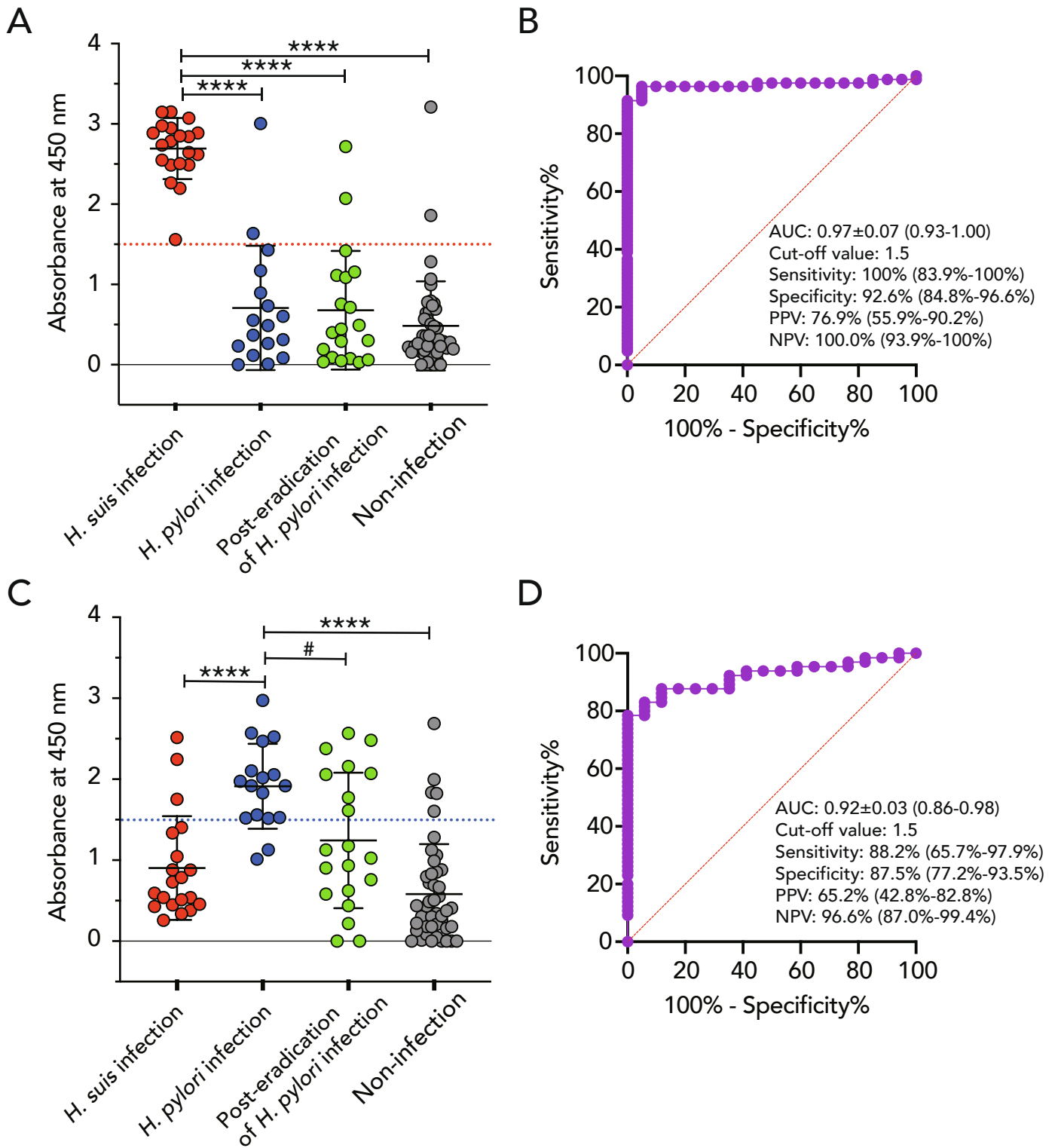
<sup>15</sup>Lead contact

H. M. and E. R. contributed equally to this work.

\*Corresponding authors at: Department of Bacteriology II, National Institute of Infectious Diseases, Gakuen 4-7-1, Musashimurayama-shi, Tokyo 208-0011, Japan and Junpukai Health Maintenance Center Kurashiki, Tsurushima 3-1-19, Kurashiki-shi, Okayama 712-8014, Japan. E-mail addresses: hmatsui@niid.go.jp (to H. M.) and katsuhiko-mabe@junpukai.or.jp (to K. M.).



**Figure S1. Phylogenetic analysis of *Helicobacter* strains.**  
Related to Table 1.



**Figure S2. ELISA for identification of *H. suis* and *H. pylori* infection using 1800-fold diluted sera.**

Related to Figure 1.

**Table S2. Reference strains of gastric *Helicobacter* species.**

Related to STAR Methods.

Species	Strain	Accession number
<i>H. acinonychis</i>	NCTC12686 <sup>T</sup>	UGIA00000000
<i>H. ailurogastricus</i>	ASB7 <sup>T</sup>	CDMG01000000
<i>H. baculiformis</i>	CCUG53816 <sup>T</sup>	FZMF00000000
<i>H. bizzozeronii</i>	CCUG35545 <sup>T</sup>	CAGP00000000
<i>H. cetorum</i>	MIT99-5656 <sup>T</sup>	ASM25927v1
<i>H. cynogastricus</i>	329937	FZMQ00000000
<i>H. felis</i>	ATCC49179 <sup>T</sup>	ASM20059v1
<i>H. heilmannii</i> s.s.	ASB1 <sup>T</sup>	ASM31920v1
<i>H. labacensis</i>	L9 <sup>T</sup>	QXQ000000000
<i>H. mehlei</i>	L15 <sup>T</sup>	VKGC00000000
<i>H. mustelae</i>	NCTC12198 <sup>T</sup>	NC_013949
<i>H. pylori</i>	ATCC43504 <sup>T</sup>	AP017632
<i>H. pylori</i>	F32	NC_017366
<i>H. pylori</i>	UM037	NC_021217
<i>H. salomonis</i>	56878_3	FZLZ00000000
<i>H. suis</i>	HS1 <sup>T</sup>	ADGY00000000
<i>H. suis</i>	HS5	ADHO00000000
<i>H. suis</i>	HSMf331	CABIKG00000000
<i>H. suis</i>	NHP19-0020	ASM1337415v1
<i>H. suis</i>	SNTW101c	ASM703620v1
<i>H. vulpis</i>	L2 <sup>T</sup>	QXQT00000000