

Figure S13

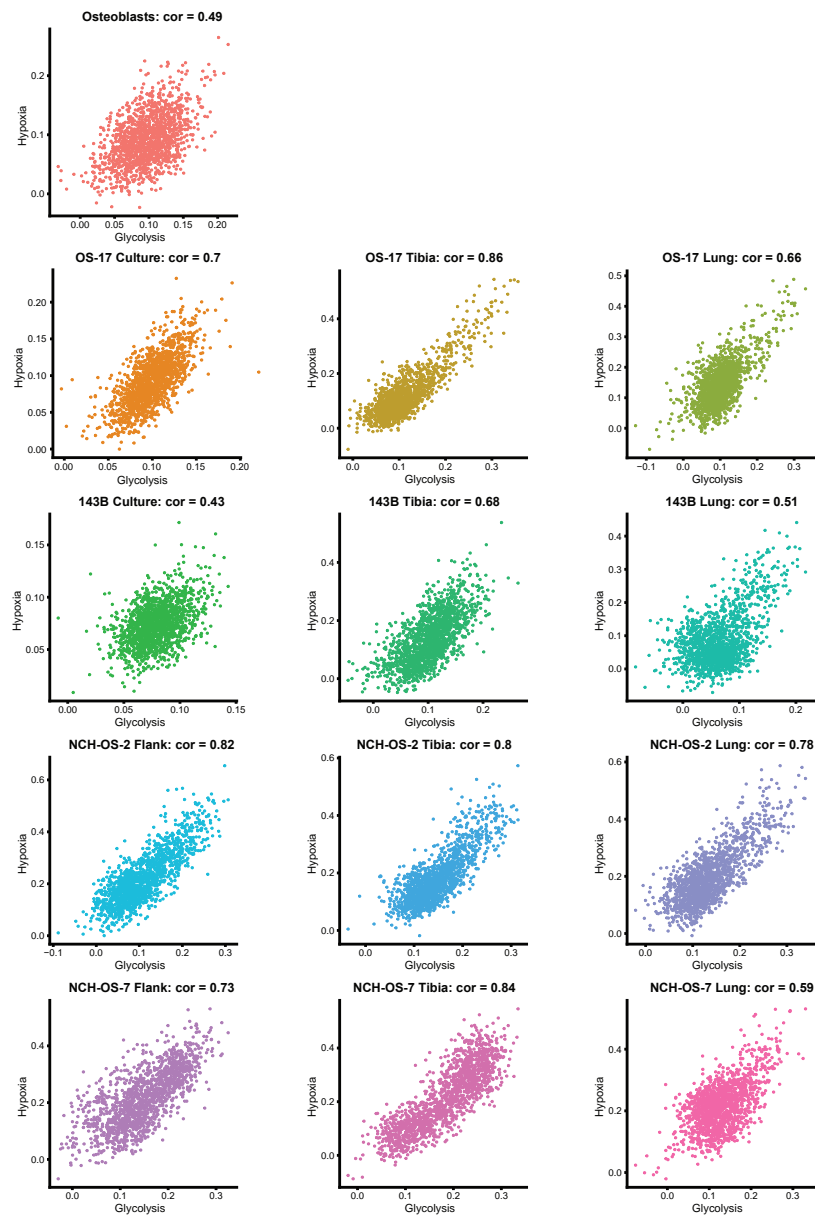


Figure S13. Correlation analysis for multiple cell line and PDX tumor datasets reveals strong positive correlation between glycolysis and hypoxia module scores. Scatter plots using the 'FeatureScatter' function in Seurat for glycolysis and hypoxia module scores in each of the datasets. Seurat-calculated correlation coefficient for each analysis is shown in the title above each plot.

Figure S14

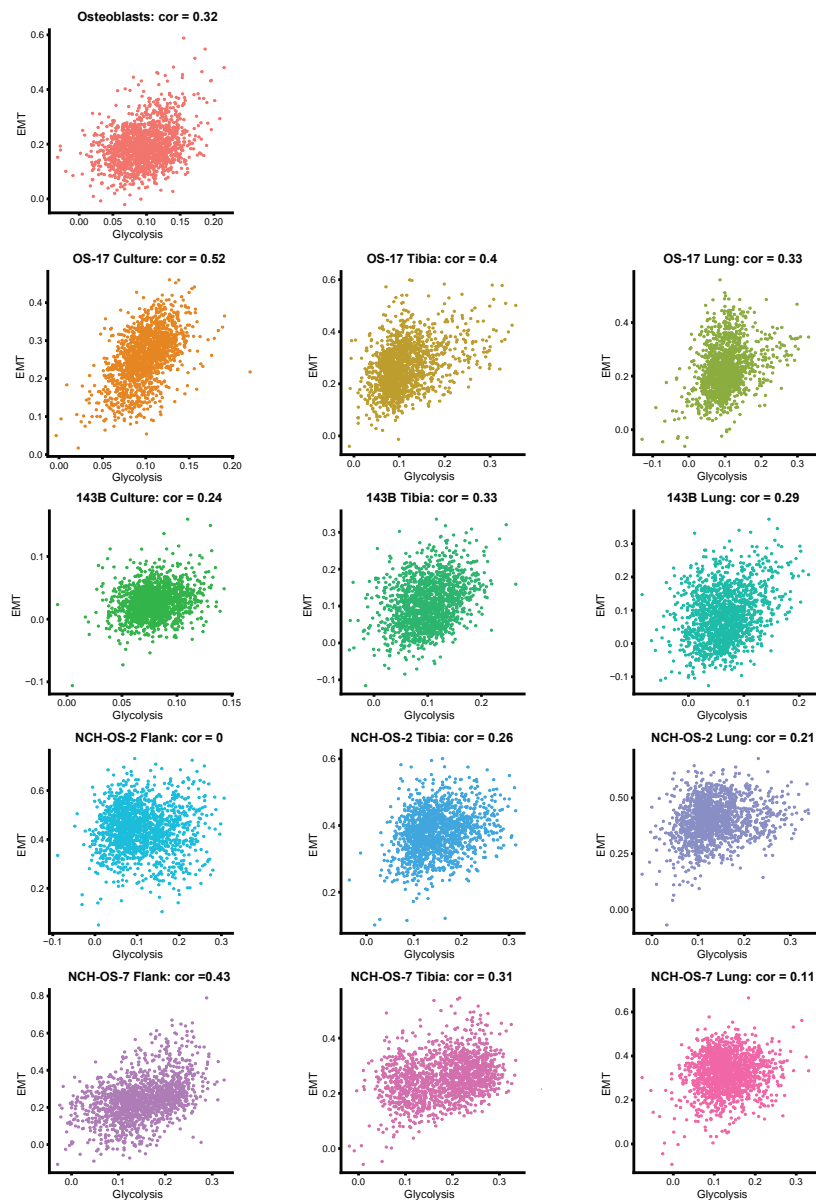


Figure S14. Correlation analysis for multiple cell line and PDX tumor datasets reveals minimal correlation between glycolysis and EMT module scores. Scatter plots using the 'FeatureScatter' function in Seurat for glycolysis and EMT module scores in each of the datasets. Seurat-calculated correlation coefficient for each analysis is shown in the title above each plot.

Figure S15

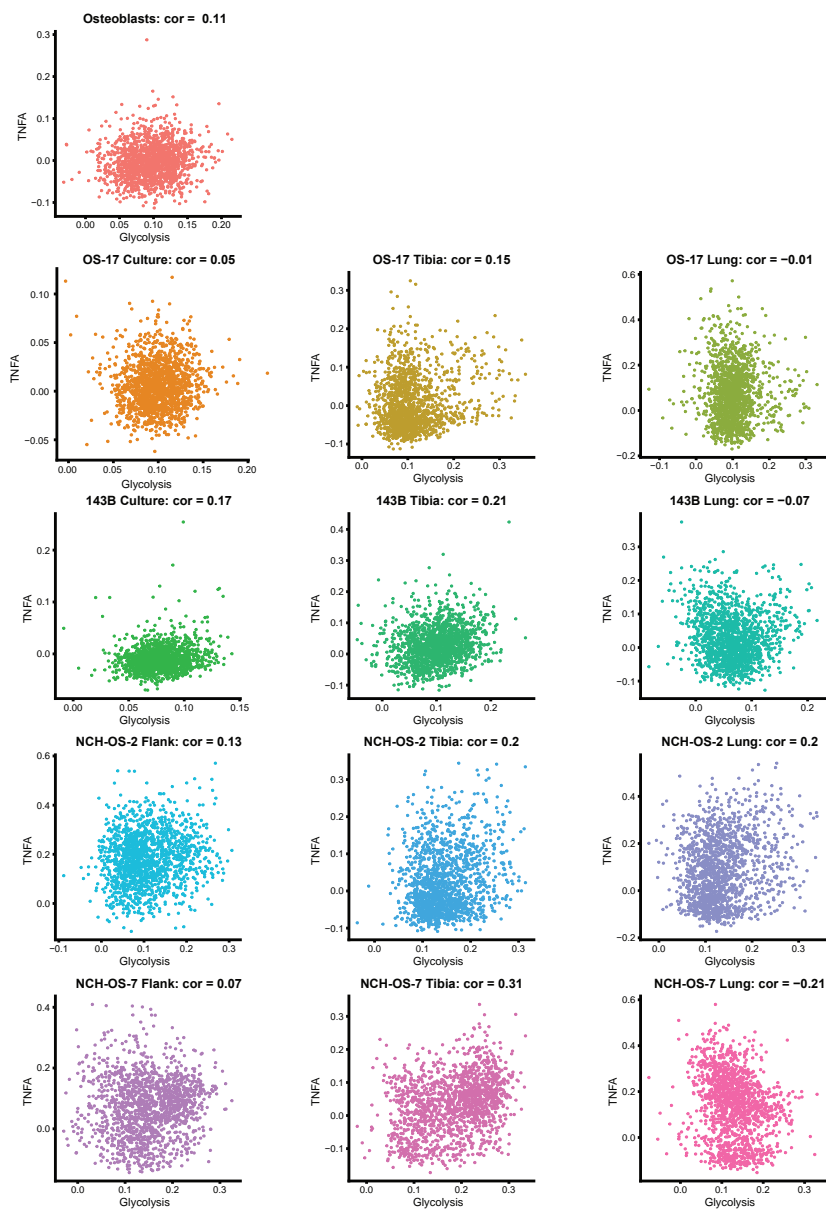


Figure S15. Correlation analysis for multiple cell line and PDX tumor datasets reveals minimal correlation between glycolysis and 'TNF α signaling via NF κ B' module scores. Scatter plots using the 'FeatureScatter' function in Seurat for glycolysis and TNF α signaling via NF κ B module scores in each of the datasets. Seurat-calculated correlation coefficient for each analysis is shown in the title above each plot.

Figure S16

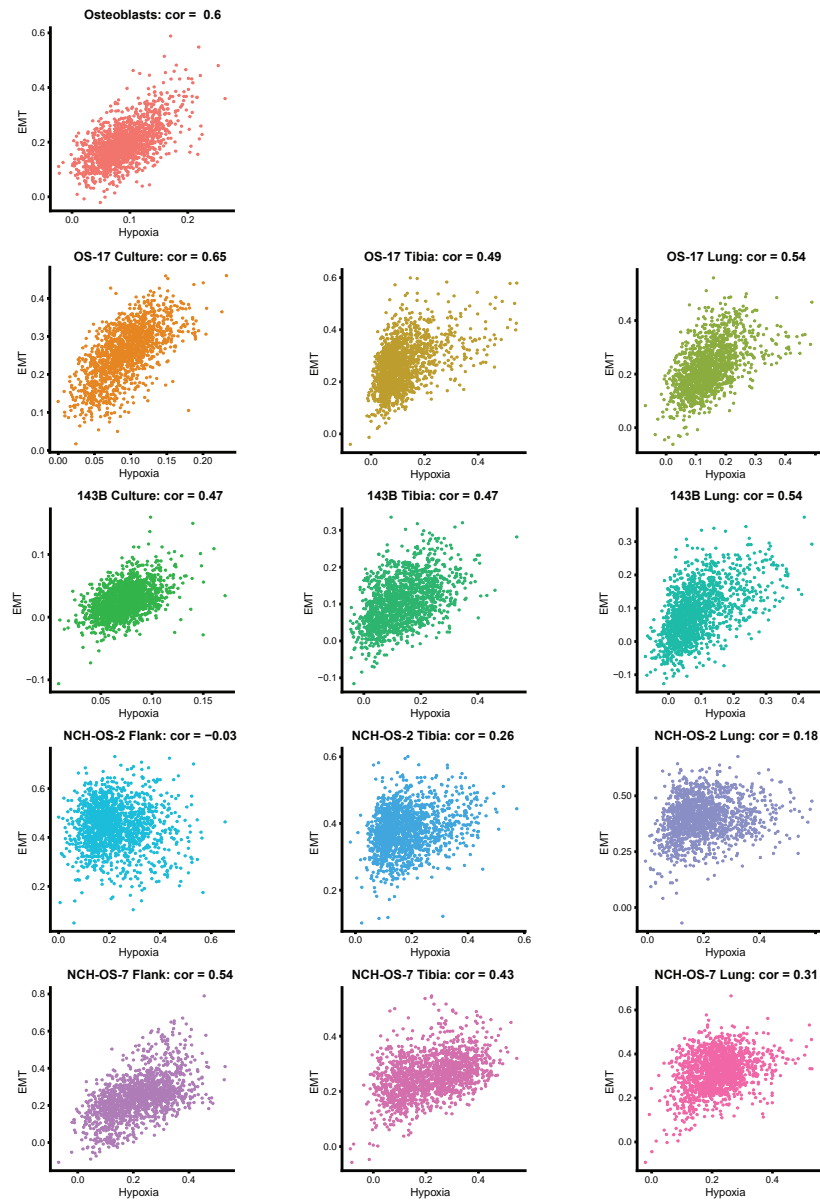


Figure S16. Correlation analysis for multiple cell line and PDX tumor datasets reveals mixed correlation between hypoxia and EMT module scores. Scatter plots using the 'FeatureScatter' function in Seurat for hypoxia and EMT module scores in each of the datasets. Seurat-calculated correlation coefficient for each analysis is shown in the title above each plot.

Figure S17

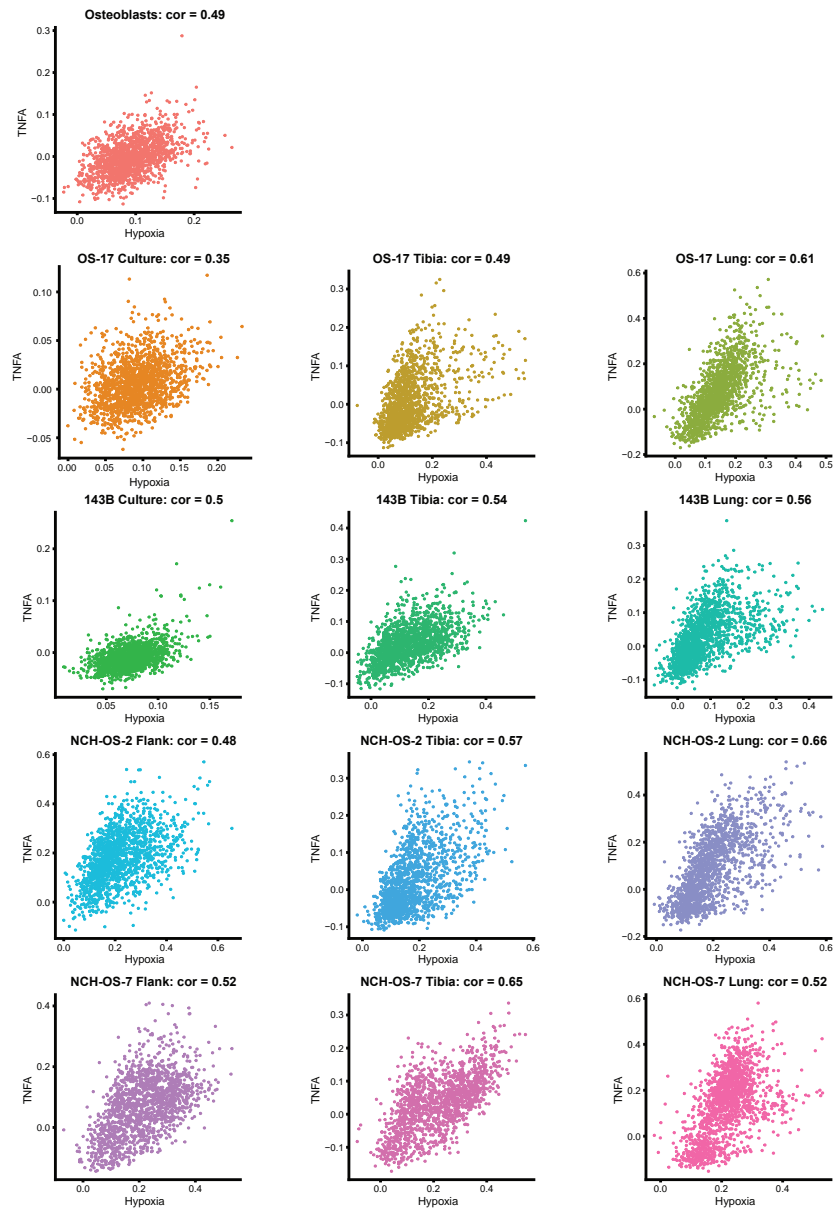


Figure S17. Correlation analysis for multiple cell line and PDX tumor datasets reveals strong correlation between hypoxia and 'TNF α signaling via NF κ B' module scores. Scatter plots using the 'FeatureScatter' function in Seurat for hypoxia and TNF α signaling via NF κ B module scores in each of the datasets. Seurat-calculated correlation coefficient for each analysis is shown in the title above each plot.

Figure S18

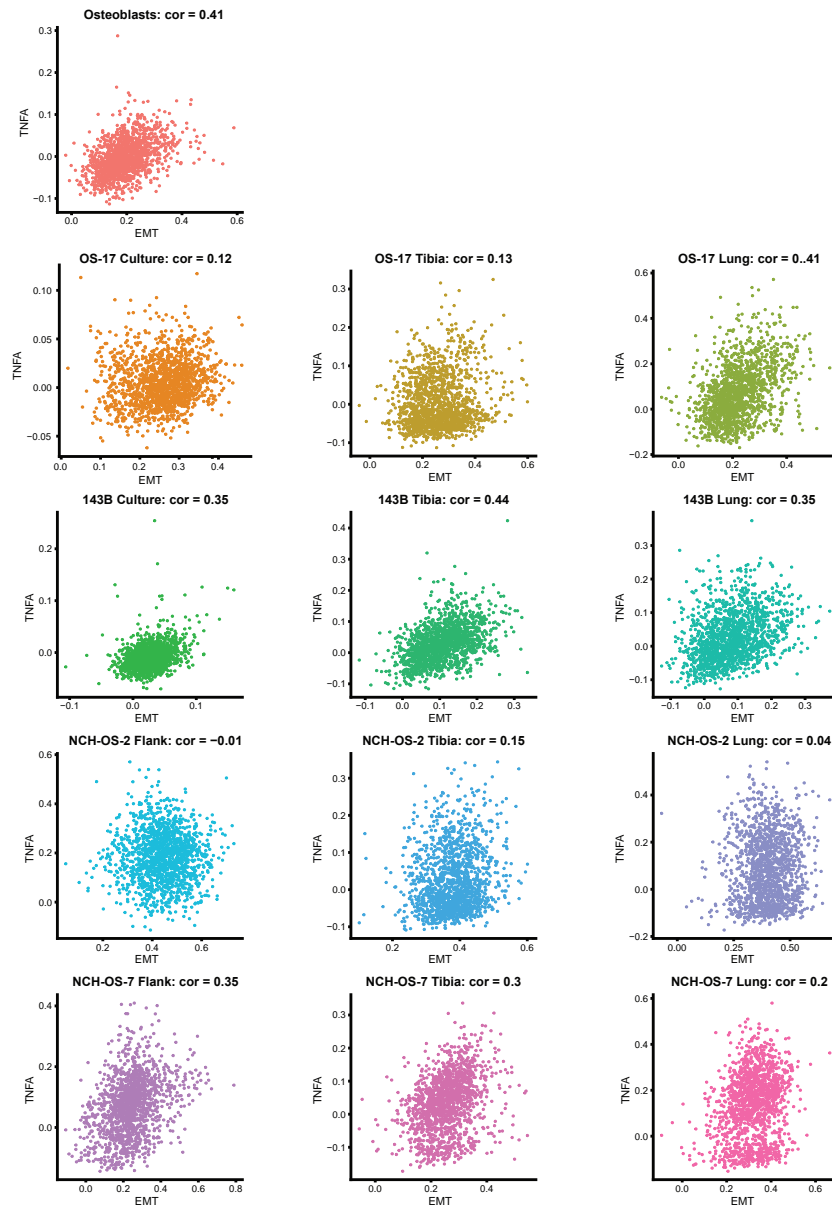


Figure S18. Correlation analysis for multiple cell line and PDX tumor datasets reveals moderate correlation between EMT and 'TNF α signaling via NF κ B' module scores. Scatter plots using the 'FeatureScatter' function in Seurat for EMT and TNF α signaling via NF κ B module scores in each of the datasets. Seurat-calculated correlation coefficient for each analysis is shown in the title above each plot.