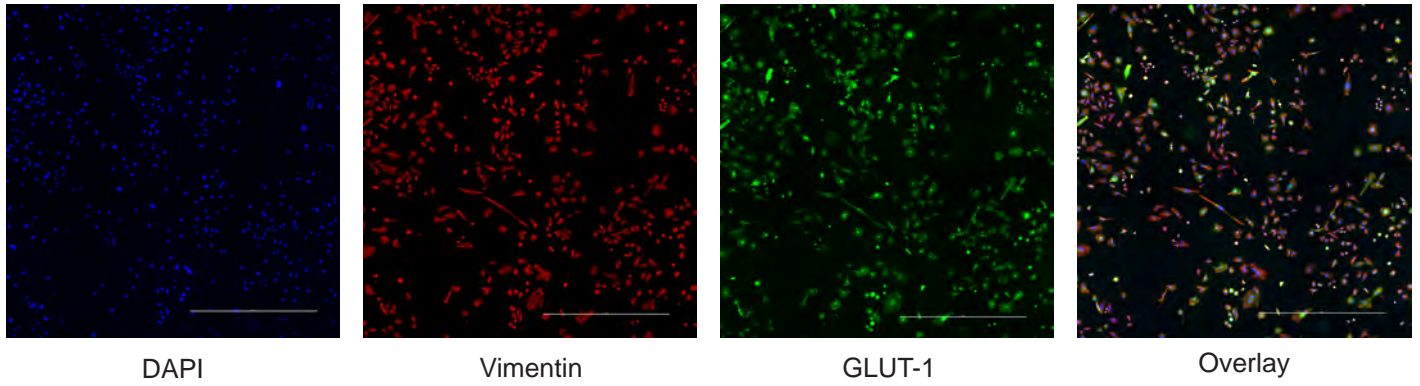
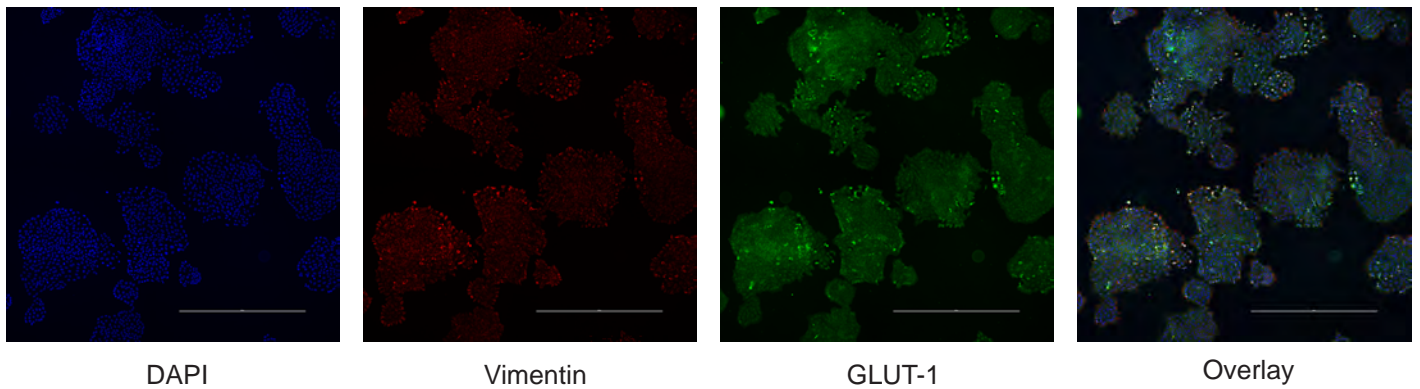


Figure S31

**A** OS-17



**B** 143B



**Figure S31. Tumor cell cultures demonstrate heterogeneity in GLUT1 staining.** A, B) Immunofluorescence staining of OS-17 and 143B cell culture, respectively, for GLUT1 (green; a marker of glycolysis) and vimentin (red; marker to identify osteosarcoma cells) with scale bars of 1000 micrometers. Both cell culture models displayed strong to light expression of GLUT1.