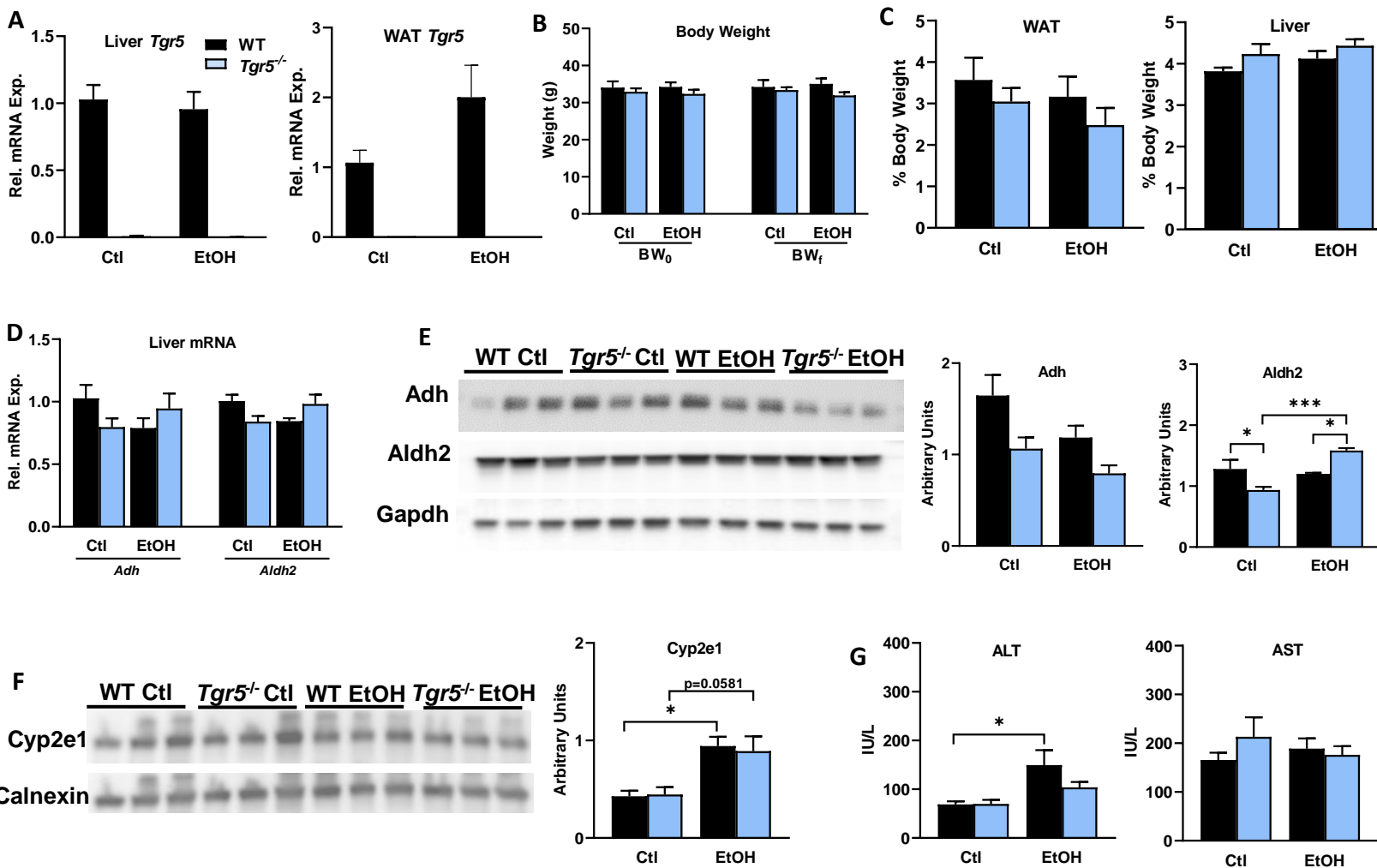
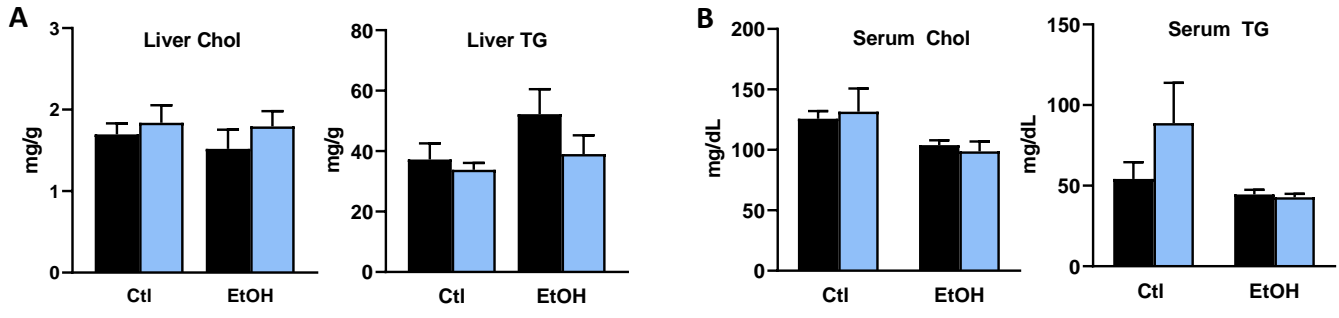


# Supplemental Fig. 1



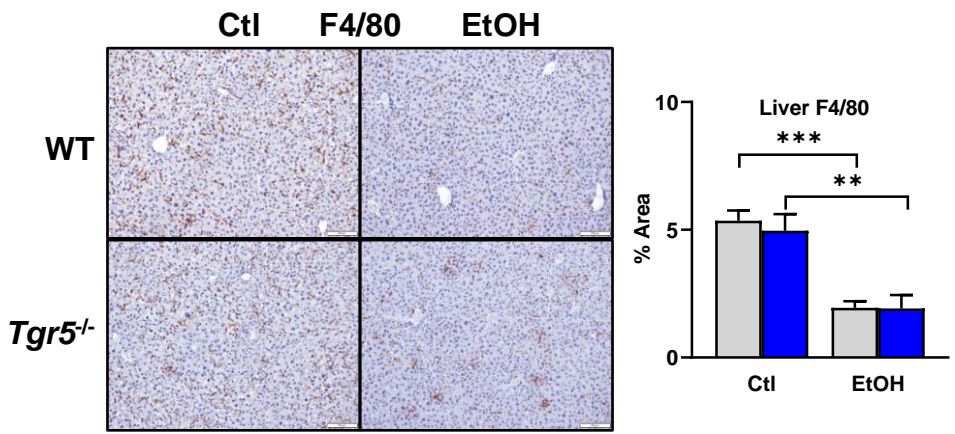
**Supplemental Figure 1. Effects of chronic + binge ethanol in male *Tgr5*<sup>-/-</sup> mice.** A. Liver and white adipose tissue (WAT) mRNA expression of *Tgr5*. B. Body weight before (BW<sub>0</sub>) and after (BW<sub>f</sub>) administering the NIAAA chronic + binge ethanol model. C. WAT and liver weight. D. Hepatic expression of *Cyp2e1* protein. F. Hepatic expression of genes involved in alcohol metabolism. G. Serum alanine aminotransferase (ALT) and aspartate aminotransferase (AST). Ctl: control diet + maltose binge; EtOH: ethanol diet + ethanol binge. \* p<0.05, \*\*p<0.01, \*\*\*p<0.001. n=6-7.

# Supplemental Fig. 2



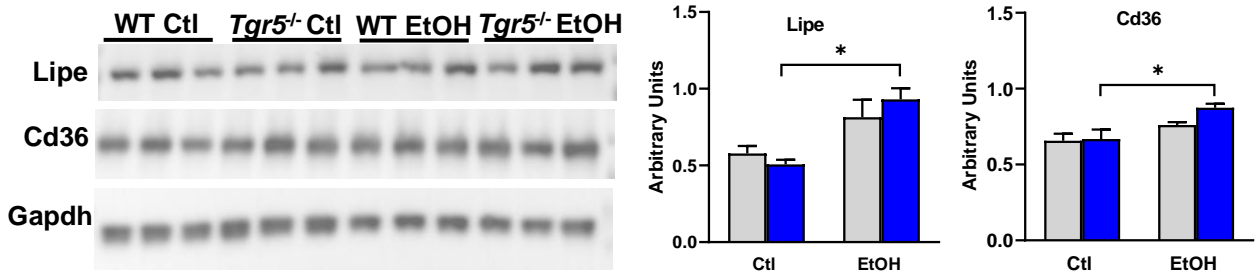
**Supplemental Figure 2. Hepatic and serum lipid metabolism in male *Tgr5*<sup>-/-</sup> mice.** A. Hepatic cholesterol (Chol) and triglyceride (TG) content. B. Serum chol and TG. Ctl: control diet + maltose binge; EtOH: ethanol diet + ethanol binge. \* p<0.05, \*\*p<0.01, \*\*\*p<0.001. n=6-7.

# Supplemental Fig. 3



Supplemental Figure 3. Hepatic F4/80 staining in female *Tgr5*<sup>-/-</sup> mice. Ctl: control diet + maltose binge; EtOH: ethanol diet + ethanol binge. \* p<0.05, \*\*p<0.01, \*\*\*p<0.001. Representative images shown; quantified in n=6-7.

# Supplemental Fig. 4



**Supplemental Figure 4. Protein expression in female white adipose tissue.** Ctl: control diet + maltose binge; EtOH: ethanol diet + ethanol binge. \* p<0.05, \*\*p<0.01, \*\*\*p<0.001. n=3.