

Figure S1. Representative images of (A and B) methylcellulose colony formation assays and (C) the number of colonies in triplicate experiments. **P<0.01. sh-, short hairpin; NC, negative control.

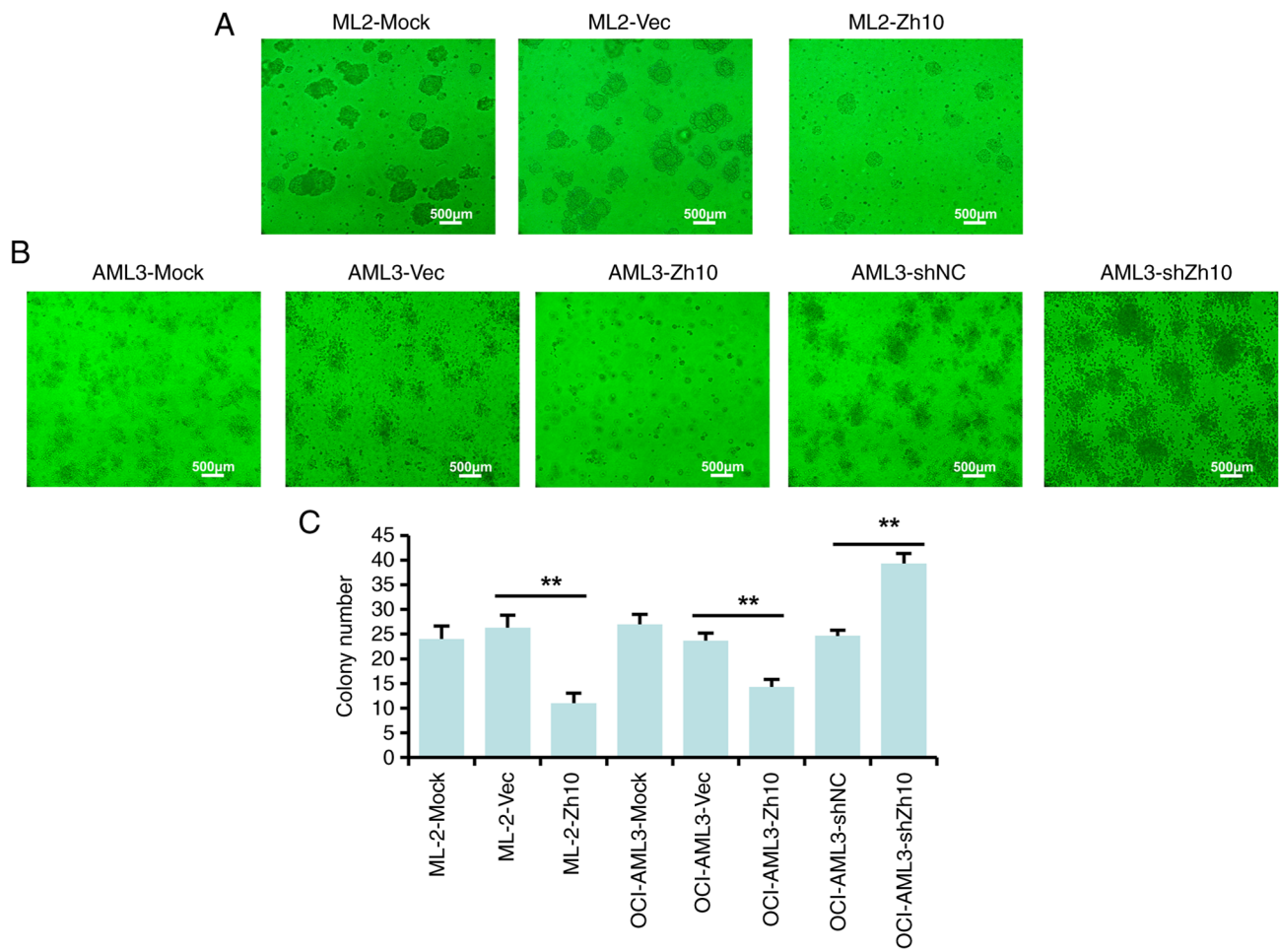


Figure S2. Representative images of flow cytometric analysis of cell cycle.

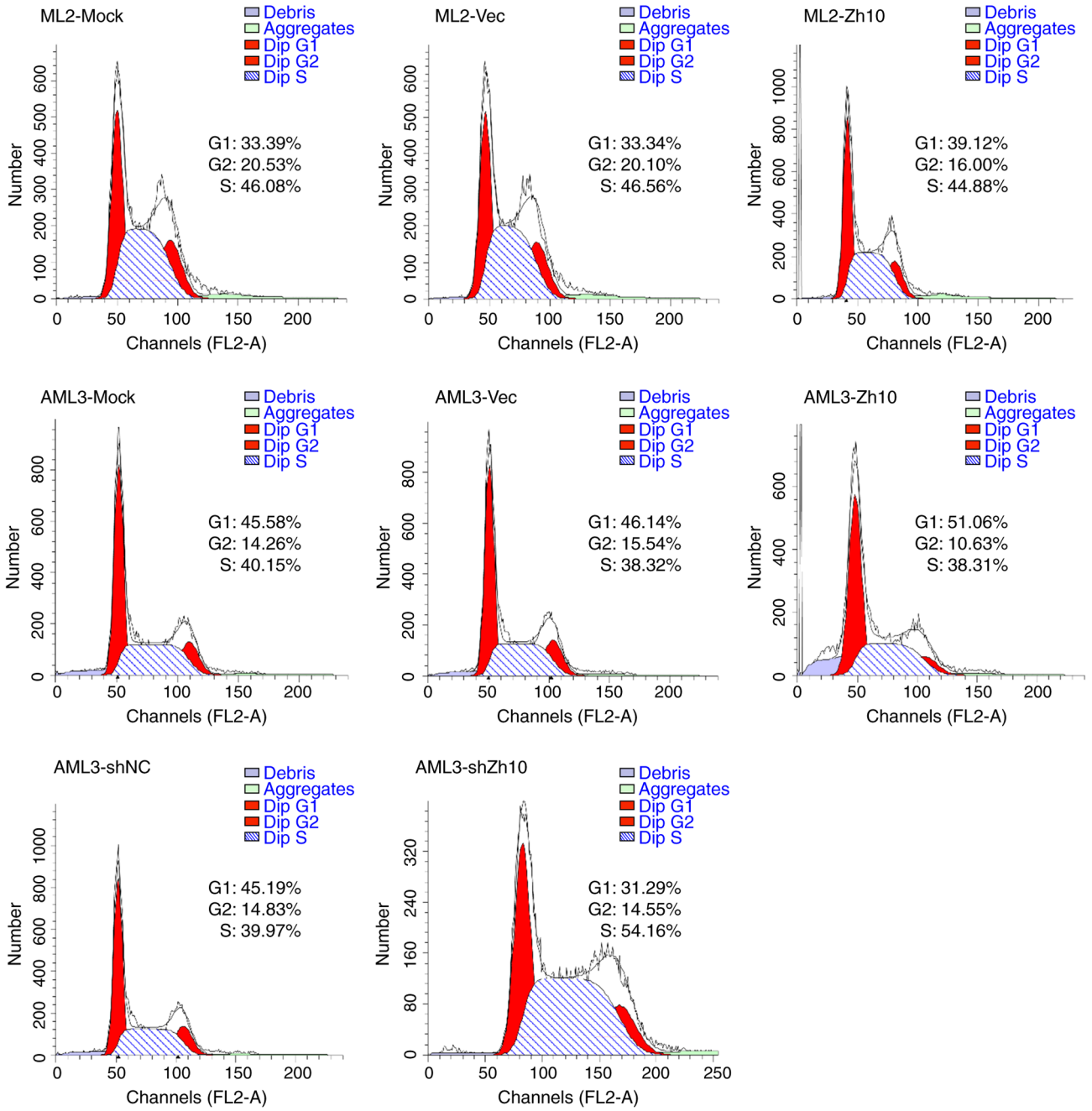


Figure S3. Representative images of flow cytometric analysis of apoptosis. sh-, short hairpin; NC, negative control.

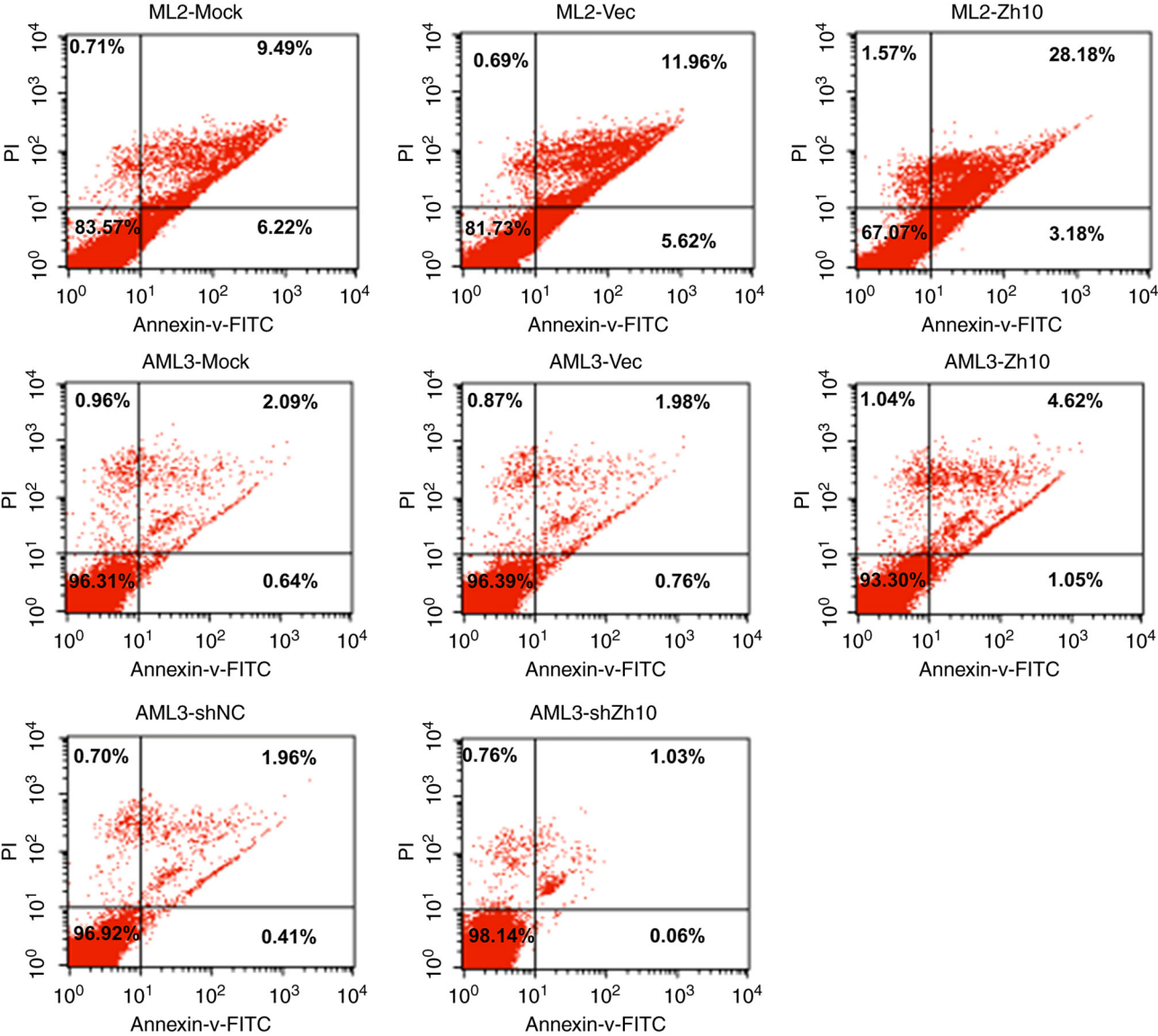


Figure S4. Representative images of flow cytometric analysis of human CD45-cell populations in (A) peripheral blood and (B) bone marrow. Peripheral blood and bone marrow from control mice without transplantation of human acute myeloid leukemia cells as a negative control (blank). PBMC, peripheral blood mononuclear cell; BMMC, bone marrow mononuclear cell.

