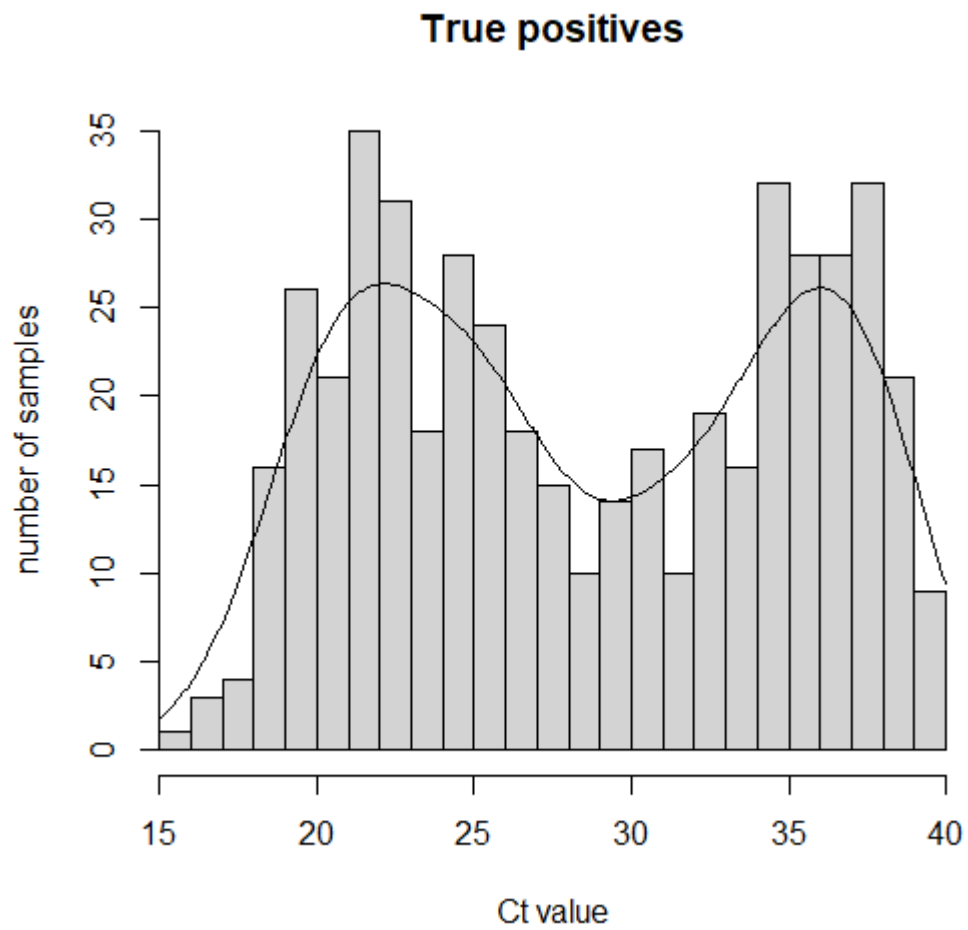


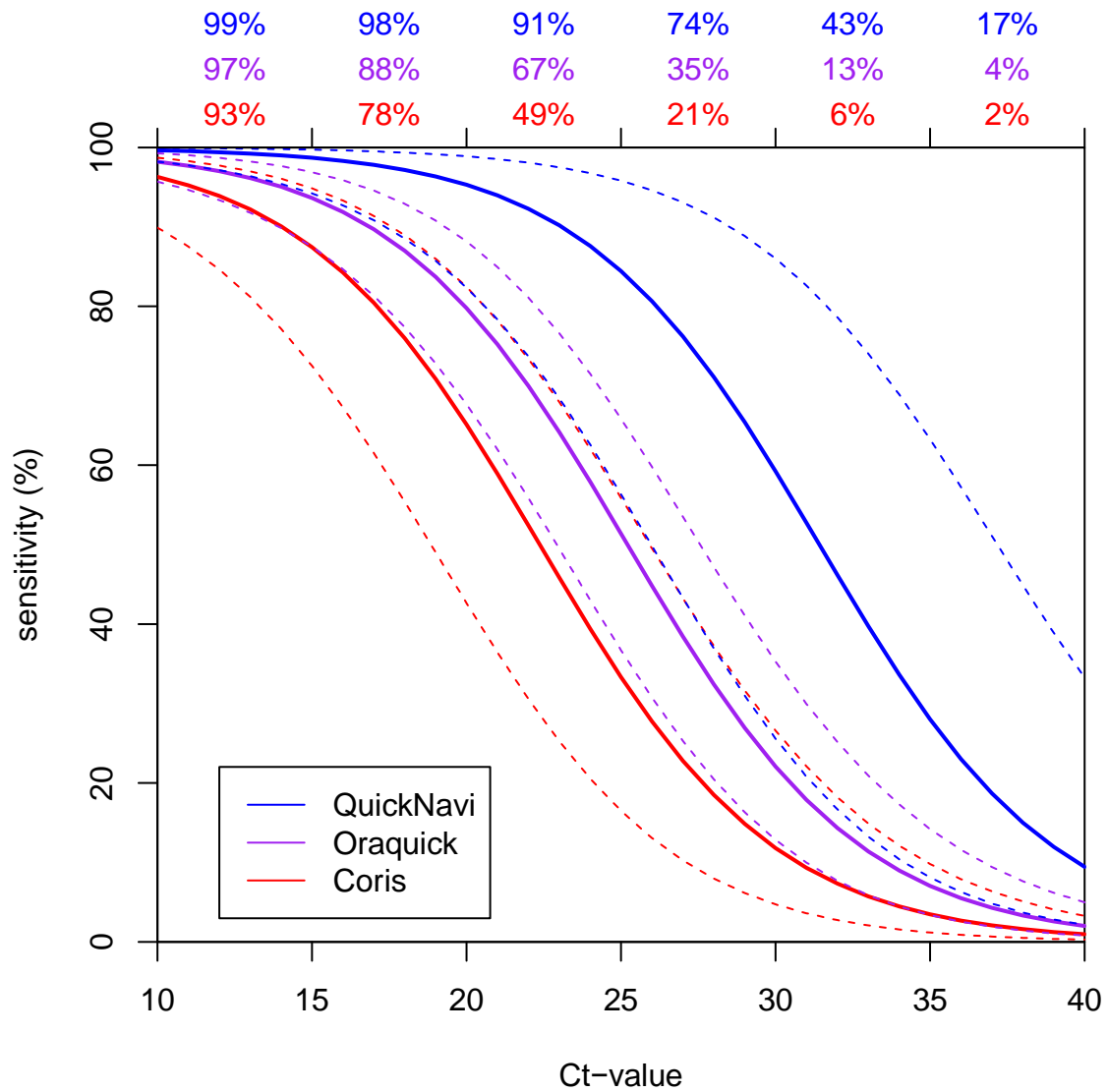
Supplemental Figure 1. Study procedures & data collection

This diagram describes the whole study workflow throughout samples selection in data sets, sorting in biorepositories, preparation, aliquoting, and testing process with GeneXpert® and different Ebola virus rapid diagnostic tests. It also describes RDTs results interpretation and decision-making.



Supplemental Figure 2. Distribution of NP Ct-values in EBOV positive samples

This diagram shows how NP Ct-values in all EBOV positive samples are distributed with with large number of samples clustered in the range of 19-26 and 34-39.



Supplemental Figure 3. Sensitivity of the rapid diagnostic tests as a function of GeneXpert cycle threshold value. Dashed lines indicate 95% CIs (*Mukadi et al, <https://pubmed.ncbi.nlm.nih.gov/35298901/>*). This graph shows the sensitivity of the three Ebola virus RDTs declining when the Ct-values are increasing in samples, but in variable proportions.