

IP: anti PA, WB anti-PA

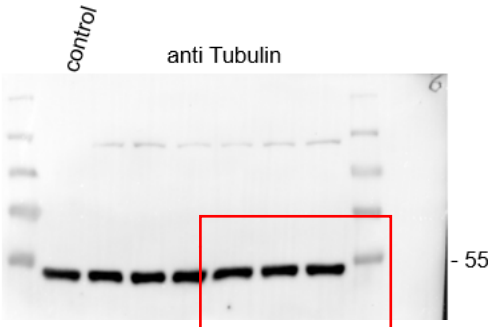
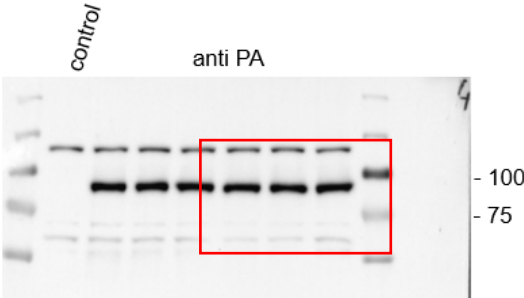
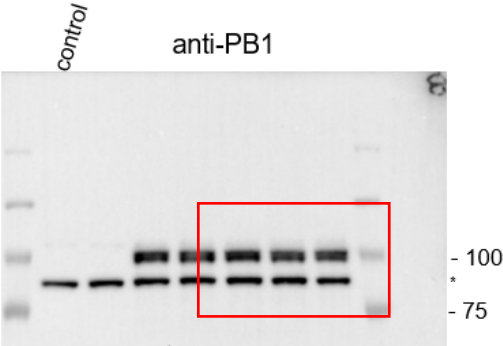
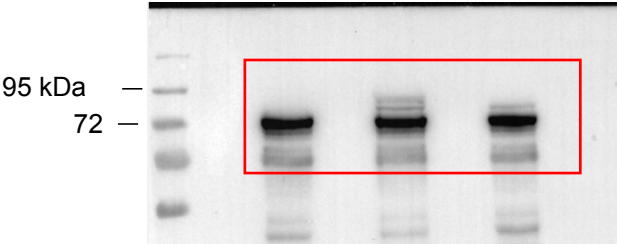


Fig. 2A

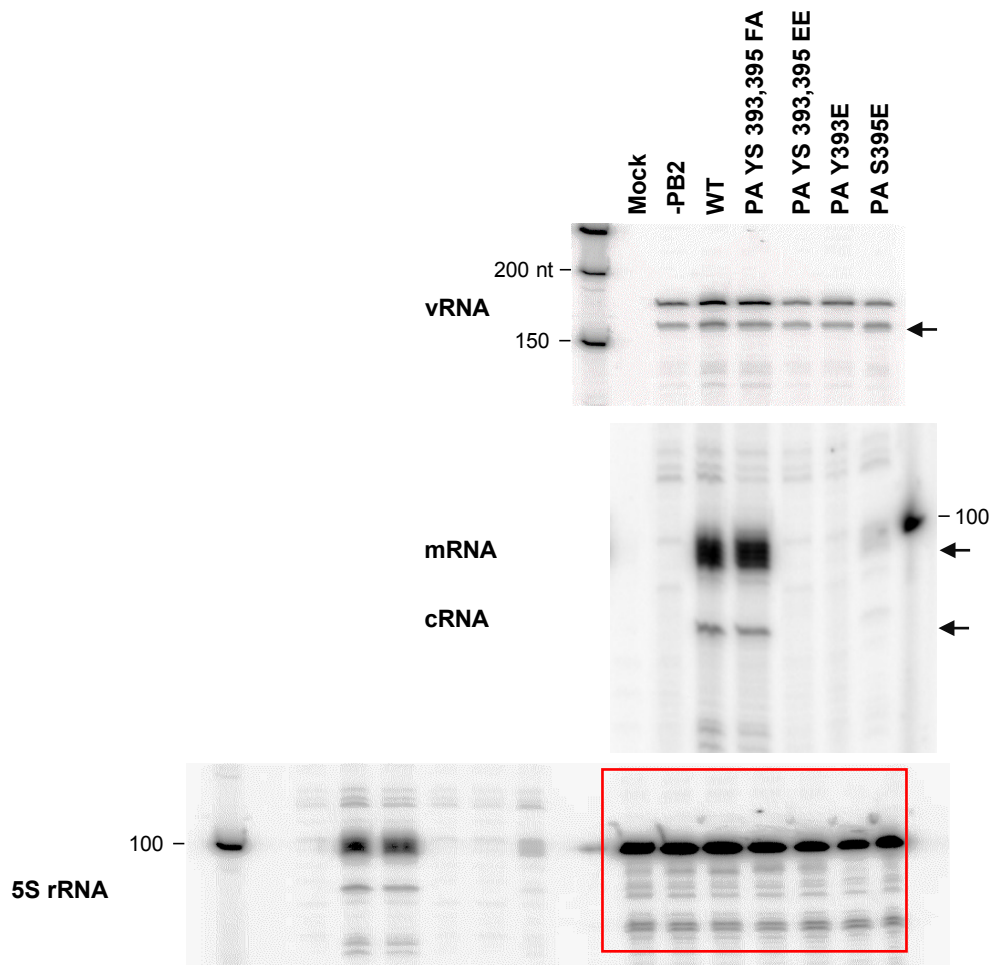
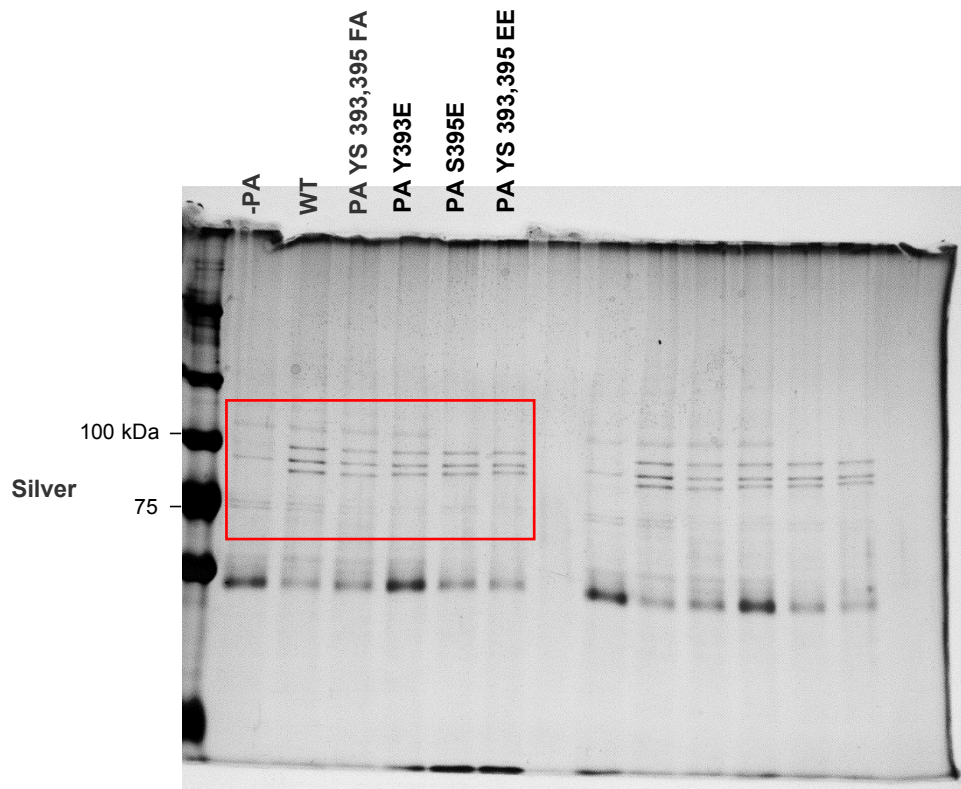


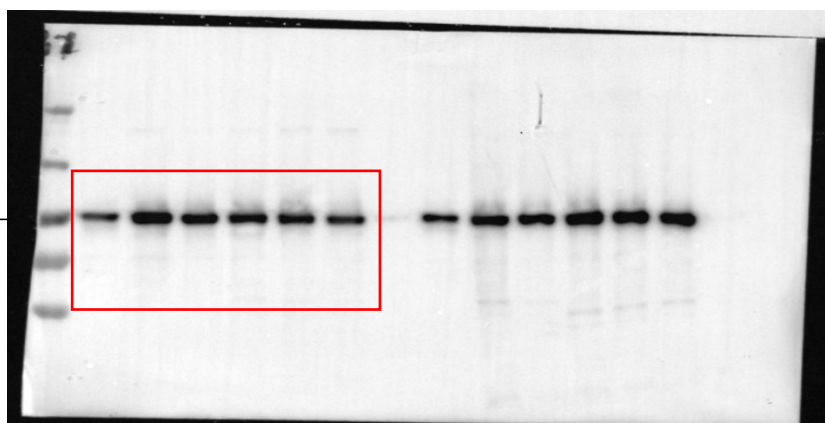
Fig. 3C



WB

anti-PB1

100



anti-PA

100 -
75 -

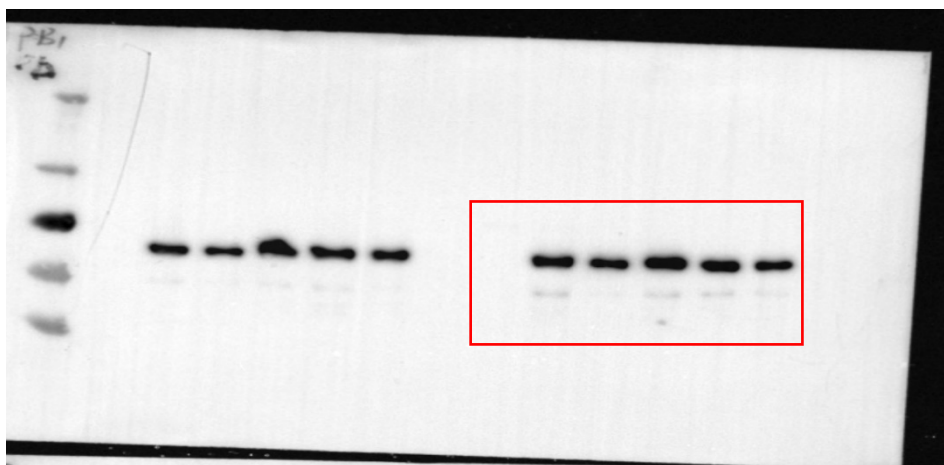
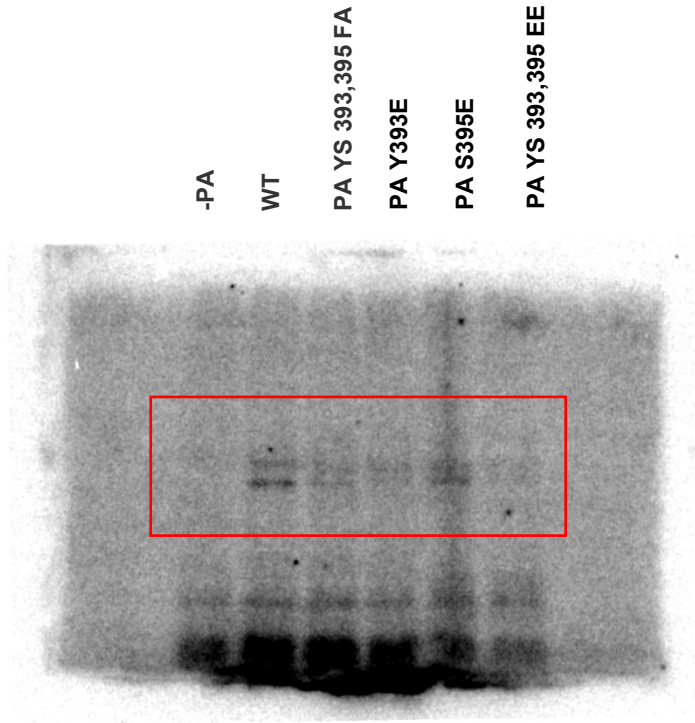


Fig. 4B

5' vRNA



5' cRNA

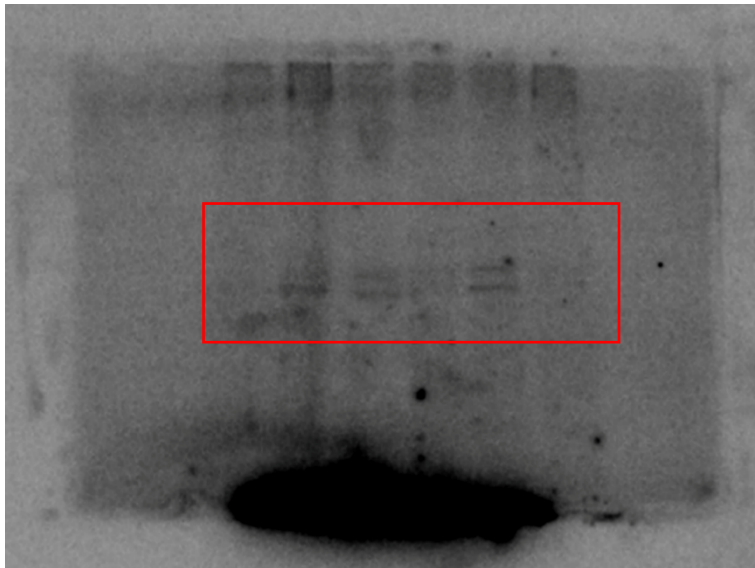
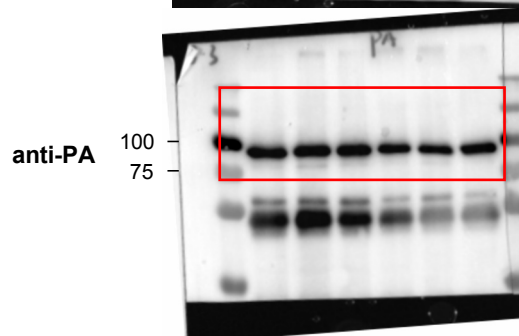
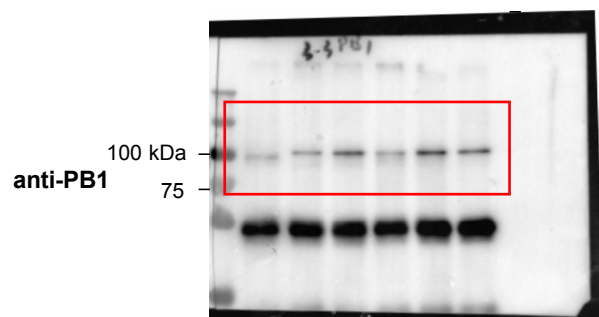
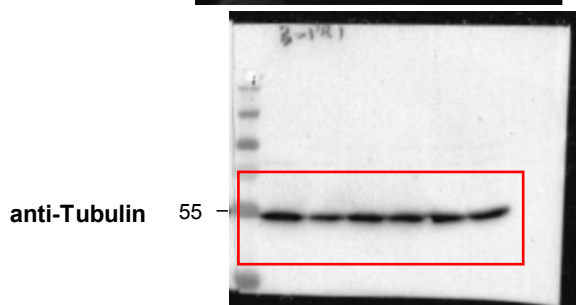
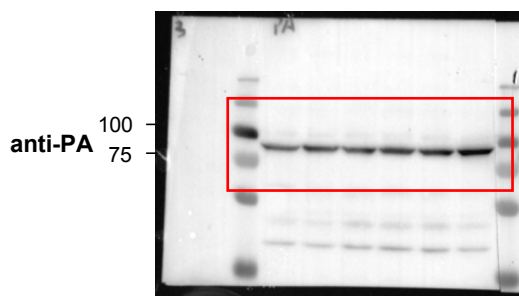
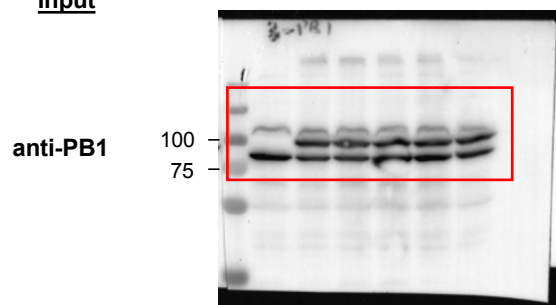


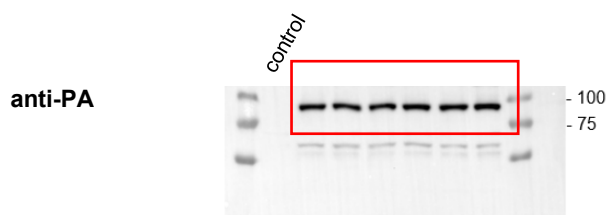
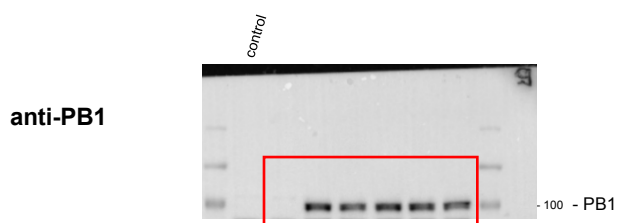
Fig. 4C

A

	IP: anti-PA					
PB2	+	+	+	+	+	+
PB1	+	+	+	+	+	+
PA WT	+	+				
PA YS 393,395 FA			+			
PA YS 393,395 EE				+		
PA Y393E					+	
PA S395E						+

Input**B**

	IP: anti-PA					
pHW72-Luci	+	+	+	+	+	+
PB2	+	+	+	+	+	+
PB1		+	+	+	+	+
NP	+	+	+	+	+	+
PA WT	+	+				
PA YS 393,395 FA			+			
PA YS 393,395 EE				+		
PA Y393E					+	
PA S395E						+

Input

PB2-TAP (SC35M)	+	+	+	+
PB1 (SC35M)		+		+
PA (SC35M)			+	+
PB2-TAP (WSN)				+
PB1 (WSN)				+
PA (WSN)				+

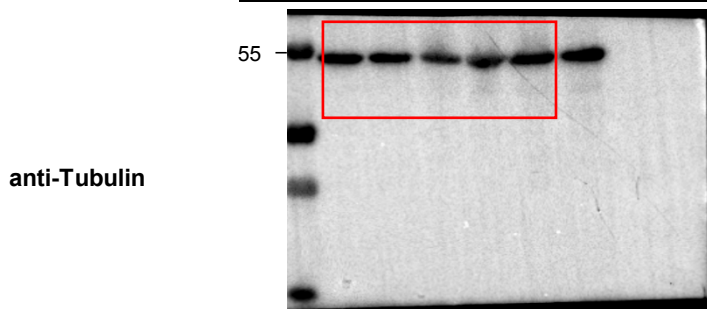
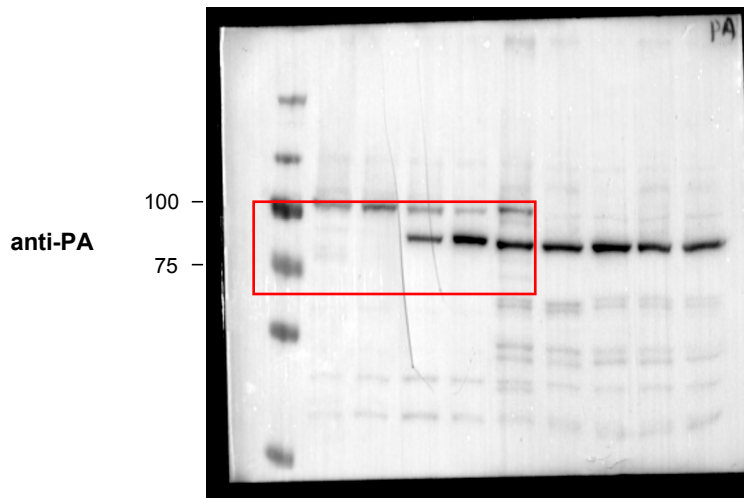
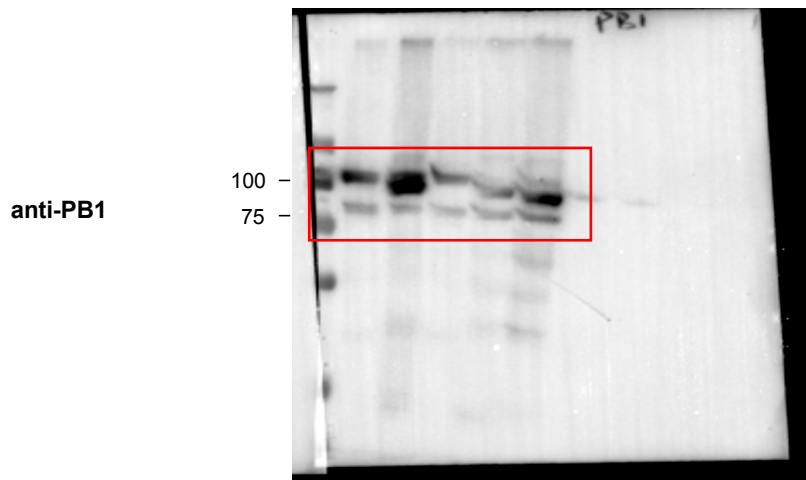
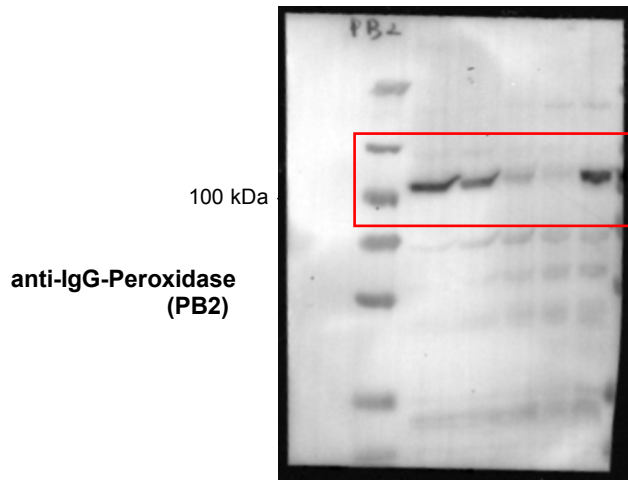


Fig. S4