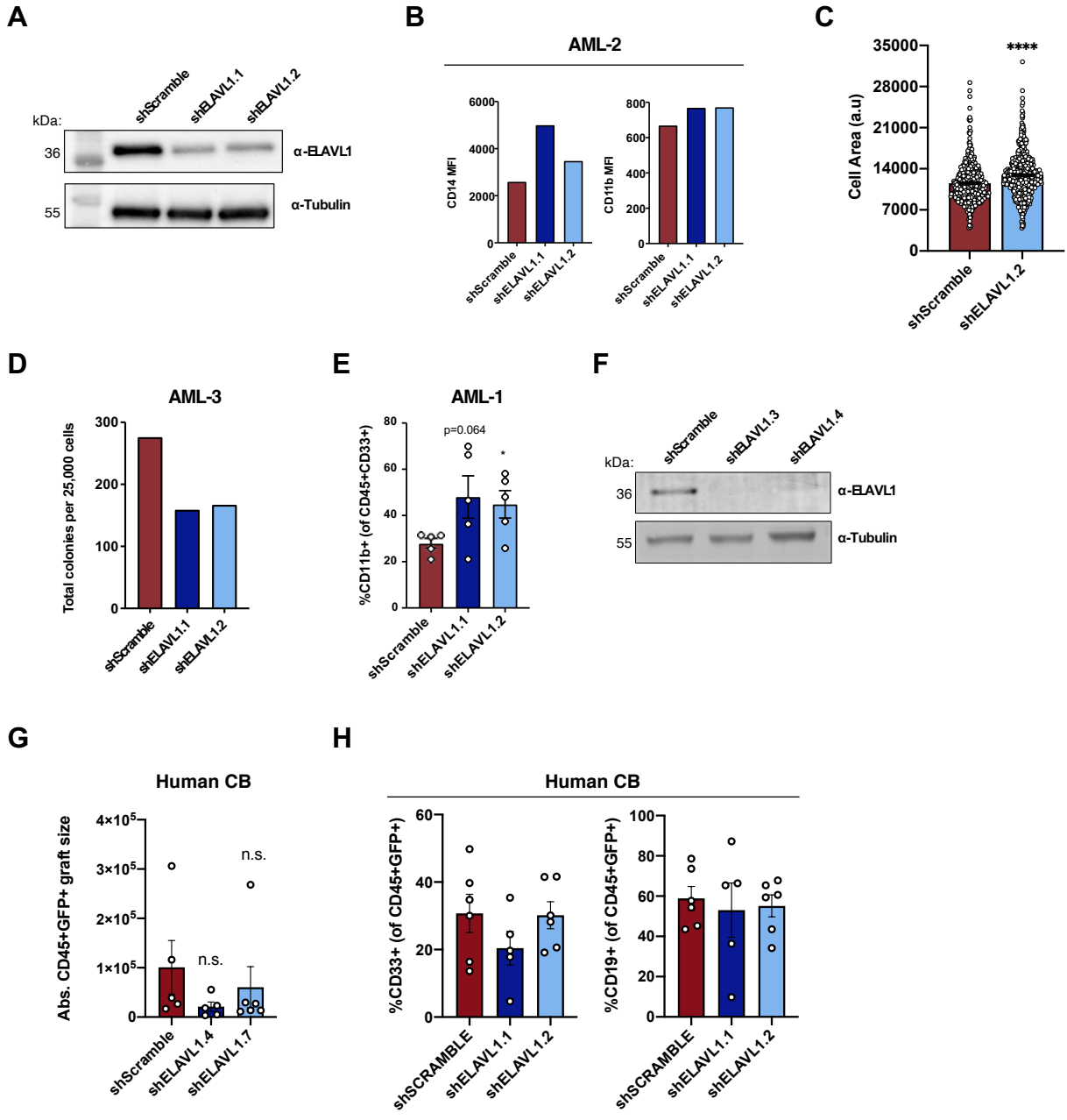


Supplemental Figure S4



Supplemental Figure S4. ELAVL1 knockdown promotes AML cell differentiation but maintains lineage output in healthy hematopoietic grafts. (A) Western blot validation of ELAVL1 knockdown by shELAVL1.1 and shELAVL1.2 in HeLa cells, normalized to α -tubulin. (B) Median fluorescence intensities (MFI) of CD14 and CD11b in primary AML cultures 10 days post-infection. (C) Quantification of cellular area of shScramble- and shELAVL1.2- infected primary AML cells from images of cytopsins. (D) CFU output from infected primary AML cells 16 days post- plating (n=1). (E) Flow cytometric analysis of CD11b⁺ populations in bone marrow at endpoints from shScramble- and shELAVL1.1- infected grafts. (F) Western blot validation of ELAVL1 knockdown by shElav1.3 and shElav1.4 in HEK293 cells, normalized to α -tubulin. (G) Absolute graft size (CD45⁺GFP⁺) in the bone marrow of recipient mice at endpoint. (H) Flow cytometric quantification of percentage of myeloid (CD33⁺) and lymphoid (CD19⁺) populations within bone marrow grafts of CB-transplanted mice at endpoint.