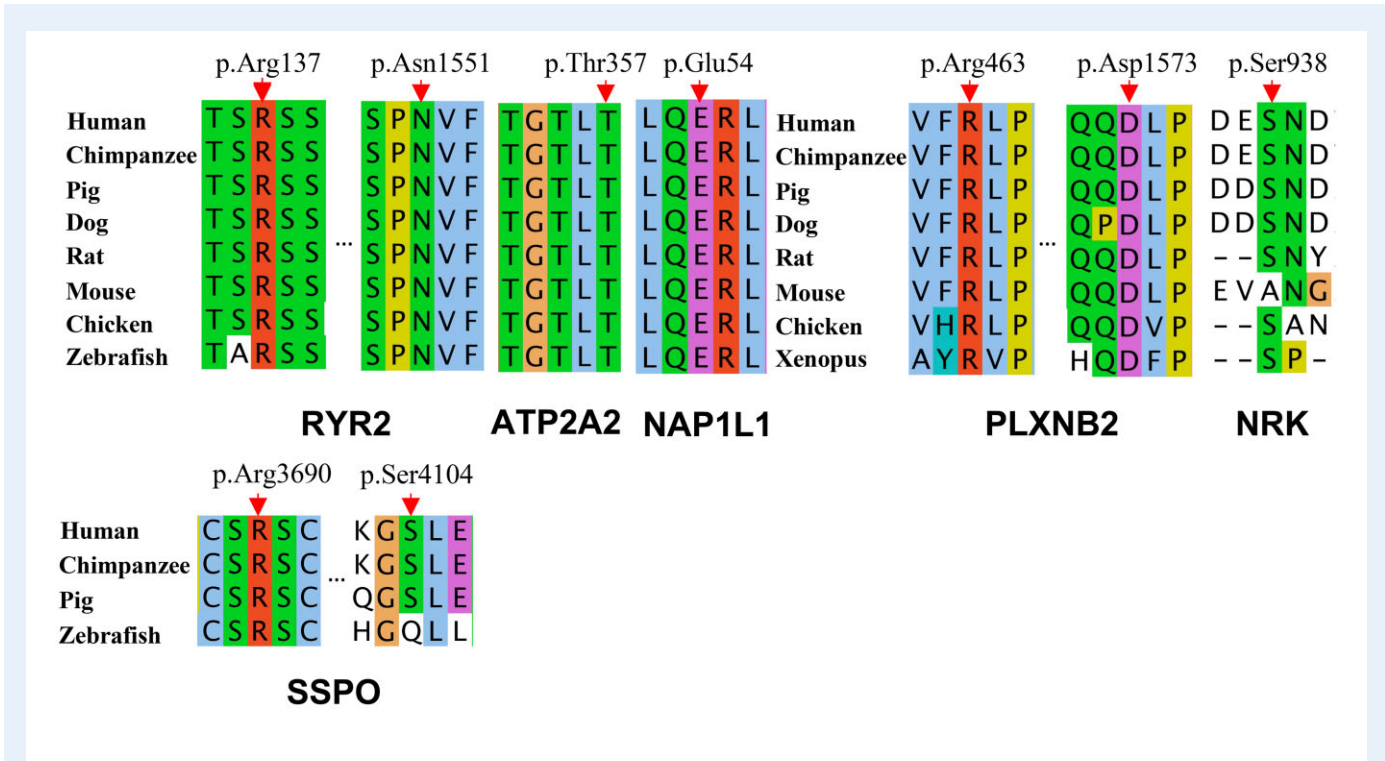


human reproduction SUPPLEMENTARY DATA



**Supplementary Figure S2. Conservation analysis of 6 putatively pathogenic genes.** Evolutionary conservation of variants in *PLXNB2* (p.D1573E and p.R463Q), *RYR2* (p.R137W and p.N1551S), *SSPO* (p.R3960H and p.S4104T), *ATP2A2* (p.T357I), *NAP1L1* (p.E54G), and *NRK* (p.S938P). The positions of variants are indicated by red arrows.