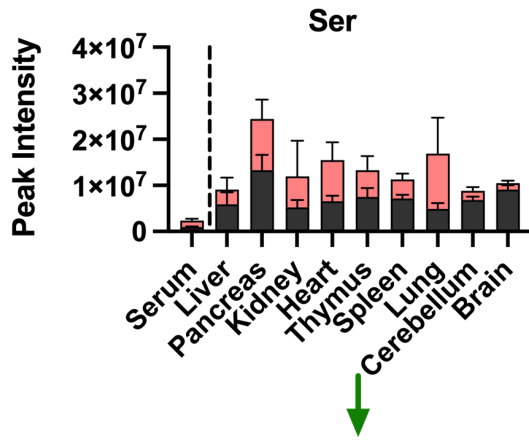
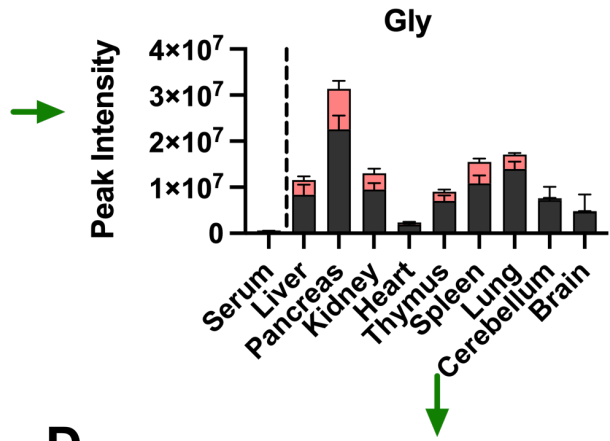


■ M+0 ■ M+1

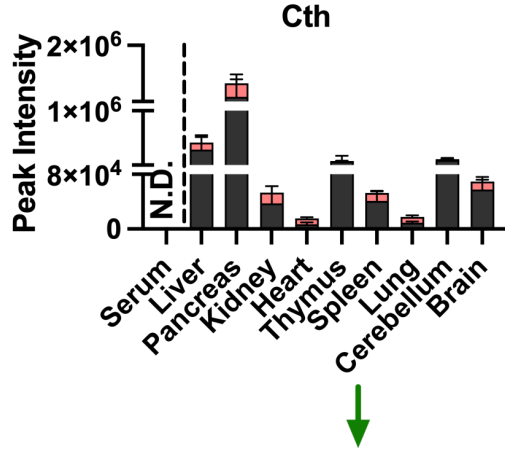
**A**



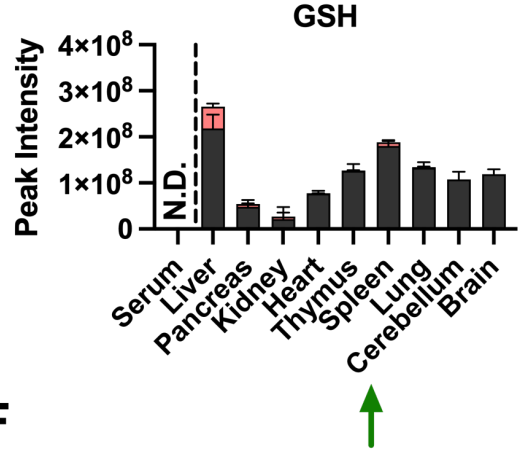
**B**



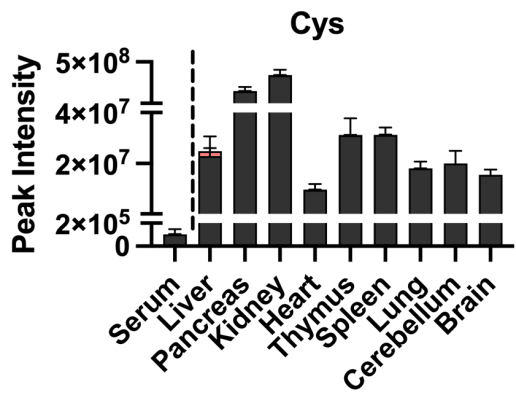
**C**



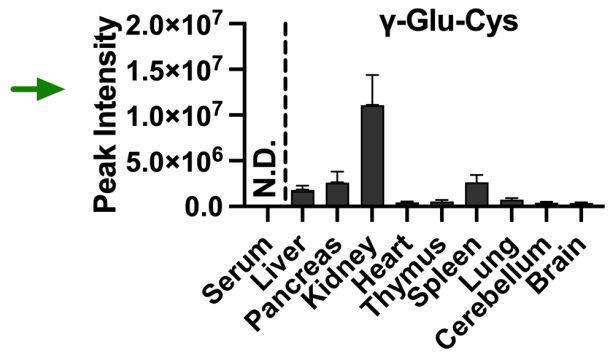
**D**



**E**



**F**



### **Supplementary Figure S3.**

Total levels of serine, cysteine and glutathione intermediates in healthy mouse tissues (related to Fig. 2). **A-F**, Healthy C57BL/6J mice were infused with 1- $^{13}\text{C}_3$ -serine for 4 hours, followed by analysis of the total signal of **A** serine, **B** glycine, **C** cystathionine, **D** glutathione, **E** cysteine and **F**  $\gamma$ -glutamylcysteine in the serum and nine different tissues (liver, pancreas, kidney, heart, thymus, spleen, lung, cerebellum, and brain) (N=10 mice). The total signal is the sum of all isotopologue signals. The peak intensities of isotopologues were measured as AreaTop (mean of three top points in the peak). Data are presented as mean  $\pm$  SD. N.D., not detected. Ser, serine; Cth, cystathionine; Cys, cysteine; Gly, glycine; GSH, glutathione;  $\gamma$ -Glu-Cys,  $\gamma$ -glutamylcysteine.