



---

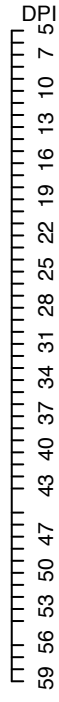
# Chronic in vivo imaging defines age-dependent alterations of neurogenesis in the mouse hippocampus

---

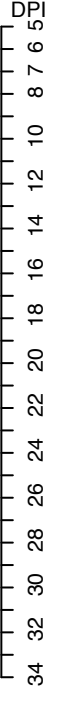
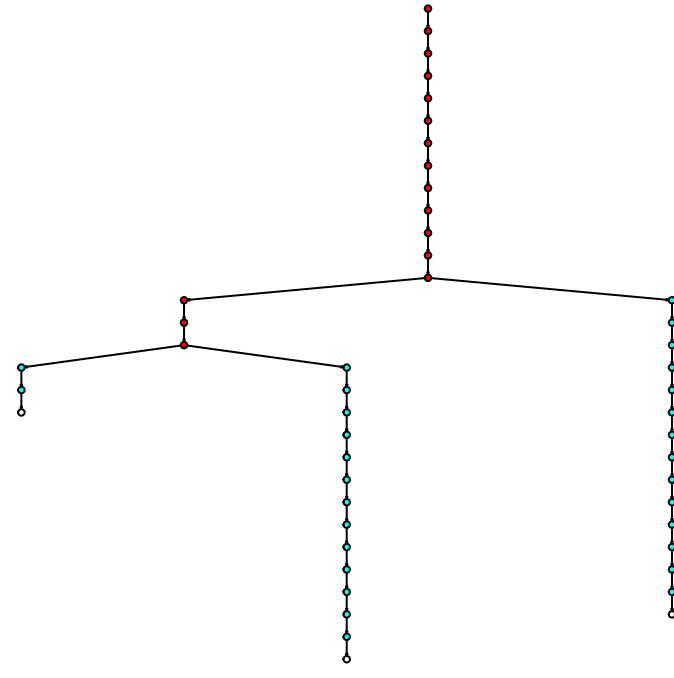
In the format provided by the authors and unedited

---

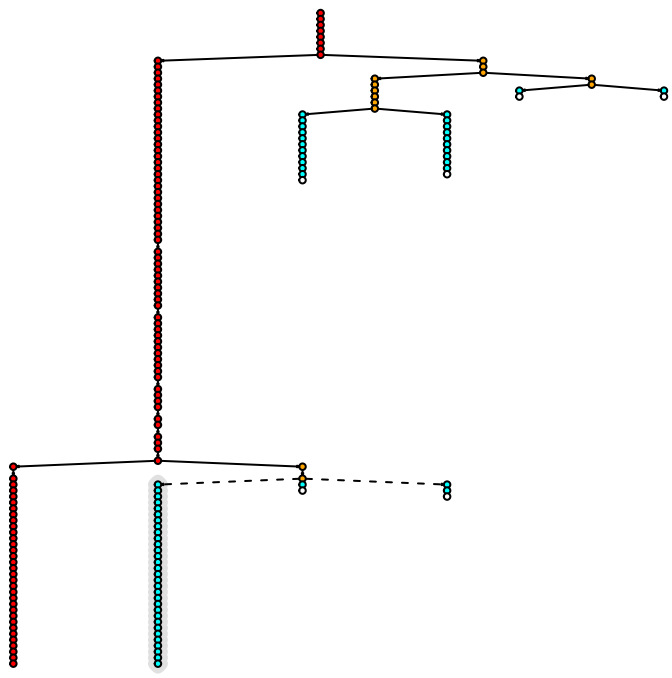
1. bf2981.SPOT1.clone1



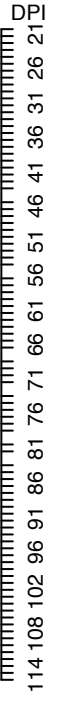
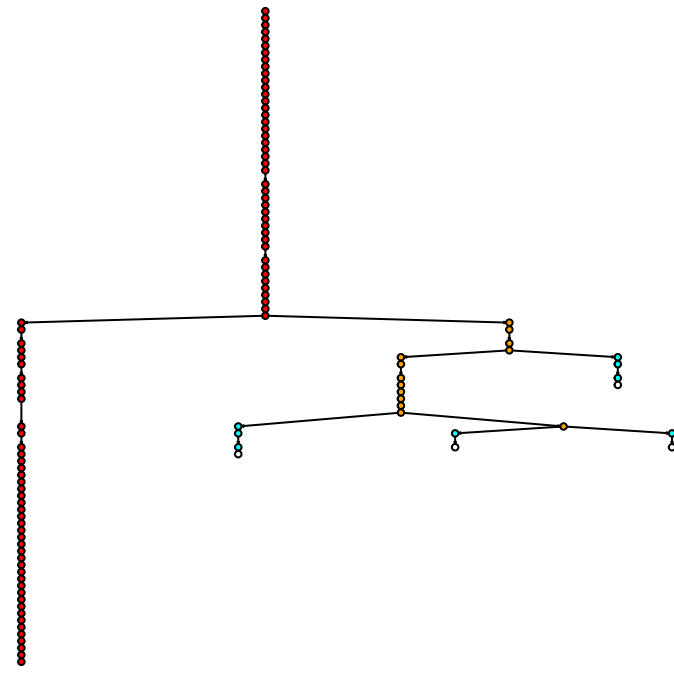
2. bf2981.SPOT1.clone2



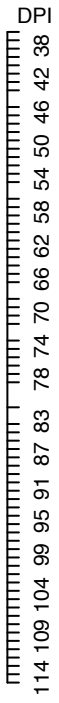
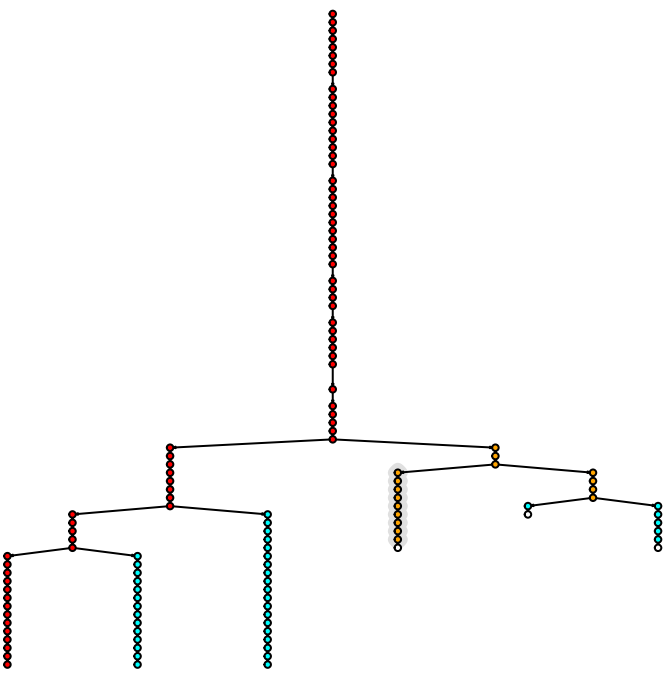
3. bf2981.SPOT1.clone3



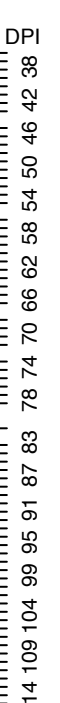
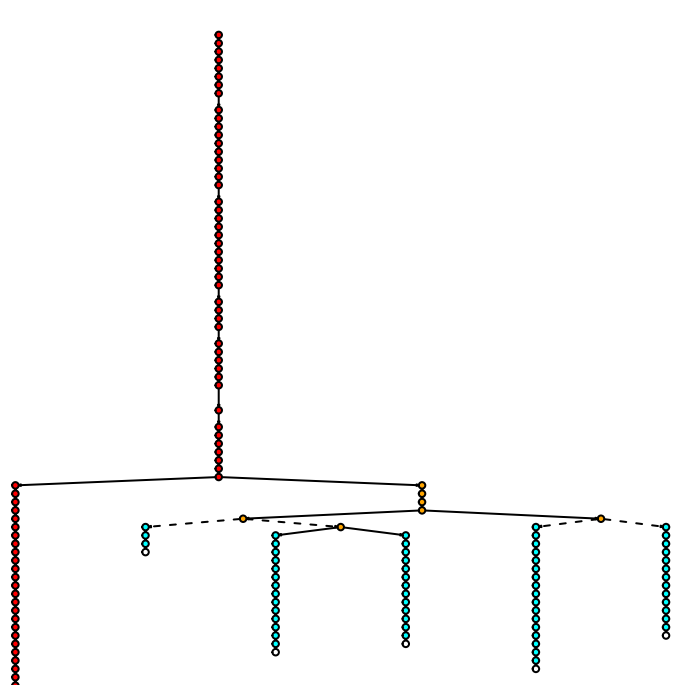
4. bf2981.SPOT10.clone1



5. bf2981.SPOT11.clone1

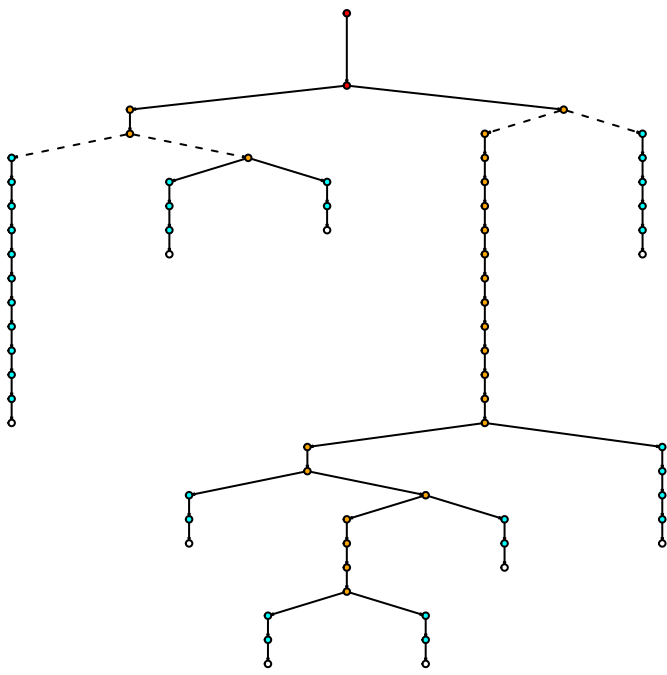


6. bf2981.SPOT11.clone2

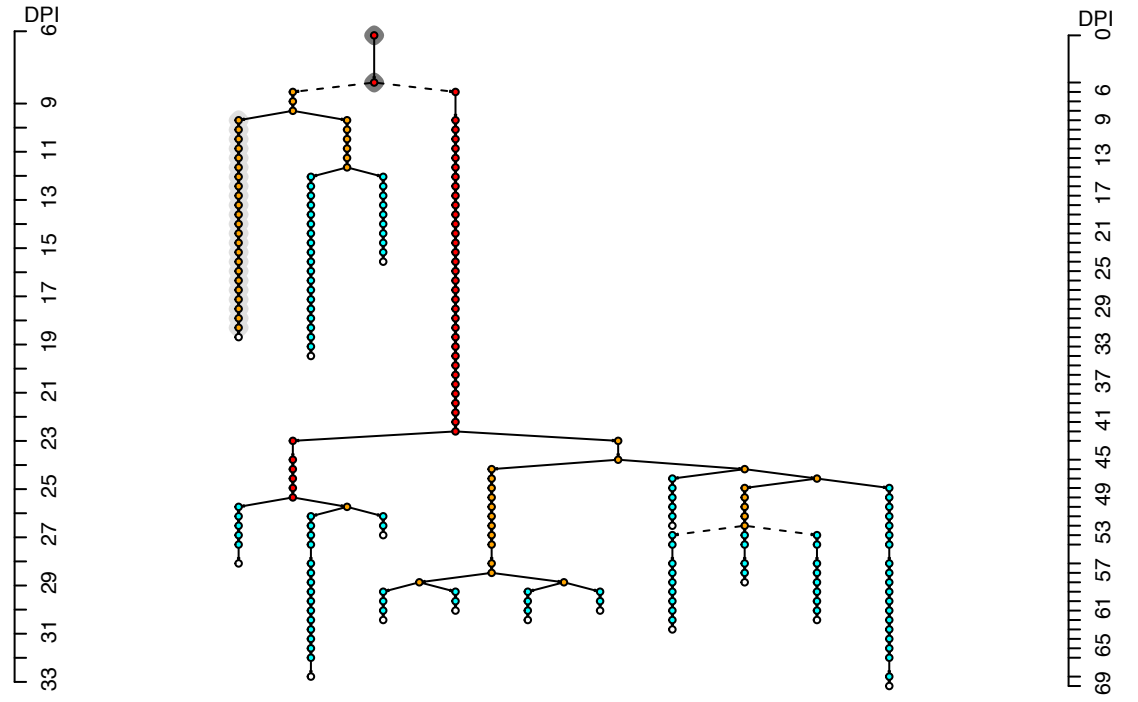


cell types	uncertainty cell type	uncertainty lineage
● R	○ semi-certain	— certain
● NR	● uncertain	- - - semi-certain
● N		⋯ uncertain
○ Cell_Death		

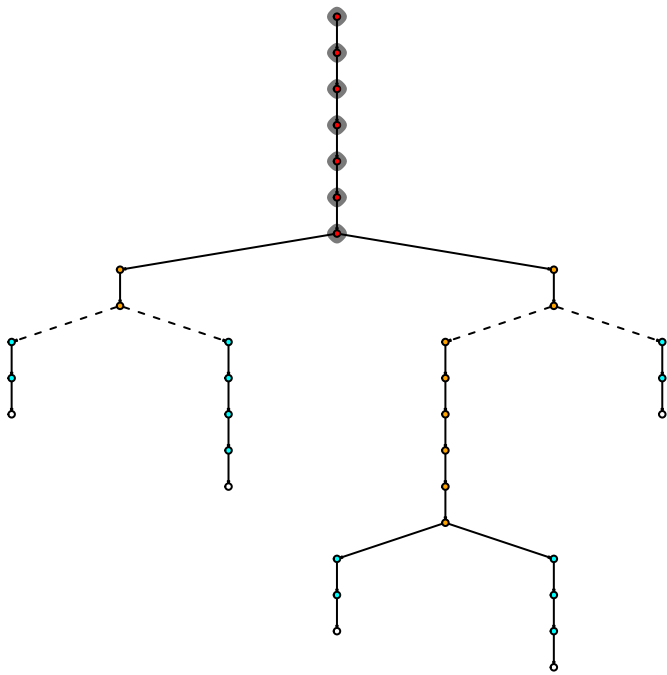
7. bf2981.SPOT3.clone1



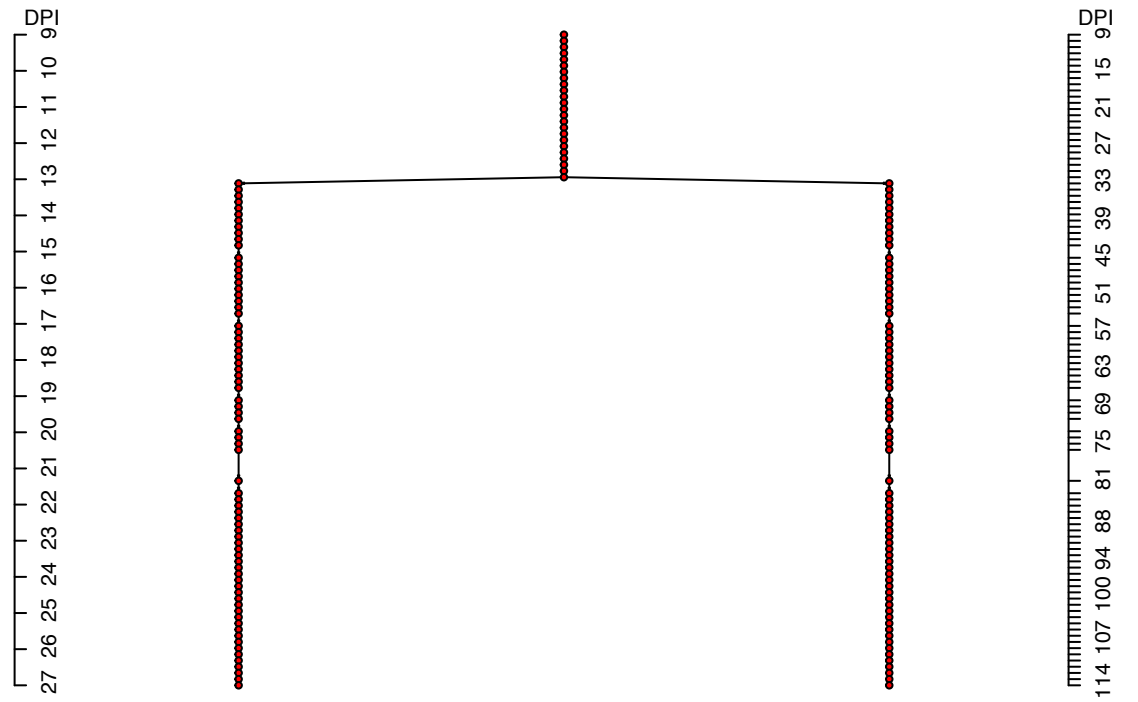
8. bf2981.SPOT3.clone2



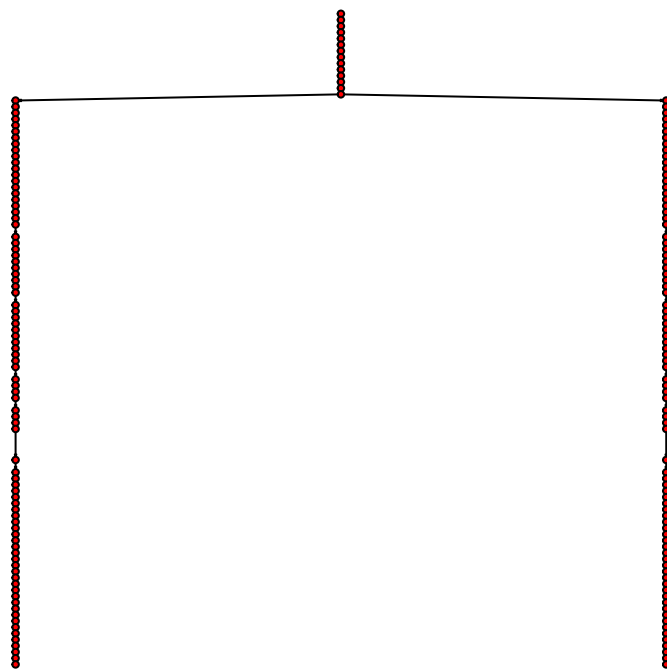
9. bf2981.SPOT5.clone1



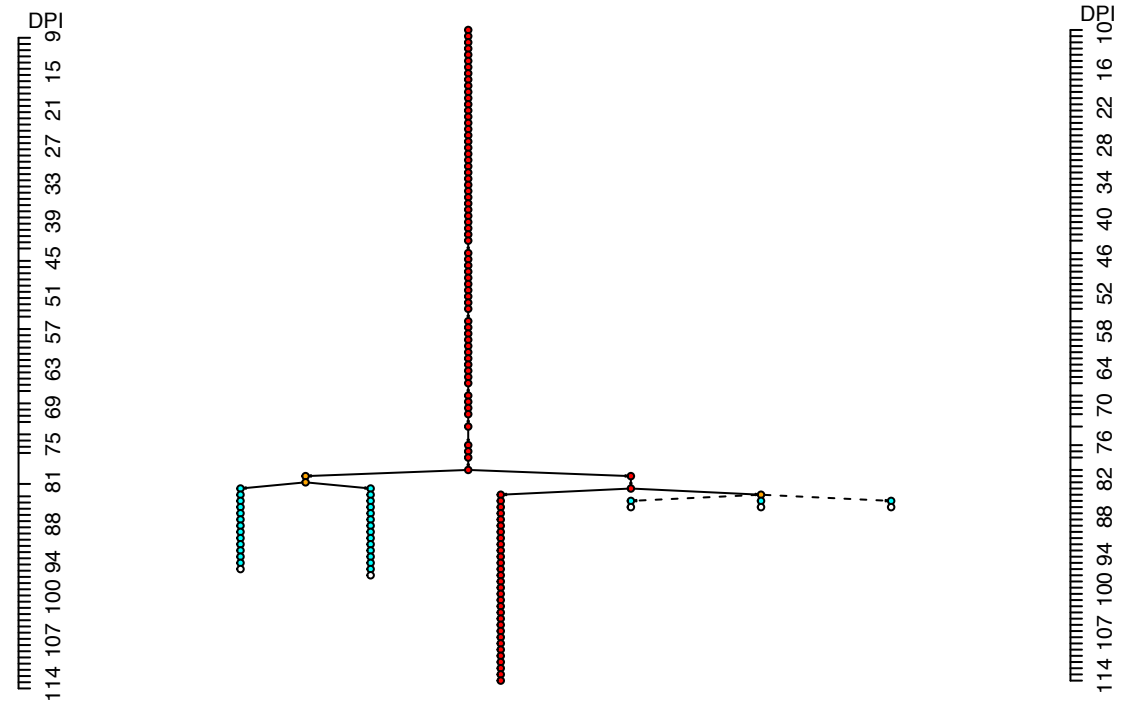
10. bf2981.SPOT5.clone2



11. bf2981.SPOT5.clone3



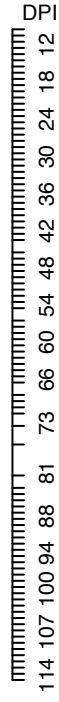
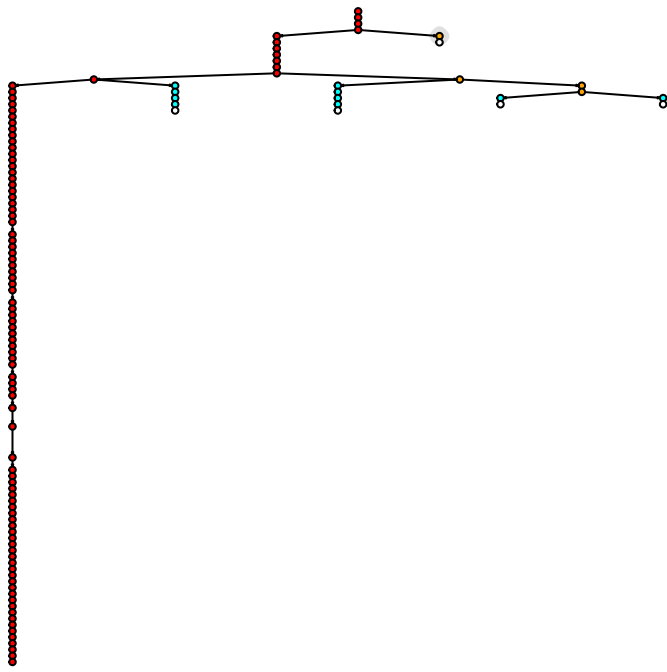
12. bf2981.SPOT6.clone1



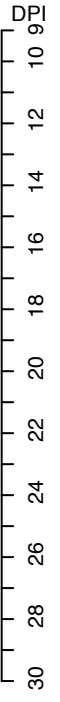
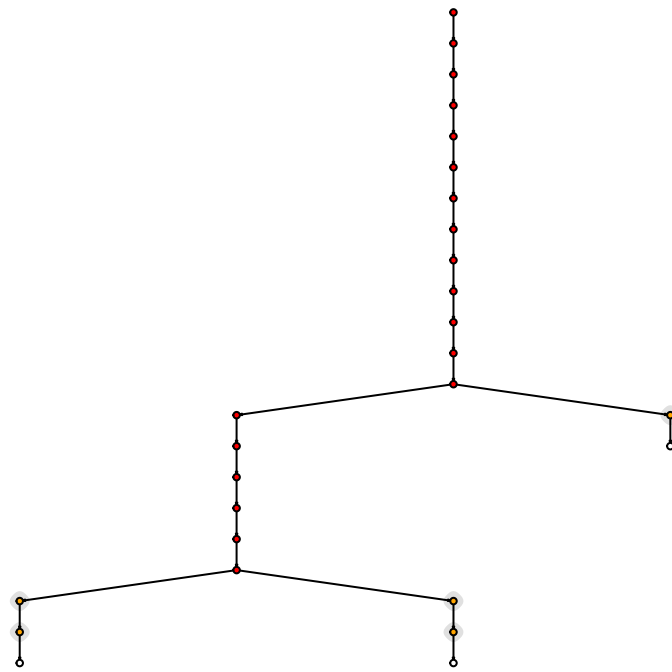
cell types    uncertainty cell type    uncertainty lineage

- R
- NR
- N
- Cell\_Death
- semi-certain
- uncertain
- certain
- - - semi-certain
- ... uncertain

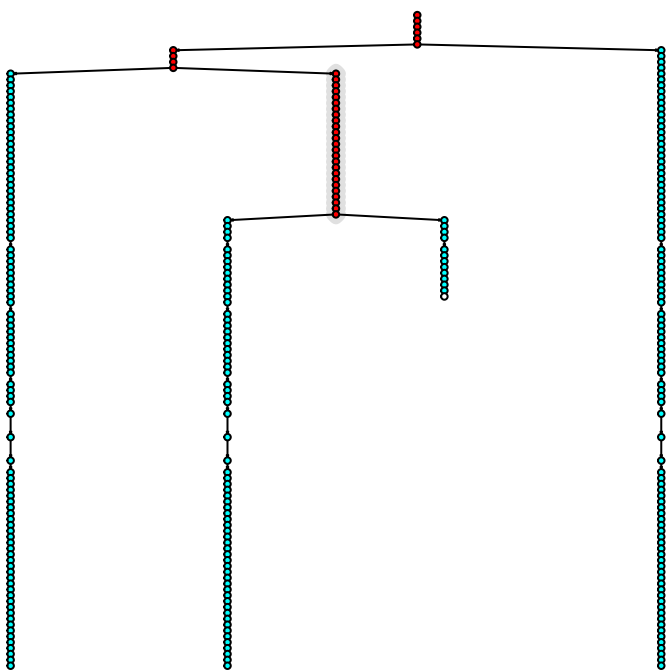
13. bf2981.SPOT6.clone2



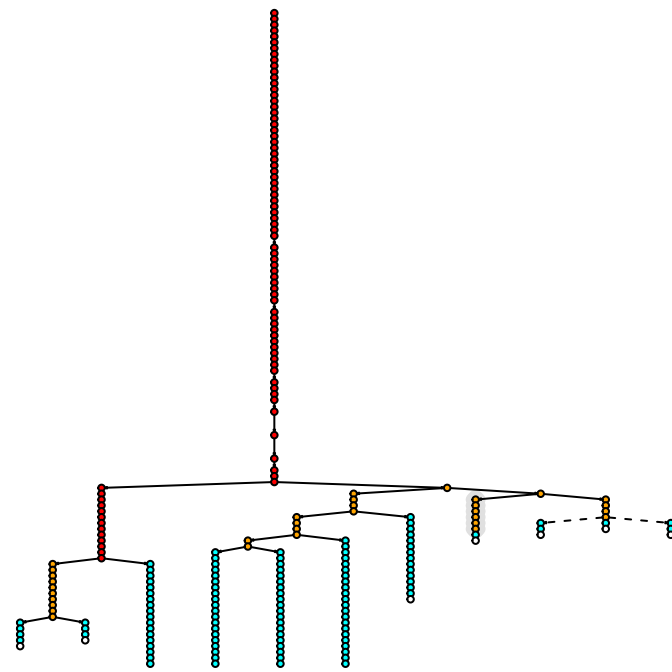
14. bf2981.SPOT6.clone3



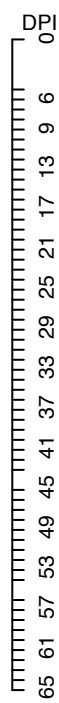
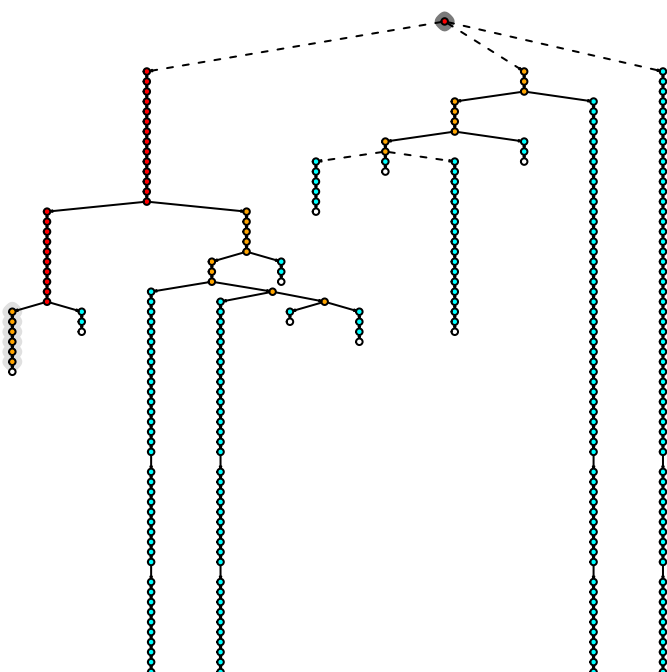
15. bf2983.SPOT1.clone1



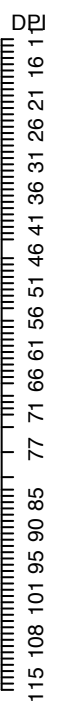
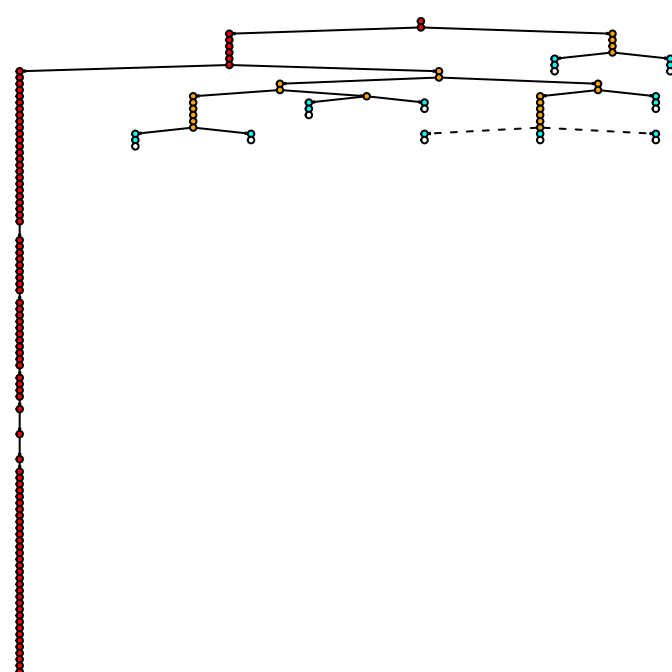
16. bf2983.SPOT1.clone2



17. bf2983.SPOT1.clone3



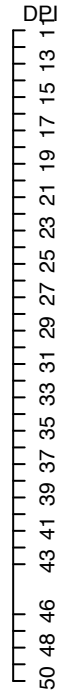
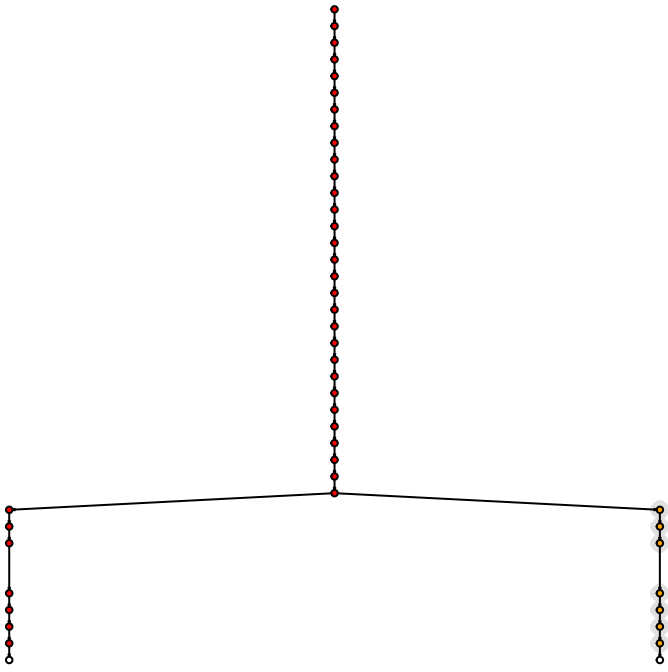
18. bf2983.SPOT10.clone1



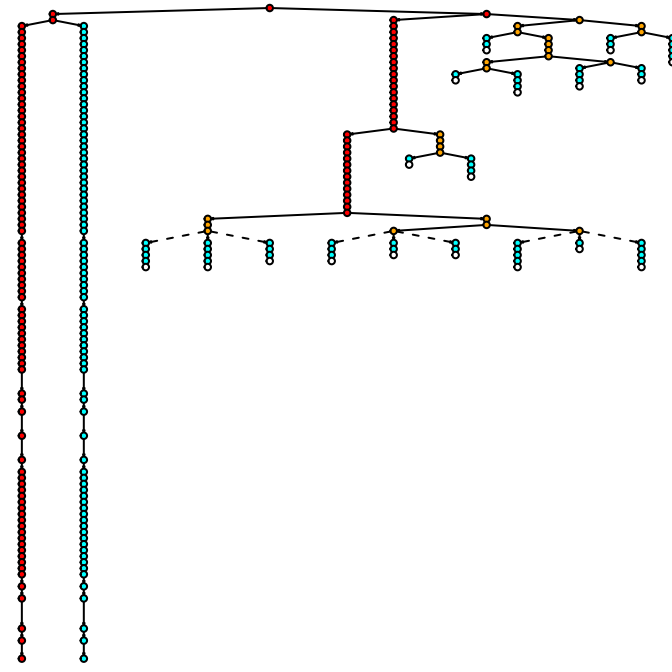
cell types    uncertainty cell type    uncertainty lineage

- R
- NR
- N
- Cell\_Death
- semi-certain
- uncertain
- certain
- - - semi-certain
- · · uncertain

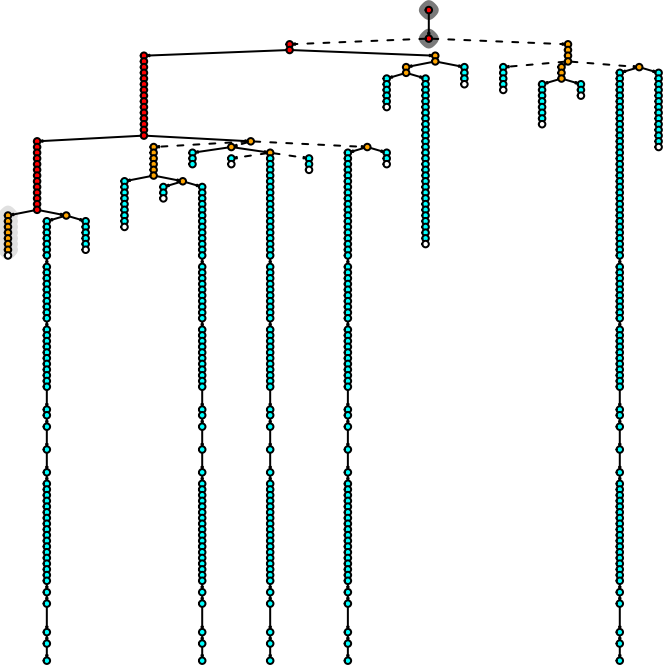
19. bf2983.SPOT10.clone2



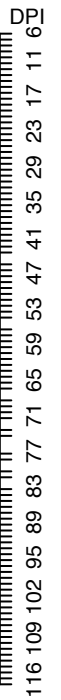
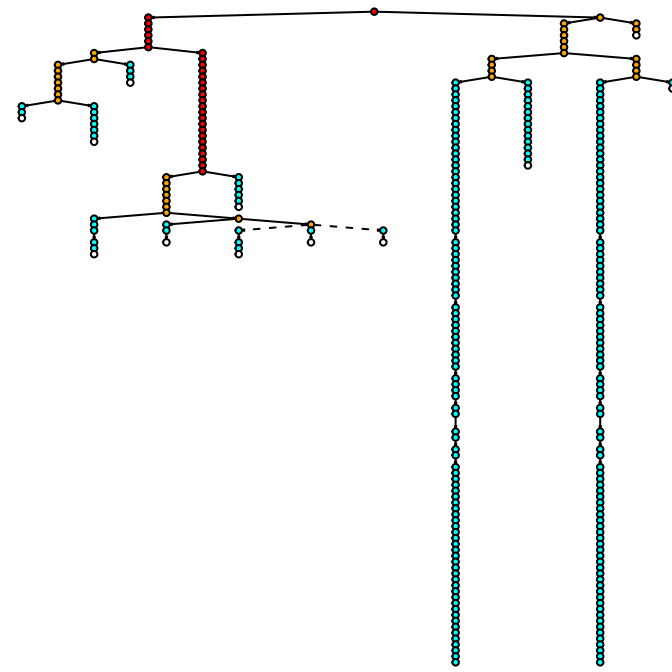
20. bf2983.SPOT2.clone1



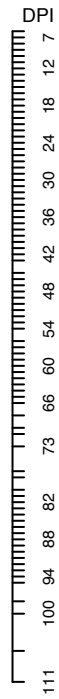
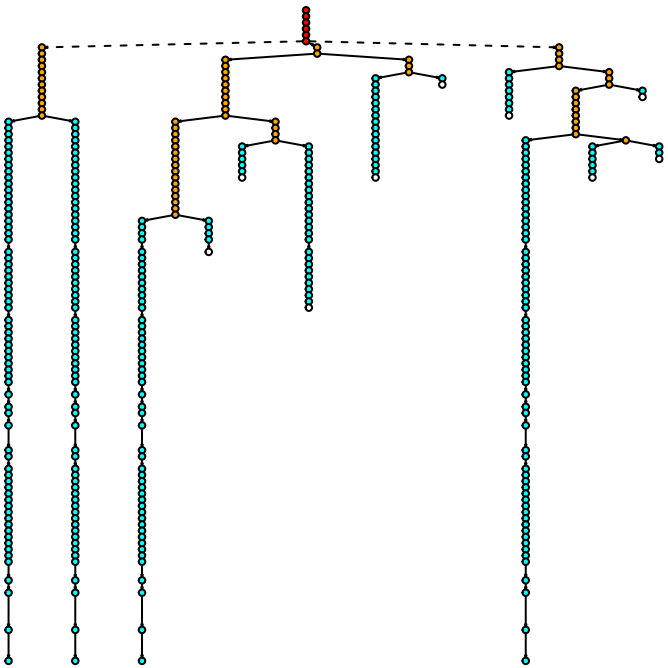
21. bf2983.SPOT2.clone2



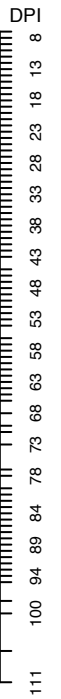
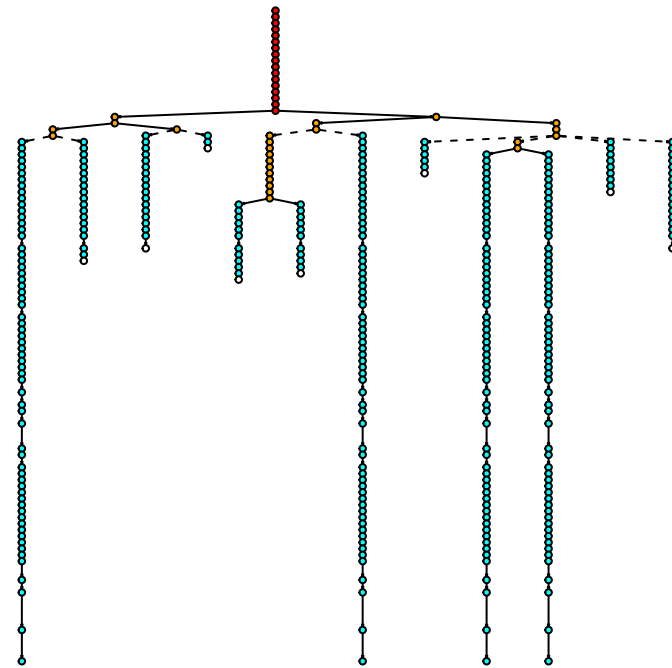
22. bf2983.SPOT3.clone1



23. bf2983.SPOT5.clone1



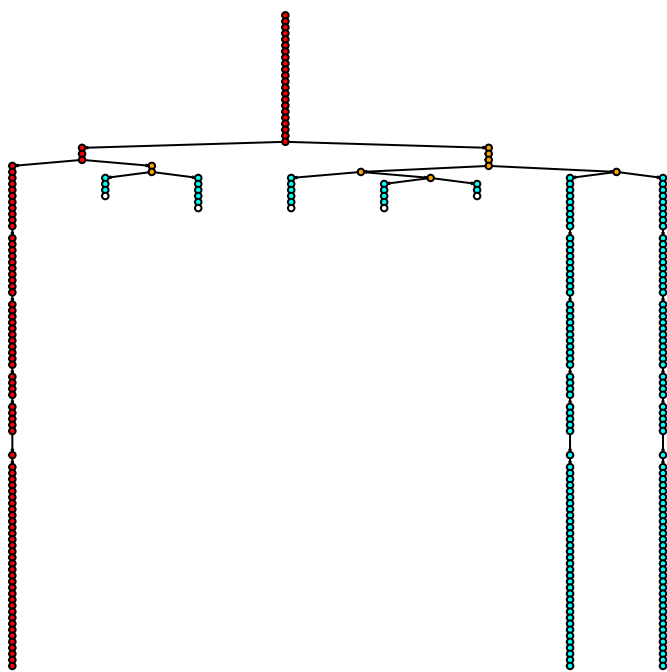
24. bf2983.SPOT5.clone2



cell types    uncertainty cell type    uncertainty lineage

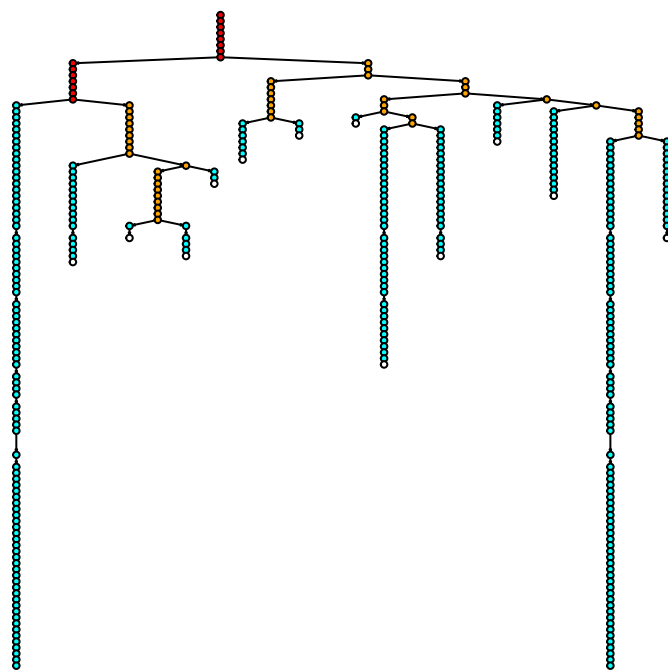
- R
- NR
- N
- Cell\_Death
- semi-certain
- uncertain
- certain
- - - semi-certain
- · · uncertain

25. bf2983.SPOT7.clone1



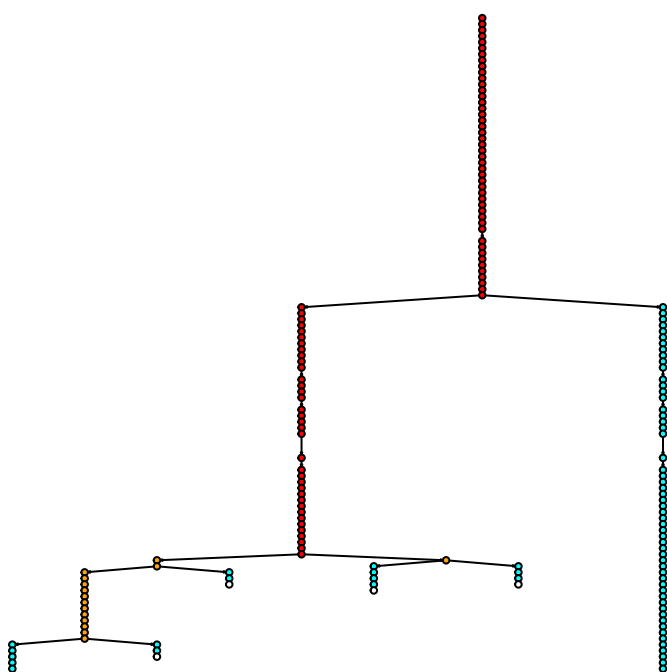
DPI  
116 109 102 96 90 84 77 71 65 59 53 47 41 35 29 23 17 11

26. bf2983.SPOT7.clone2



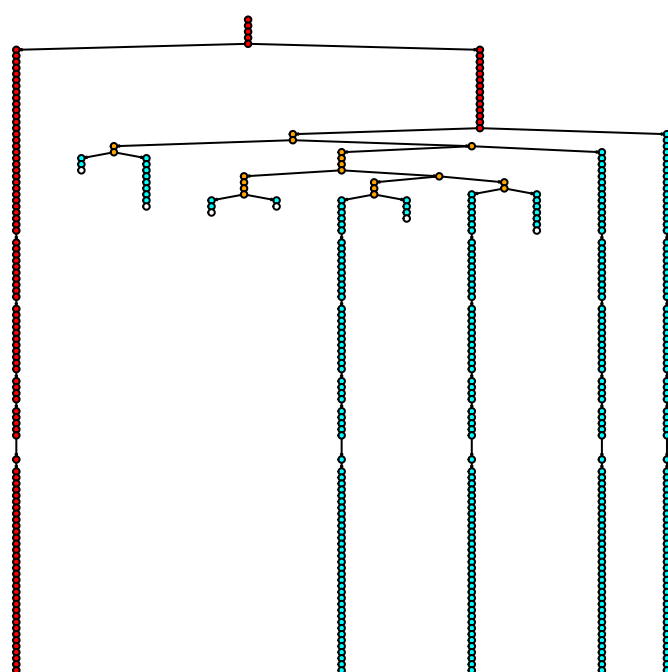
DPI  
116 109 102 96 90 84 77 71 65 59 53 47 41 35 29 23 17 11

27. bf2983.SPOT7.clone3



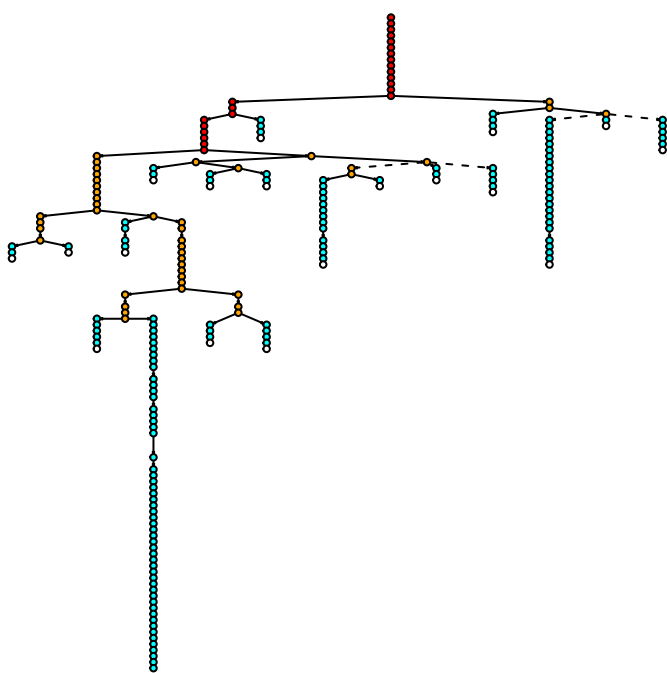
DPI  
116 109 102 96 90 84 77 71 65 59 53 47 41 35 29 23 17 11

28. bf2983.SPOT7.clone5



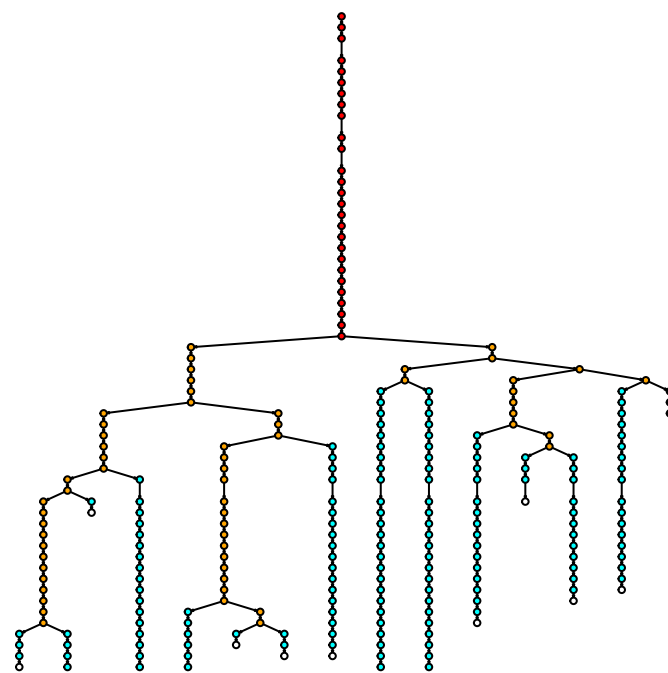
DPI  
116 109 102 96 90 84 77 71 65 59 53 47 41 35 29 23 17 11

29. bf2983.SPOT7.clone6



DPI  
116 109 102 96 90 84 77 71 65 59 53 47 41 35 29 23 17 11

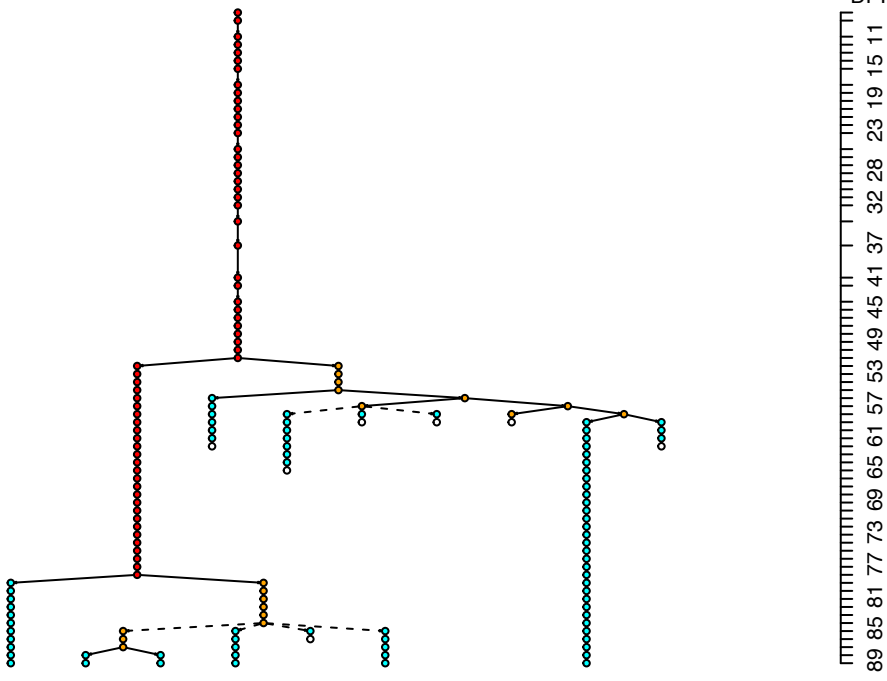
30. bf2985.SPOT14.clone1



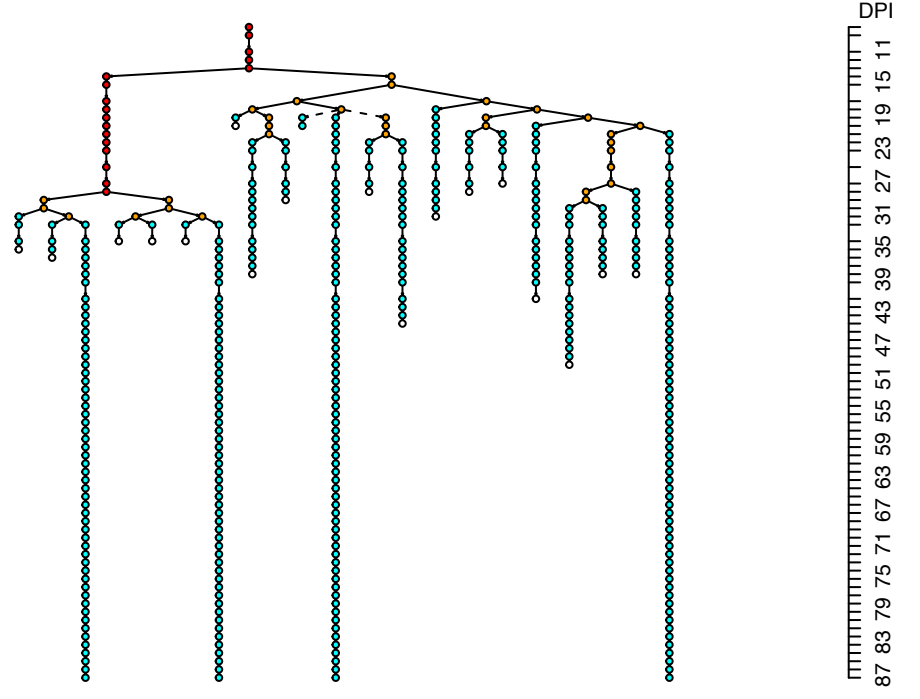
DPI  
89 86 83 80 77 74 71 68 65 62 59 56 53 50 47 44 41 38 35 32

cell types	uncertainty cell type	uncertainty lineage
● R	○ semi-certain	— certain
● NR	● uncertain	- - - semi-certain
● N		... uncertain
○ Cell_Death		

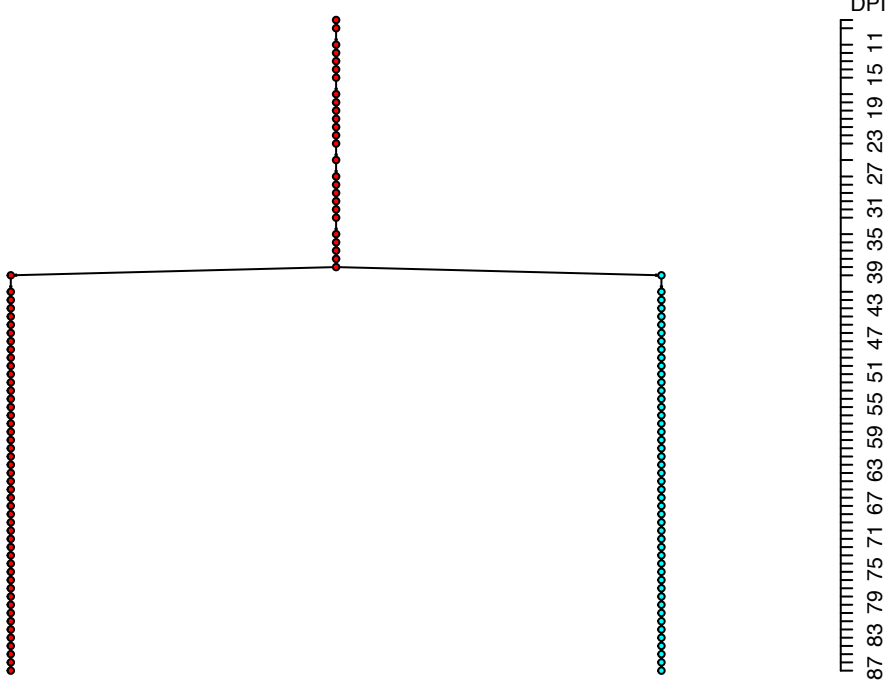
31. bf2985.SPOT2.clone1



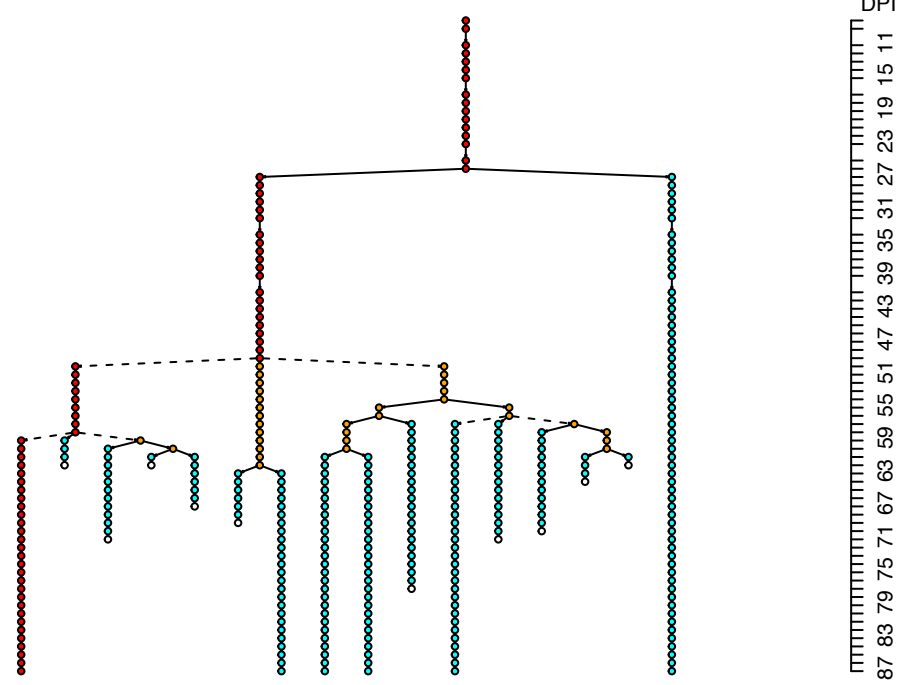
32. bf2985.SPOT4.clone1



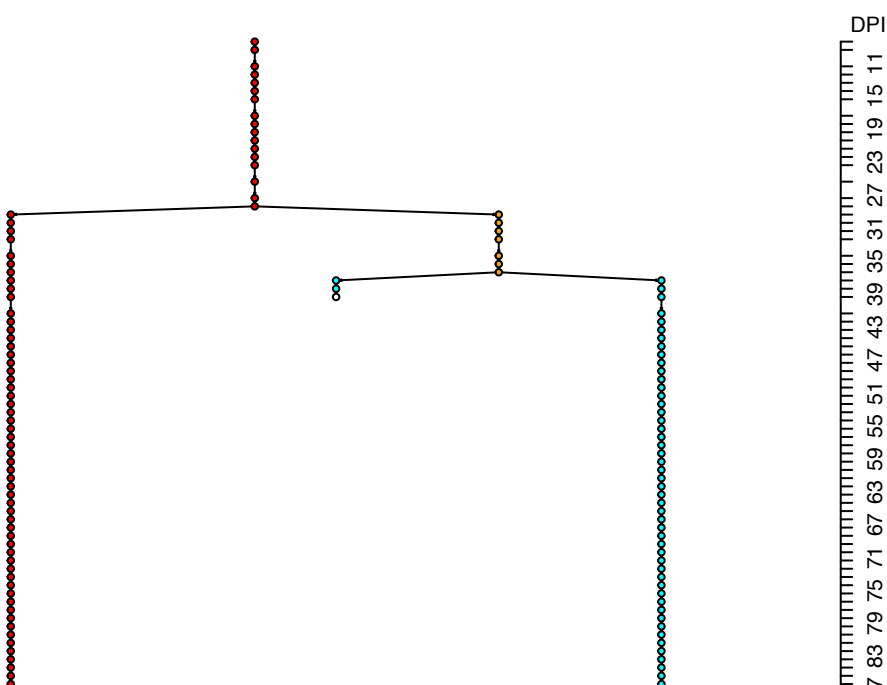
33. bf2985.SPOT4.clone2



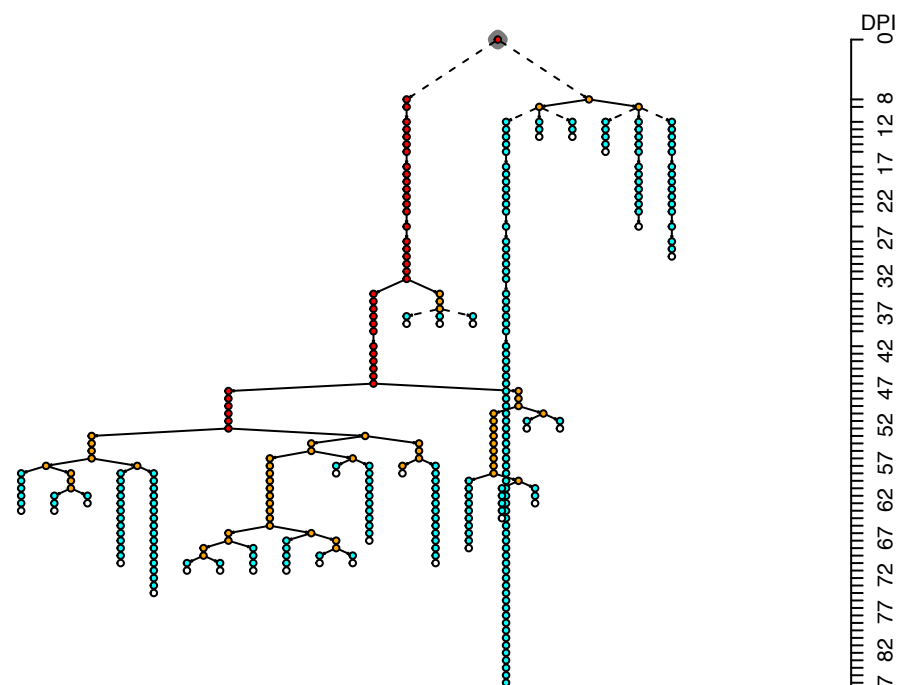
34. bf2985.SPOT4.clone3



35. bf2985.SPOT4.clone5

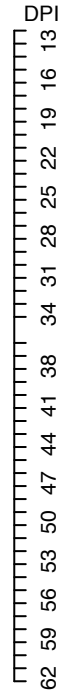
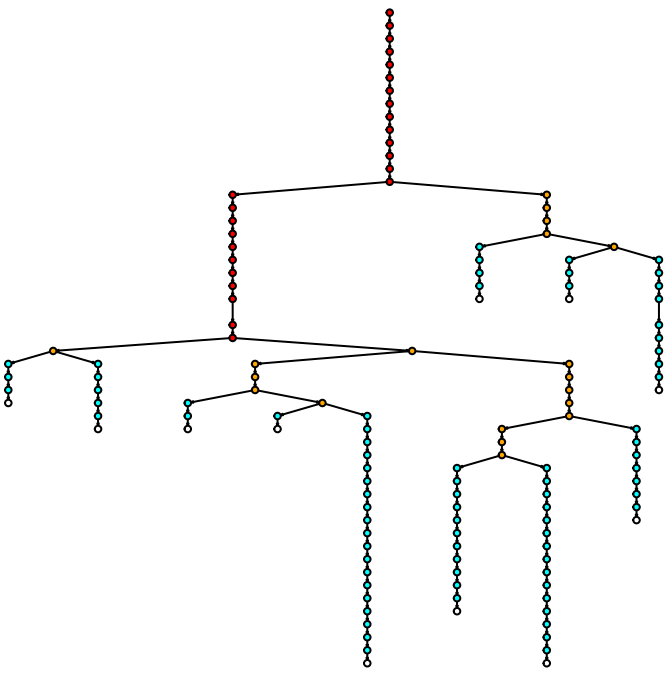


36. bf2985.SPOT4.clone7

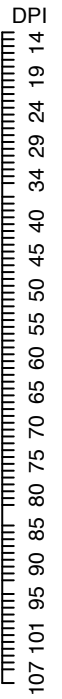
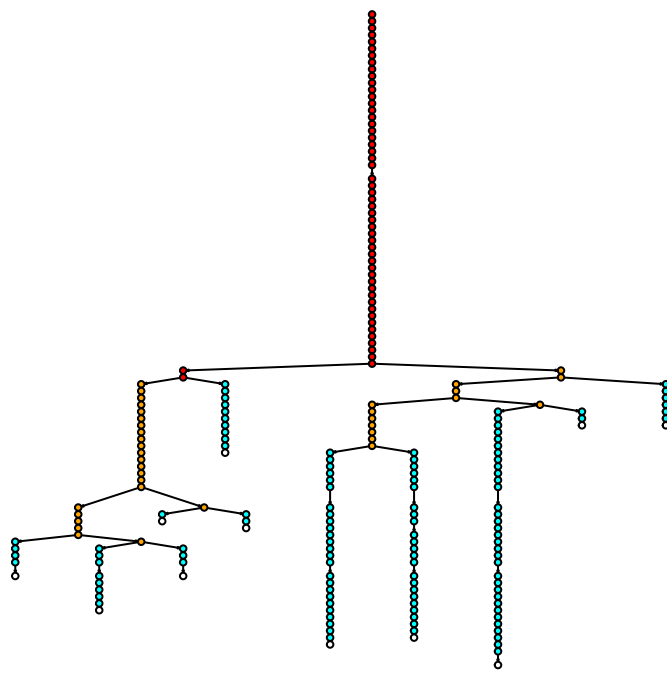


cell types    uncertainty cell type    uncertainty lineage  
 ● R            ○ semi-certain            — certain  
 ● NR           ● uncertain            - - - semi-certain  
 ● N            ○ Cell\_Death            ···· uncertain

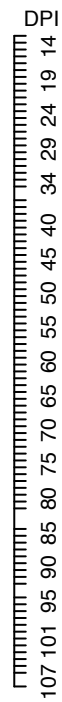
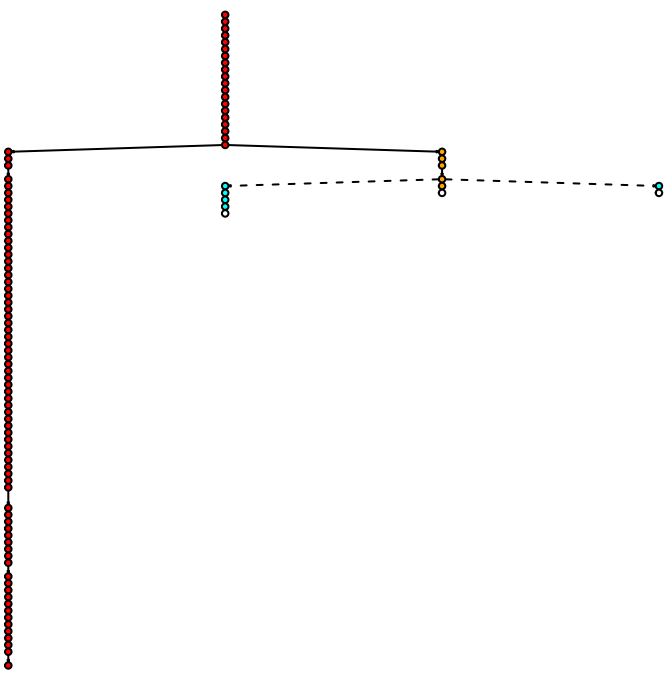
37. bf3419.SPOT12.clone1



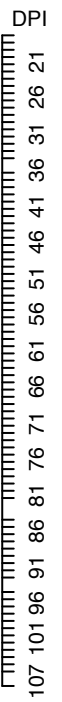
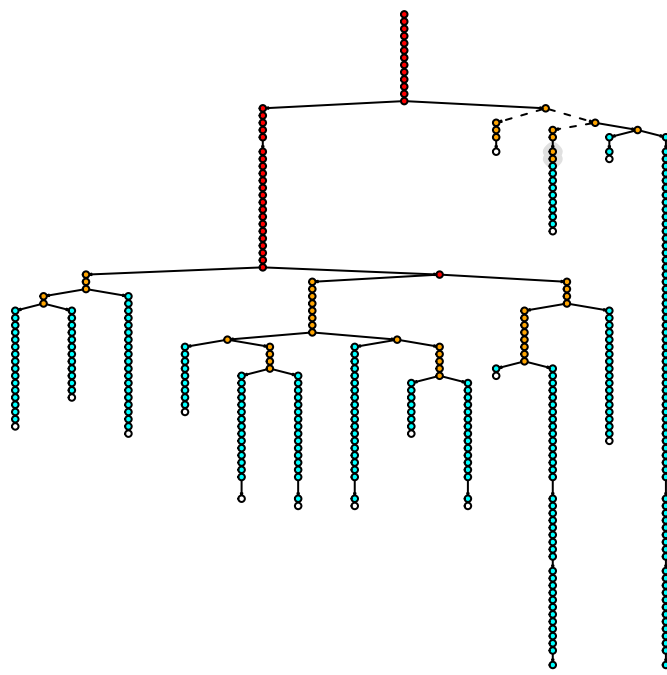
38. bf3419.SPOT12.clone2



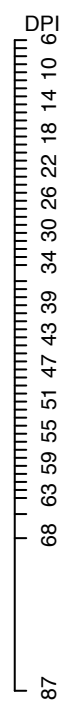
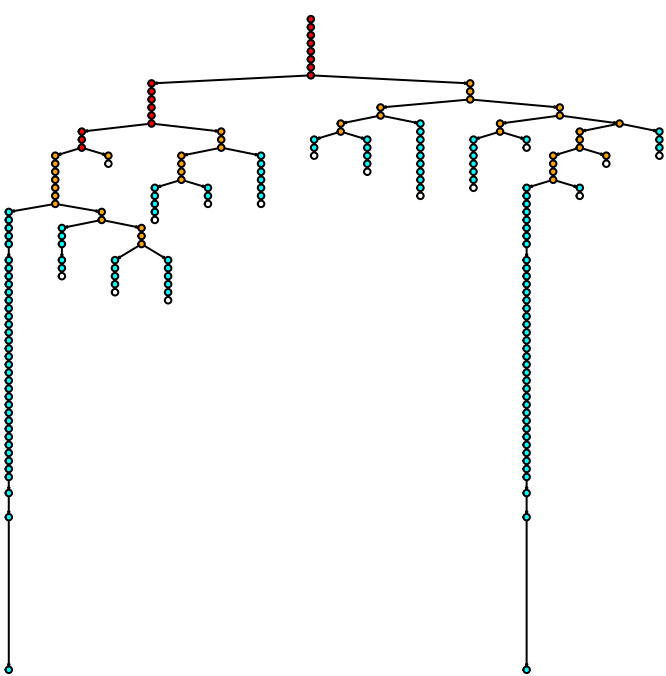
39. bf3419.SPOT12.clone3



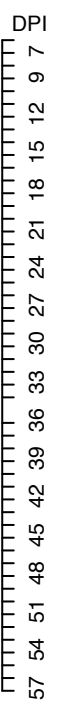
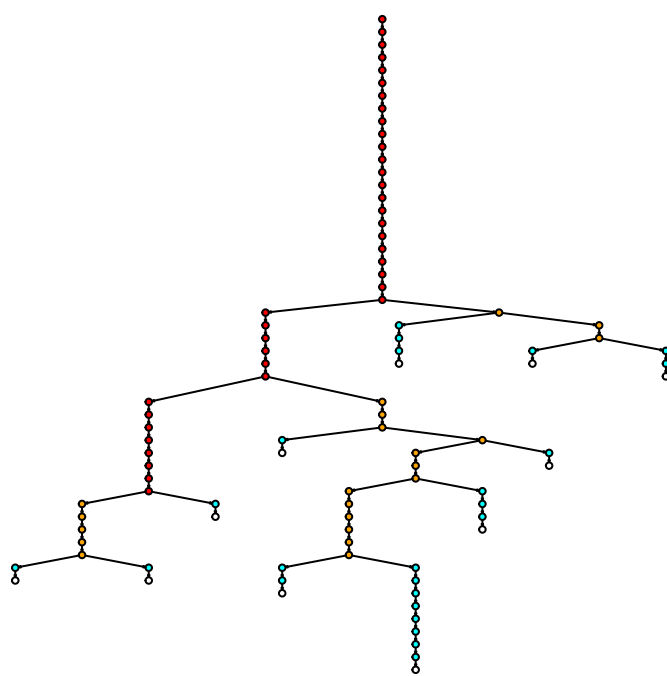
40. bf3419.SPOT14.clone1



41. bf3419.SPOT6.clone1



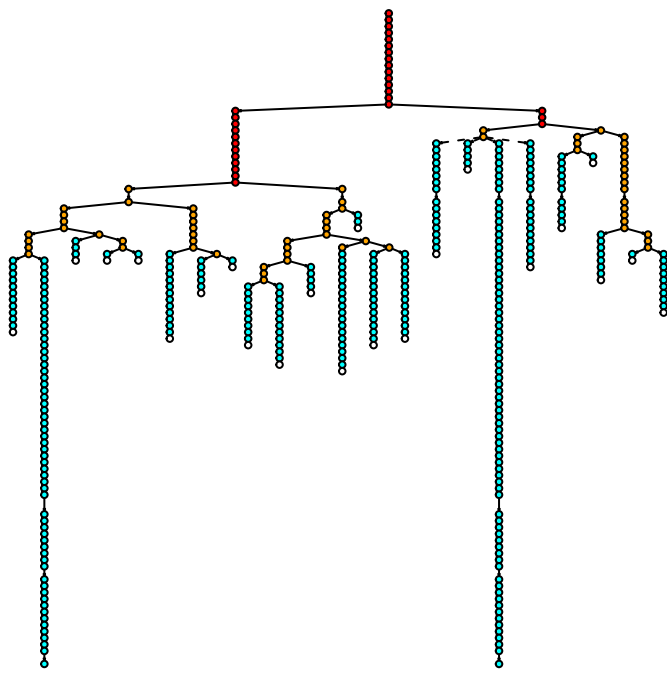
42. bf3419.SPOT6.clone2



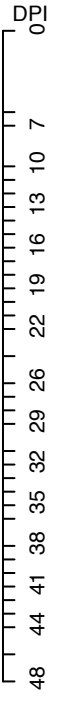
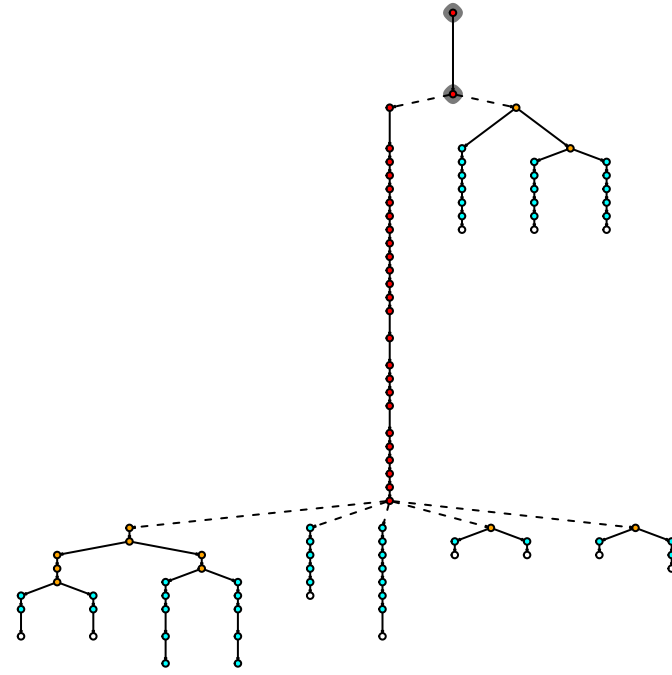
cell types	uncertainty cell type	uncertainty lineage
● R	○ semi-certain	— certain
● NR	● uncertain	- - - semi-certain
● N		⋯ uncertain
○ Cell_Death		



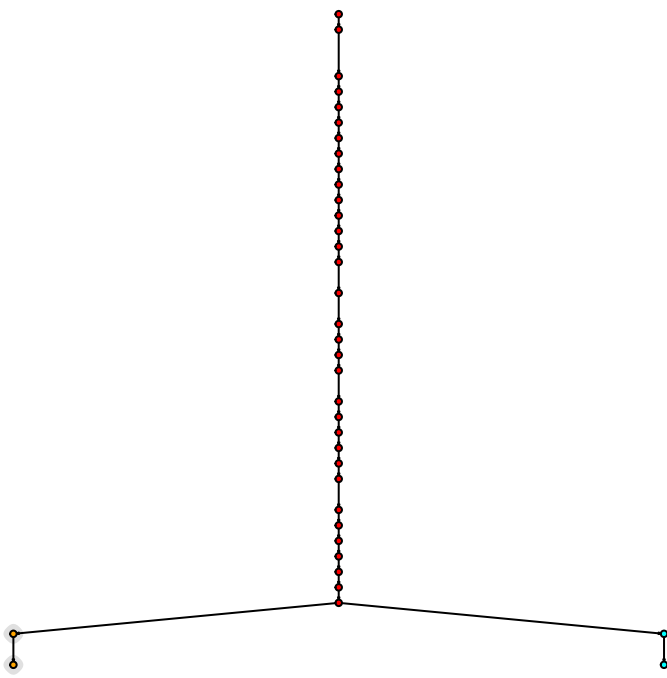
43. bf3419.SPOT7.clone1



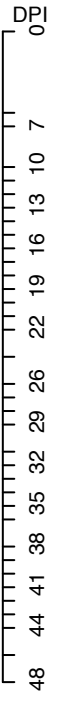
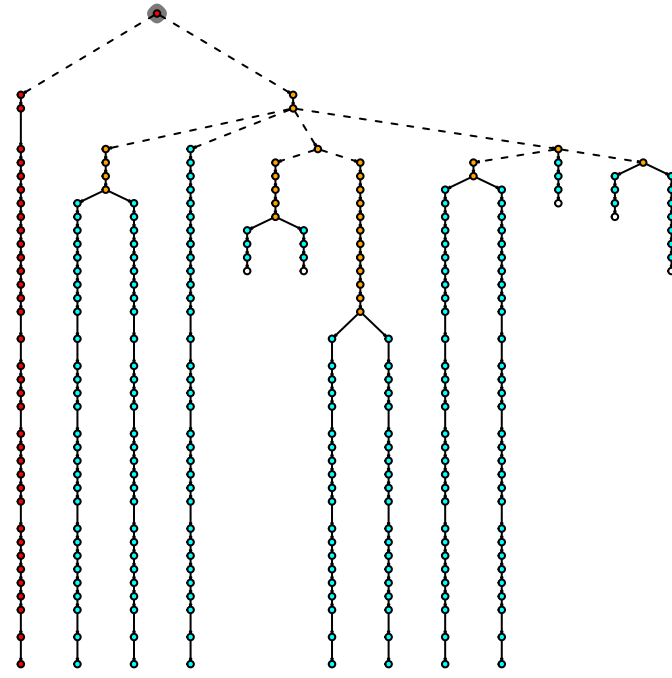
44. bf4845.SPOT3.clone1



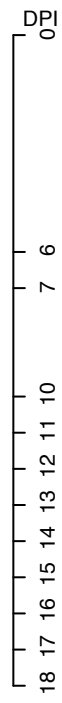
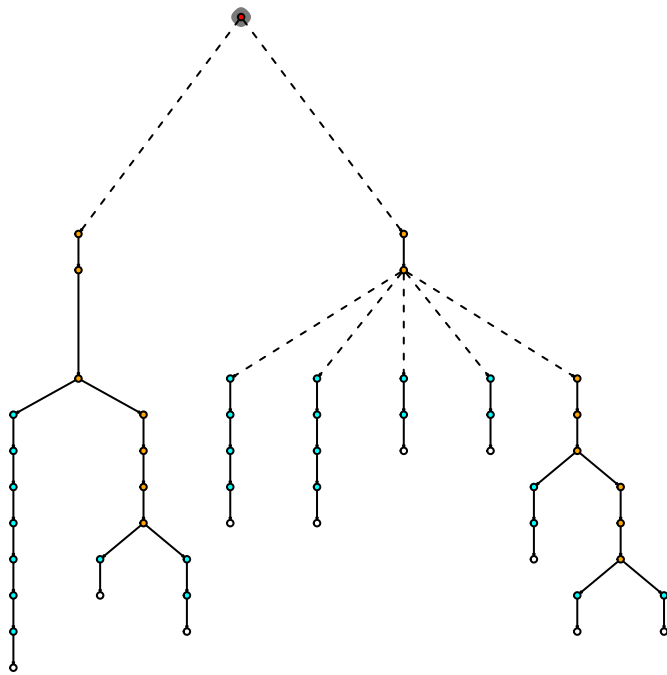
45. bf4845.SPOT4.clone1



46. bf4845.SPOT4.clone2



47. bf4845.SPOT4.clone3



cell types    uncertainty cell type    uncertainty lineage

- R
- NR
- N
- Cell\_Death
- semi-certain
- uncertain
- certain
- - - semi-certain
- ⋯ uncertain