

Supplementary Material

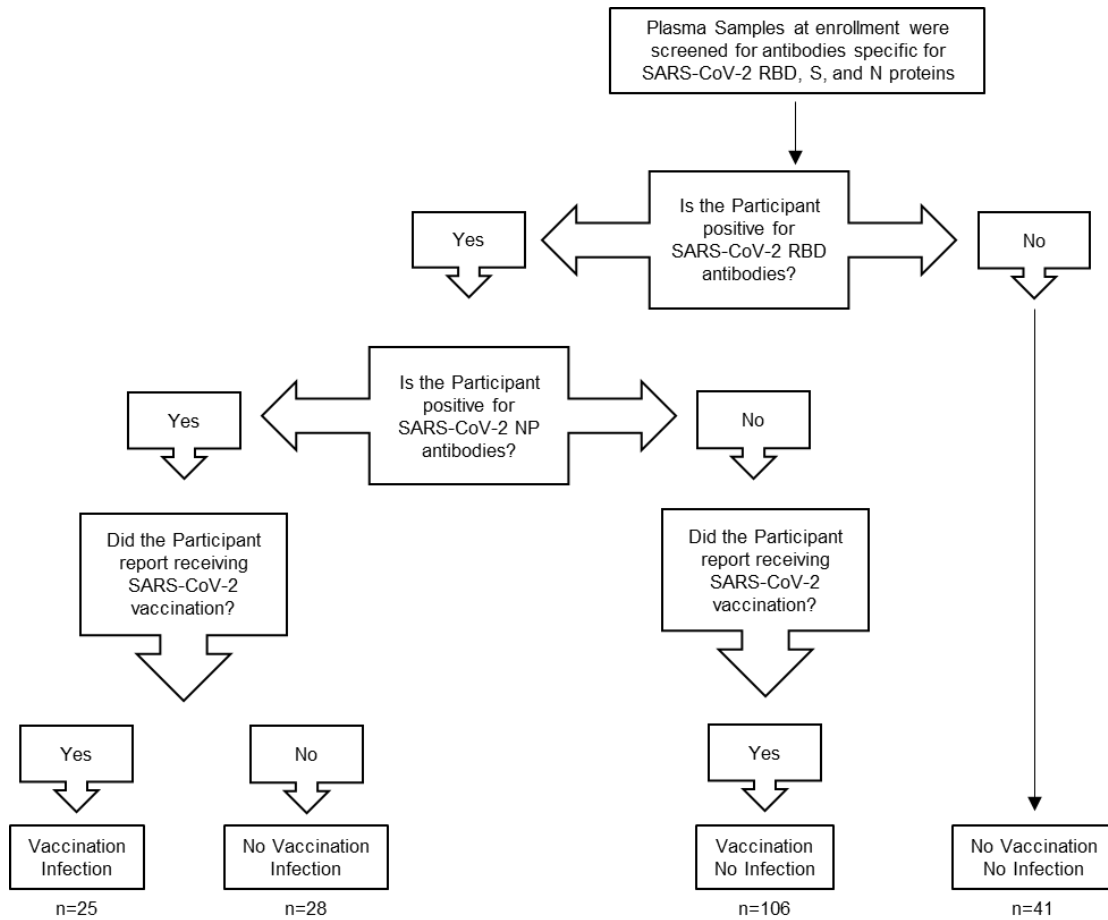
Longitudinal analysis of SARS-CoV-2 infection and vaccination in the LA-SPARTA cohort reveals increased risk of infection in vaccinated Hispanic participants

Meagan M. Jenkins¹, Donna Phan Tran², Evelyn A. Flores², Deborah Kupferwasser², Harry Pickering¹, Ying Zheng¹, David W. Gjertson^{1,3}, Ted M. Ross^{4,5}, Joanna M. Schaeffer^{6,7†}, Loren G. Miller^{2,6,8,7†}, Michael R. Yeaman^{6,8-10†}, Elaine F. Reed^{1*†}

* **Correspondence:** Elaine F. Reed: ereed@mednet.ucla.edu

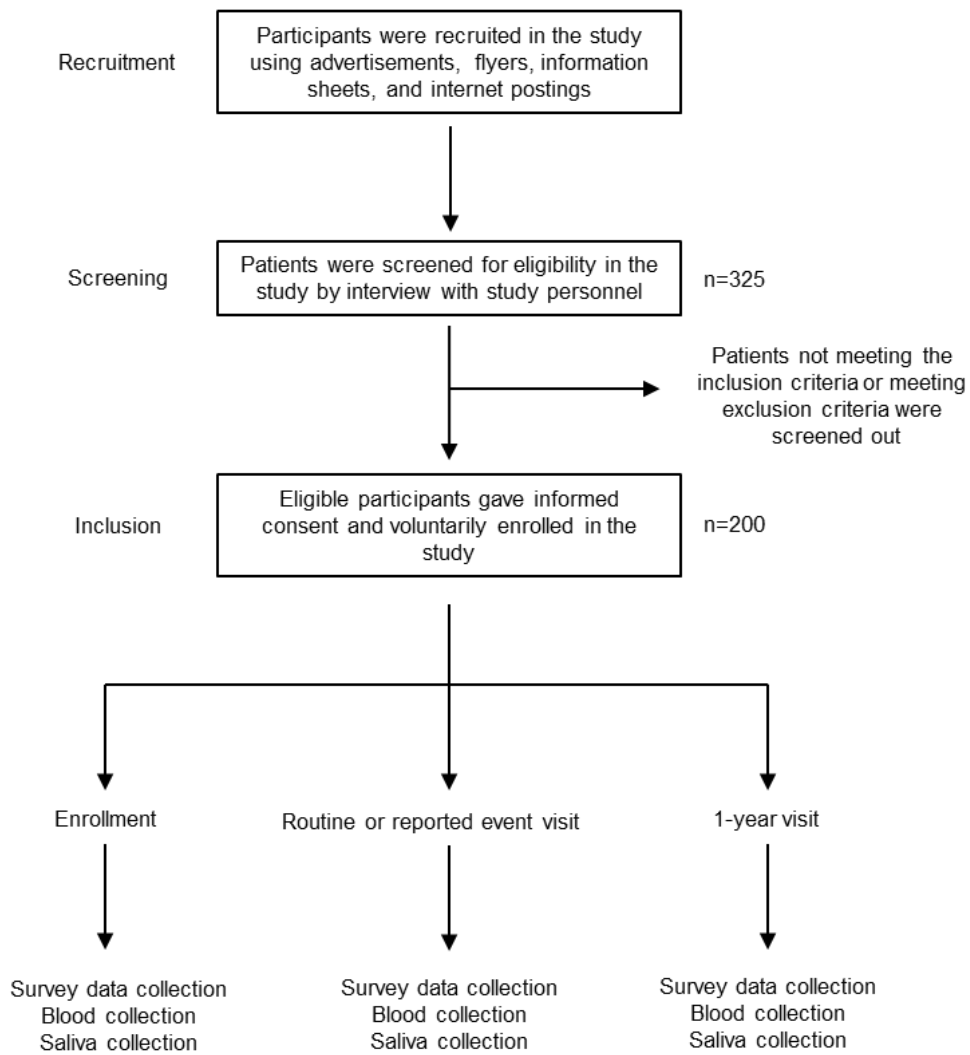
1 Supplementary Figures and Tables

1.1 Supplementary Figures



Supplemental Figure 1. Flow Chart of participant grouping at enrollment based on serology. The participant’s plasma was tested for anti-SARS-CoV-2 S, RBD, and NP antibodies, and grouped based on RBD and NP responses at enrollment. This flow chart outlines how the participants were grouped based on this.

Supplemental Figure 2



Supplemental Figure 2. Study Design Flow Chart. This figure shows the work flow of participant recruitment, screening, inclusion, enrollment, and sample collection.