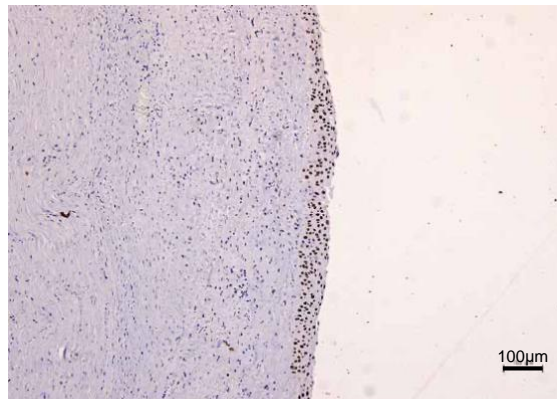


Supplementary Figure

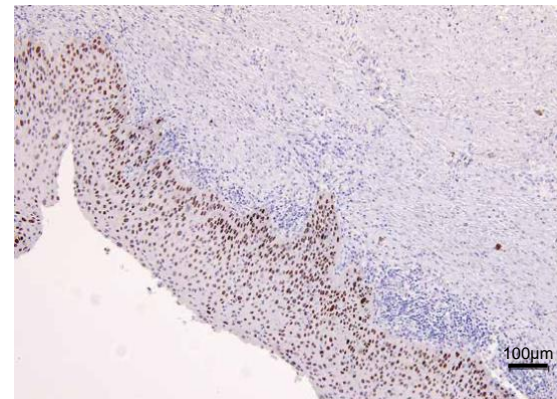
Spatial genomic diversity associated with APOBEC mutagenesis in squamous cell carcinoma arising from ovarian teratoma

Supplementary Figure 1. Representative images of immunohistochemical staining for p53 in case 1
p53 protein overexpression was observed in epithelial components of all samples, but not in stromal components (100X magnification).

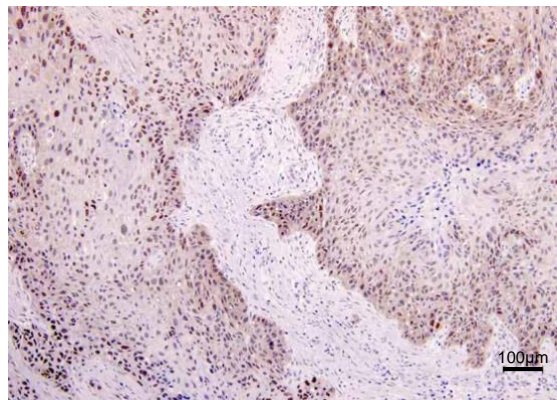
**Non-malignant epithelium
distant from cancer-sites**



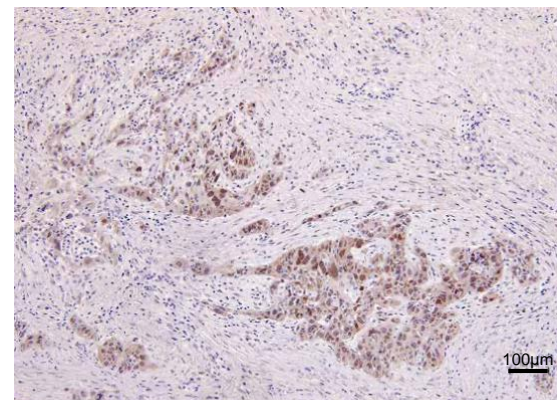
**Non-malignant epithelium
close to cancer-sites**



Keratinizing SCC



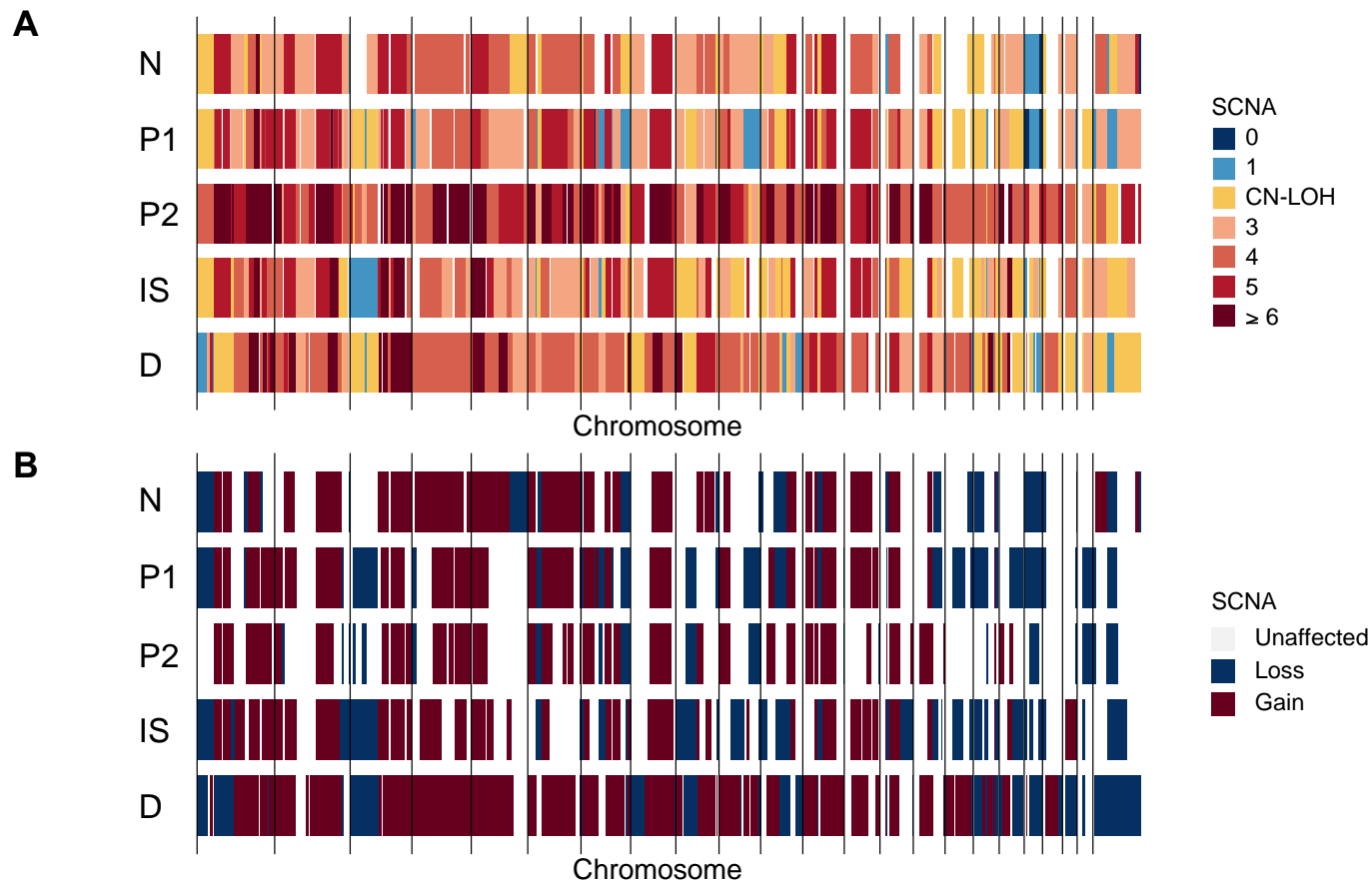
Nonkeratinizing SCC



Supplementary Figure 2. Somatic copy number alterations in case 1

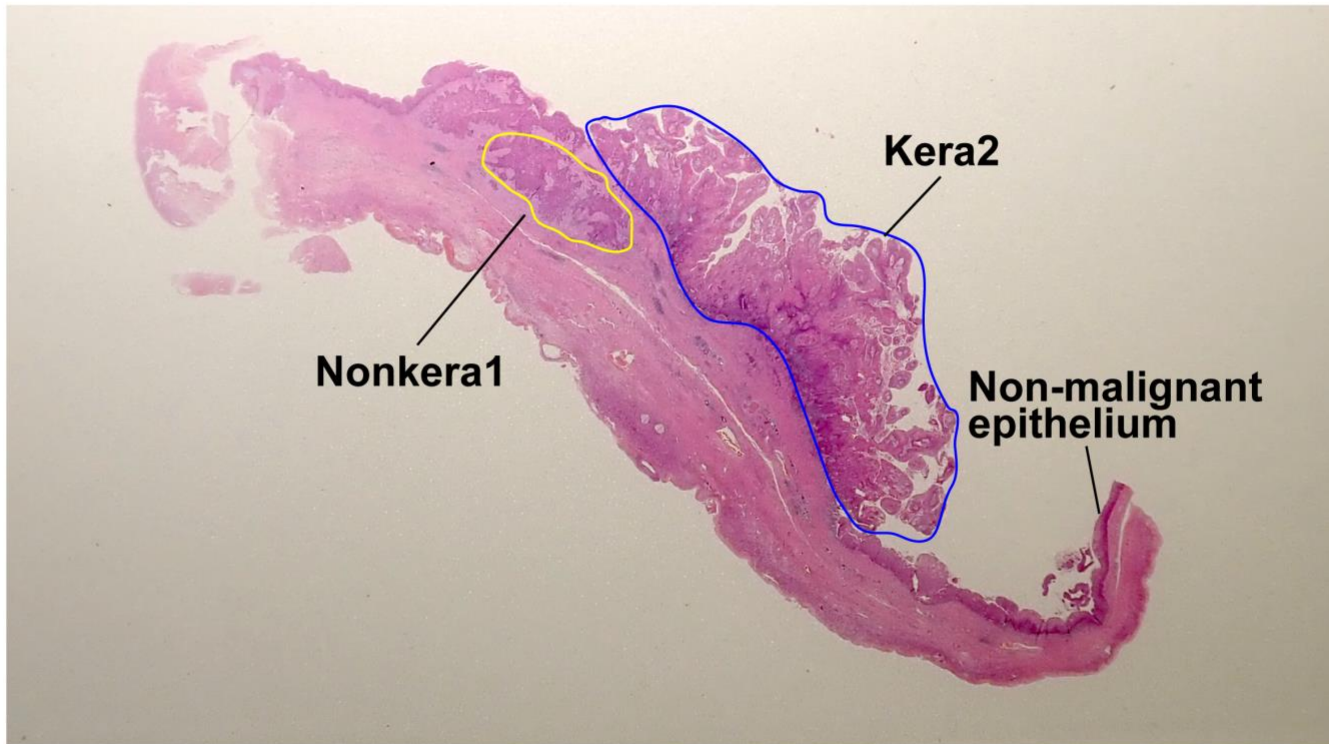
A. Genome-wide profiles of somatic copy number alterations in the five samples. Vertical lines correspond to chromosome numbers.

B. Genome-wide profiles of copy number change relative to ploidy in the five samples. Vertical lines correspond to chromosome numbers.



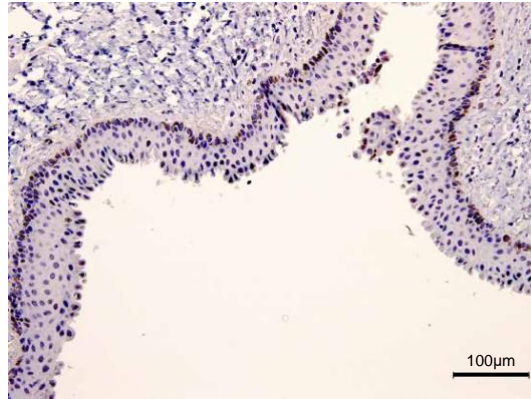
Supplementary Figure 3. A loupe image of Kera2 and Nonkera1

A loupe image of Kera2, Nonkera1 and non-malignant epithelium in the same section is shown. Kera2 and Nonkera1 are outlined solid curves.

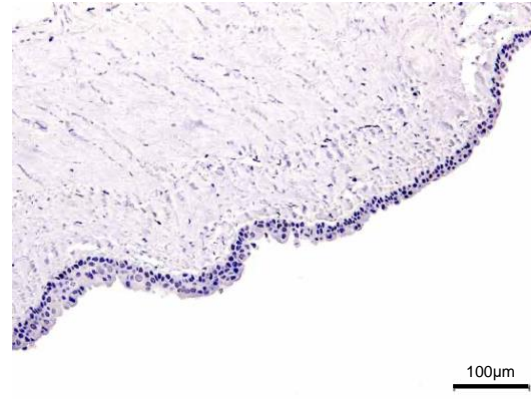


Supplementary Figure 4. Representative images of immunohistochemical staining for p53 in case 2
p53 protein overexpression was observed in nonkeratinizing SCC but not in other components (200X magnification).

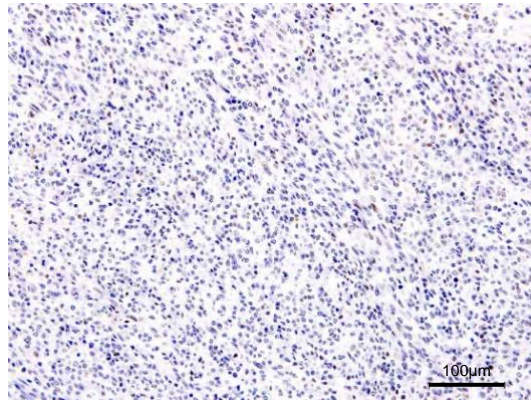
**Non-malignant epithelium
distant from cancer-sites**



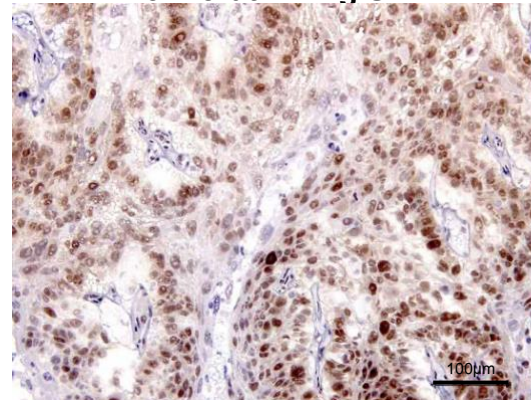
**Non-malignant epithelium
close to cancer-sites**



Anaplastic carcinoma



Nonkeratinizing SCC



Supplementary Figure 5. Somatic copy number alterations in case 2

A. Genome-wide profiles of somatic copy number alterations in the five samples. Vertical lines correspond to chromosome numbers.

B. Genome-wide profiles of copy number change relative to ploidy in the five samples. Vertical lines correspond to chromosome numbers.

