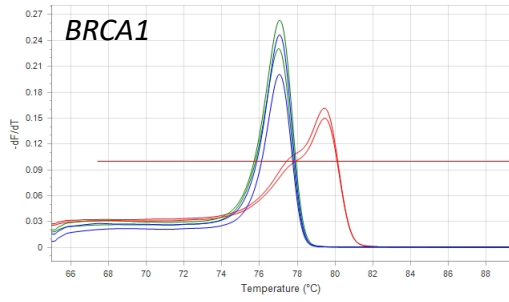
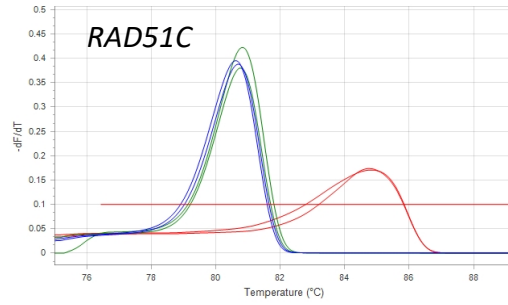
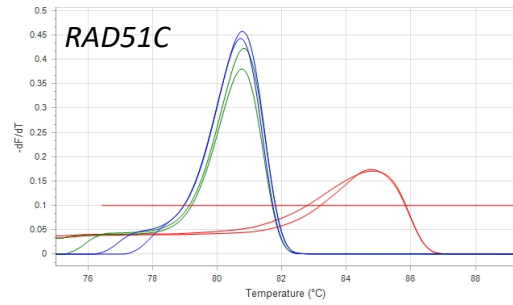
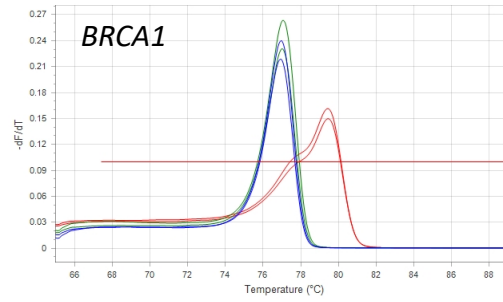


Supplementary Figure 1. (A) Structural variants plot generated from WGS data of uLMS227 primary patient sample showing intra-chromosomal rearrangements. (B) Copy number profile generated from the uLMS227 patient sample. Total copy number is shown in black and minor copy number in red.

uLMS122 patient tumour



uLMS122 PDX



Supplementary Figure 2. Methylation analysis of the *BRCA1* and *RAD51C* promoters. Red lines indicate a 100% methylated control, blue lines indicated 0% methylated control and the green line represents the uLMS122 sample (both patient and PDX sample).