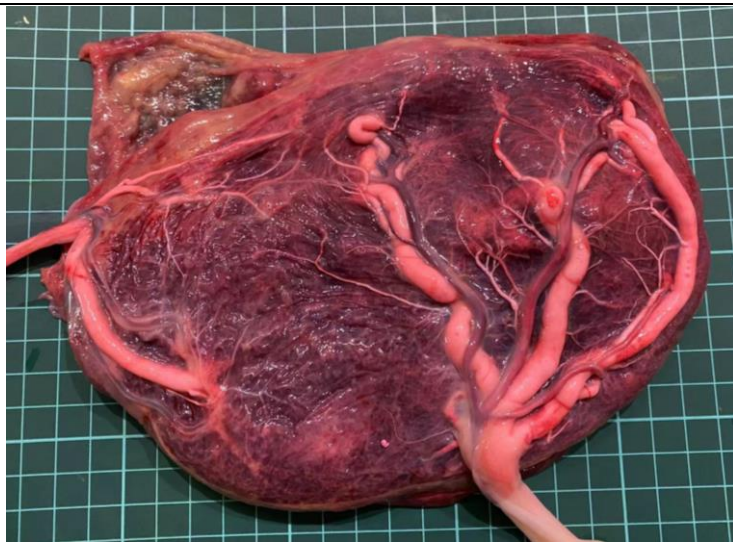


1 **Supplementary Files:** Stained monochorionic diamniotic placentas with large territory discordance in our  
2 hospital from Dec.2021 to Aug. 2022.

3



Case 1#  
Cord insertion: normal/velamentous  
Placental territory discordance ratio:76.5%  
Complication: SFGR (type □)  
GA at delivery: 33+1GW  
Twin birth weight: 2060/1390g  
Birth weight discordance ratio: 32.5%



Case 2#  
Cord insertion: marginal/marginal  
Placental territory discordance ratio:52.5%  
Complication: SFGR (type □)  
GA at delivery: 30+6GW  
Twin birth weight: 1330/670g  
Birth weight discordance ratio: 49.6%



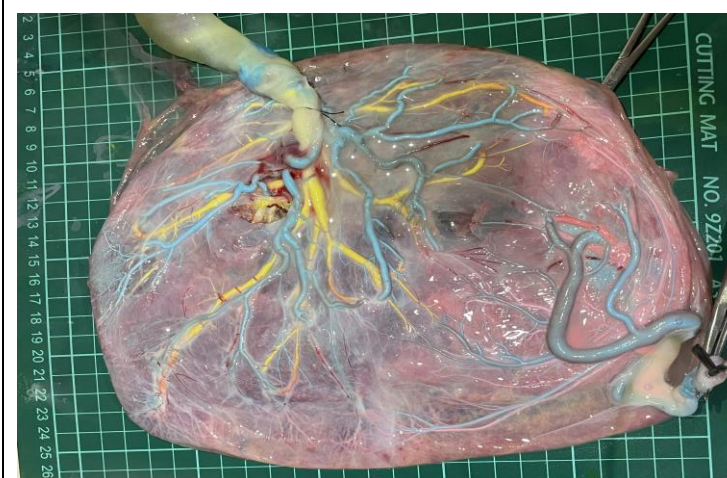
Case 3#  
Cord insertion: normal/marginal  
Placental territory discordance ratio:60.7%  
Complication: SFGR (type □)  
GA at delivery: 32+6GW  
Twin birth weight: 1660/1280g  
Birth weight discordance ratio: 22.9%





Case 4#

Cord insertion: normal/marginal  
 Placental territory discordance ratio: 65.9%  
 Complication: SFGR(type ) , TTTS(stage )  
 GA at delivery: 28+1GW  
 Twin birth weight: 1380/790g  
 Birth weight discordance ratio: 42.8%



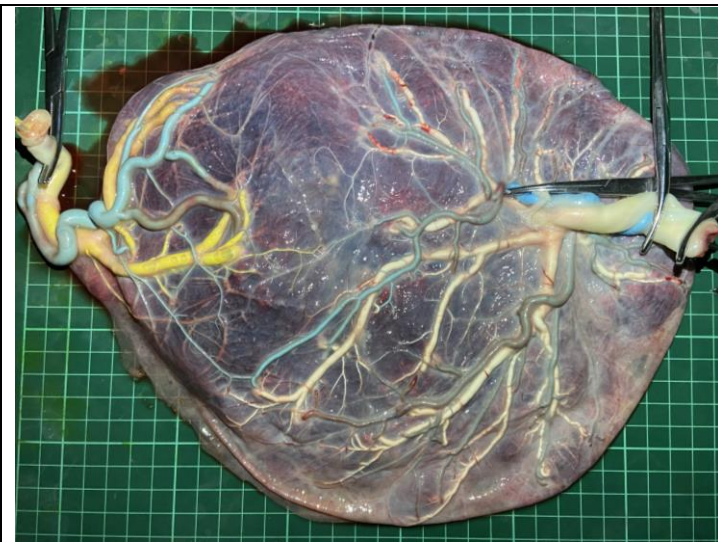
Case 5#

Cord insertion: normal/marginal  
 Placental territory discordance ratio: 50.5%  
 Complication: SFGR (type )  
 GA at delivery: 32+2GW  
 Twin birth weight: 1710/970g  
 Birth weight discordance ratio: 43.3%

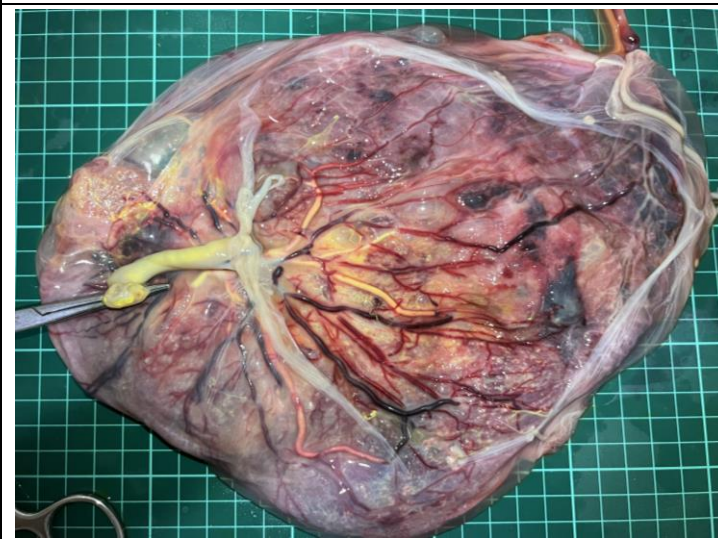


Case 6#

Cord insertion: normal/marginal  
 Placental territory discordance ratio: 69.8%  
 Complication: SFGR (type )  
 GA at delivery: 33+1GW  
 Twin birth weight: 2060/1300g  
 Birth weight discordance ratio: 36.9%



Case 7#  
 Cord insertion: normal/marginal  
 Placental territory discordance ratio: 66.9%  
 Complication: SFGR (type □)  
 GA at delivery: 33+6GW  
 Twin birth weight: 2100/1650g  
 Birth weight discordance ratio: 21.4%



Case 8#  
 Cord insertion: normal/marginal  
 Placental territory discordance ratio: 81.3%  
 Complication: SFGR(type □), TTTS(stage □)  
 GA at delivery: 23+1GW  
 Twin birth weight: 571/349g  
 Birth weight discordance ratio: 38.9%

4 \* GA: gestational age; SFGR: selective fetal growth restriction; TTTS: twin-twin transfusion syndrome.