

Fig S1: T2w-MRI and FDG-PET

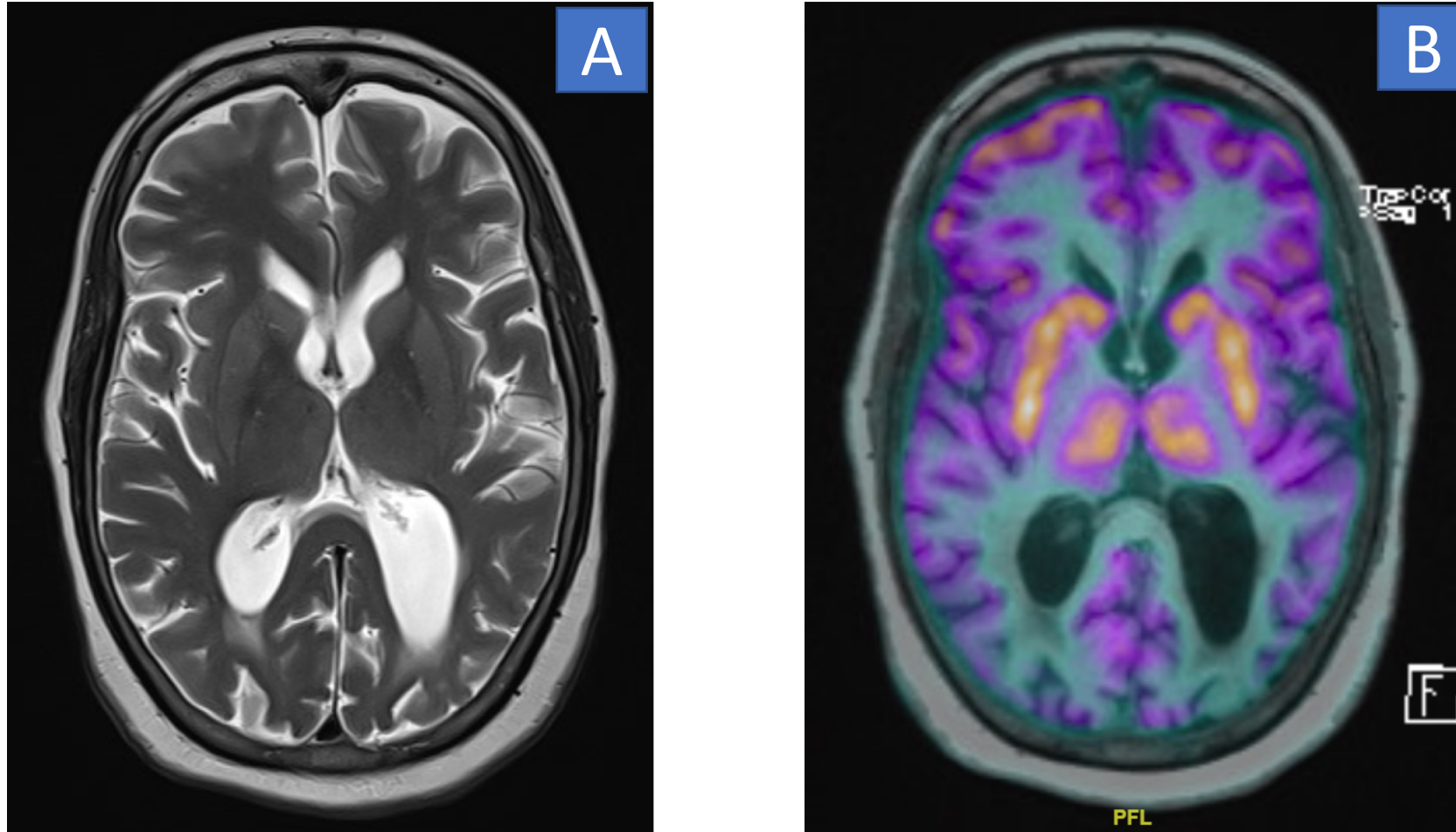


Fig. S1A: Axial T2W images showing dilated lateral ventricles with out of proportion enlargement of the bilateral occipital horns. Bilateral occipital WM paucity noted.

Fig. S1B: Axial FDG PET image shows marked reduction in the bilateral parietal-occipital metabolism with relative sparing of the posterior cingulate medial occipital cortex.

Fig S2: SCENIUM processed Axial and SSP images of FDG PET

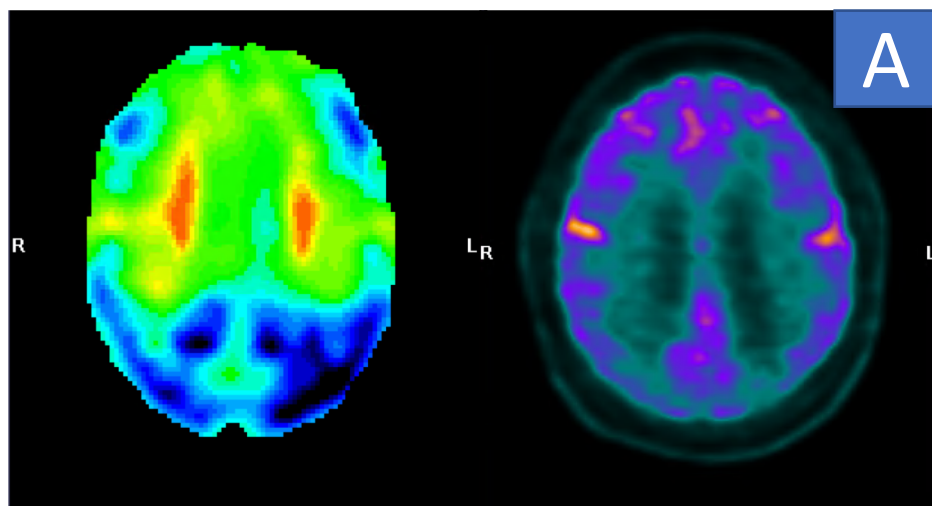


Fig. S2A: SCENIUM processed image corresponding to Axial F18 FDG PET images showing Cingulate Island Sign.

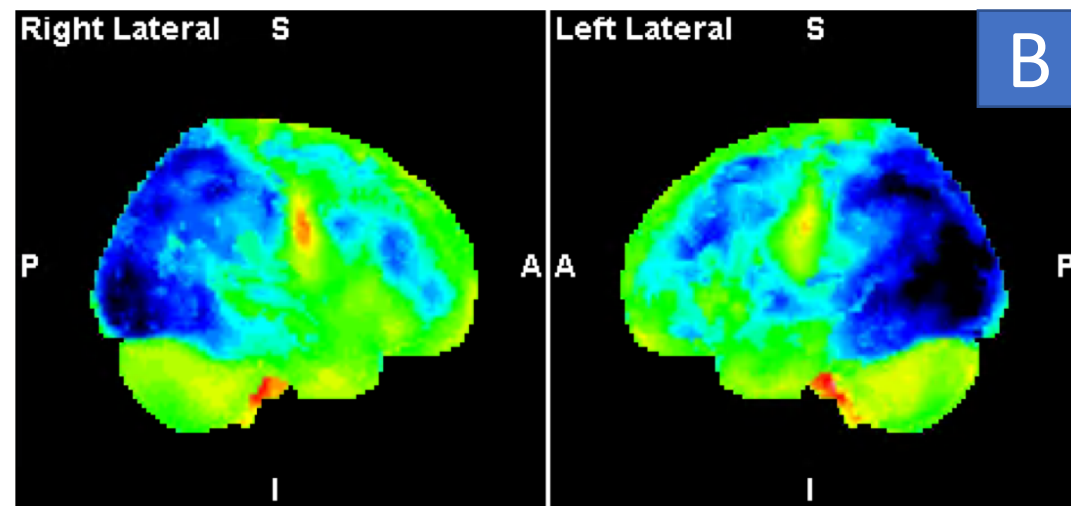


Fig. S2B: SCENIUM processed Stereotactic surface projection (SSP) image of FDG PET shows marked hypometabolism in the bilateral parietal-occipital metabolism with preserved metabolism in posterior cingulate gyrus, pathognomonic of DLB.