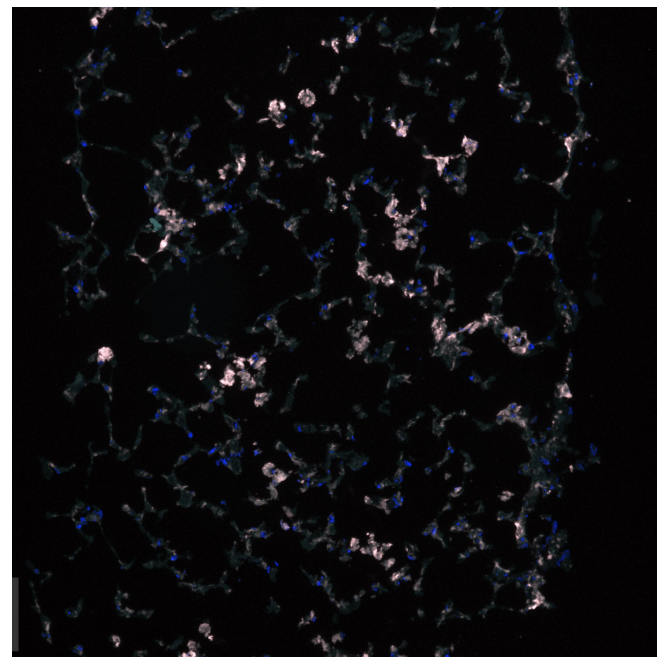
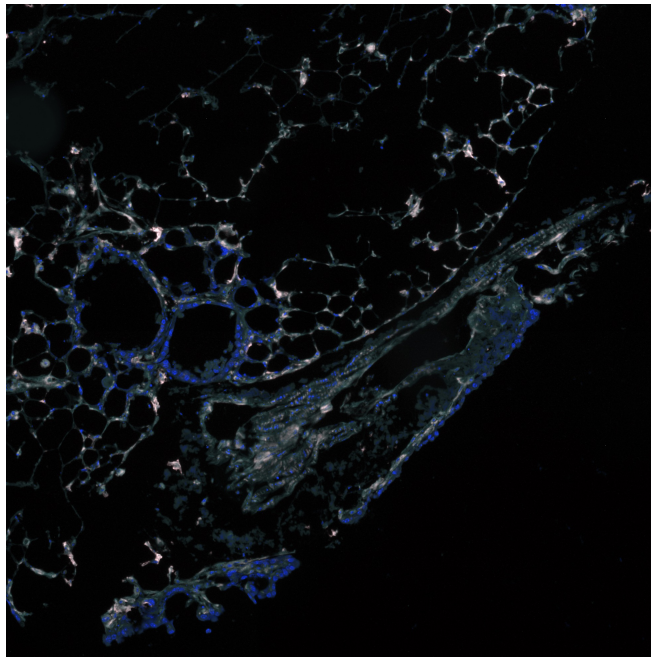
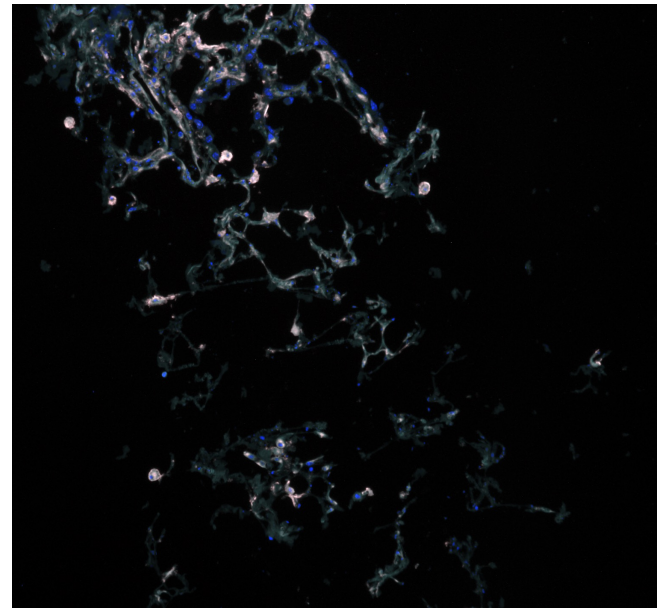
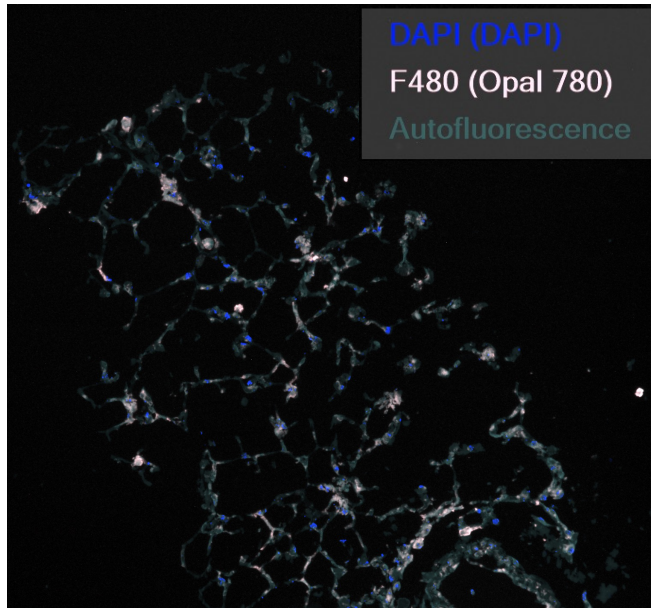


WT

Fzd9^{-/-}

Supplementary Figure S4. Representative images (Supporting Figure 5) from the Vectra Polaris immunofluorescence assay that identified cells in WT and *Fzd9*^{-/-} PCLS treated with iloprost (10 μ M) or vehicle for 7 days. Dapi, blue; F4/80, pink. Images collected at 20x. Scale, 1.9 μ m=1mm. WT, wild type; ILO, iloprost.