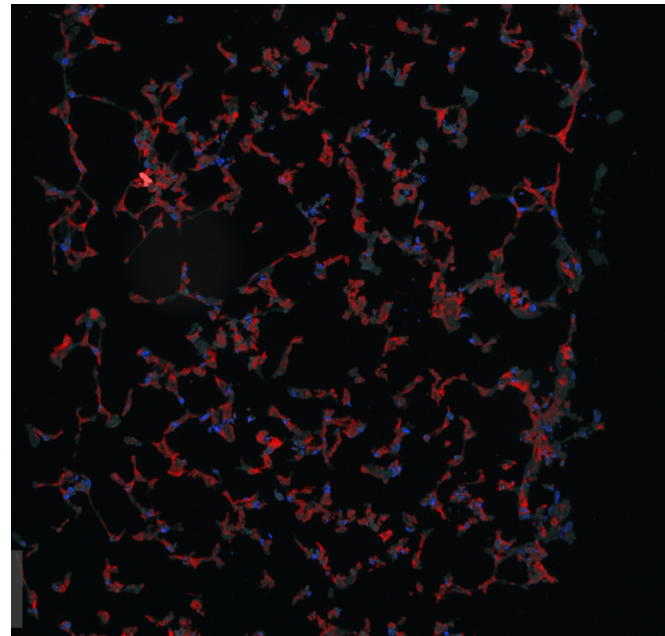
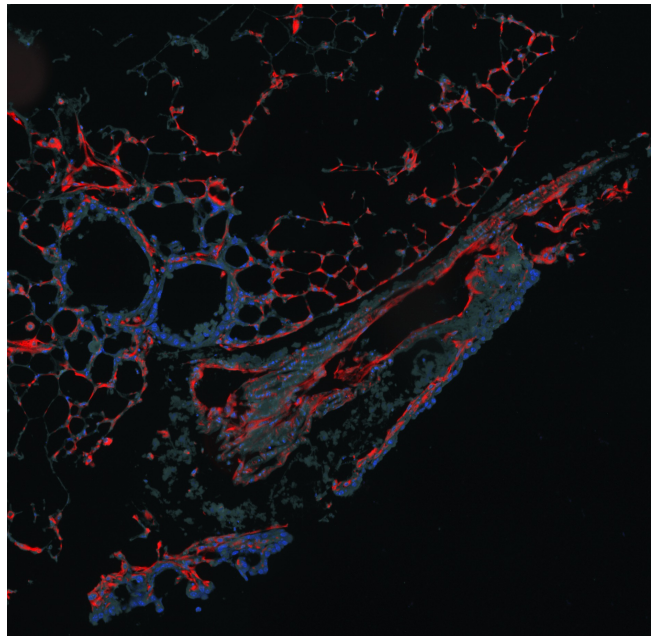
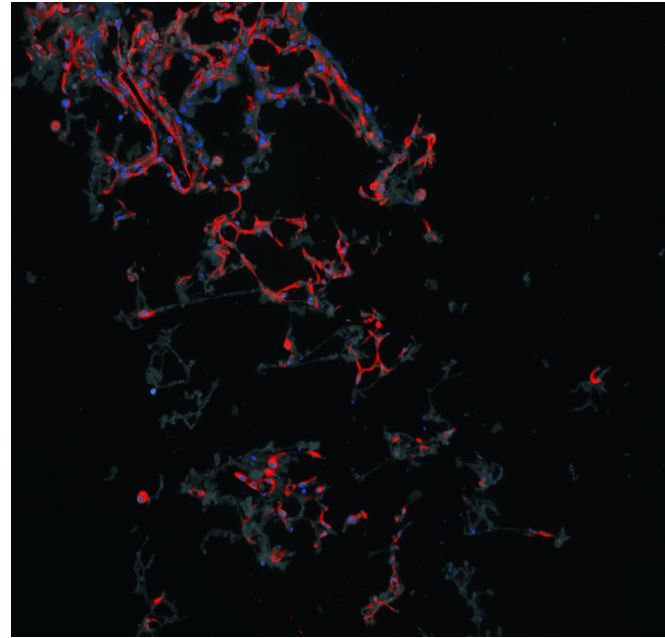
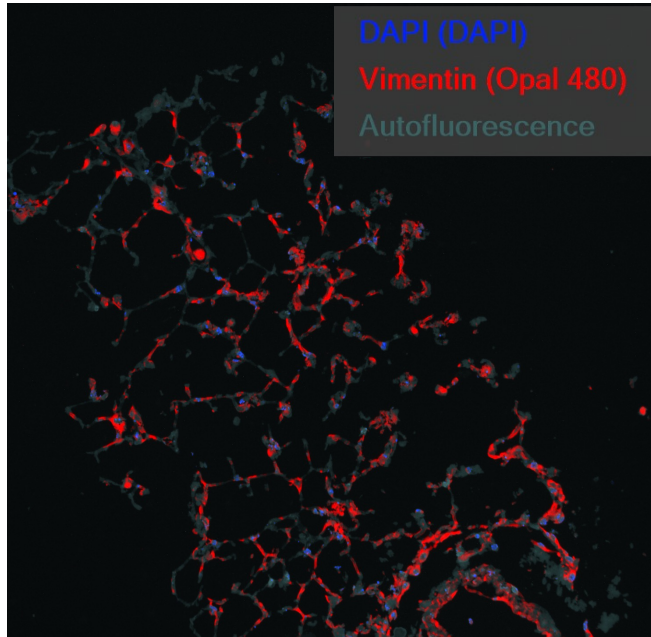


WT

Fzd9<sup>-/-</sup>

**Supplementary Figure S5.** Representative images (supporting Figure 5) from the Vectra Polaris immunofluorescence assay that identified cells in WT and *Fzd9*<sup>-/-</sup> PCLS treated with iloprost (10 $\mu$ M) or vehicle for 7 days. Dapi, blue; Vimentin, red. Images collected at 20x. Scale, 1.9 $\mu$ m=1mm. WT, wild type; ILO, iloprost.