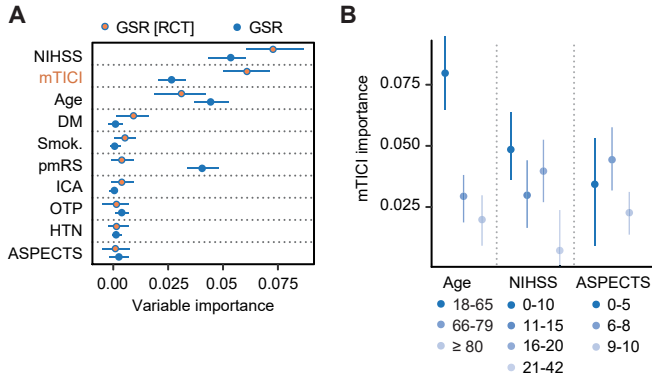


Supplemental Figure 3



mTICI importance for outcome prediction using a generalized linear model. (A) Selecting real-world patients that comply with RCT inclusion criteria increased the importance value of the mTICI score for outcome prediction compared to an unselected real-world cohort (GSR). **(B)** mTICI importance values for outcome prediction were higher in younger patients, with lower NIHSS scores, and low-to-mid ASPECTS when compared to other subgroups of the respective strata. GSR, German Stroke Registry; RCT, randomized controlled trial; mTICI, modified Thrombolysis in Cerebral Infarction; pmRS, premorbid modified Rankin Scale; HTN, hypertension; ICA, internal carotid artery; NIHSS, National Institutes of Health Stroke Scale; ASPECTS, Alberta Stroke Program Early CT Score; DM, diabetes mellitus; Smok., smoking; OTP, onset to puncture time.