

Supplemental Figure S1

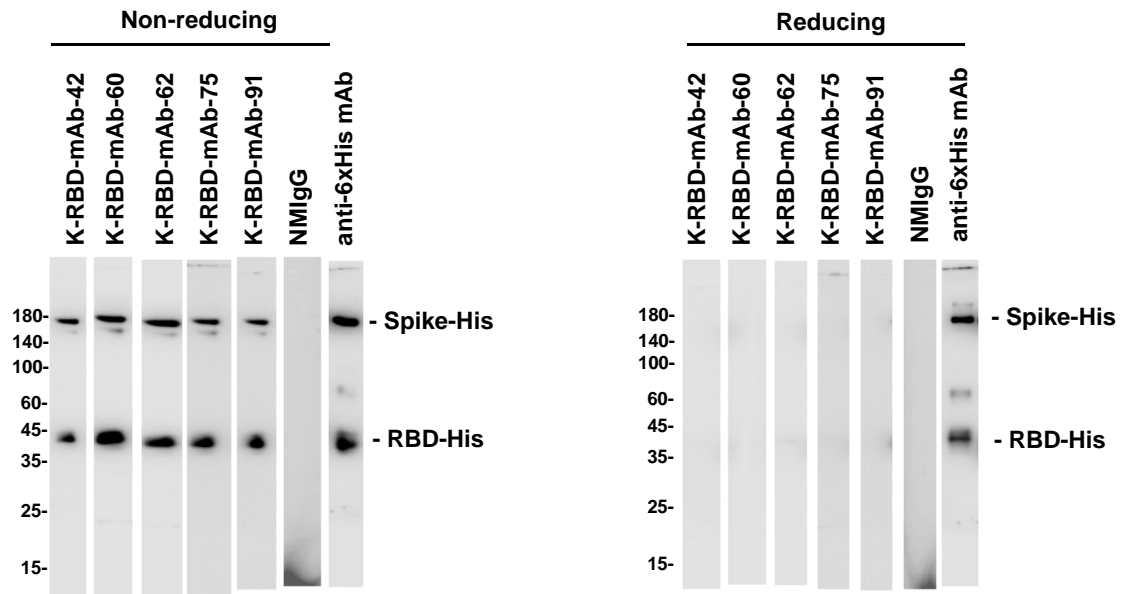


Figure S1. Western blotting Analysis of K-RBD-mAbs to Omicron BA.1 Spike and RBD protein. Five K-RBD-mAbs were used as primary antibodies for Western blotting. Each well was loaded recombinant BA.1 spike protein-His and RBD protein together. Anti-6×His mAb was used as a positive control. This data is supplementary of Figure 1D.