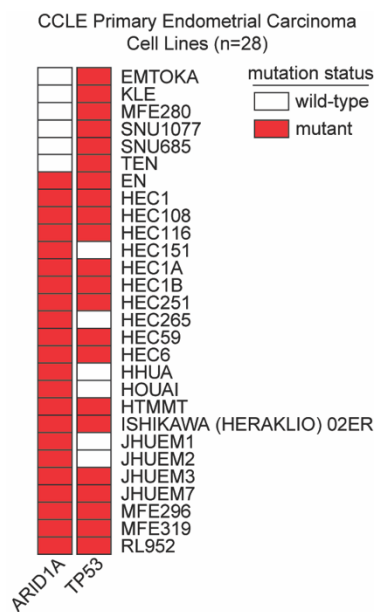


PIK3CA mutation in endometriotic epithelial cells promotes viperin-dependent inflammatory response to insulin

Wilson et al. 2023

Supplemental Figure



Supplemental Figure 1. ARID1A and TP53 mutation profiles of endometrial cancer cell lines.

Mutation data was collected from the Cancer Cell Line Encyclopedia (CCLE) for 28 primary endometrial cancer cell lines. Red indicates a mutation was observed for ARID1A (left column) or TP53 (right column). Cell lines were clustered based on ARID1A mutation status.

Figure 1A

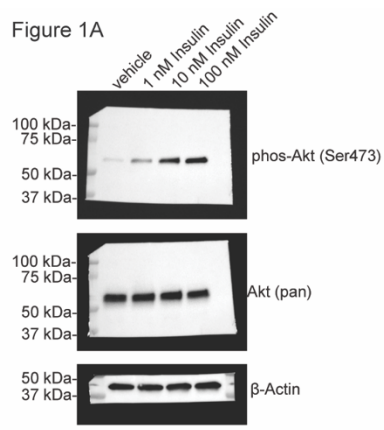


Figure 2A

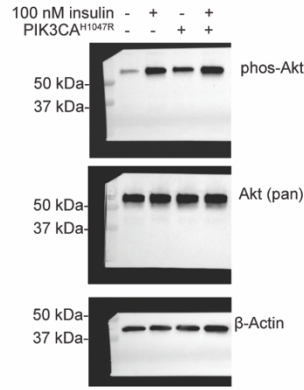


Figure 3B

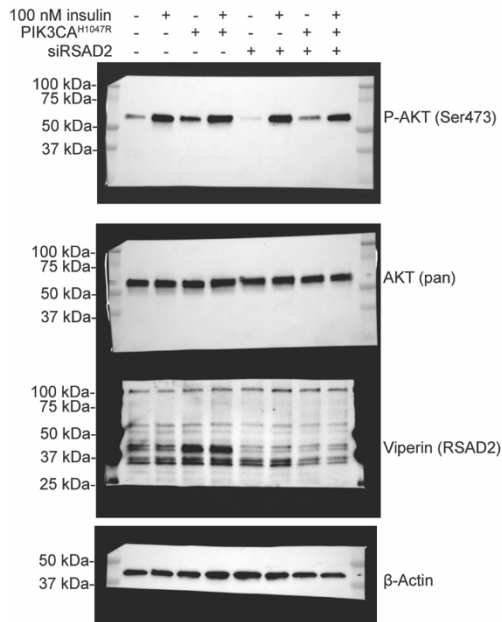
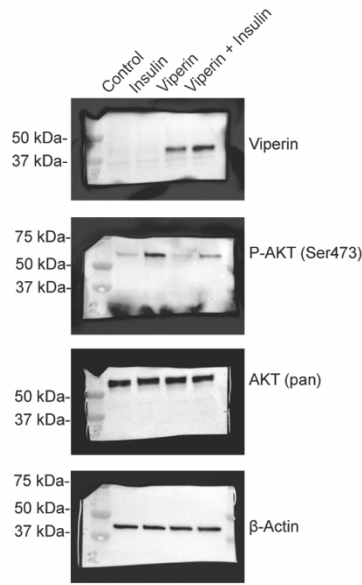


Figure 5A



Supplemental Figure 2. Uncropped western blots.