

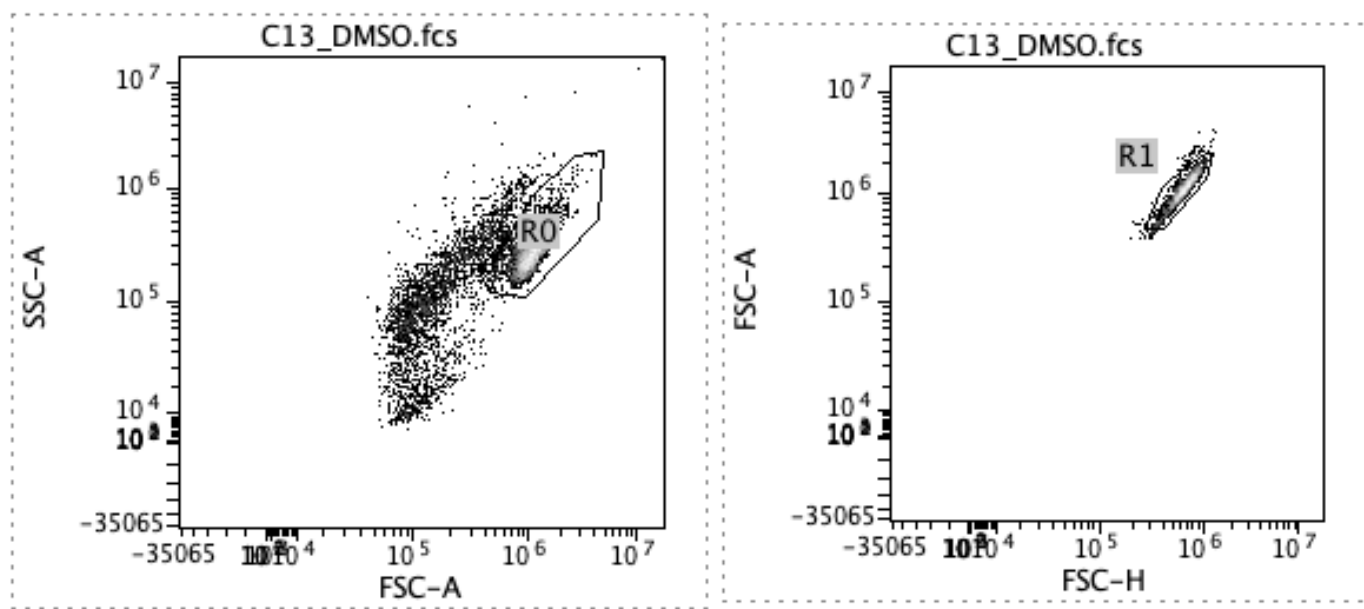


Precise modulation of transcription factor levels identifies features underlying dosage sensitivity

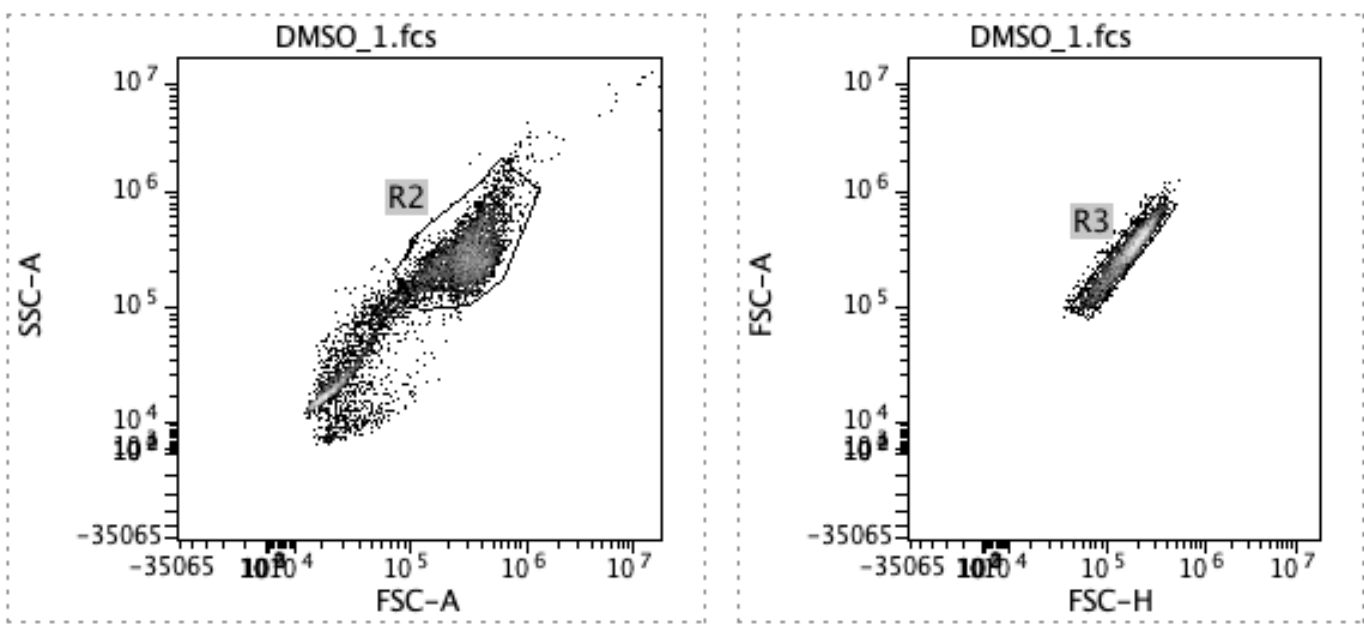
In the format provided by the authors and unedited

A

CNCC gating strategy

**B**

Chondrocyte gating strategy



Supplementary Figure 1. Example gating strategy for viable, single CNCCs (A) or chondrocytes (B) based on forward (FSC) and side (SSC) scatter area (A) and height (H)