

CDDIS-22-3682R

**Clinical-Grade Human Umbilical Cord-Derived
Mesenchymal Stem Cells Improved Skeletal Muscle
Dysfunction in Age-Associated Sarcopenia Mice**

Original Western Blots

- **Note: The representative results of each indicator were listed in the first column.**

Figure 4. hUC-MSCs restrained the decline in the number of muscle satellite cells in SAMP8 mice.

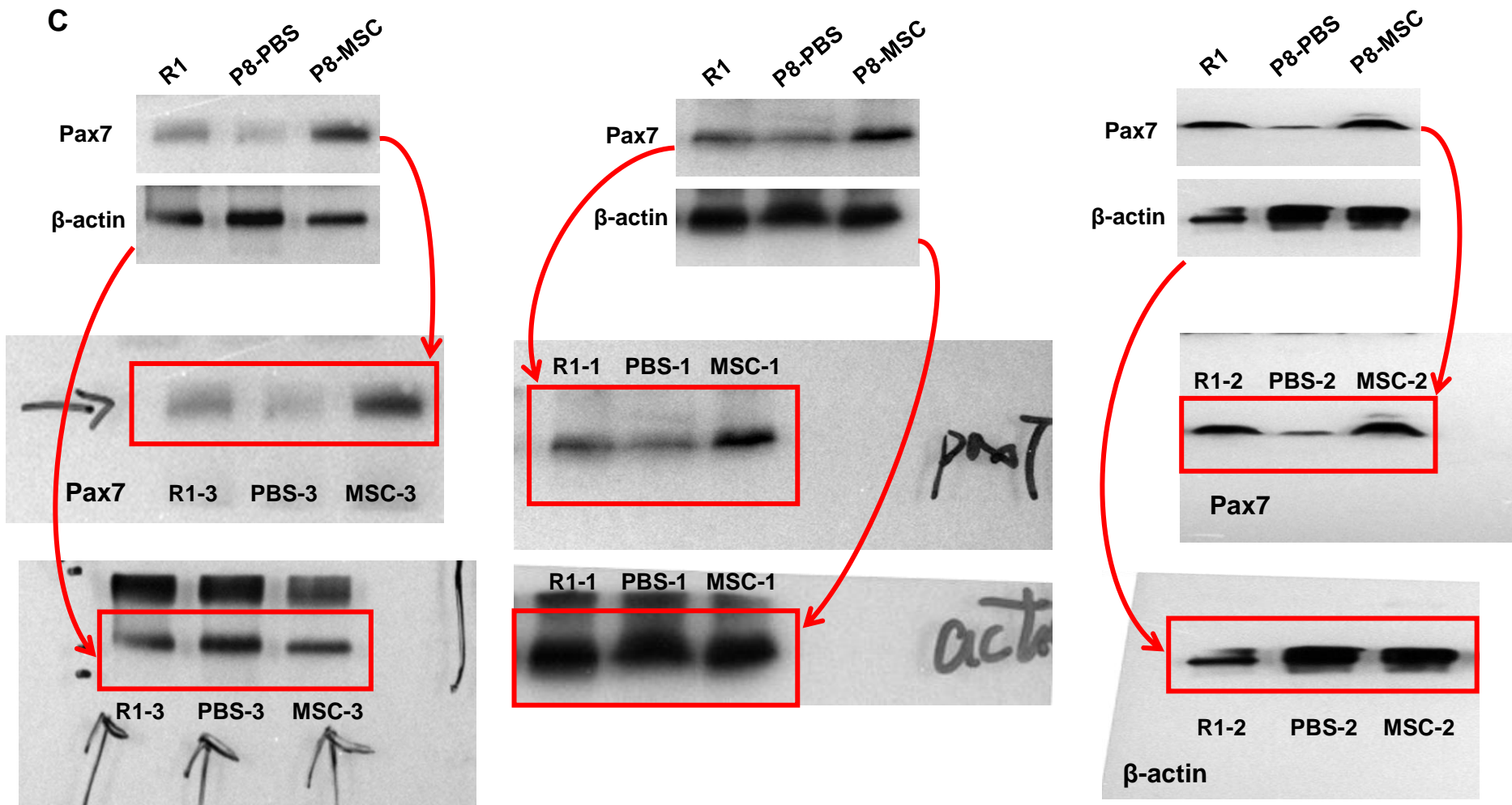


Figure S4. hUC-MSCs modulated the expression of important extracellular matrix proteins in D-gal-induced mice.

C

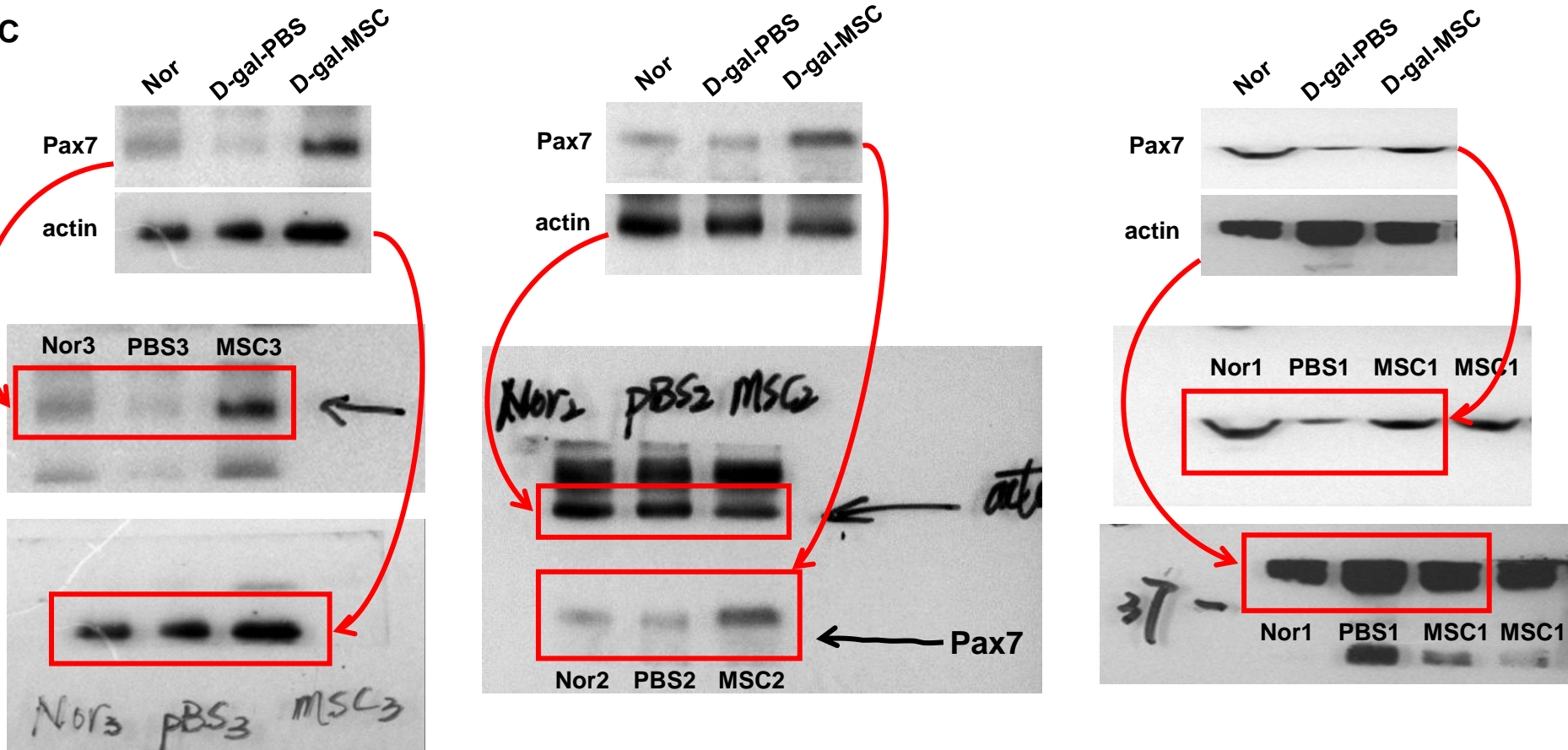


Figure 5. hUC-MSCs increased autophagy and delayed myocyte senescence through p16-Rb / p53-p21 axis in SAMP8 mice.

A

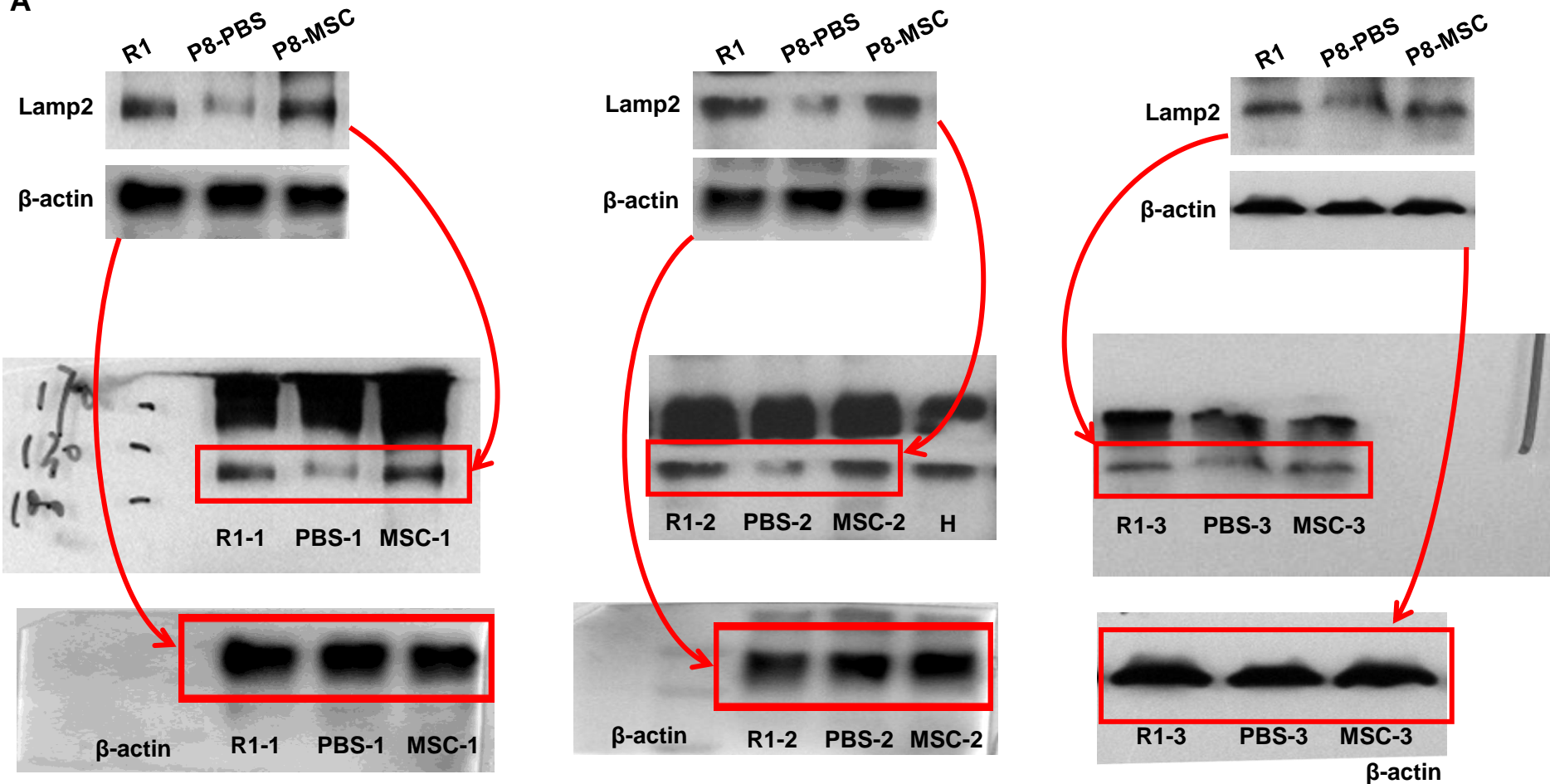


Figure 5. hUC-MSCs increased autophagy and delayed myocyte senescence through p16-Rb / p53-p21 axis in SAMP8 mice.

B

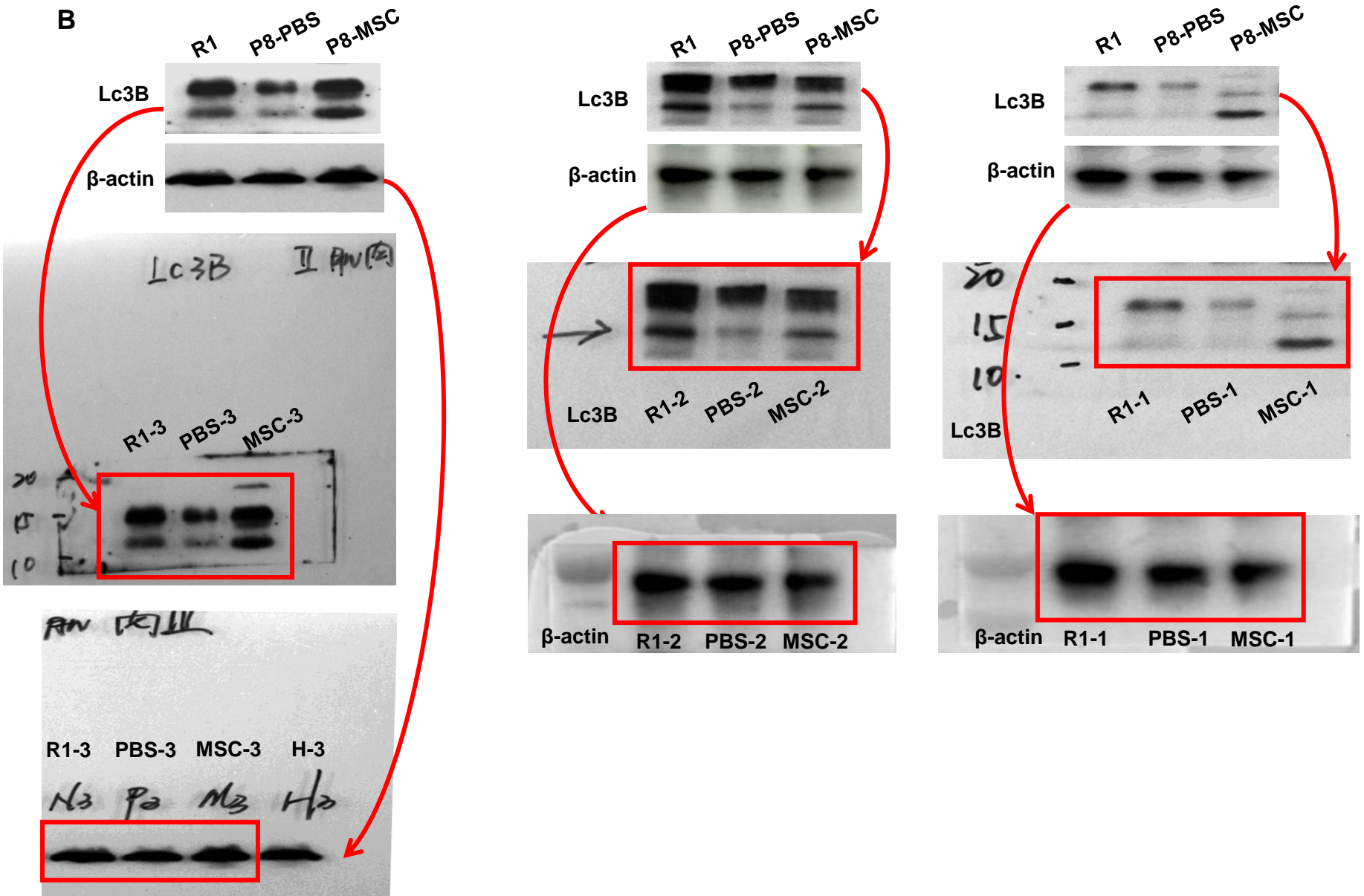


Figure 5. hUC-MSCs increased autophagy and delayed myocyte senescence through p16-Rb / p53-p21 axis in SAMP8 mice.

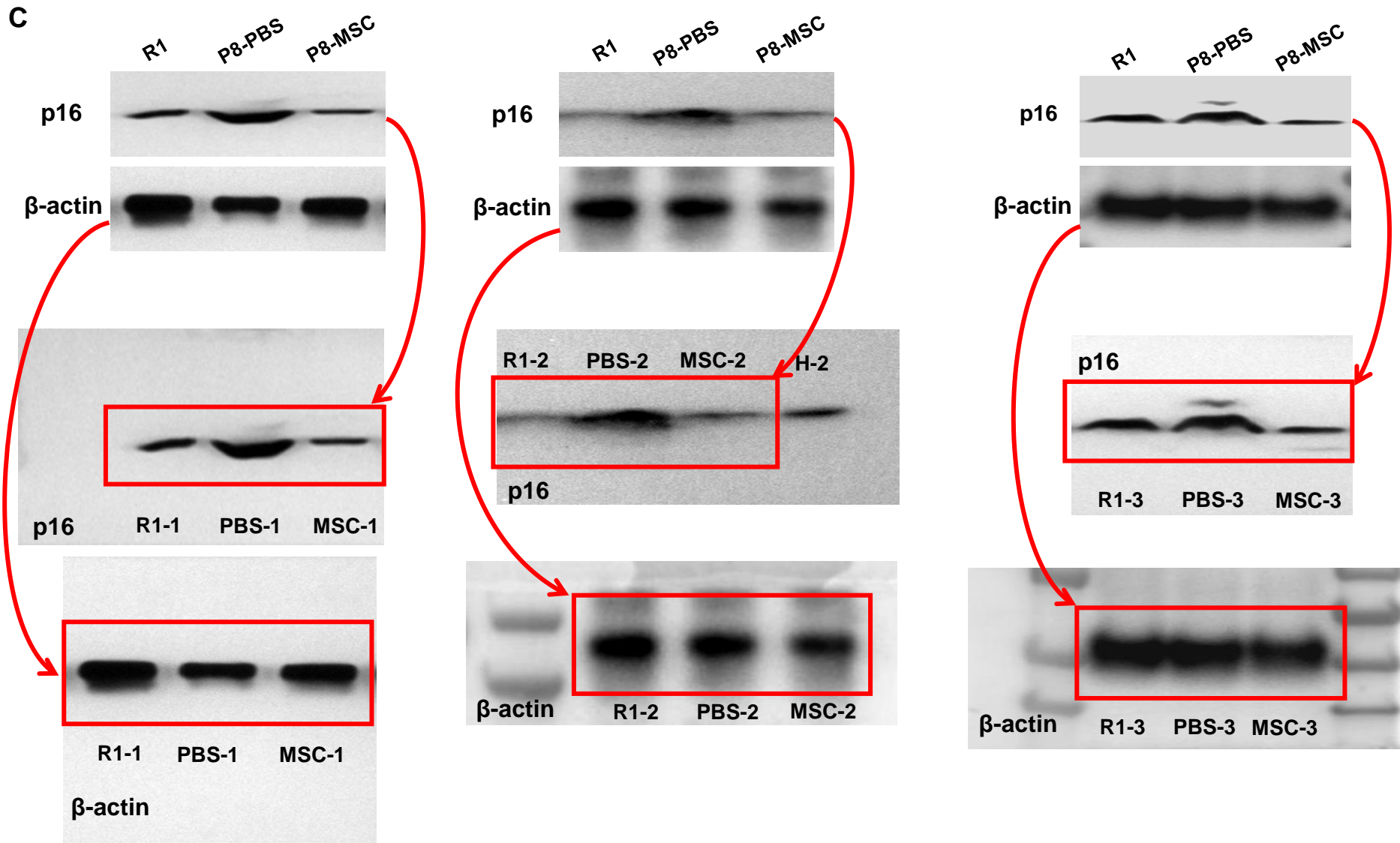


Figure 5. hUC-MSCs increased autophagy and delayed myocyte senescence through p16-Rb / p53-p21 axis in SAMP8 mice.

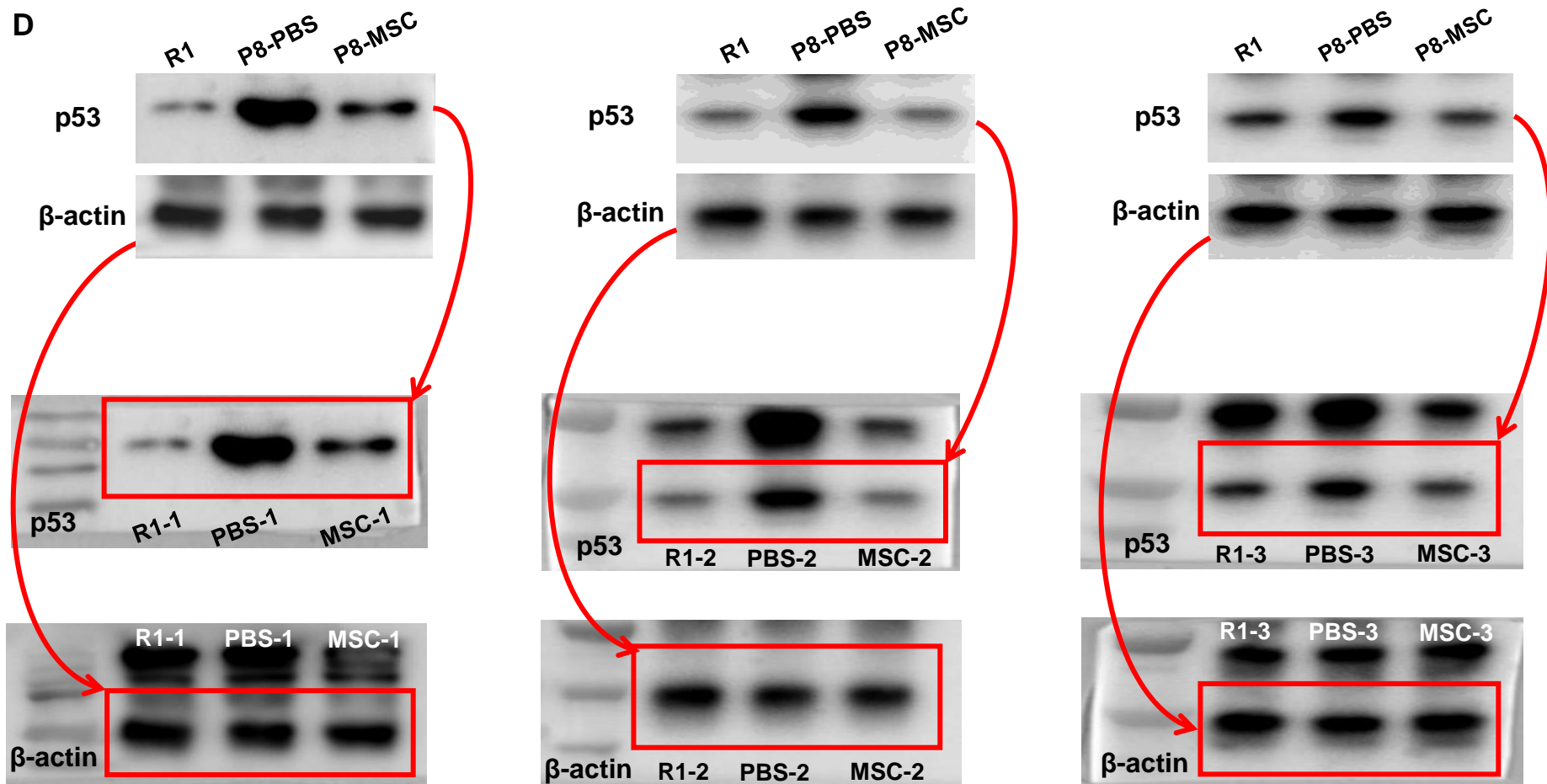


Figure S6. hUC-MSCs increased autophagy and delayed myocyte senescence in D-gal-induced ageing model through p16-Rb / p53-p21 axis.

A

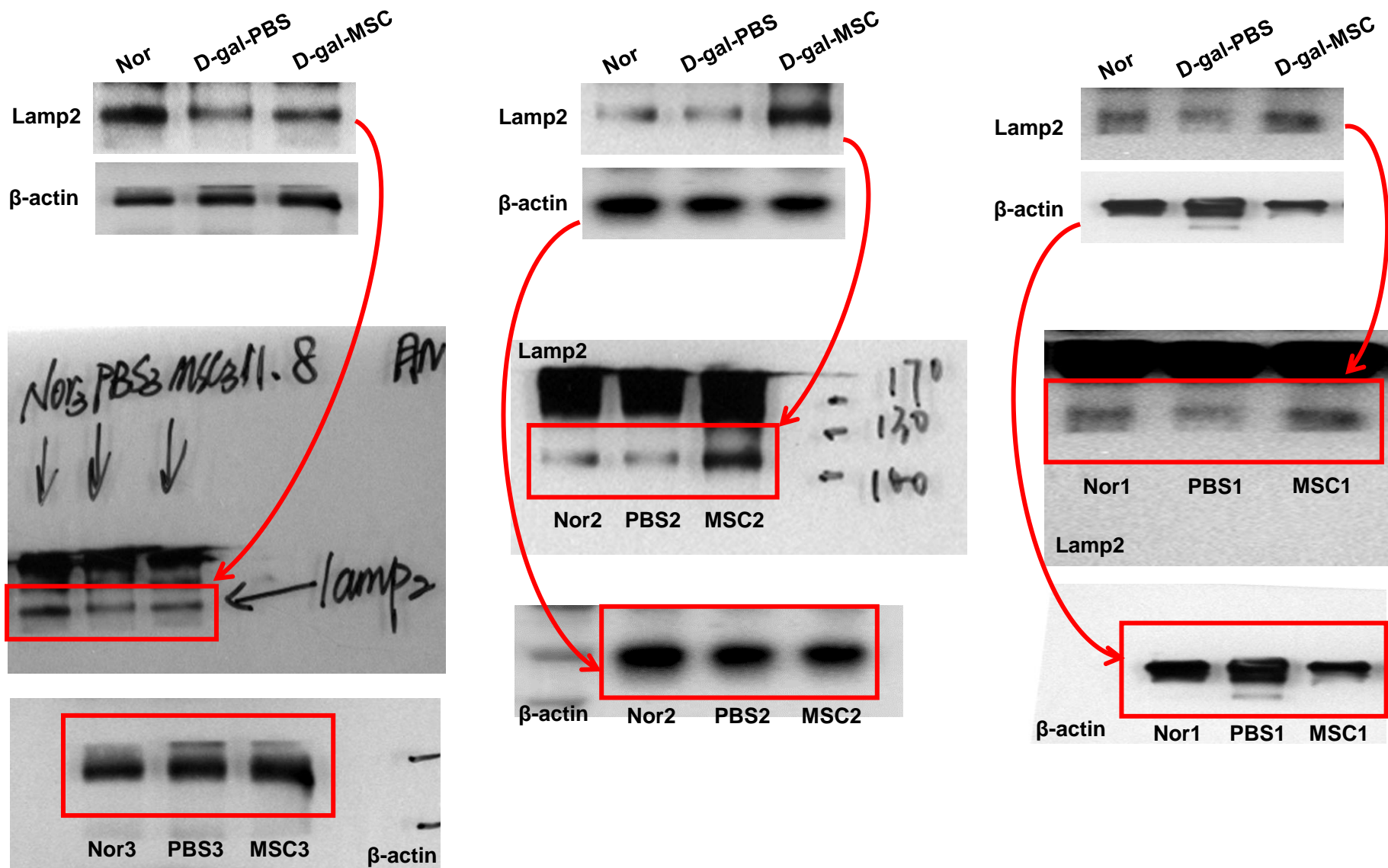


Figure S6. hUC-MSCs increased autophagy and delayed myocyte senescence in D-gal-induced ageing model through p16-Rb / p53-p21 axis.

B

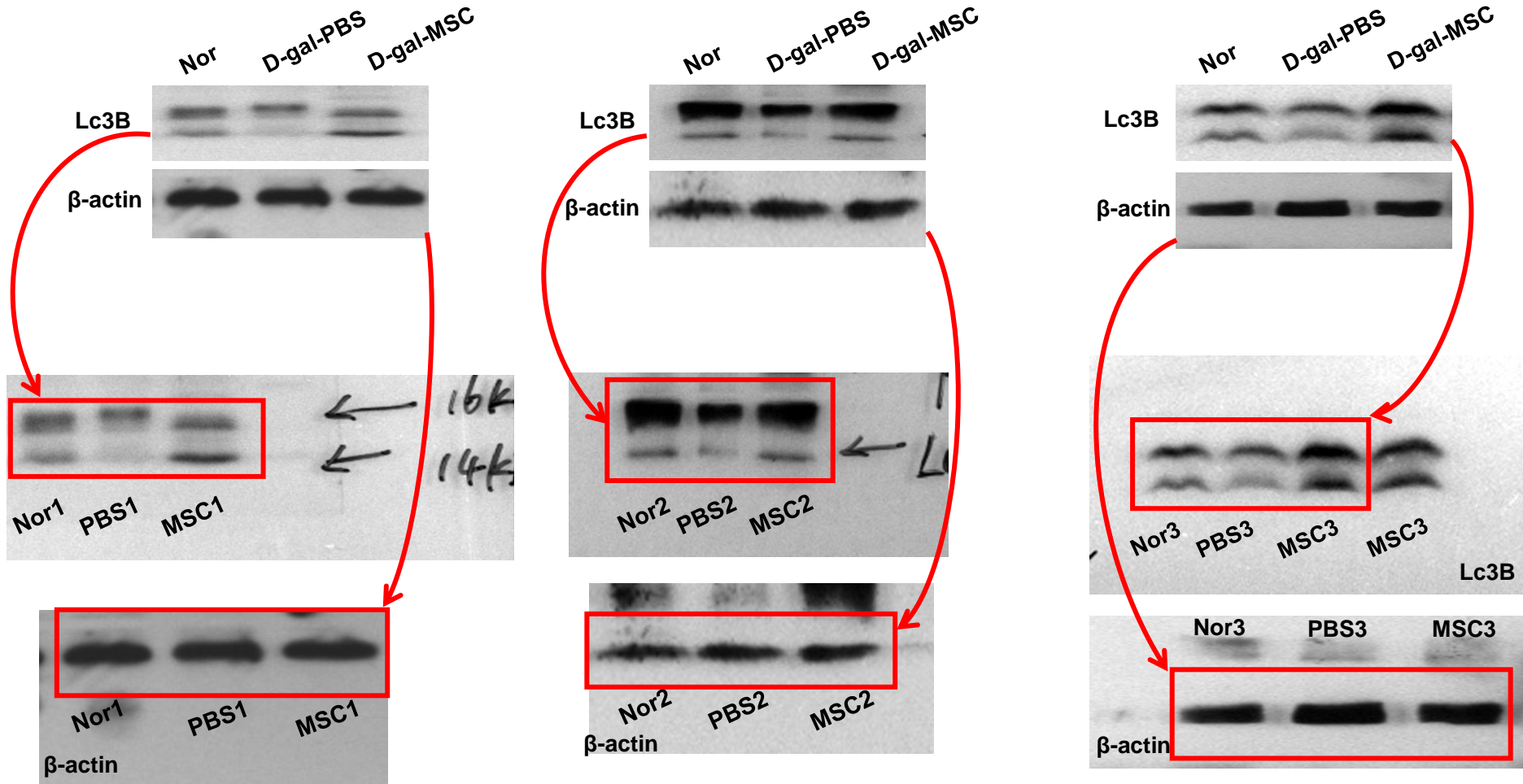


Figure S6. hUC-MSCs increased autophagy and delayed myocyte senescence in D-gal-induced ageing model through p16-Rb / p53-p21 axis.

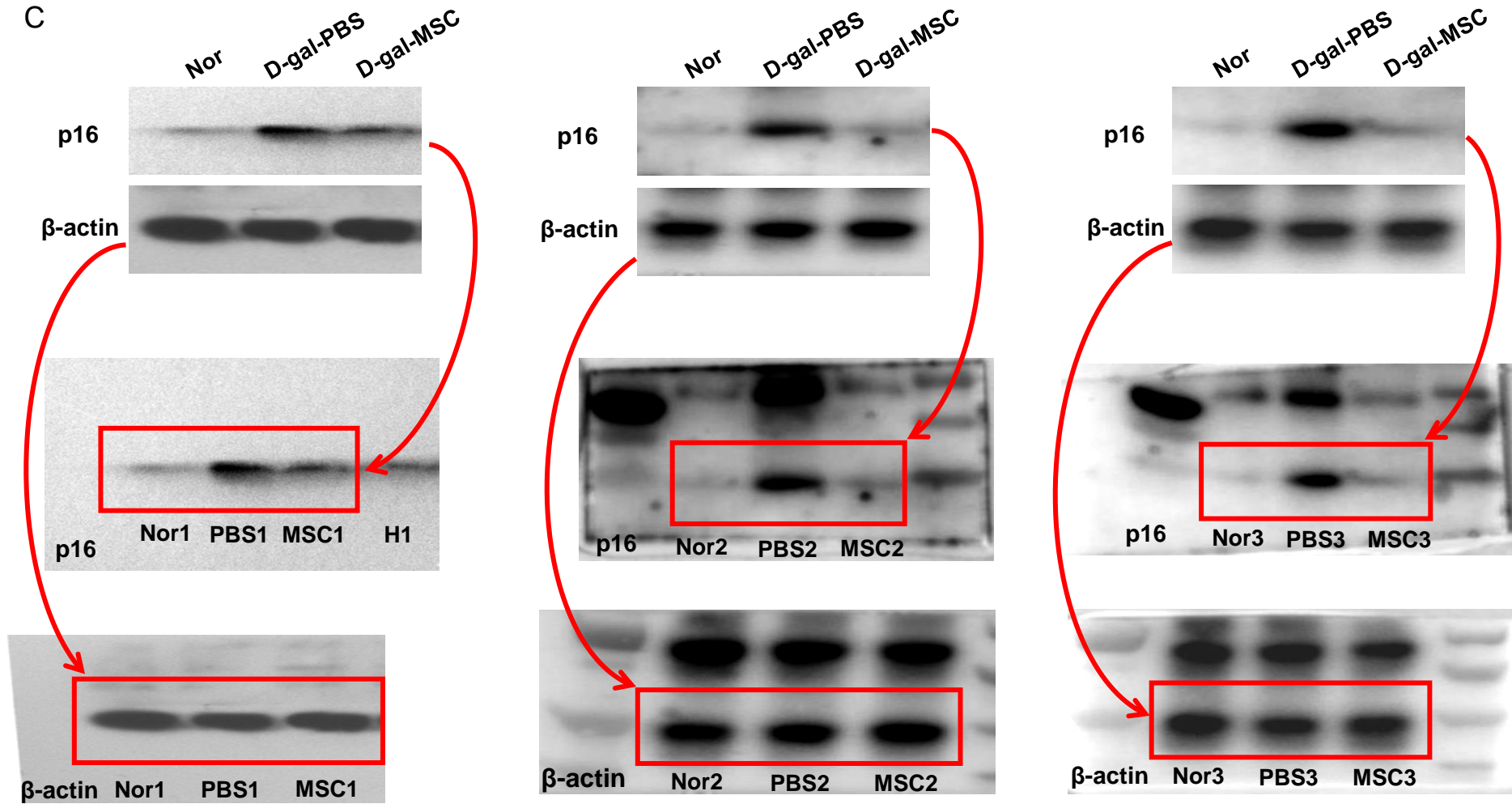


Figure S6. hUC-MSCs increased autophagy and delayed myocyte senescence in D-gal-induced ageing model through p16-Rb / p53-p21 axis.

D

