

Figure S1 Patient flow chart.

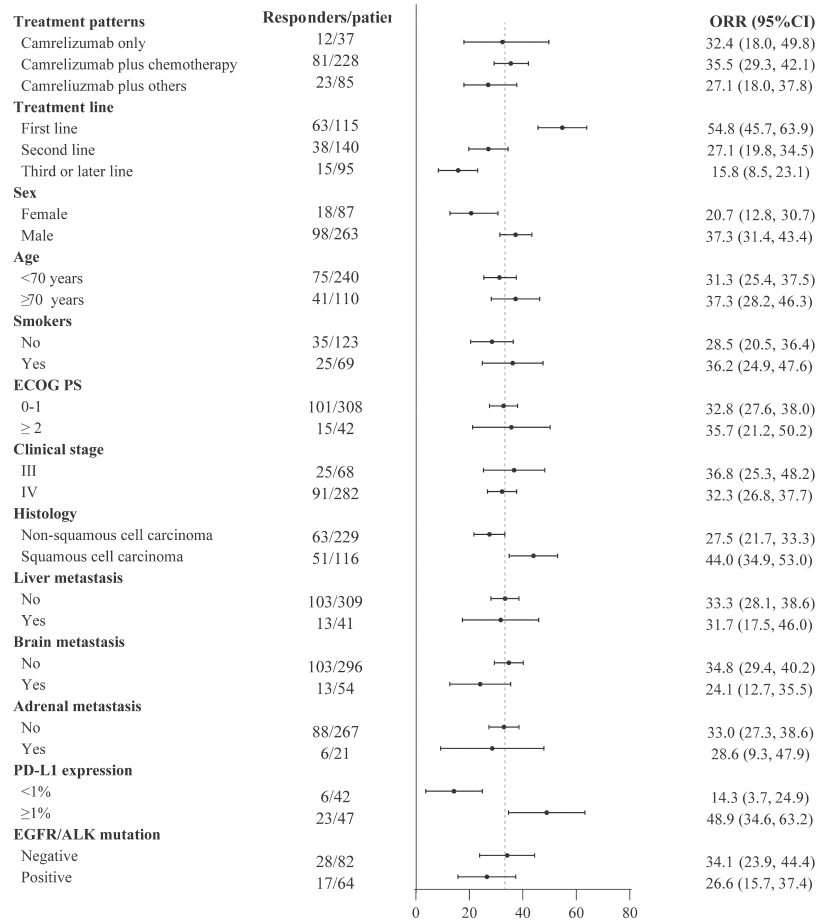


Figure S2 Subgroup analysis of ORR. ORR, overall response rate. CI, confidential interval; ECOG, Eastern Cooperative Oncology Group; PS, performance status; EGFR, epidermal growth factor receptor; ALK, anaplastic lymphoma kinase.

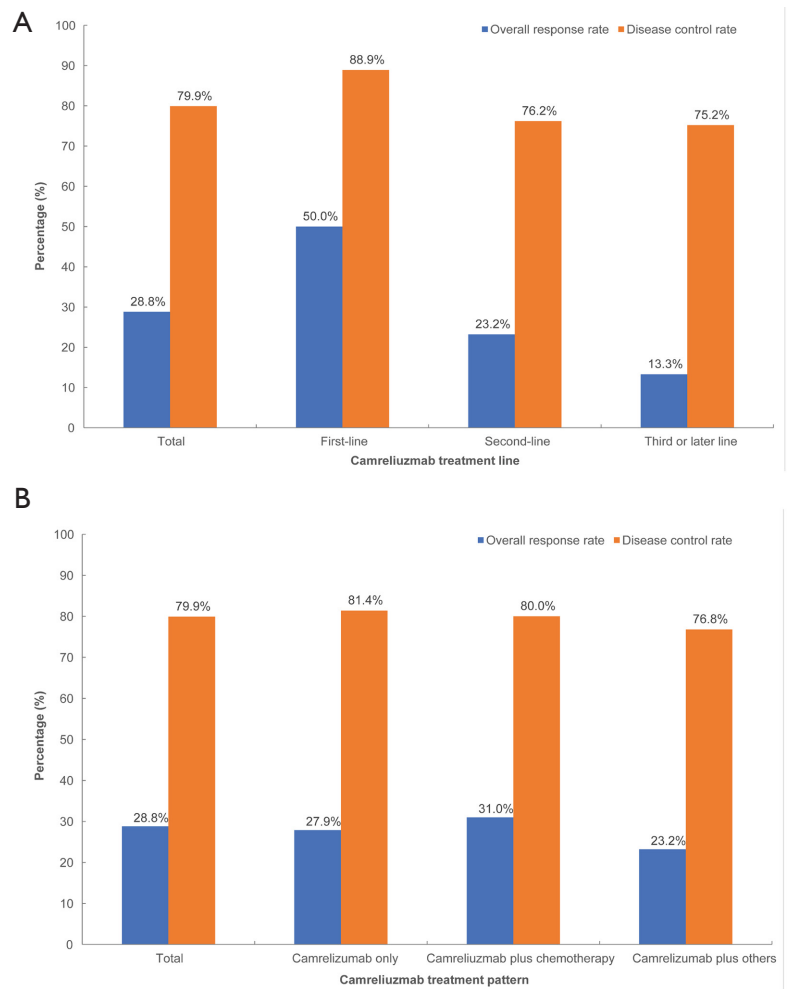


Figure S3 The ORR and DCR analysis with respect to camrelizumab treatment line and treatment patterns. ORR, overall response rate; DCR, disease control rate.

Table S1 Univariate and multivariate COX regression analysis of PFS

Variables	Univariate analysis		Multivariate analysis	
	HR (95%CI)	P	HR (95%CI)	P
Age				
<70 years	Ref.		Ref.	
≥70 years	0.887 (0.641–1.226)	0.466	1.218 (0.862–1.722)	0.264
Sex				
Female	Ref.		Ref.	
Male	1.235 (0.876–1.743)	0.229	0.924 (0.632–1.352)	0.685
Smoking history				
No	Ref.		Ref.	
Yes	0.722 (0.454–1.148)	0.169	0.735 (0.452–1.195)	0.215
ECOG performance status				
0–1	Ref.		Ref.	
≥2	1.004 (0.659–1.531)	0.984	0.898 (0.582–1.384)	0.625
Histology				
Squamous cell carcinoma	Ref.		Ref.	
Non-squamous cell carcinoma	0.959 (0.693–1.328)	0.803	1.005 (0.344–2.936)	0.993
Unspecified	1.321 (0.478–3.649)	0.592	1.152 (0.405–3.267)	0.790
Clinical stage				
III	Ref.		Ref.	
IV	0.661 (0.425–1.029)	0.067	1.489 (0.927–2.391)	0.100
Brain metastatic				
No	Ref.		Ref.	
Yes	1.108 (0.681–1.522)	0.930	0.926 (0.600–1.429)	0.728
Liver metastatic				
No	Ref.		Ref.	
Yes	0.806 (0.514–1.264)	0.348	1.169 (0.733–1.862)	0.512
Adrenal gland metastatic				
No	Ref.		Ref.	
Yes	0.935 (0.475–1.838)	0.845	0.985 (0.487–1.993)	0.966
Treatment line				
First line	Ref		REF.	
Second line	1.168 (0.797–1.711)	0.426	1.189 (0.792–1.786)	0.403
Third or later line	1.375 (0.923–2.048)	0.118	1.328 (0.857–2.058)	0.204
Treatment patterns				
Camrelizumab monotherapy	Ref.		Ref.	
Camrelizumab plus chemotherapy	1.664 (0.915–3.024)	0.095	1.669 (0.899–3.098)	0.105
Camrelizumab plus others*	1.821 (0.961–3.452)	0.066	1.762 (0.903–3.439)	0.097

*, others including anti-angiogenesis therapy or plus chemotherapy, or targeted therapy. PFS, progression-free survival; HR, hazard ratio; CI, confidential interval; REF., reference; ECOG, Eastern Cooperative Oncology Group.

Table S2 Univariate and multivariate COX regression analysis of OS

Variables	Univariate analysis		Multivariate analysis	
	HR (95% CI)	P	HR (95% CI)	P
Age				
<70 years	Ref.		Ref.	
≥70 years	1.072 (0.669–1.719)	0.772	0.908 (0.549–1.502)	0.708
Sex				
Female	Ref.		Ref.	
Male	0.953 (0.570–1.592)	0.854	1.337 (0.767–2.331)	0.306
Smoking history				
No	Ref.		Ref.	
Yes	0.929 (0.504–1.713)	0.814	0.849 (0.448–1.609)	0.615
ECOG performance status				
0–1	Ref.		Ref.	
≥2	0.957 (0.534–1.715)	0.882	0.919 (0.504–1.674)	0.783
Histology				
Squamous cell carcinoma	Ref.		Ref.	
Non-squamous cell carcinoma	0.752 (0.482–1.172)	0.208	0.559 (0.338–0.924)	0.023
Unspecified	0.541 (0.074–3.964)	0.545	0.392 (0.050–3.057)	0.371
Clinical stage				
III	Ref.		Ref.	
IV	0.550 (0.283–1.067)	0.077	1.753 (0.866–3.548)	0.119
Brain metastases				
No	Ref.		Ref.	
Yes	0.871 (0.504–1.506)	0.622	1.152 (0.636–2.089)	0.641
Liver metastases				
No	Ref.		Ref.	
Yes	0.679 (0.368–1.254)	0.217	1.374 (0.730–2.587)	0.325
Adrenal gland metastases				
No	Ref.		Ref.	
Yes	0.530 (0.243–1.155)	0.110	0.798 (0.278–2.294)	0.676
Treatment line				
First line	Ref.		Ref.	
Second line	1.575 (0.879–2.823)	0.127	1.981 (1.072–3.662)	0.029
Third or later line	1.995 (1.102–3.613)	0.023	2.481 (1.285–4.790)	0.007
Treatment pattern				
Camrelizumab monotherapy	Ref.		Ref.	
Camrelizumab plus chemotherapy	1.326 (0.602–2.923)	0.484	1.326 (0.585–3.003)	0.499
Camrelizumab plus others*	1.566 (0.671–3.655)	0.300	1.564 (0.642–3.807)	0.325

*, others including anti-angiogenesis therapy or plus chemotherapy, or targeted therapy. OS, overall survival; HR, hazard ratio; CI, confidential interval; REF., reference; ECOG, Eastern Cooperative Oncology Group.