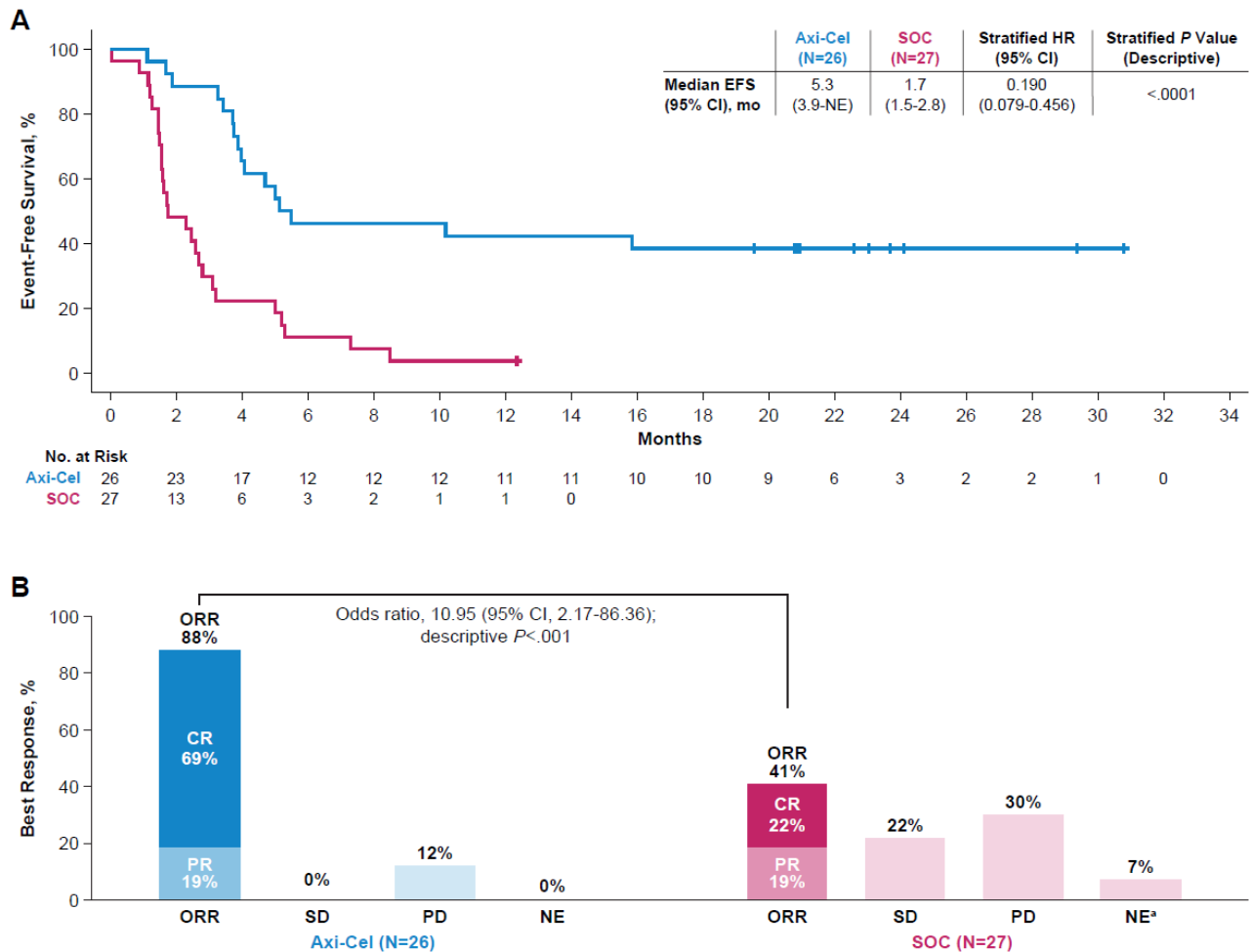


Supplementary Figure S1. Event-free survival per central review and objective response rate in patients ≥70 years



Panel A shows the Kaplan-Meier estimate of EFS by blinded central review in patients ≥70 years. EFS was defined as the time from randomization to the earliest date of disease progression according to the Lugano classification,⁽¹⁾ new lymphoma therapy, death from any cause, or a best response of stable disease up to and including the response on Day 150 assessment after randomization, per blinded central review. Tick marks indicate patients who did not meet the criteria for an event and were censored. Panel B shows summary of best response by blinded central review in patients ≥70 years. ^a In the SOC arm, 2 patients (7%) did not have response assessments completed.

Abbreviations: axi-cel, axicabtagene ciloleucel; EFS, event-free survival; NE, not evaluable; SOC, standard of care.

1. Cheson BD, Fisher RI, Barrington SF, Cavalli F, Schwartz LH, Zucca E, *et al.*

Recommendations for initial evaluation, staging, and response assessment of Hodgkin and non-Hodgkin lymphoma: the Lugano classification. *J Clin Oncol* **2014**;32(27):3059-68.