

**Supplementary Figure S3. Sensitivity analysis of interim overall survival in patients  $\geq 65$  years**

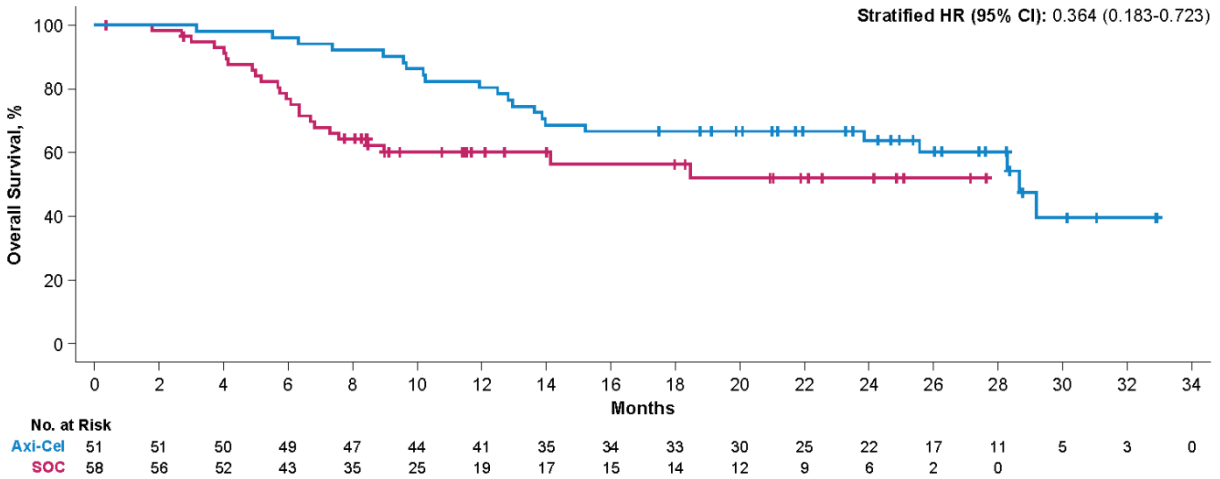


Figure shows the Kaplan-Meier estimate of interim sensitivity OS in patients  $\geq 65$  years. Interim sensitivity analysis was conducted using the rank preserving structure failure time model.(1) Abbreviations: axi-cel, axicabtagene ciloleucel; OS, overall survival; SOC, standard of care.

1. Robins JM, Tsiatis AA. Correcting for non-compliance in randomized trials using rank preserving structural failure time models. *Commun Stat* **1991**;20(8):2609-31.