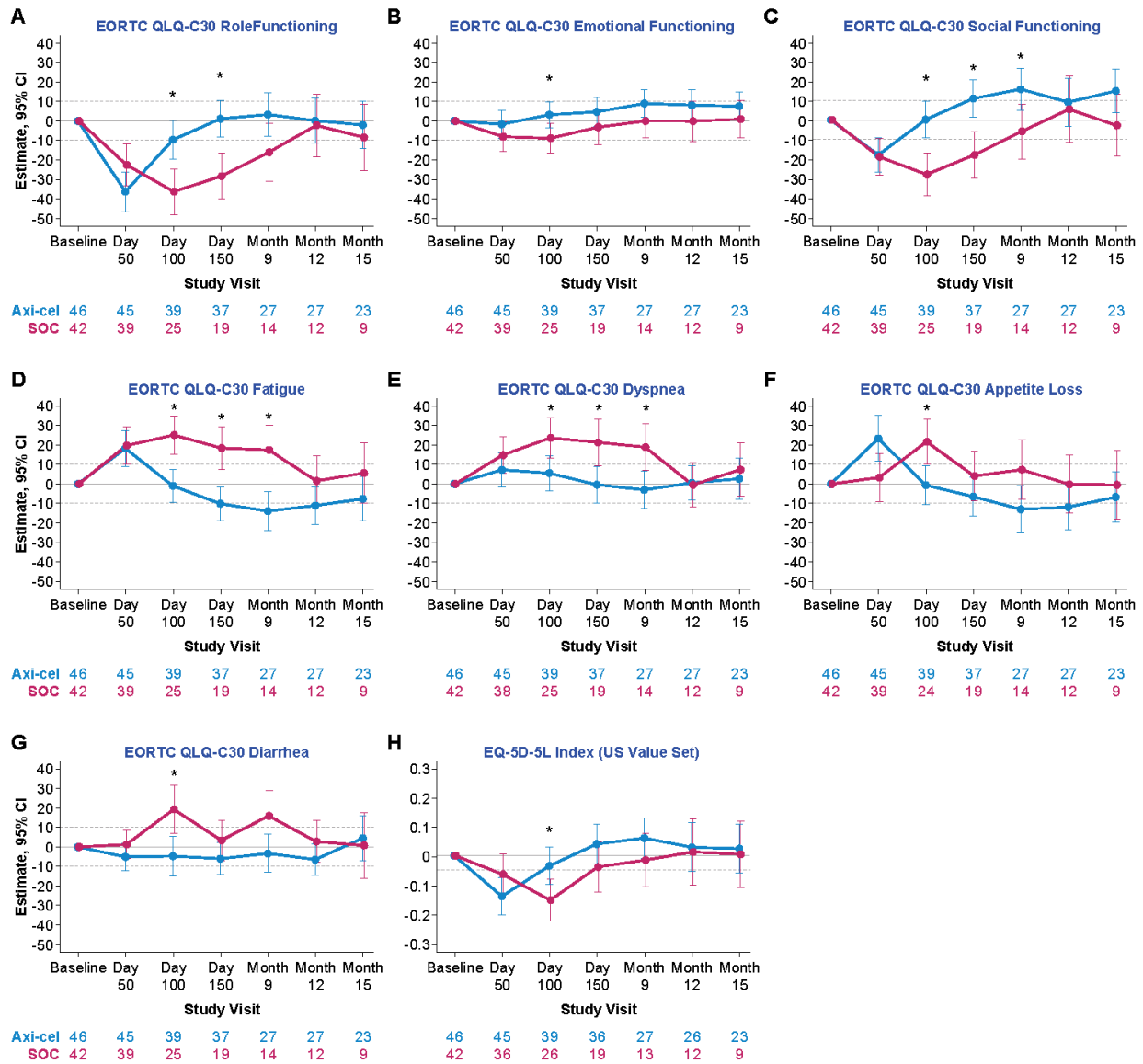


**Supplementary Figure S4. Mixed model with repeated measures for change from baseline for prespecified patient-reported outcomes endpoints in patients ≥65 years**



Figures represent endpoints that were significantly different for change from baseline at Day 100 of axi-cel compared with SOC. Results were populated through Month 15 due to lack of model convergence when using time points. Figures are based on Model 1. Horizontal lines, provided for clarity of interpretation, indicate the minimally important difference thresholds for meaningful change. Mixed model includes variables for treatment, time, and treatment by time interaction (primary analysis) and is controlled for response to 1L therapy and age-adjusted IPI at screening. \* $P < .05$ . Panel A shows the change from baseline of EORTC QLQ-C30 role functioning in patients ≥65 years. Panel B shows the change from baseline of EORTC QLQ-C30 emotional functioning in patients ≥65 years. Panel C shows the change from baseline of

EORTC QLQ-C30 social functioning in patients  $\geq 65$  years. Panel D shows the change from baseline of EORTC QLQ-C30 fatigue in patients  $\geq 65$  years. Panel E shows the change from baseline of EORTC QLQ-C30 dyspnea in patients  $\geq 65$  years. Panel F shows the change from baseline of EORTC QLQ-C30 appetite loss in patients  $\geq 65$  years. Panel G shows the change from baseline of EORTC QLQ-C30 diarrhea in patients  $\geq 65$  years. Panel H shows the change from baseline of EQ-5D-5L Index (US value set) in patients  $\geq 65$  years.

Abbreviations: axi-cel, axicabtagene ciloleucel; CI, confidence interval; EORTC, European Organization for Research and Treatment of Cancer; QLQ-C30, Quality of Life Questionnaire-Core 30; QoL, quality of life; SOC, standard of care; VAS, visual analogue scale.