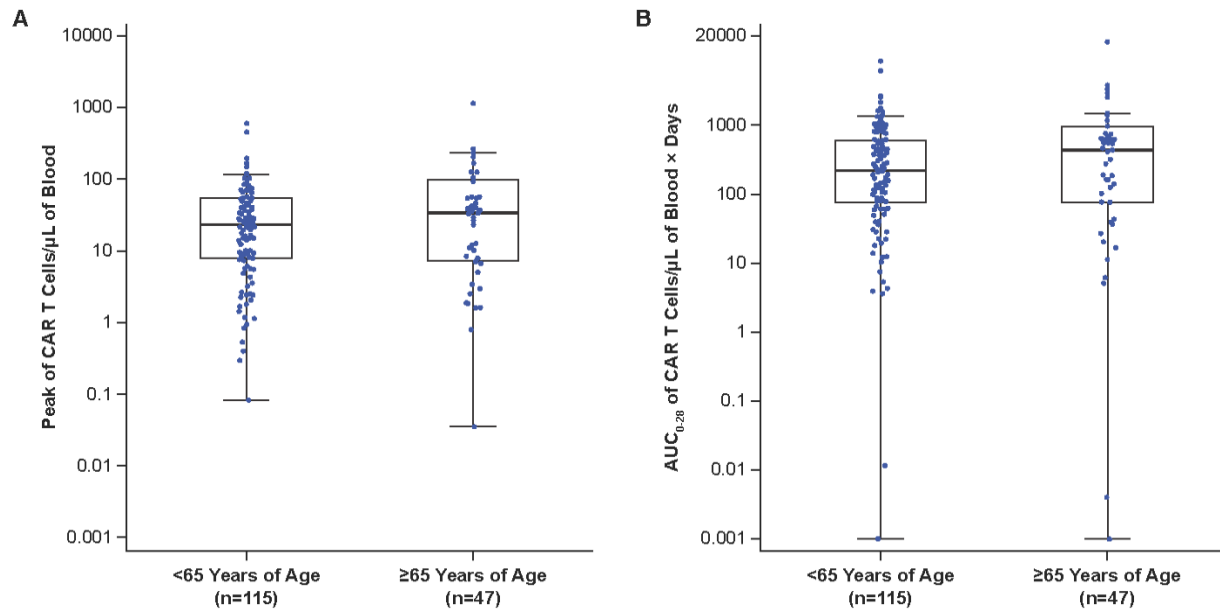


Supplementary Figure S5. CAR T-cell levels in patients ≥ 65 years



Parameter, median (Q1- Q3)	Axi-Cel N=170		P Value ^a
	<65 Years of Age (n=115)	≥ 65 Years of Age (n=47)	
Peak (cells/ μL)	23.45 (8.15-55.91)	34.80 (7.35-103.36)	0.2619
AUC_{0-28} (cells/ μL \times days)	218.84 (76.36-601.99)	445.11 (76.32-969.81)	0.2010

Figure shows CAR T-cell peak and area under the curve from 0 to 28 days following axi-cel infusion. Statistical analysis was conducted using the Wilcoxon rank-sum. ^a Reported *P* values are descriptive.

Abbreviations: AUC_{0-28} , area under the curve from day 0 to 28; axi-cel, axicabtagene ciloleucel; CAR, chimeric antigen receptor.