

Data S1. Quantified band intensities from all western blots in this study. Page 1/1

Band intensities were quantified using Odyssey software and normalized to GFP expression. 2-way ANOVA with Dunnett's multiple comparisons test. Error bars represent the mean, s.d.

*P < 0.05, **P < 0.01, ***P < 0.001, ****P < 0.0001.

Figure 1 blot quantification

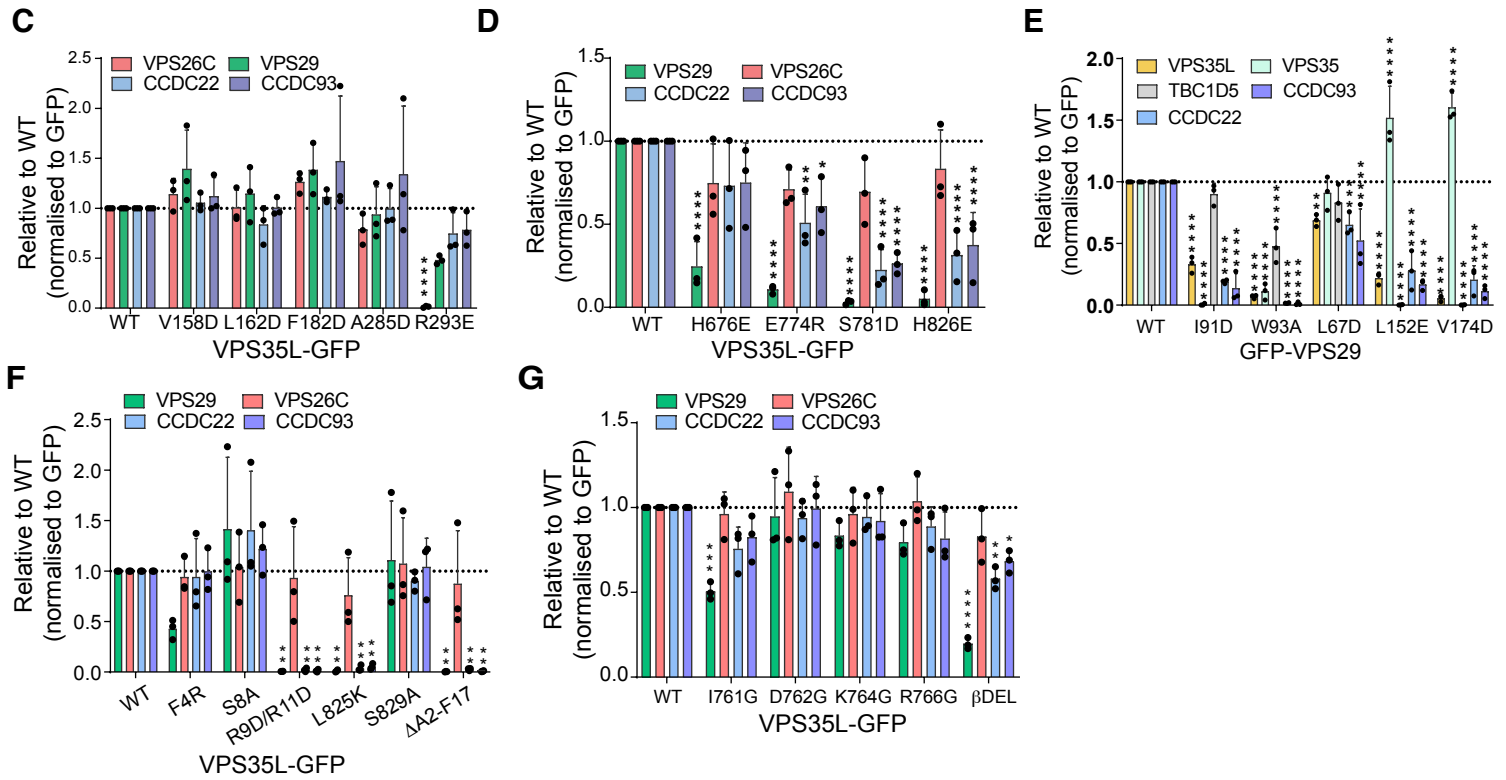


Figure 2 blot quantification

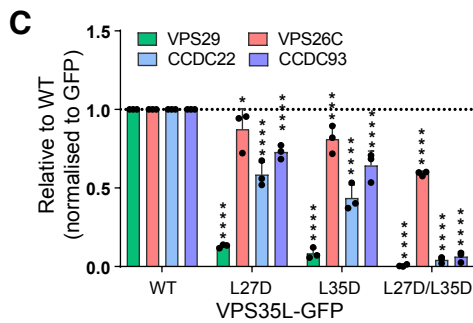


Figure 5 blot quantification

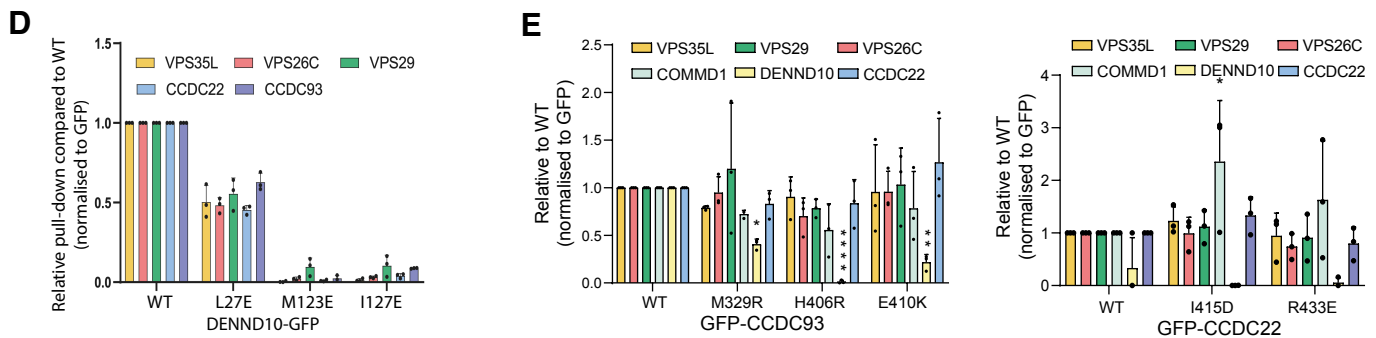
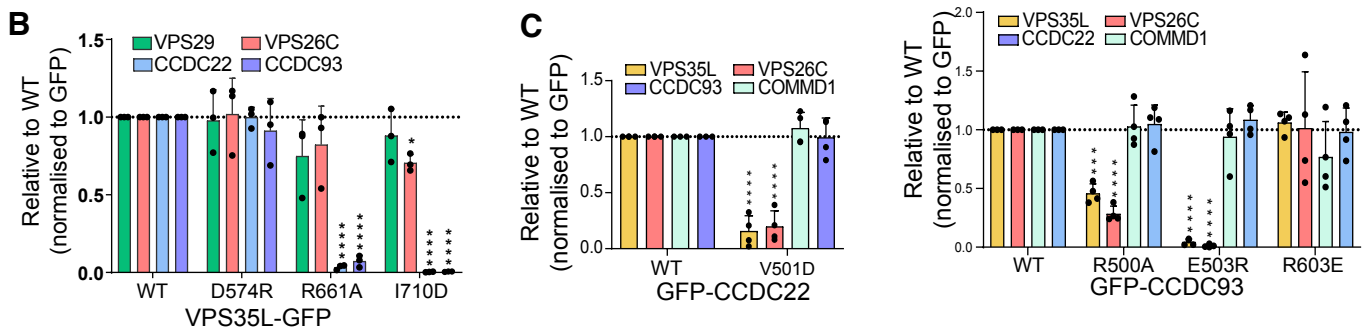
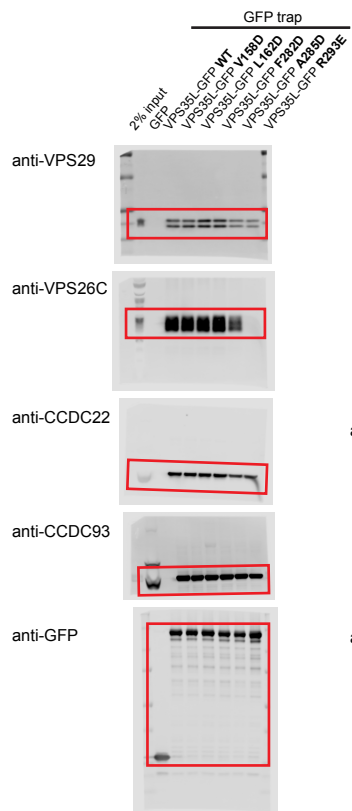


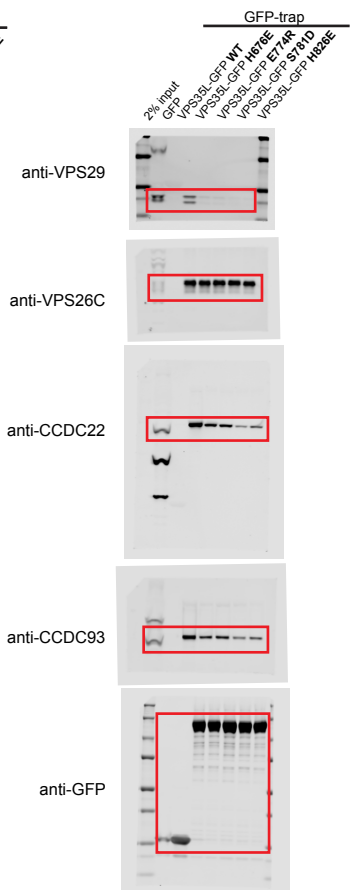
Figure 6 blot quantification



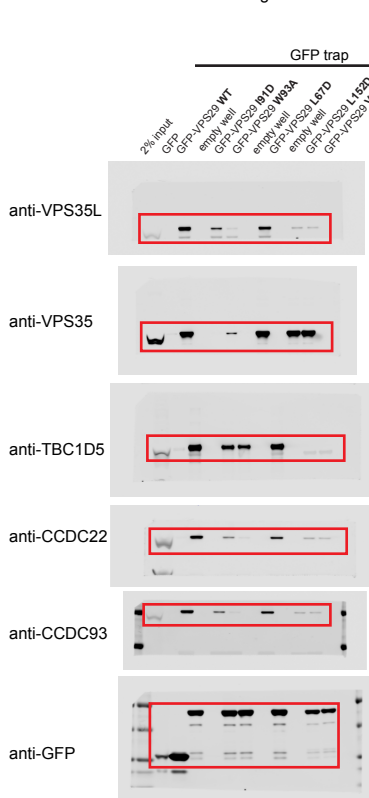
Raw data for Fig1C:



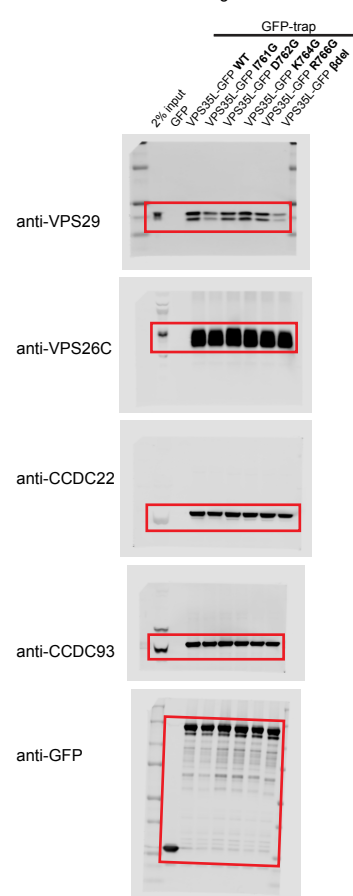
Raw data for Fig1D:



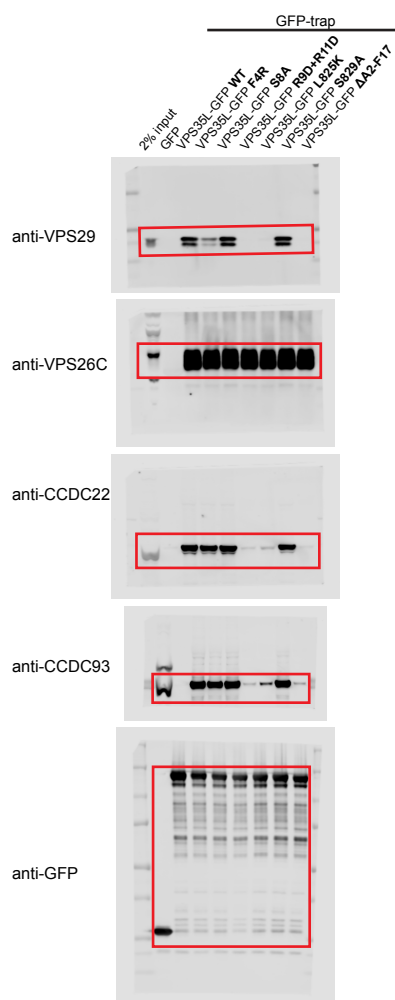
Raw data for Fig1E:



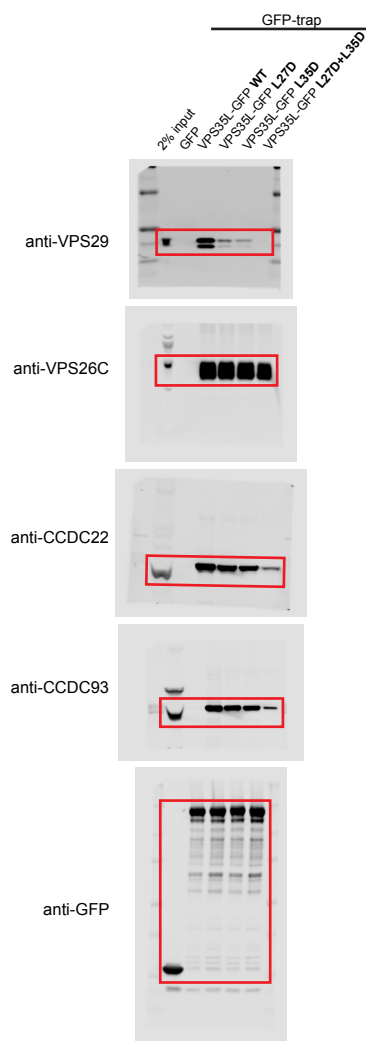
Raw data for Fig1F:



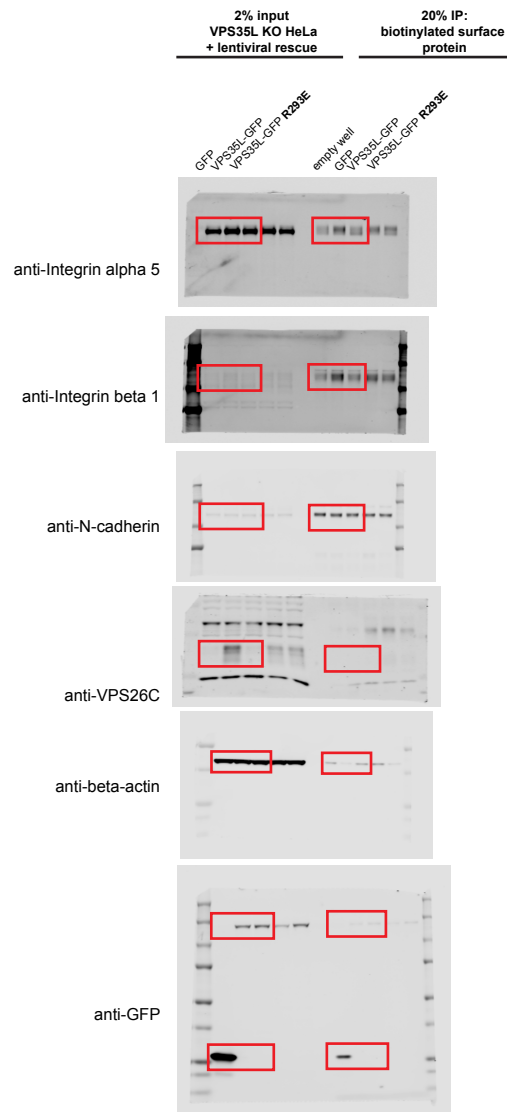
Raw data for Fig1G:



Raw data for Fig2C:

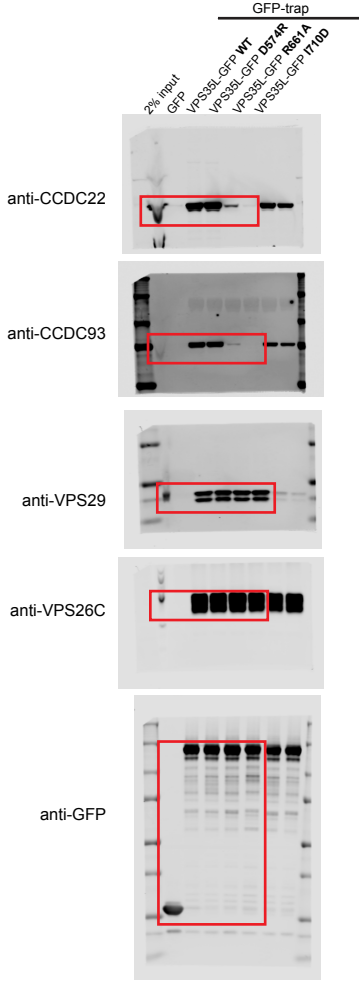


Raw data for Fig2E:

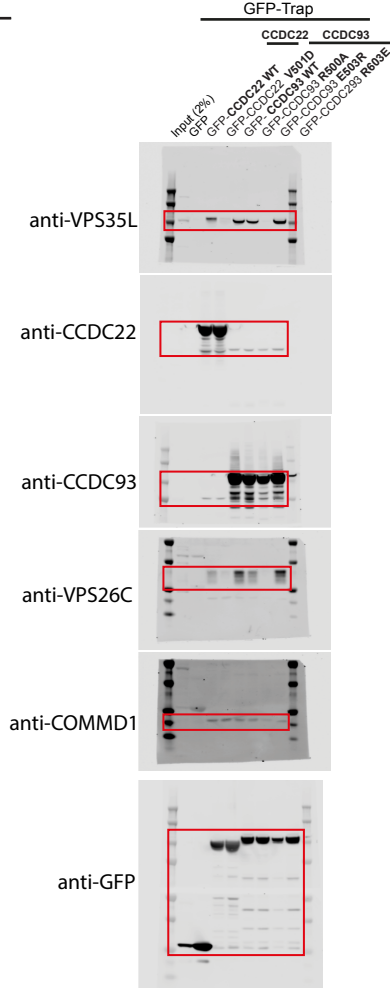


Raw images of gels and western blots included in this study. Page 2/3

Raw data for Fig5B:



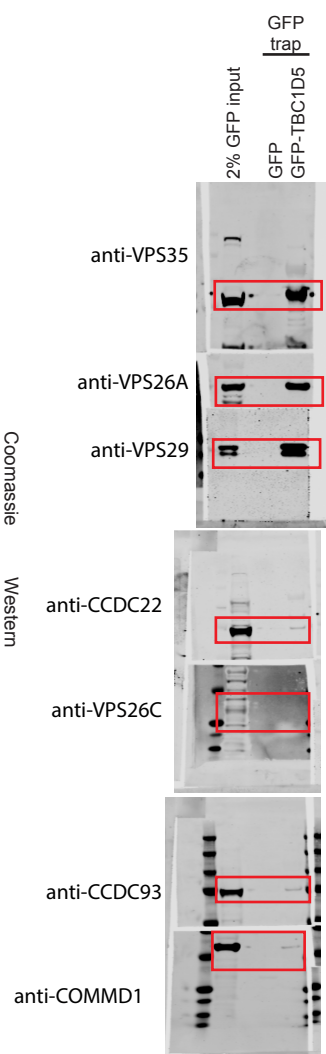
Raw data for Fig5C:



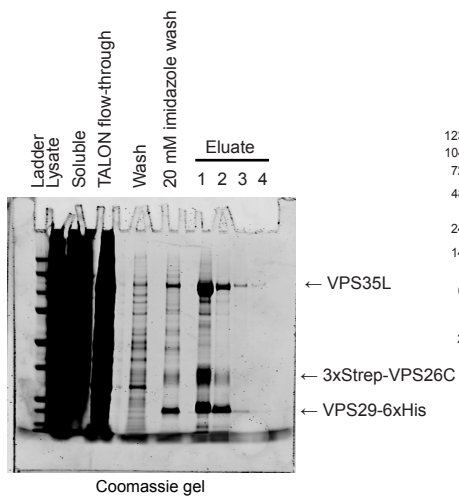
Raw data for FigS2C:



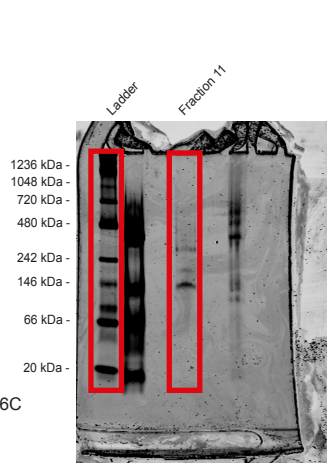
Raw data for FigS2D:



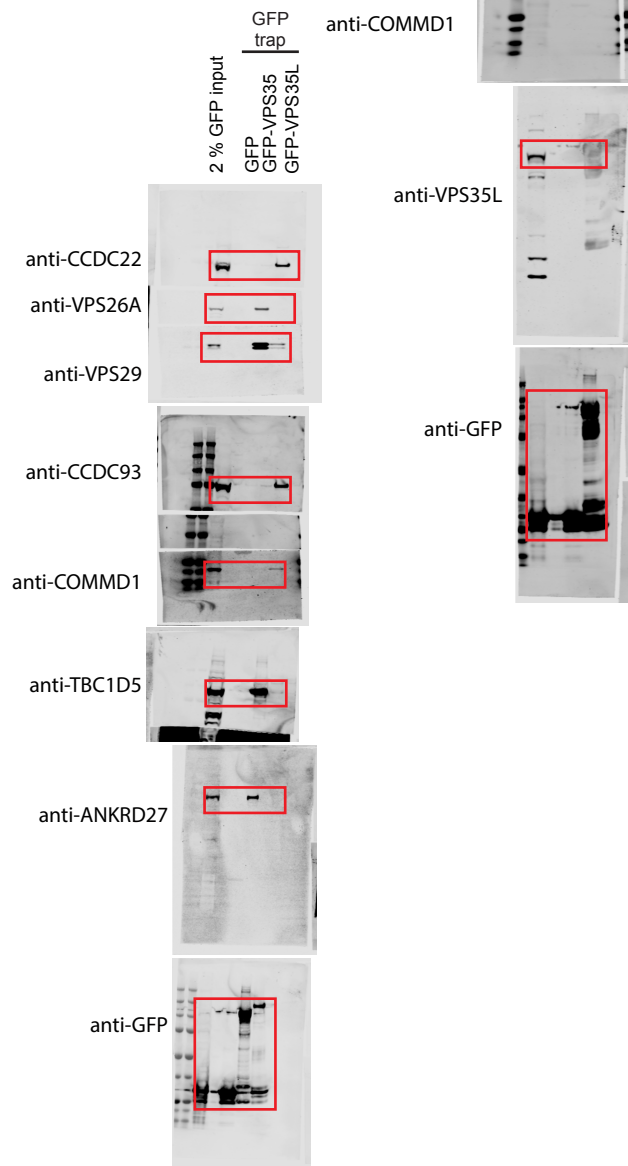
Raw data for FigS1B:



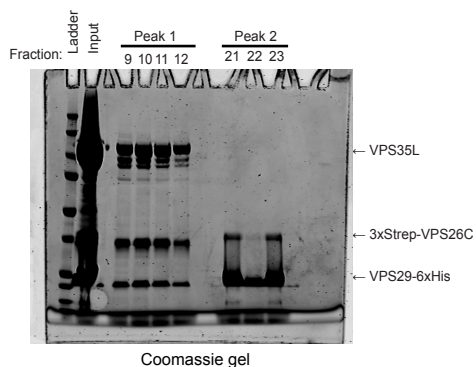
Raw data for FigS1D:



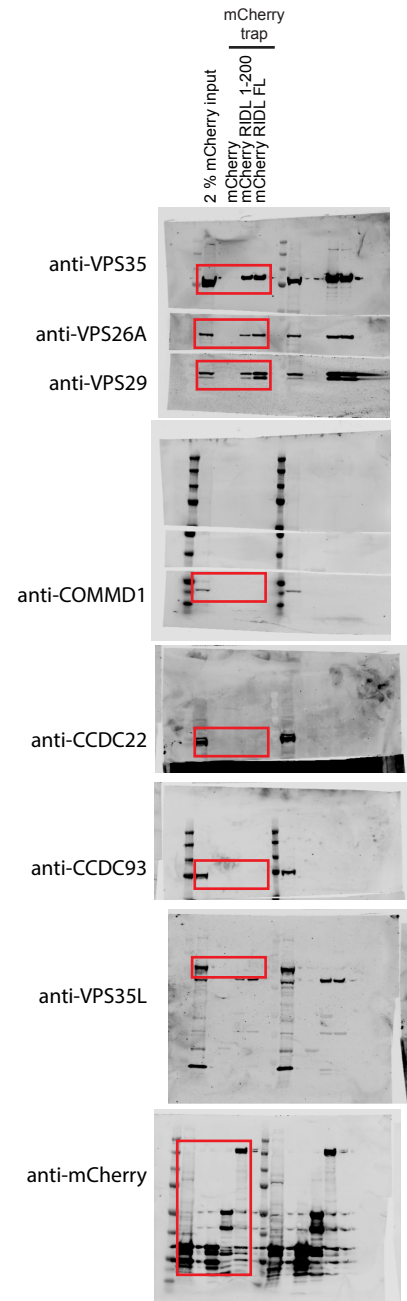
Raw data for FigS2E:



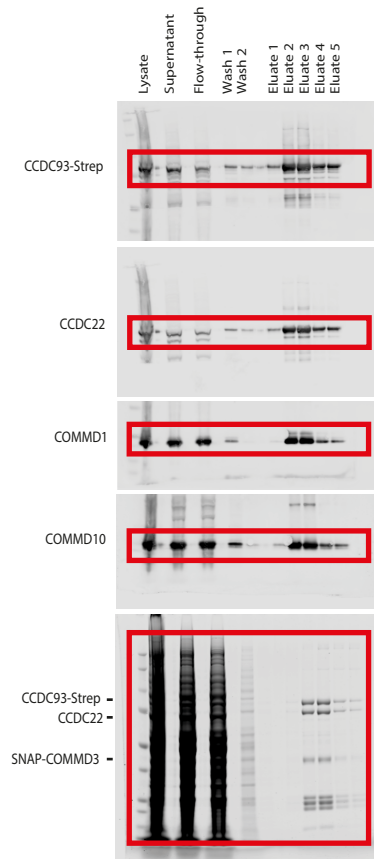
Raw data for FigS1C:



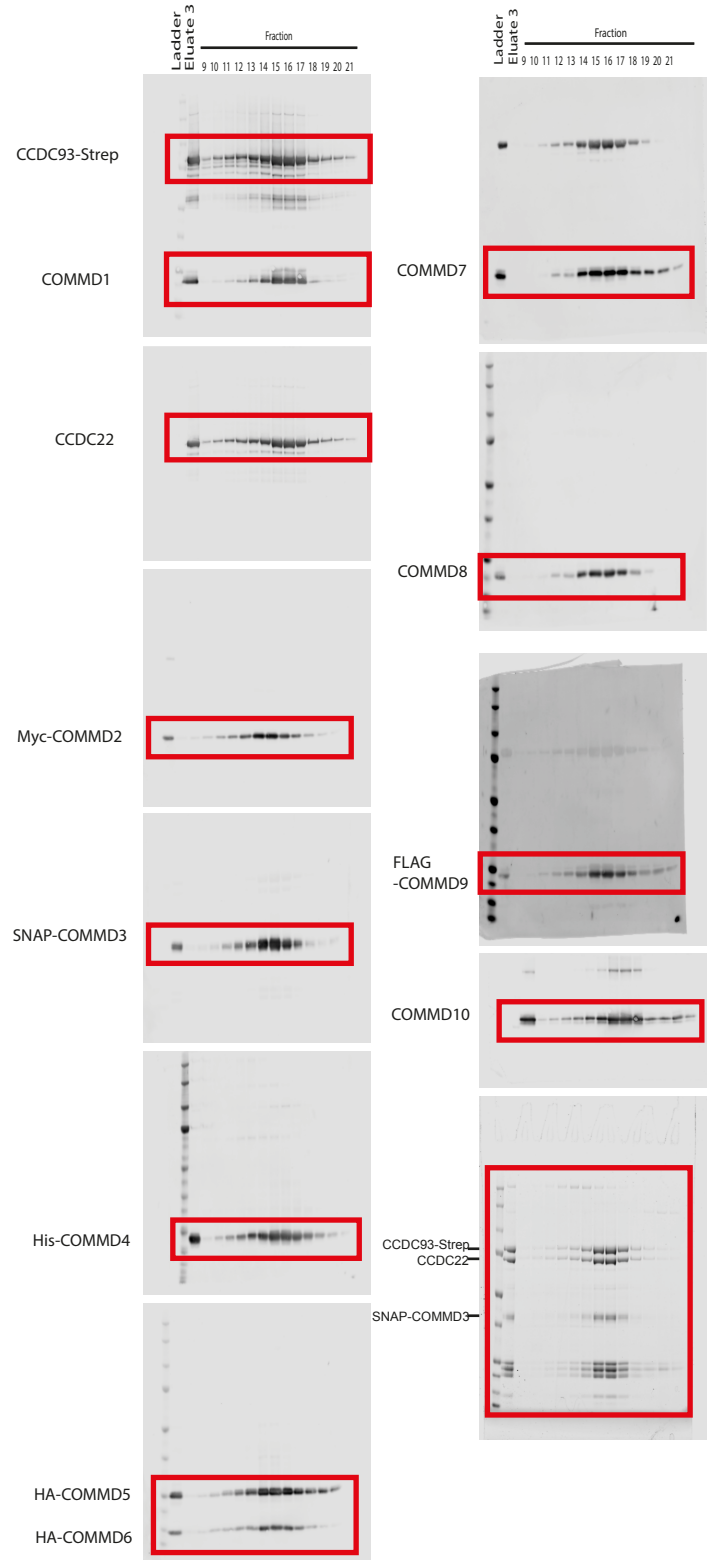
Raw data for FigS2H:



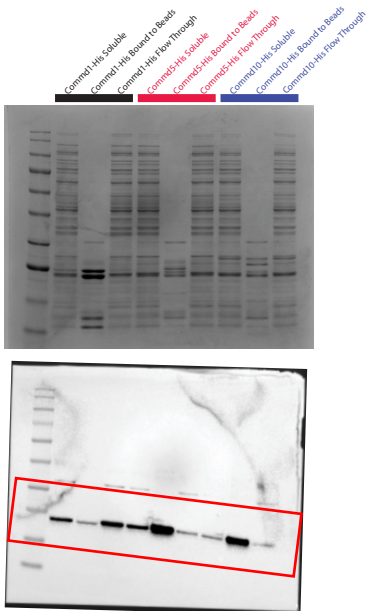
Raw data for FigS4B:



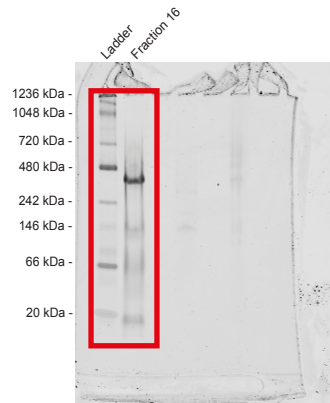
Raw data for Fig4B:



Raw data for FigS3C:



Raw data for FigS4D:



Raw data for FigS11C:

