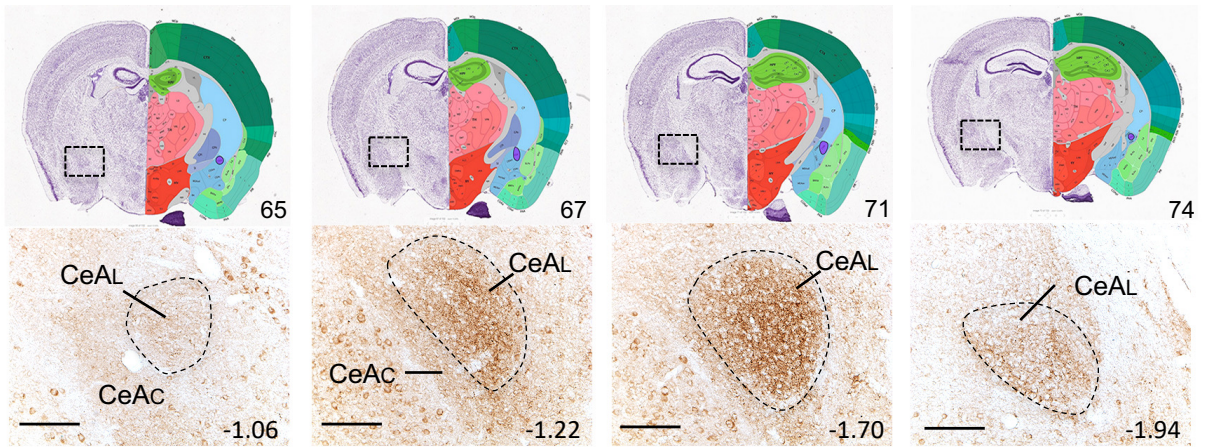


**Supplementary Figure 1.** Representative coronal sections through the rostro-caudal extent of the CeA showing differential expression levels of PACAP. **(A)** *Top panel:* representative images from the Allen Mouse Brain Atlas showing the CeA at different rostro-caudal (left to right) levels; numbers in lower right corner of each image refer to the plate image from the Allen Brain Atlas [mouse.brain-map.org](https://mouse.brain-map.org) and [atlas.brain-map.org](https://atlas.brain-map.org).<sup>95,96</sup> Boxed area on left side (Nissl stained) of image represents magnified section in lower panels of **A** showing PACAP expression (brown immunolabel) and approximate boundaries of CeAL at different rostro-caudal levels. Numbers in lower right corner of each image refer to the approximate brain level shown in millimeters posterior to bregma from the mouse brain stereotaxic atlas of Paxinos and Franklin (2019)<sup>97</sup> for reference. **(B).** Optical density (O.D.) measurements of 0.1 mm<sup>2</sup> regions through the CeAL from

Meloni et al.

serial (every third) sections through the CeA. As illustrated in the line graph, PACAP expression was strongest in caudal sections of the CeA. Scale bars = 100  $\mu$ m.

**A****B**