

## Supplemental digital content

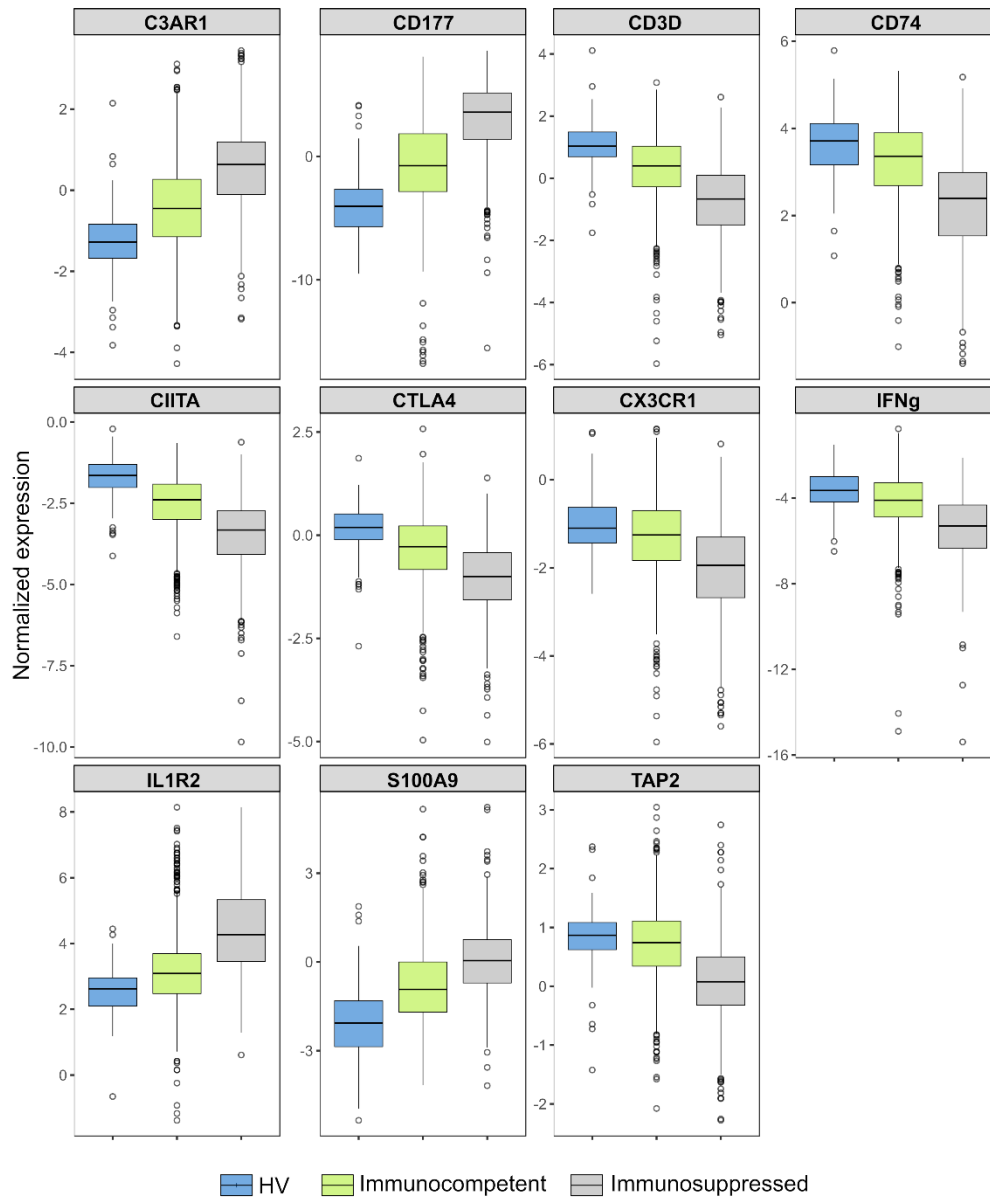
### Immune Profiling Panel gene set identifies critically ill patients with low monocyte HLA-DR expression: preliminary results from the REALISM study

Estelle Peronnet, Sophie Blein, Fabienne Venet, Elisabeth Cerrato, Aurore Fleurie, Jean-François Llitjos, Louis Kreitmann, Gabriel Terraz, Filippo Conti, Morgane Gossez, Thomas Rimmelé, Julien Textoris, Anne-Claire Lukaszewicz, Karen Brengel-Pesce, Guillaume Monneret, for the REALISM study group

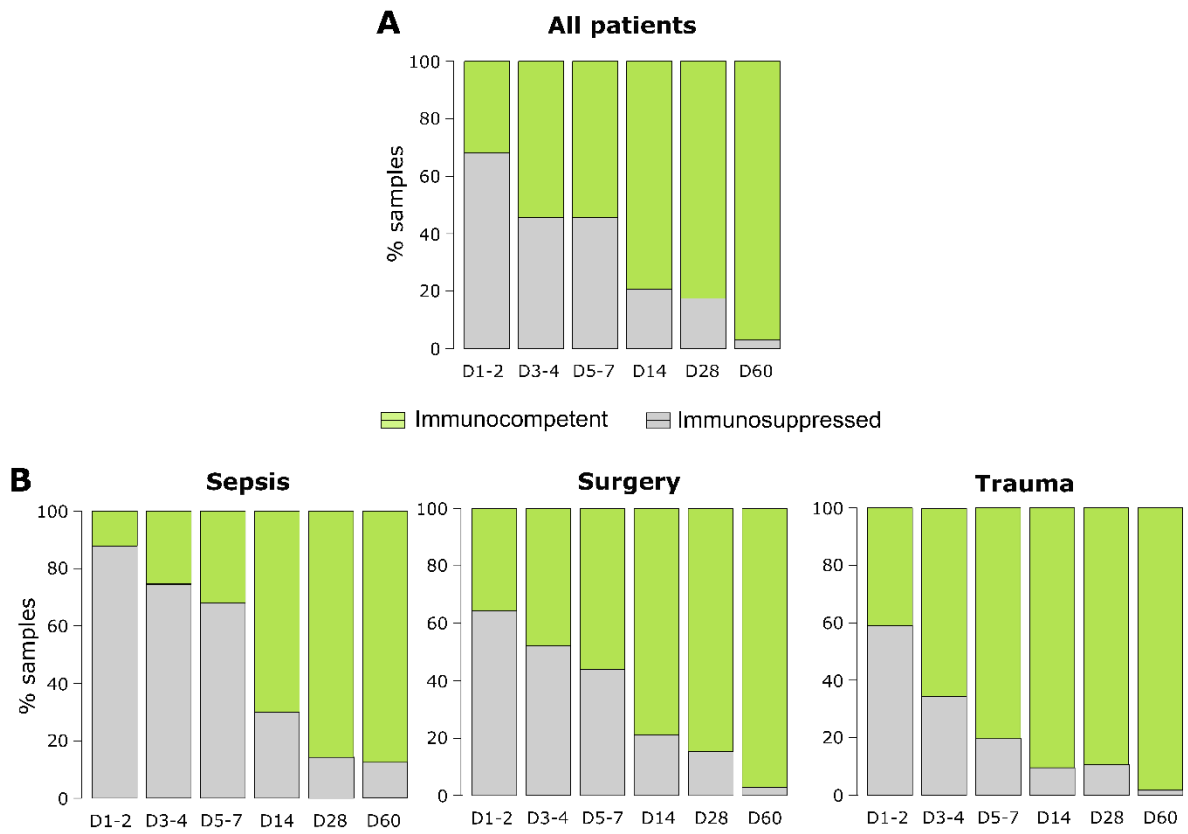
#### Table of contents

**eFigure 1.** Distribution of the expression levels of the IPP markers in healthy volunteers (HV) and in groups of samples defined according to patients' immune status.

**eFigure 2.** Immune status defined by IPP over time in **(A)** all patients and **(B)** according to patient etiology, in test set.



**eFigure 1. Distribution of the expression levels of the IPP markers in healthy volunteers (HV) and in groups of samples defined according to patients' immune status.** Expression values of all genes were significantly different between immunocompetent and immunosuppressed patients groups (Mann-Whitney test,  $p < 0.001$ ).  $n = 163$  samples from healthy volunteers,  $n = 977$  samples in the group with mHLA-DR  $> 8,000$  AB/C (immunocompetent) and  $n = 591$  samples in the group with mHLA-DR  $< 8,000$  AB/C (immunosuppressed).



**eFigure 2.** Immune status defined by IPP over time in **(A)** all patients and **(B)** according to patient etiology, in test set.