

Supplemental Online Content

Joseph P, Roy A, Lonn E, et al. Global variations in heart failure etiology, management, and outcomes. *JAMA*. doi:10.1001/jama.2023.5942

eTable 1. Summary of Countries by Region and Countries Grouped by Income Status

eTable 2. Proportion of Missing Data for Variables Collected at Baseline for This Analysis

eTable 3. Causes of Heart Failure by Country Income Level

eTable 4. Use of Heart Failure Therapies in HFrEF by Country Income Level

eTable 5. Hazard Ratios for Death by Country Income Level After Adjusting for Patient Level Risk Factors in Participants With a Documented LVEF <40%

eTable 6. Analysis of Risk of Death in Participants Stratified by i) Duration on Known Heart Failure Prior to Enrollment and ii) Inpatient Versus Outpatient Enrollment

eFigure 1. Age- and Sex-Standardized Rates of Death and First Hospitalization for Any Cause by Countries Grouped by Income Level

eFigure 2. Country-Level Correlations of Gross National Income With the Rate of Death and the Rate of First Hospitalization

eFigure 3. Crude 30-Day Case Fatality From the Time of the First Hospital Admission, Which Was Due to A) Any Cause, B) Heart Failure, and C) Cause Other Than Heart Failure

eAppendix 1. Description of Study Follow-up

eAppendix 2. National Leaders (NLs), Principal Investigators (PIs), Co-Investigators (Co-Is), and Sub-Investigators (Sub-Is)

This supplemental material has been provided by the authors to give readers additional information about their work.

eTable 1. Summary of Countries by Region and Countries Grouped by Income Status

Country Status	Income	Countries
HICs		Canada, United States UK, Ireland, France, Italy, Switzerland, Germany, Sweden, Iceland, Spain, Portugal, Denmark, Poland, Chile, Saudi Arabia, UAE
UMICs		Russia, China, South Africa, Mexico, Brazil, Argentina, Colombia, Turkey, Ecuador, Botswana
LMICs		Ukraine, India, Philippines, Pakistan, Sudan, Nigeria, Cameroon, Kenya, Egypt
LICs		Mozambique, Tanzania, Uganda, Nepal

HICs = high-income countries, LICs = low-income countries, LMICs = lower-middle-income countries, UMICs = upper-middle-income countries

eTable 2. Proportion of Missing Data for Variables Collected at Baseline for This Analysis

Variable	Missing data from 23,341 participant cohort N (%)
Age	1 (0.004)
Sex	0 (0)
In-patient	0 (0)
Education	93 (0.4)
HF etiology	42 (0.2)
HF duration	5 (0.02)
Renal function categories	2 (0.009)
Systolic blood pressure	66 (0.3)
Hypertension	2 (0.009)
Diabetes	2 (0.009)
Body mass index	572 (2.4)
Tobacco Use	36 (0.2)
Alcohol Use	66 (0.3)
COPD	2 (0.009)
Left ventricular ejection fraction data missing	493 (2.1)
No echo performed in last year to document left ventricular ejection fraction*	3661 (15.7)
New York Heart Association Class	114 (0.5)
β-blocker	8 (0.03)
Renin-angiotensin system inhibitor	8 (0.03)
Mineralocorticoid receptor antagonist	10 (0.04)
Implantable cardioverter defibrillator	2 (0.009)

*In these cases, the left ventricular ejection fraction was not collected

eTable 3. Causes of Heart Failure by Country Income Level

	Overall N = 23,299	HICs N = 8675	UMICs N = 5777	LMICs N = 6937	LICs N = 1910	p- value
Ischemic	8899 (38.2)	3804 (43.9)	2696 (46.7)	2014 (29.0)	385 (20.2)	<0.001
Hypertension	4709 (20.2)	1161 (13.4)	1110 (19.2)	1930 (27.8)	508 (26.6)	<0.001
Dilated	3590 (15.4)	1452 (16.7)	699 (12.1)	1000 (14.4)	439 (23.0)	<0.001
Valvular: Rheumatic	1133 (4.9)	115 (1.3)	203 (3.5)	594 (8.6)	221 (11.6)	<0.001
Valvular: Non-Rheumatic	944 (4.1)	435 (5.0)	221 (3.8)	238 (3.4)	50 (2.6)	<0.001
Other	4024 (17.2)	1708 (19.7)	848 (14.7)	1161 (16.8)	307 (16.0)	<0.001
Tachycardia mediated	682 (2.9)	410 (4.7)	127 (2.2)	130 (1.9)	15 (0.8)	
Peripartum cardiomyopathy	492 (2.1)	26 (0.3)	36 (0.6)	332 (4.8)	98 (5.1)	
Hypertrophic	363 (1.6)	164 (1.9)	116 (2.0)	66 (1.0)	17 (0.9)	
Alcohol	279 (1.2)	155 (1.8)	25 (0.4)	63 (0.9)	36 (1.9)	
Chemotherapy or radiotherapy related	150 (0.6)	117 (1.3)	18 (0.3)	8 (0.1)	7 (0.4)	
Congenital heart disease	146 (0.6)	65 (0.7)	35 (0.6)	39 (0.6)	7 (0.4)	
Cor Pulmonale	131 (0.6)	18 (0.2)	52 (0.9)	34 (0.5)	27 (1.4)	
Metabolic, endocrine, or renal related	112 (0.5)	39 (0.4)	38 (0.7)	26 (0.4)	9 (0.5)	
Chagas' Disease	92 (0.4)	3 (0.0)	87 (1.5)	2 (0.0)	0 (0.0)	
Viral or other myocarditis	78 (0.3)	39 (0.4)	17 (0.3)	21 (0.3)	1 (0.1)	
HIV cardiomyopathy	66 (0.3)	2 (0.0)	14 (0.2)	23 (0.3)	27 (1.4)	
Infiltrative cardiomyopathy	49 (0.2)	32 (0.4)	8 (0.1)	8 (0.1)	1 (0.1)	
Endomyocardial fibrosis	44 (0.2)	14 (0.2)	12 (0.2)	11 (0.2)	7 (0.4)	
Tuberculosis related	27 (0.1)	1 (0.0)	8 (0.1)	12 (0.2)	6 (0.3)	
Familial cardiomyopathy	26 (0.1)	23 (0.3)	1 (0.0)	2 (0.0)	0 (0.0)	
Pericardial disease related	25 (0.1)	9 (0.1)	0 (0.0)	12 (0.2)	4 (0.2)	
Sarcoidosis	21 (0.1)	21 (0.2)	0 (0.0)	0 (0.0)	0 (0.0)	
ARVC	19 (0.1)	7 (0.1)	12 (0.2)	0 (0.0)	0 (0.0)	
Non-compaction cardiomyopathy	17 (0.1)	9 (0.1)	6 (0.1)	2 (0.0)	0 (0.0)	
Sepsis	14 (0.1)	6 (0.1)	6 (0.1)	0 (0.0)	2 (0.1)	
Pacemaker related	12 (0.1)	11 (0.1)	1 (0.0)	0 (0.0)	0 (0.0)	
Bradycardia	12 (0.1)	3 (0.0)	2 (0.0)	2 (0.0)	5 (0.3)	
Connective tissue or autoimmune disease related	12 (0.1)	8 (0.1)	3 (0.1)	1 (0.0)	0 (0.0)	
Takotsubo cardiomyopathy	7 (0.0)	7 (0.1)	0 (0.0)	0 (0.0)	0 (0.0)	
High output	7 (0.0)	2 (0.0)	0 (0.0)	1 (0.0)	4 (0.2)	
Post heart transplant	5 (0.0)	2 (0.0)	3 (0.1)	0 (0.0)	0 (0.0)	
Other or unknown cause	1136 (4.9)	515 (5.9)	221 (3.8)	366 (5.3)	34 (1.8)	

ARVC = arrhythmogenic right ventricular cardiomyopathy, HF = heart failure, HICs = high-income countries, HIV = human immunodeficiency virus, LICs = low-income countries, LMICs = lower-middle-income countries, UMICs = upper-middle-income countries

eTable 4. Use of Heart Failure Therapies in HFrEF by Country Income Level

	Overall	HICs	UMICs	LMICs	LICs	p-value
n	11642	4263	2554	3685	1140	
B-Blocker	9833 (84.5)	3997 (93.8)	2293 (89.8)	2708 (73.5)	835 (73.2)	<0.001
RAS inhibitor	9329 (80.1)	3700 (86.8)	2148 (84.1)	2498 (67.8)	983 (86.2)	<0.001
ACEi	5717 (49.1)	2015 (47.3)	1245 (48.7)	1799 (48.8)	658 (57.7)	<0.001
ARB	2477 (21.3)	834 (19.6)	668 (26.2)	649 (17.6)	326 (28.6)	<0.001
Sacubitril/ Valsartan	1227 (10.5)	899 (21.1)	262 (10.3)	64 (1.7)	2 (0.2)	<0.001
MRA	7587 (65.2)	2469 (57.9)	1972 (77.2)	2454 (66.6)	692 (60.7)	<0.001
Digoxin	2244 (19.3)	426 (10.0)	557 (21.8)	892 (24.2)	369 (32.4)	<0.001
Ivabradine	621 (5.3)	199 (4.7)	144 (5.6)	267 (7.2)	11 (1.0)	<0.001
Hydralazine	298 (2.6)	160 (3.8)	28 (1.1)	95 (2.6)	15 (1.3)	<0.001
Diuretics	9699 (83.3)	3309 (77.6)	1995 (78.1)	3342 (90.7)	1053 (92.4)	<0.001
Nitrates	1381 (11.9)	392 (9.2)	312 (12.2)	521 (14.1)	156 (13.7)	<0.001
Combination of β -Blocker, RAS inhibitor, MRA						<0.001
0	274 (2.4)	44 (1.0)	25 (1.0)	170 (4.6)	35 (3.1)	
1	1714 (14.7)	449 (10.5)	224 (8.8)	820 (22.3)	221 (19.4)	
2	3917 (33.7)	1592 (37.4)	723 (28.3)	1239 (33.6)	363 (31.8)	
3	5733 (49.3)	2177 (51.1)	1581 (61.9)	1454 (39.5)	521 (45.7)	
Implantable cardioverter-defibrillator*	1329 (14.5)	1031 (30.3)	260 (13.5)	35 (1.2)	3 (0.3)	<0.001

*Reported in the subset of 9192 participants with EF \leq 35%. ACEi = angiotensin converting enzyme inhibitor, ARB = angiotensin receptor blocker, HICs = high-income countries, LICs = low-income countries, LMICs = lower-middle-income countries, MRA = mineralocorticoid receptor antagonist, UMICs = upper-middle-income countries

eTable 5. Hazard Ratios for Death by Country Income Level After Adjusting for Patient Level Risk Factors in Participants With a Documented LVEF \leq 40%

	Model 1: Age and sex adjusted HR (95% CI)	p-value	Model 2: Adjusted for patient characteristics and heart failure therapies HR (95% CI)	p-value
HICs	Reference		Reference	
UMICs	1.27 (1.14-1.41)	<0.001	1.16 (1.04 -1.30)	0.02
LMICs	2.01 (1.84-2.20)	<0.001	1.59 (1.42-1.77)	<0.001
LICs	2.48 (2.21-2.79)	<0.001	2.41 (2.11-2.76)	<0.001

Model 1: Age and sex adjusted

Model 2: Model 1 + clinical characteristics (BMI, diabetes, COPD, current tobacco use, stage 4-5 kidney dysfunction, NYHA class, HF duration >12 months) + HF etiology [ischemic, dilated, rheumatic valvular, non-rheumatic valvular, other] + in-patient recruitment + education level + chronic HF treatments (β -blocker, RAS inhibitor, MRA, ICD).

CI = confidence interval, HICs = high-income countries, HR = hazard ratio, LICs = low-income countries, LMICs = lower-middle-income countries, UMICs = upper-middle-income countries.

eTable 6. Analysis of Risk of Death in Participants Stratified by i) Duration on Known Heart Failure Prior to Enrollment and ii) Inpatient Versus Outpatient Enrollment

i) Heart Failure Duration

	HR (95% CI)	p-value for interaction
		<0.001
Heart failure duration ≤ 12 months		
HICs	Reference	
UMICs	1.16 (0.98-1.38)	
LMICs	1.39 (1.19-1.62)	
LICs	2.24 (1.87-2.67)	
Heart failure duration > 12 months		
HICs	Reference	
UMICs	0.95 (0.87-1.05)	
LMICs	1.61 (1.47-1.77)	
LICs	1.97 (1.73-2.25)	

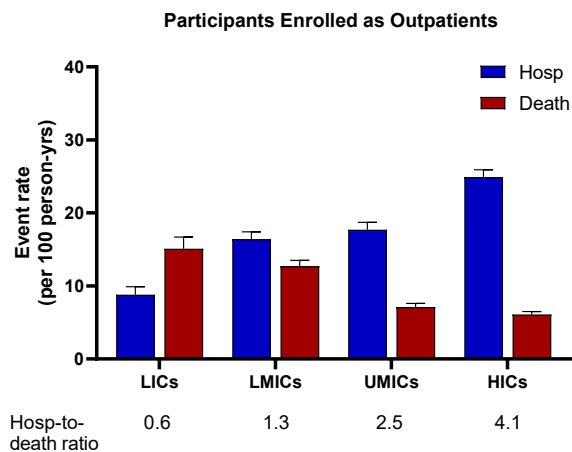
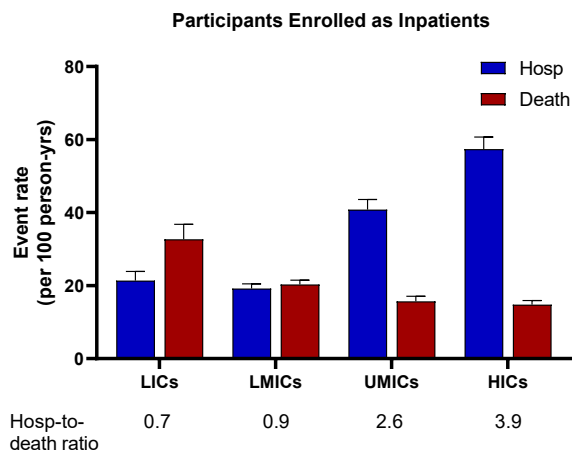
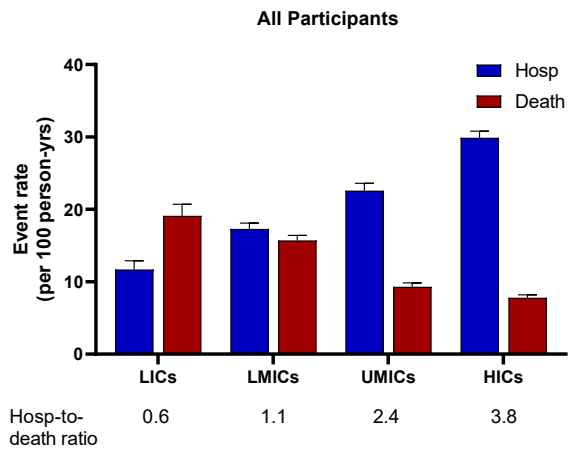
CI = confidence interval, HICs = high income countries, HR = hazard ratio, LICs = low income countries, LMICs = lower middle-income countries, UMICs = upper middle-income countries.

i) Enrollment as inpatient versus outpatient

	HR (95% CI)	p-value for interaction
		<0.001
Inpatient enrollment		
HICs	Reference	
UMICs	0.93 (0.82-1.06)	
LMICs	1.27 (1.13-1.43)	
LICs	1.93 (1.65-2.26)	
Outpatient enrollment		
HICs	Reference	
UMICs	1.04 (0.94-1.16)	
LMICs	1.73 (1.56-1.92)	
LICs	2.12 (1.85-2.43)	

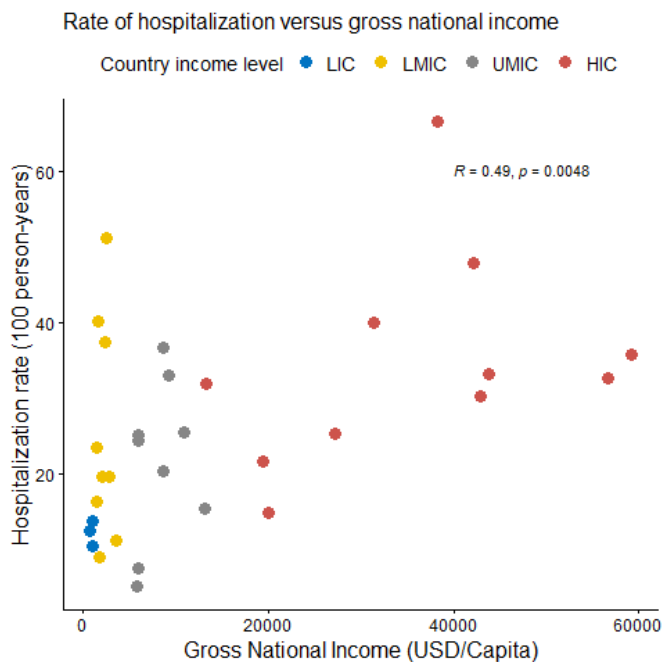
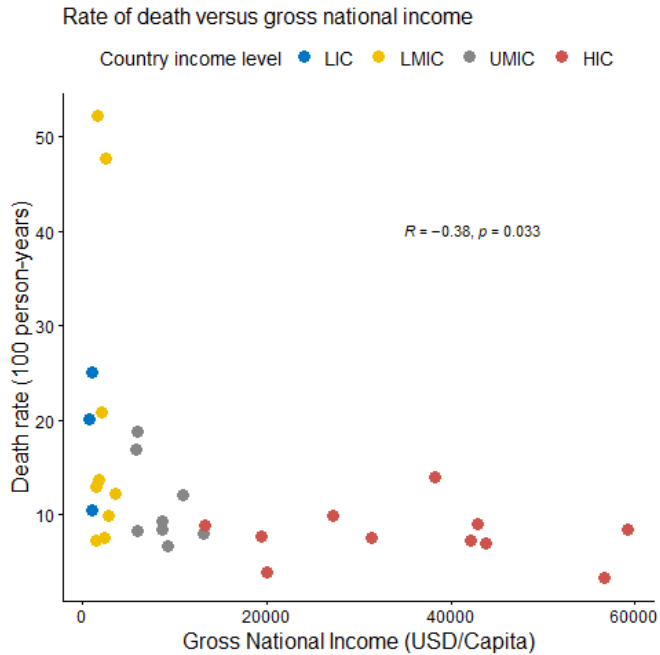
CI = confidence interval, HICs = high-income countries, HR = hazard ratio, LICs = low-income countries, LMICs = lower-middle-income countries, UMICs = upper-middle-income countries.

eFigure 1. Age- and Sex-Standardized Rates of Death and First Hospitalization for Any Cause by Countries Grouped by Income Level



HICs = high-income countries, Hosp = first hospitalization, LICs = low-income countries, LMICs = lower-middle-income countries, UMICs = upper-middle-income countries.

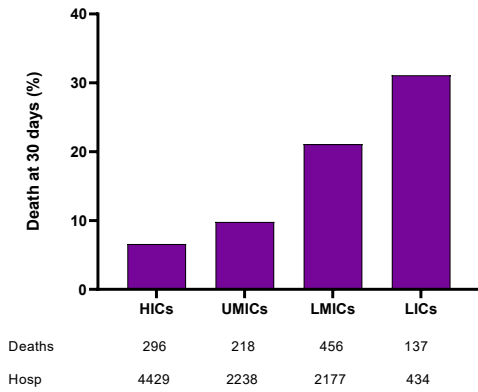
eFigure 2. Country-Level Correlations of Gross National Income With the Rate of Death and the Rate of First Hospitalization



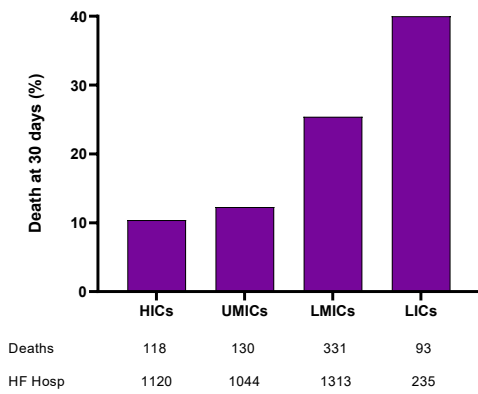
Gross national income per capita using the Atlas method was collected for each country from the World Bank for the year 2017, which represents the first full year of enrollment in the study (<https://data.worldbank.org/indicator/NY.GNP.PCAP.CD>). Mexico, Poland, Mozambique, and the United Kingdom/Ireland were not included because standardized rates of death, and rates of hospitalization, could not be estimated due to small numbers of events in these countries. HICs = high-income countries, LICs = low-income countries, LMICs = lower-middle-income countries, UMICs = upper-middle-income countries, USD = United States Dollars.

eFigure 3. Crude 30-Day Case Fatality From the Time of the First Hospital Admission, Which Was Due to A) Any Cause, B) Heart Failure, and C) Cause Other Than Heart Failure

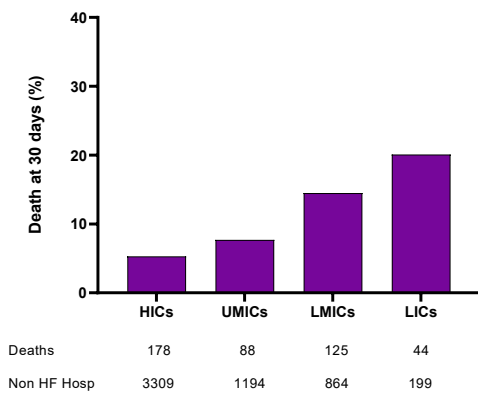
First hospitalization



Heart failure hospitalization



Non-heart failure hospitalization



HICs = high-income countries, HF = heart failure, Hosp = first hospitalization, LICs = low-income countries, LMICs = lower-middle-income countries, UMICs = upper-middle-income countries.

eAppendix 1. Description of Study Follow-up

Initial study follow-up was planned for two follow-up visits at twelve and twenty-four months (with interim telephone calls at 6 and 18 months to assess vital status and hospitalizations) following the baseline assessment. Consent was then obtained for a long-term follow-up extension comprised of yearly study visits, which is currently ongoing. During follow-up, data were collected on symptom status, medication usage (with dose), and clinical events. Deaths were recorded, and their causes ascertained by local review of relevant source documents. Morbidity was ascertained by local review of hospitalizations, new diagnoses and interventional or surgical procedures. Additional information was obtained by contacting one of the patient's physicians or next of kin, where possible, and only with prior consent from participants through a patient contact information consent form.

eAppendix 2. National Leaders (NLs), Principal Investigators (PIs), Co-Investigators (Co-Is), and Sub-Investigators (Sub-Is)

Study Principal Investigator: S. Yusuf

Population Health Research Institute: P. Joseph, D. Leong, E. Lonn, M. Duong

Argentina (552*): M. L. Diaz and J. M. Dominguez (National Leaders), S. Andrés Nemi, F. A. Bilancieri, S. Cardona, W. P. Casali, M. A. Castoldi, N. Cluigt, M. S. Copponi, G. Cursack, M. S. Cursack, R. G. Duran, C. F. Garcia, J. Hasbani, E. Hasbanl, M. A. Hominal, I. MacKinnon, P. E. Martinez Monferrán, A. Meirino, G. Paterlini, A. Picech, A. Prado, M. Rasmussen, D. G. Rojas, A. Rojas, V. L. Sernia, P. L. Varela, F. M. Venisio, O. G. Vilamajo, C. J. Zaidman, G. Zapata **Botswana (229*):** J. Mwita (National Leader), E. Botsile, M. Goepamang **Brazil (686*):** A. Avezum Jr. (National Leader), E. Abib Jr., A. S. Almeida, E. Azeveas, S. Z. Bazan, R. Bazan, L. Berret, B. Biselli, N. Clausell, O. M. Costa, V. De Barros, F. De Martino, L. J. De Paula, L. De Resende, R. De Sousa, W. K. S. B. De Souza, G. De Souza Pantano, M. Del Monaco, D. Drumond, O. P. Dutra, G. Fazolli, J. Ferreira, F. E. Giorgeto, P. G. Goldstein, R. B. Guimaraes, M. E. Hernandez, A. Humberto Vaz, S. Jallad, M. A. Lemos, L. N. Maia, L. Massari, L. F. Medeiros, C. Minelli, M. Nakazone, F. Nobre, L. Oliveira, M. Oliveira, R. Padilha, R. Pavanello, W. Queiroz, G. Reis, E. Rejane, J. G. Rodrigues de Paula, T. L. Scudeler, M. Silva, A. Soeiro, A. Sousa, A. Souza, T. Torres, H. Vaz **Cameroon (1365*):** A. Dzudie (National Leader), C. K. Kouam, J. P. Abah, S. M. Abang, J. C. Ambassa, P. E. Anou, H. M. Ban'Haka, N. Clovis, S. Colette, S. A. N. Feuzeu, T. G. Fomekong, G. E. Manon, J. Ndjebet, N. Ngai, C. N. Nganou-Gnindjio, F. A. D. Ngongang, A. Nyanga, D. Palmer, N. Pierre, T. W. Sylvie, A. D. Tamdja, C. Tantchou **Canada (1908*):** C. Alba, A. Al-Hesayen, K. Anderson, M. Barrero, S. Bergeron, M. Bernier, F. Billia, C. Bourgault, B. Cantin, R. Costa, D. Delgado, A. Diaz, A. Ducharme, L. Duchesne, J. Ezekowitz, K. Flores, C.-E. Gagne, M. Garand, D. Hayami, G. Heckman, C. Henri, M.-H. Leblanc, C. Lemay, S. Lepage, N. Lounsbury, M. McDonald, R. McKelvie, G. Moe, J. Morin, K. O'Connor, E. O'Meara, Y. Pépin Dubois, G. Proulx, N. Racine, M. Rajda, P. Rheault, H. Ross, A. Schaffer, M. Senechal, Y. T. Sia, R. Singh, S. Smith, E. Swiggum, M. Toma, F. Tournoux, M. White, A. Yip, S. Zieroth **Chile (359*):** F. Lanas (National Leader), B. Bobadilla, G. Jano, M. Medina, S. Saavedra, M. Vega **China (1764*):** J. Zhu and H. Tan (National Leaders), F. Ai, X. Bai, X. Chen, Y. Chen, X. Gao, J. W. Gou, X. Hao, Z. Jia, H. Jiang, W. Jin, T. Liang, X. W. Liang, Y. Liang, H. Y. Luo, J. Peng, S. Qin, L. Ruihong, H. Tan, G. Tan, X. Wang, T. Wang, M. Wang, F. Wei, J. Wu, J. Xu, J. Yanhong, X. Yang, W. Yuanyuan, X. Yun, T. Zheng, W. Zhijun, W. Zhou **Colombia (807*):** J. Gomez-Mesa (National Leader), T. Alvarez, W. B. Ariza, M. A. Betanar Diaz, J. Buelvas W. A. Buelvas Argumedo, A. Buitrago, A. Cadena Bonfanti, H. Calvo, E. M. M. Carreno, L. A. Caycedo, J. A. Ceron, F. A. T. Dada, V. De La Esprula, D. I. M. De Salazar, S. Del Pilar Baracaldo Gimet, J. E. V. Eljach, A. Garcia, F. Gomez, H. G. Lozada, E. Martinez, J. L. A. Mendoza, A. Monton, G. S. Moreno, N. Murillo, M. M. D. Olite, O. Olite, S. Pardo, A. Patricia, F. Quiroz, S. Redondo, C. E. Rivera, N. Rodríguez, M. Rojas, J. Rueda, J. F. Salazar, J. Sandoval, F. A. Solano, J. M. Valiente, J. E. Vargas Eljach **Denmark (268*):** K. Kragholm (National Leader), G. Gislason, S. H. Jørgensen, G. Nielsen, M. W. Pedersen, P. V. Rasmussen, P. Søgaaard, H. Wiggers **Ecuador (498*):** P. Lopez-Jaramillo (National Leader), N. Anzules, S. Carrasco, Y. C. Duarte, I. Herrera, M. S. Jaramillo, D. Jimenez, P. Llomes, F. P. C. Long, J. Lopez, E. Paez, P. Perez, F. Ponce, B. Saenz, F. Trujillo, E. Vargas, M. S. Velez, M. L. Villota, I. Zuelta **Egypt (230*):** K. Wagdy Shaker (National Leader), P. P. Selwanos, M. Yacoub **France (162*):** F. Alla (National Leader), R. Boulestreav, N. Bourrelly, N. Delarche, A. Didier, L.-L. Diene, P. Gosse, S. Goussot, J. Paul Guillot, K. H. Hamou, F. Jourda, D. Kenizou, M. Mansour, G. Papaïoannou, E. Rugina, I.-M. Suzanne, J. Michel Tartiere **Germany (1300*):** G. Ertl (National Leader), T. Wittlinger (National Leader), P. Alger, I. Alsoudi, S.-E. Baller, E. Blank, M. Bockmann, K. Boelmans, M. C Bott, F. Brattinger, S. Brenner,

M. Breunig, O. Bruder, A. Carstguson, V. Cejka, M. Christa, E. Cramer, M. Drexler, J. Friedenberger, P. Goldstein, R. Guimaraes, A. Hagenow, A. Hauber, D. Hausmann, K. Hertting, R. Hintze, W. Ito, A. Jabs, M. Junge, W. Jungmair, C. Kadel, Z. Kiraly, S. Kohler, B. Kraus, S. Loebis, B. Lutsyuk, H. Mahrholdt, S. Maier, G. Mentz, H. Mollinger, C. Morbach, Z. Moussaoui, C. Muller, H. Nagele, I. Neufeld, S. Neugebauer, P. Ons, K. Oppenlaender, L. Peters, C. Potolidis, W. Raut, W. Rieker, A. Rieser, S. Schellong, R. Schueler, I. Seifert, M. Specking, M. Speth-Nitschke, F. Stahl, A. Stief, D. Stierle, T. Stoerk, T. Twisselmann, I. Voigt, B. Voigts, M. Weisbach, C. Weiss, S. Wilke, A. Wolf, M. Wurdak, M. Zaczekiewicz, O. Zimmermann **India (2212*)**: A. Roy (National Leader), J. Abdullakutty, S. Asotra, S. Chandra, H. Chaturvedi, G. Chaudley, D. Desai, J. Georgi, R. Gupta, N. Jathappa, S. Karna, K. P Kumar, B. H. Lokesh, J. S. Makkar, B. Mohan, N. Naik, P. Negi, R. S. Rao, S. Seth, G. Sharma, S. Singh, M. A. Srilakshmi, R. Tandon, A. Tewari, K. Varghese, S. K. Verma, R. Yadav **Italy and Switzerland (577*)**: A. Maggioni (National Leader), E. Capati, A. Cecchi, A. Cherubini, M. Concilio, F. Cosmi, C. Crljenica, S. D'Orazio, G. M. Francese, A. Frisinghelli, M. Gnemmi, M. Gulizia, C. Marcassa, T. Moccetti, R. Nuti, F. Orso, M. Palvarini, E. Pasotti, G. Piccinni, M. Piepoli, M. Rossi, G. Russo, F. R. Scopigni, P. Temporelli, F. Venturi, A. Verde, G. Q Villani **Kenya (290*)**: G. Yonga (National Leader), F. Barasa, E. Mbugua, W. Nalwa **Mexico (51*)**: J. A. Magaña Serrano (National Leader), R. K. N. Carrasco, E. Castro-Montes, P. G. D. Flores, J. A. C Lopez, M. Silva, M. Vazquez **Mozambique (146*)**: A. Damasceno (National Leader) **Nepal (342*)**: S. Sharma (National Leader), Y. Bhatta, N. Bhurtyal, S. Gautam, T. Y. Ghising, V. Kattel, D. R. Mishra, A. Rai, R. Rana, R. Sapkota, D. Sharma, N. Shrestha, S. L. Shrestha, M. Subedi, R. Tamrakar, P. M. Tripathi **Nigeria (1290*)**: K. Karaye (National Leader), H. Abubakar, V. Ansa, N. Ishaq, A. Kabir, O. Ogah, H. Saidu **Pakistan (421*)**: K. Kazmi (National Leader), B. Ahmed, A. Artani, A. M. Kayani, A. Laghari, R. Munir **Philippines (130*)**: A. Dans (National Leader), J. Cruz, L. K. Evangelista, M. Mercado, D. Morales, D. Sulit, L. Tirador, C. Trompeta **Poland (708*)**: A. Budaj (National Leader), S. Anna, M. Bajer, J. Bednarski, A. Chmielinski, M. Ciuraj-Hanczarek, K. Cymerman, A. Czepiel, T. Czerski, D. Dabrowski, J. Gebalska, M. Gmytrasiewicz, J. Gniot, M. Grelak, U. Grochowicz, T. Imiela, M. Korol, C. Lewandowski, U. Matys, B. Mierzejewska, B. Miklaszewicz, E. Mirek-Bryniarska, A. Nowak, M. Owsiak, Ł. Pastwa, J. Patryn, E. Piechocka, M. Piepiorka, R. Sicursa, M. Skorski, M. Solkiewicz, A. Stasiwski, W. Sudnik, M. Wujkowski **Portugal (145*)**: J. Silva Cardoso (National Leader), A. Baptista, J. Cabral, A. Cavalheiro, C. Ferreira, A. R. Godinho, L. Marques, A. Meto, E. Moreira, D. Seabra, H. Vasconcelos, A. Andrade, I. Moreira **Russia (602*)**: N. Pogosova (National Leader), S. Isakova, S. Ivan, N. Kovalkova, D. Panov, A. Salbieva, Z. Sergey, Y. Yufereva, A. Yusubova, V. Gafarov, I. Osipova, T. Tatiana Poponina, Y. Pozdnyakov, Z. Sizova **Saudi Arabia (903*)**: K. Alhabib (National Leader), S. Alasmari, K. Alghalayini, M. Elreadaisy, W. A. Habeeb, Y. Kassim, A. Kinsara, S. Lawand, S. Monem, U. Ullah Jan, M. Zeyad **South Africa (111*)**: K. Sliwa (National Leader), M. De Andrade, J. Fortein, K. Moeketsi, P. A. Moses, M. J. Mphahlele, M. Ntsekhe, N. T. Poswa, A. Ratsela, B. M. Thomas, K. M. Thomas, C. Viljoen, A. Xana, Y. S. I. N. Yiga **Spain (572*)**: A. Bayes-Genis (National Leader), L. C. Belarte Tornero, S. R. Bustillo, E. B. Caballero, J. C. Castillo, R. De La Espriella, I. P. Garrido Bravo, J. Lopez, D. Mallon, M. C. Marcos, G. Minana, M. J. Paniagua Martin, F. Perez, J. L. Roses, E. Santiago, I. Zegri Reiriz, **Sudan (504*)**: A. ElSayed (National Leader) **Sweden and Iceland (486*)**: L. Lund (National Leader), S. Bandh, N. Z Floderer, V. Goloskokova, C. Hage, C.-J. Lindholm, J. Lindström, I. Lönnberg, E. Marosi, D. Nurring, J. Sandstrom, T. Thorvaldsen, J. Thulin, K. Vargova **Tanzania (778*)**: A. Makubi (National Leader), B. Alphonse, E. Alphonse, P. Chillo, N. Duma, R. Fabiano, M. Janabi, F. Kalokola, S. Kanenda, J. Kataraihya, P. Kisenge, J. R. Meda, R. Mutagayma, B. Mwakalukwa, R. Vogt, H. Vogt **Turkey (493*)**: A. Temizhan (National Leader), D. R. Acar, Y. Çavuşoğlu, A. Celik, H. E. O. Cetin, A. A. Erenoglu, S. Gulec, N. Ozyuncu, M. B. Yilmaz **Uganda (644*)**: C. Mondo (National Leader), C. Lugero, Z. W. Zhu, **Ukraine (505*)**: A. Parkhomenko (National Leader), S. Andriyevska, L. Chernachuk, S. Fedorov, E. Filatova, I. Kozlova, N. Lipkan, K. Lobanova, S. Oleksandr, V. Pidlisna, V. Plohotnyk, S. Shvaykin, K. Valentyna, O. Verbovska, L. Vereschuk, L. Voronkov, Y. Zalisna, Y. Zalizna, N. Zenchenco **United Arab Emirates (198*)**: A. Almulla (National Leader), M. Elbanna, G. Gabra, I. Hamour, M. Khalil, B. Mohamed, J.

K. Praveen, H. Sabbour, M. Soliman, ***United Kingdom and Ireland (322*)***: M. O'Donnell (National Leader), C. Arden, J. Barton, P. Donnelly, T. Edwards, J. Foster, A. Fuat, A. Jackson, Z. Jan, P. Jhund, B. Mcadam, N. McAleavy, A. Moriarty, A. Murphy, C. Orr, F. Witherow ***United States of America (783*)***: K. Branch and J. Probstfield (National Leaders), F. Adler, S. Airhart, M. Aldridge, R. Arimie, M. Arnold, D. Brautigam, K. Breathett, N. Christian, A. Desai, M. Friedman, H. Gaggin, C. Galvin, R. Gopalan, T. Gorman, M. Gulati, M. Hutchinson, N. Ibrahim, M. Jones, E. Juneman, T. Kitchen, W. J. Kostis, K. Lotun, V. Malhotra, K. Maurice, R. Mehta, M. A. Meier, M. Meirer, A. E. Moreyra, S. Murthy, R. V. Patak, I. Piña, R. Shetty, N. K. Sweitzer, J. Tauras, S. Thew, J. Vivian, M. Wagmeister, S. Westfall, D. Whellan