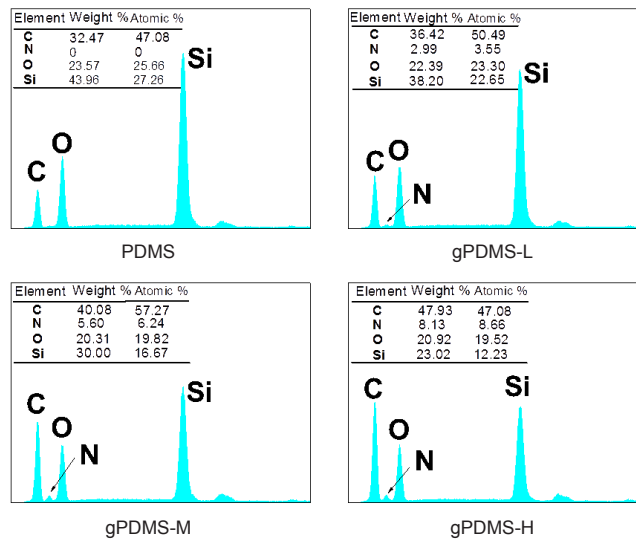
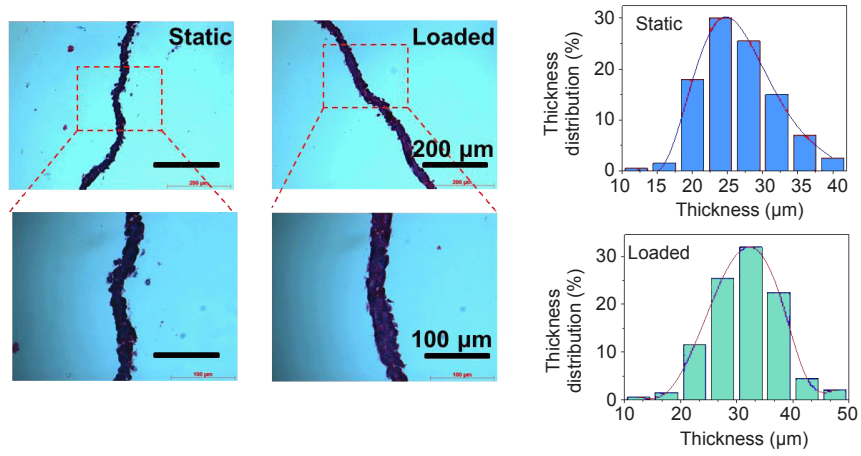


Additional Figure 1. Effect of NIPAAm monomer concentration, polymerization temperature, polymerization time and distance from UV source on grafting yield of PDMS-g-PNIPAAm surface. Weight ratio of nitrogen atoms signify PNIPAAm grafting yield. NIPAAm: poly(N-isopropyl acrylamide); UV: ultraviolet.



Additional Figure 2. Energy dispersion spectrum of PDMS, gPDMS-L, gPDMS-M and gPDMS-H substrates. gPDMS-L, gPDMS-M and gPDMS-H indicate PDMS-g-PNIPAAm substrate with low, medium and high grafting yield, respectively. PDMS: poly(dimethylsiloxane).



Additional Figure 3. Masson staining of cell sheet cross-sections and thickness distribution of cell sheet obtained under static or loaded conditions. Scale bars: 200 μm (upper), 100 μm (lower).