

Supporting Information

***N*-Arylated Oxathiazinane Heterocycles Are Convenient Synthons For 1,3-Amino Ethers and 1,3-Amino Thioethers**

Dr. Anand H. Shinde†, Dr. Someshwar Nagamalla†, Professor Shyam Sathyamoorthi*

† = Equal contribution

Department of Medicinal Chemistry, University of Kansas, Lawrence, KS, USA

Table 1, Product Entry 1- Spectra in CDCl₃

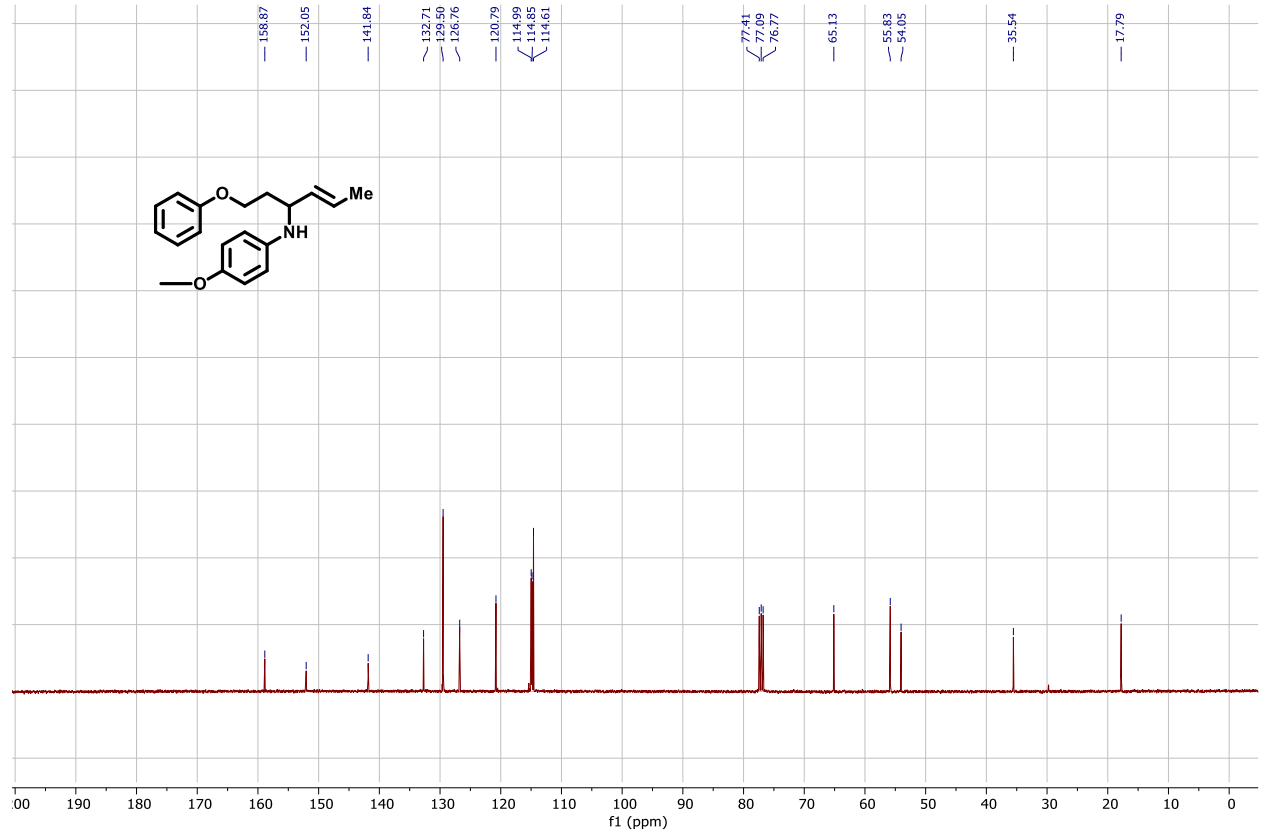
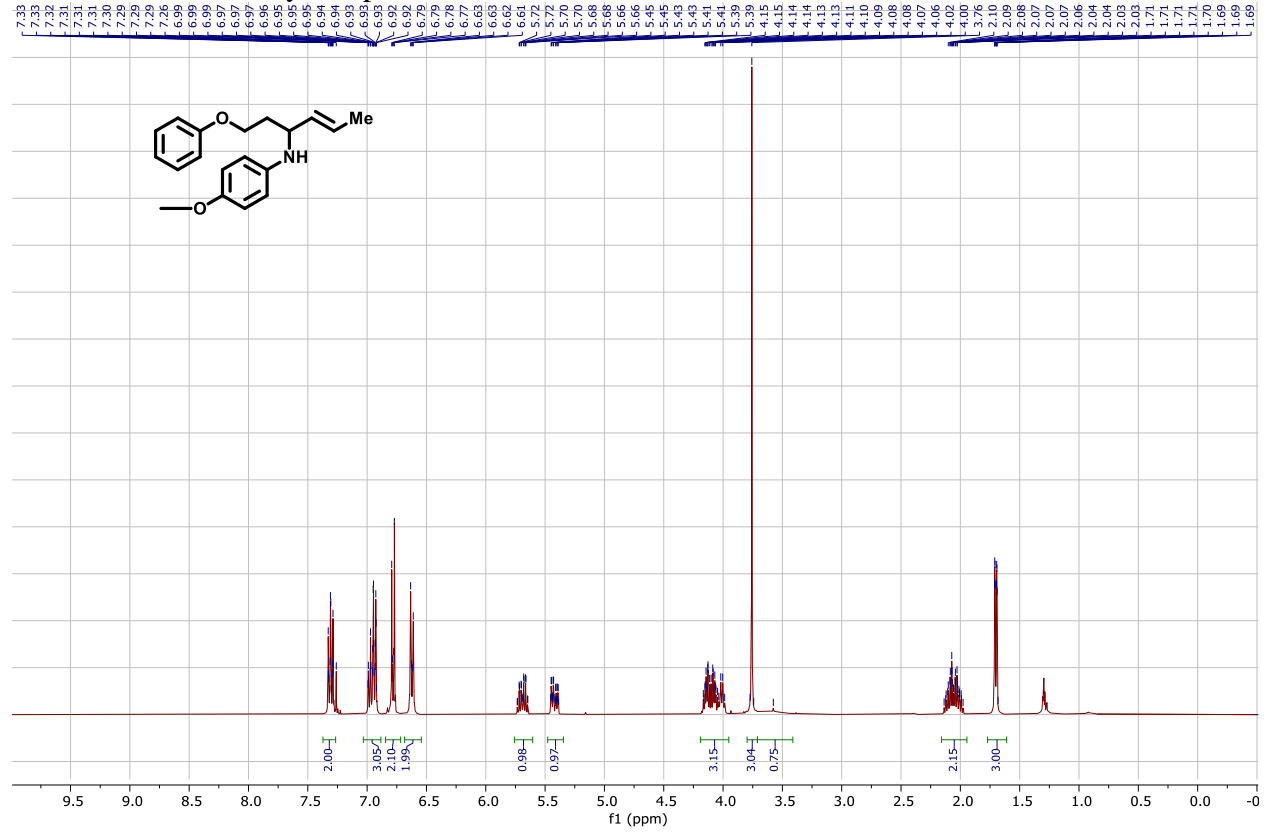


Table 1, Product Entry 2- Spectra in CDCl₃

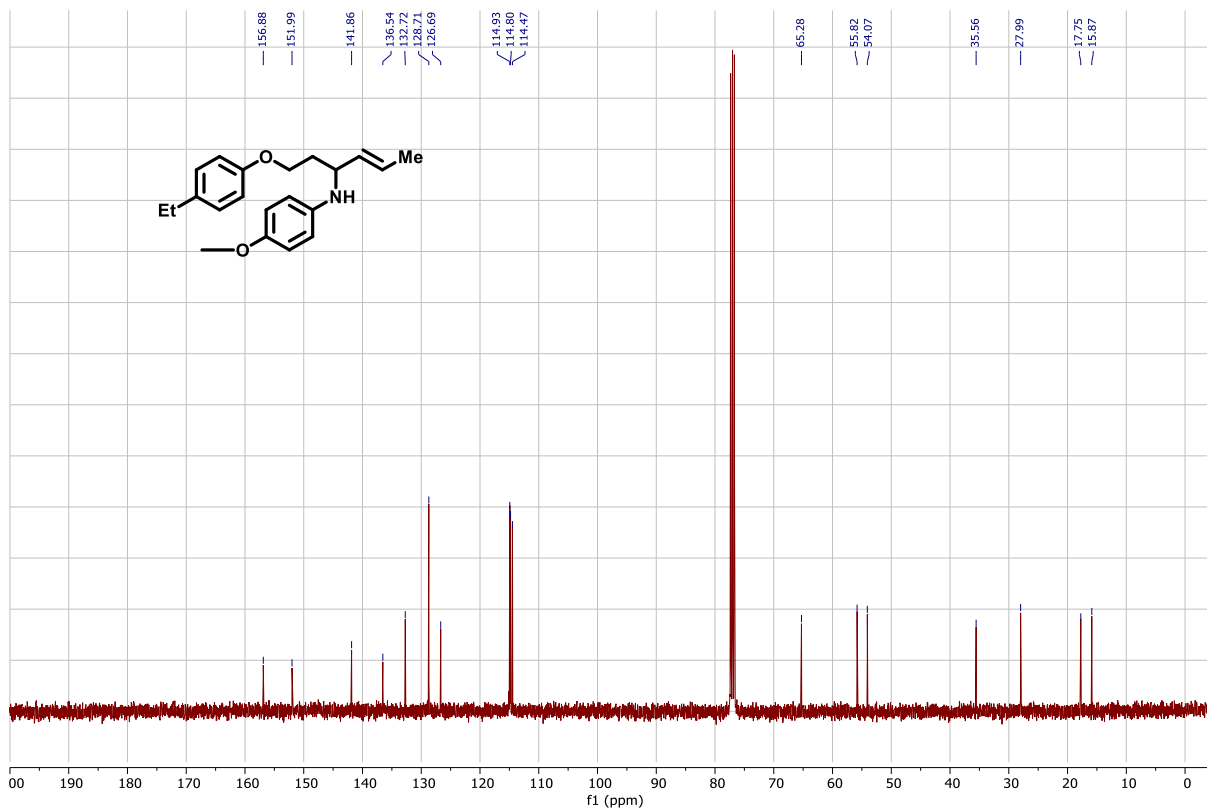
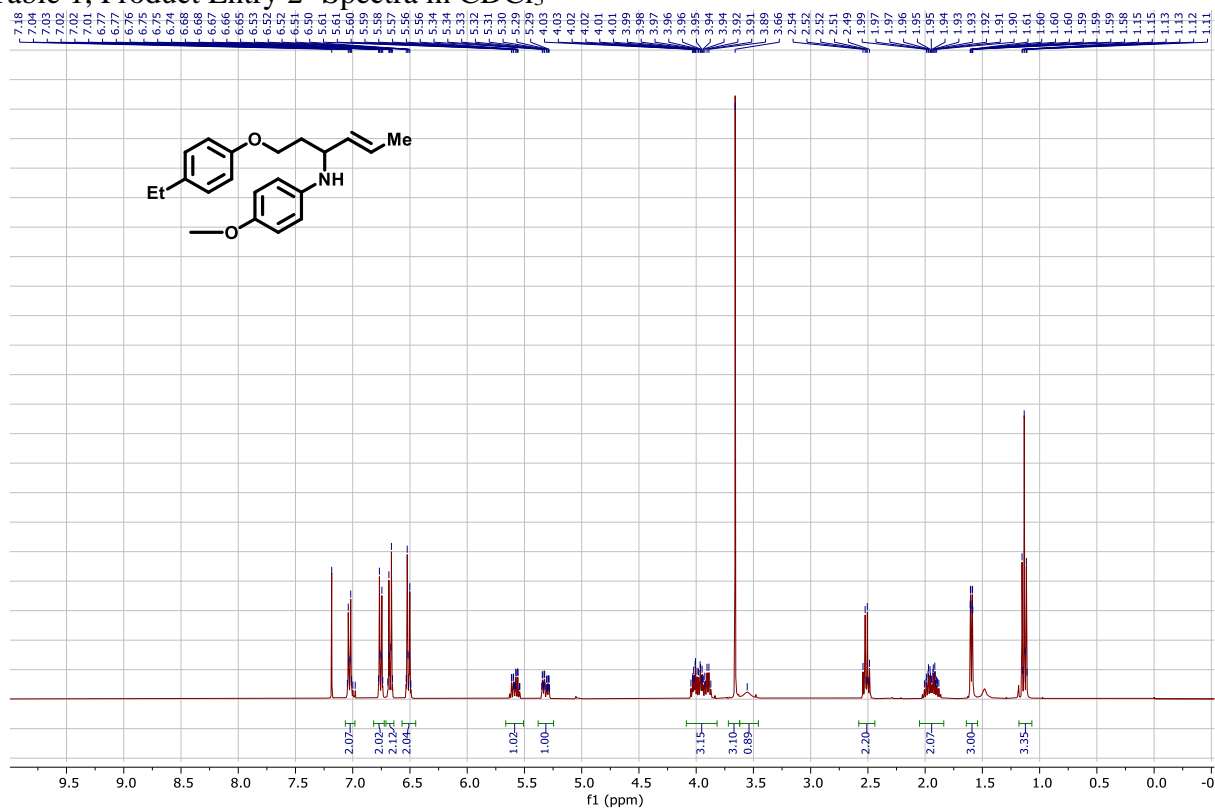


Table 1, Product Entry 3- Spectra in CDCl₃

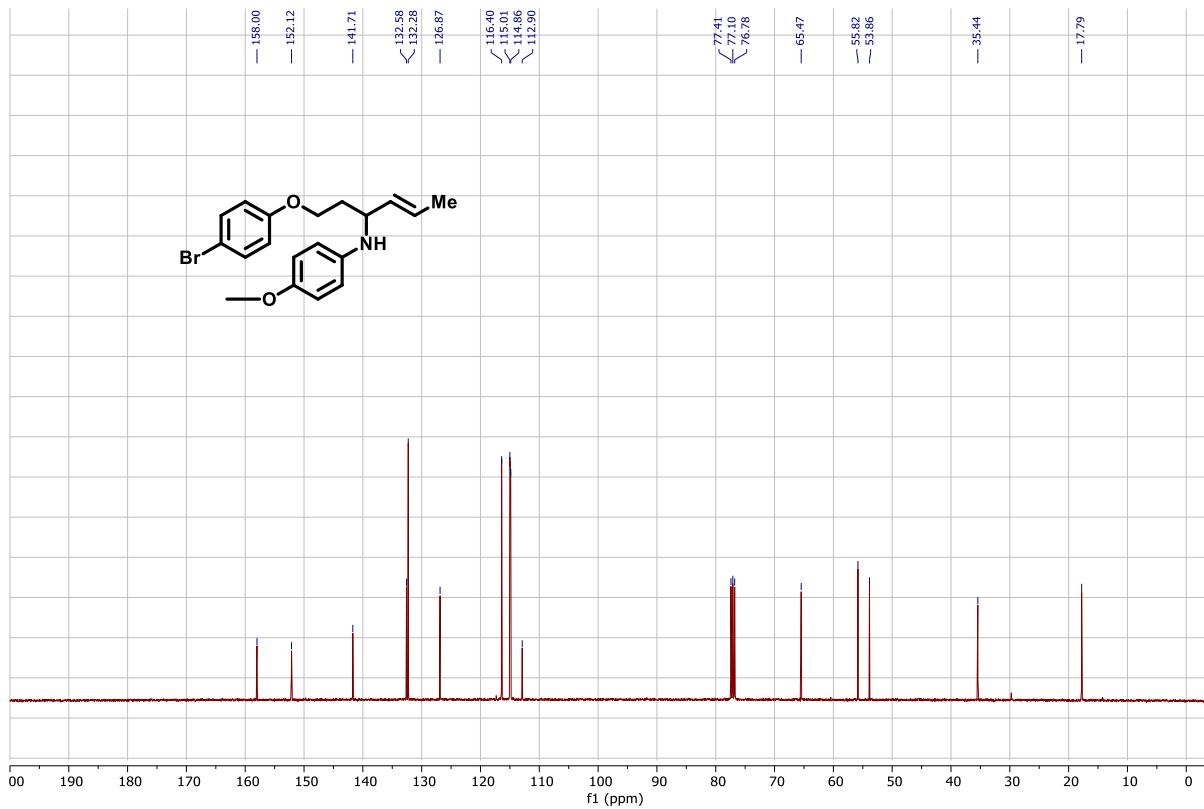
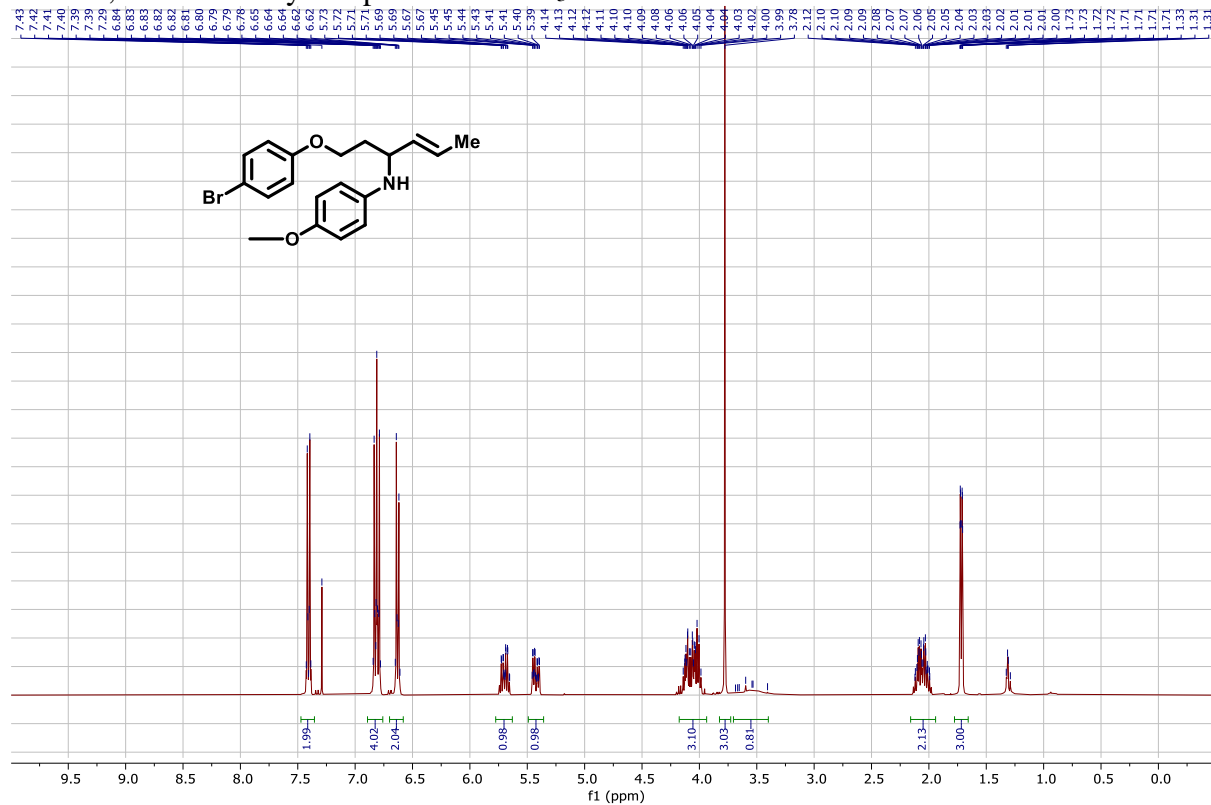


Table 1, Product Entry 4- Spectra in CDCl₃

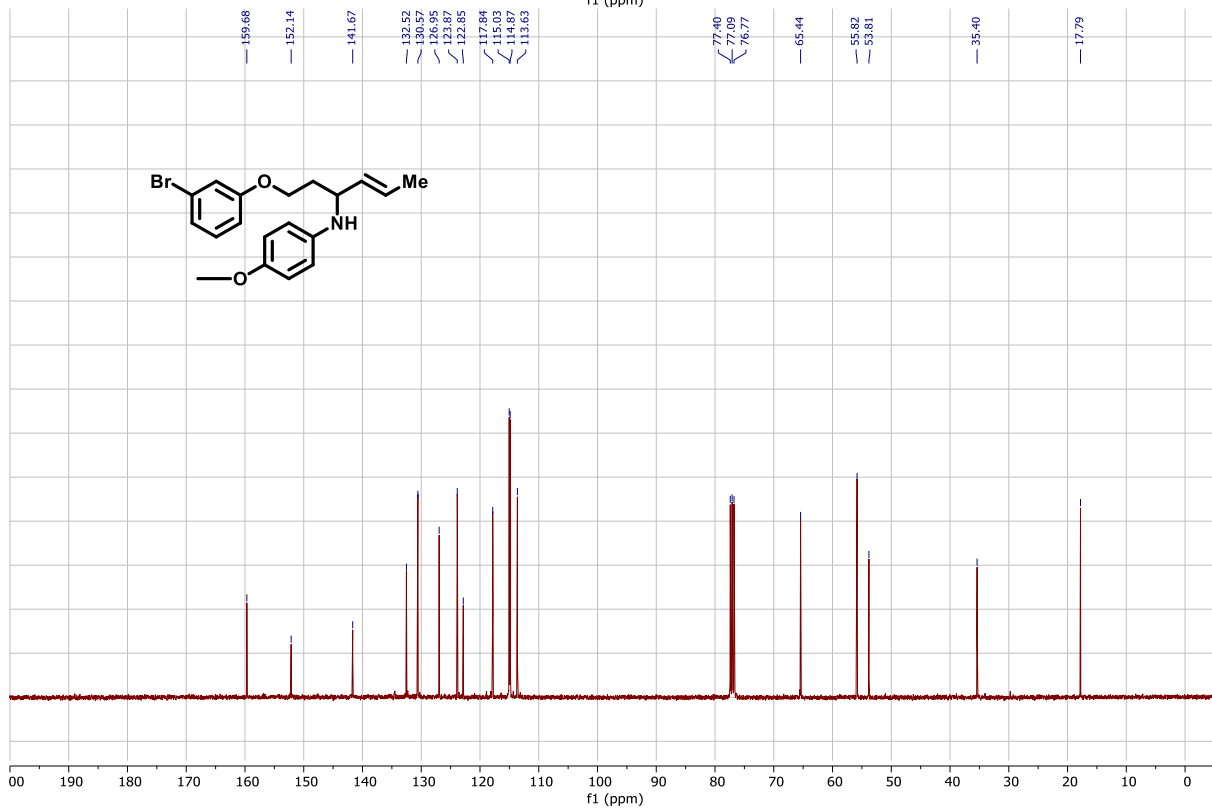
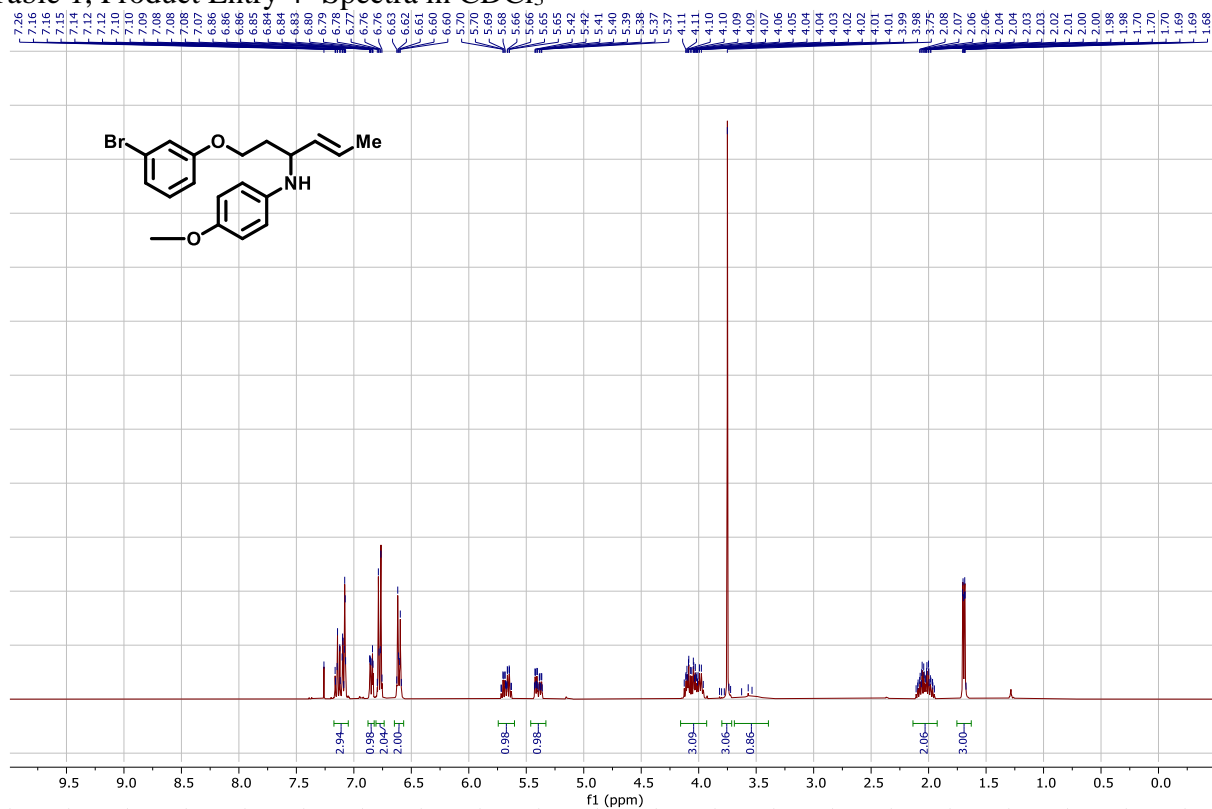


Table 1, Product Entry 6- Spectra in CDCl₃

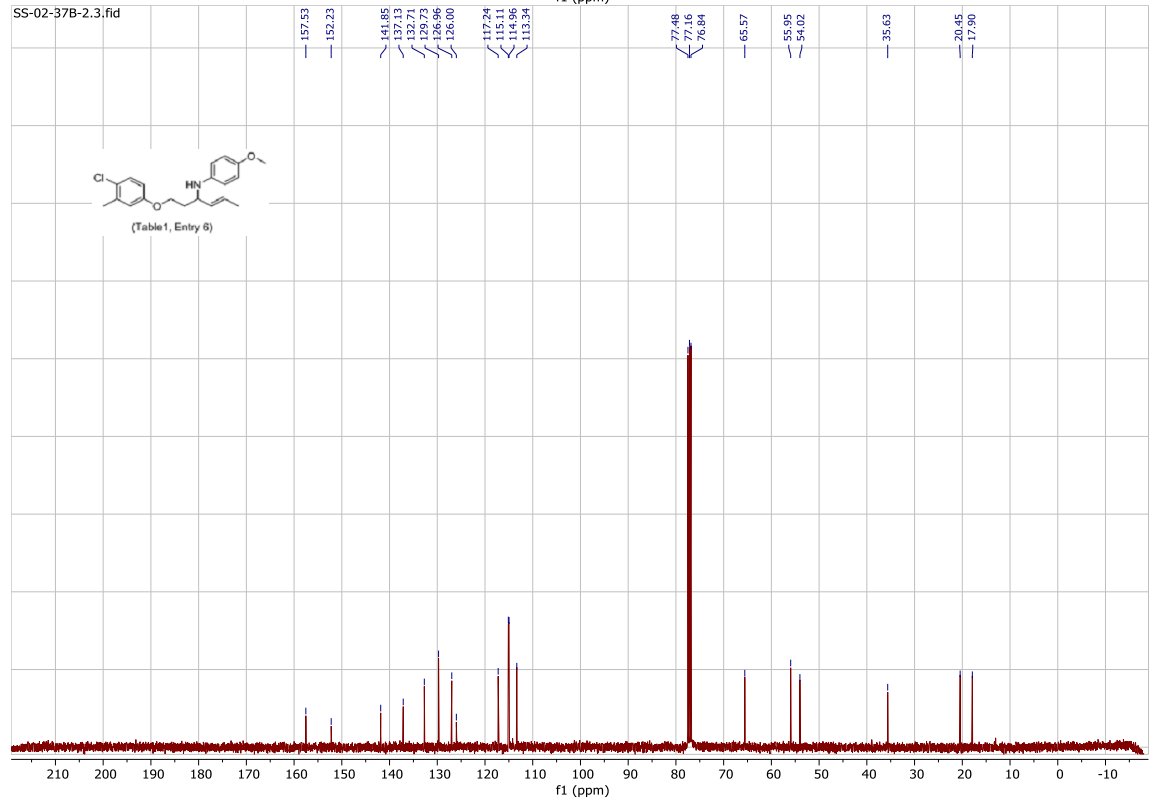
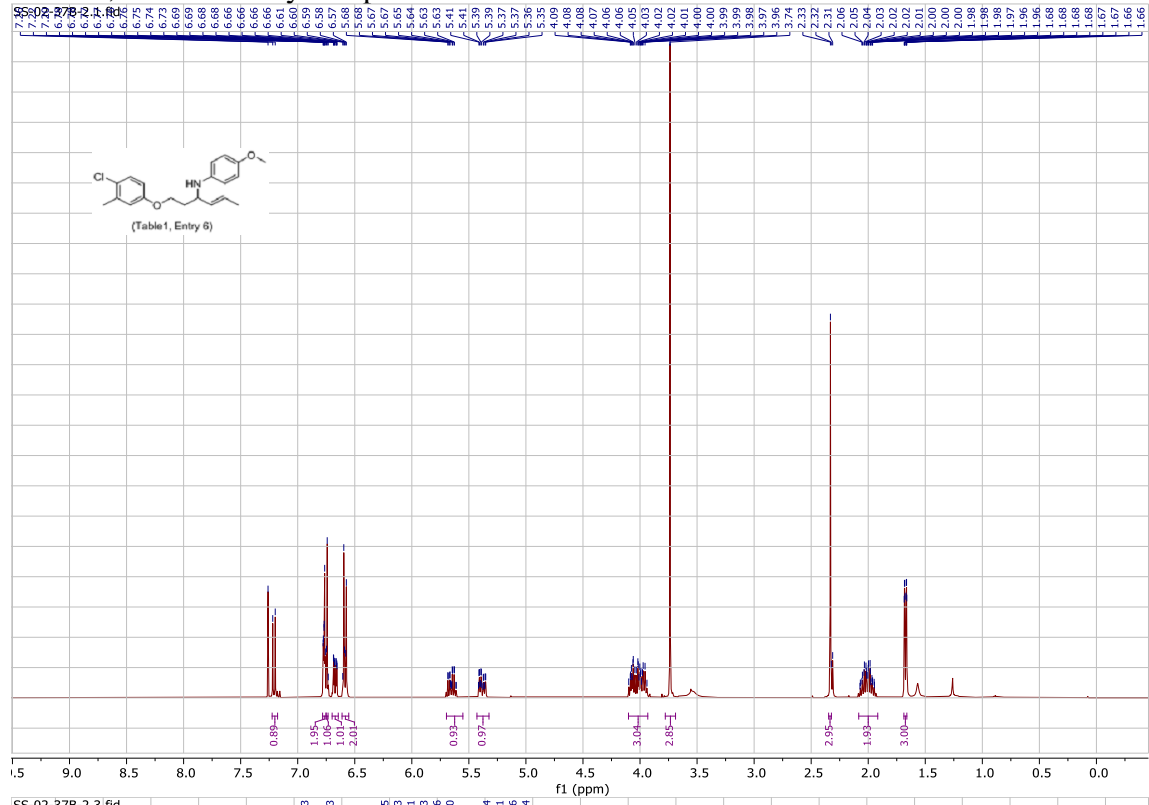


Table 1, Product Entry 7- Spectra in CDCl₃

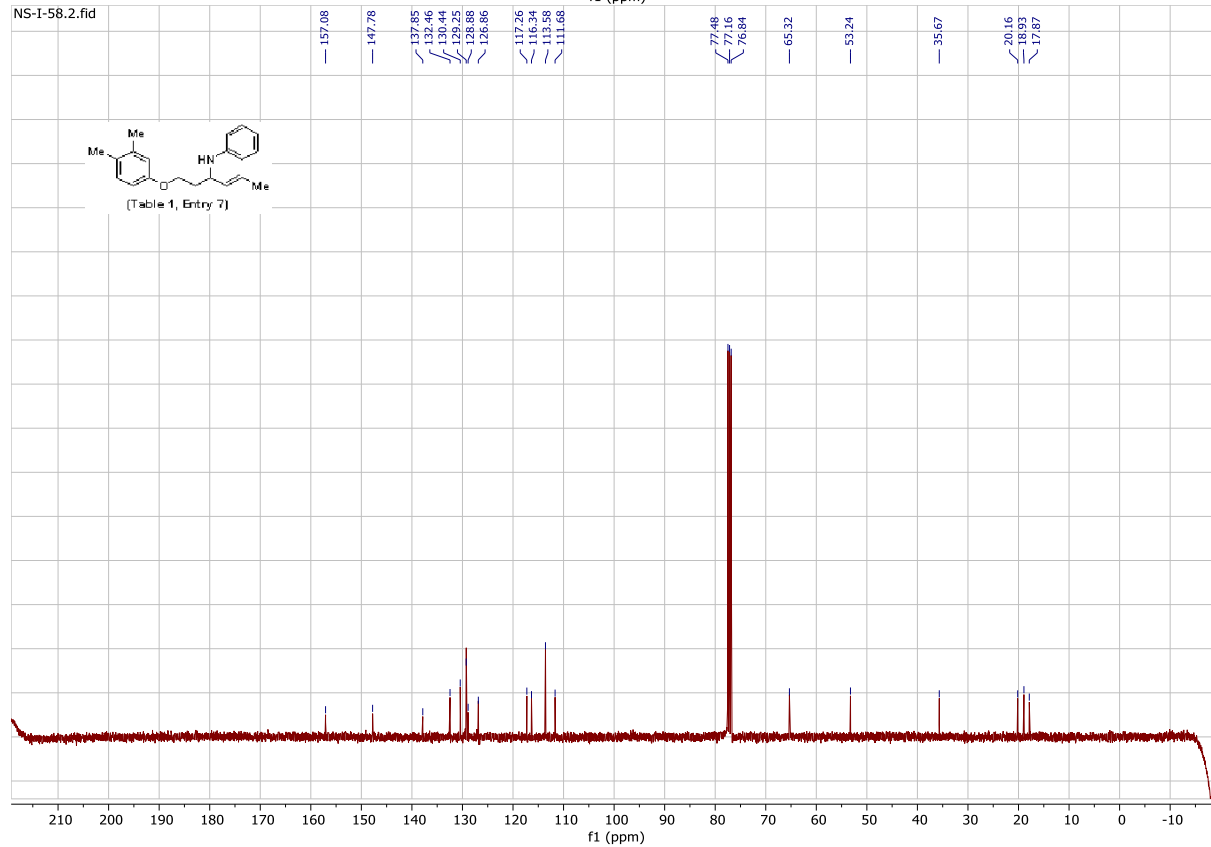
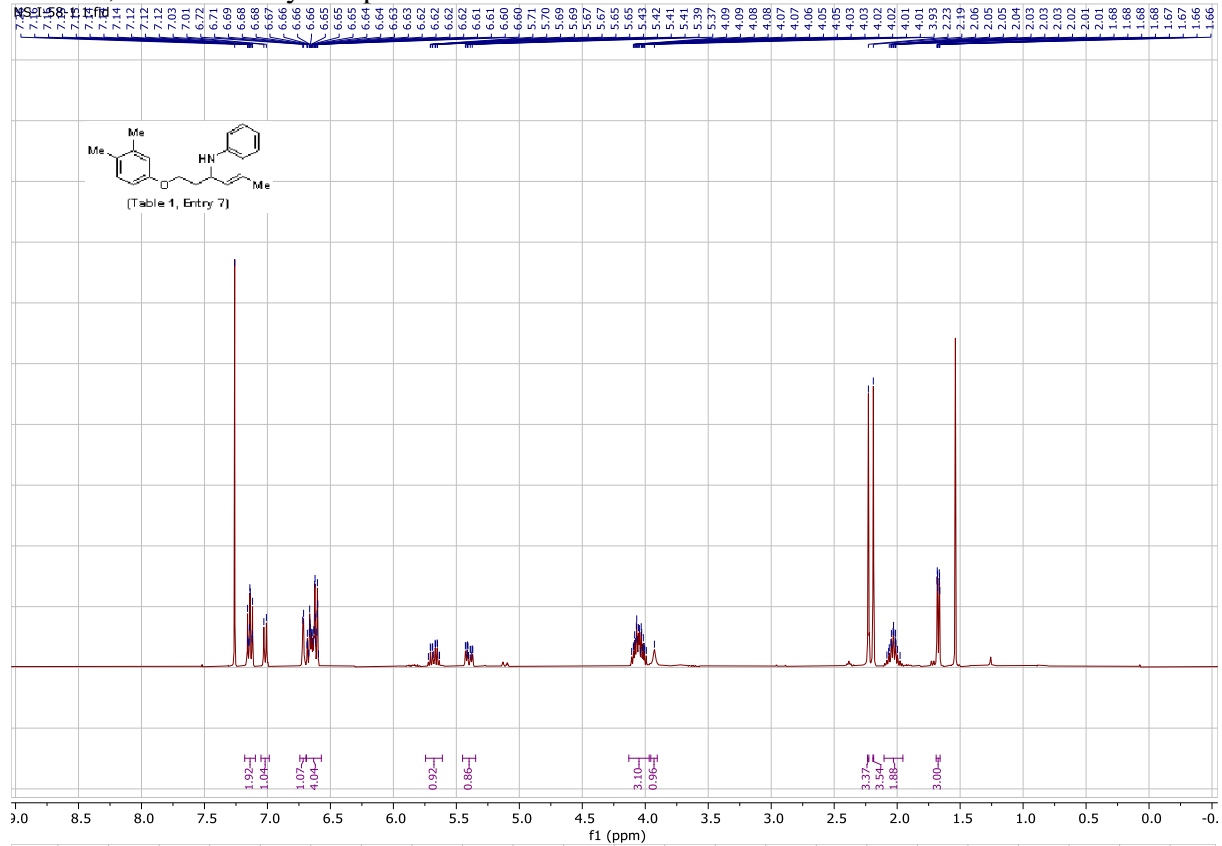


Table 1, Product Entry 8- Spectra in CDCl₃

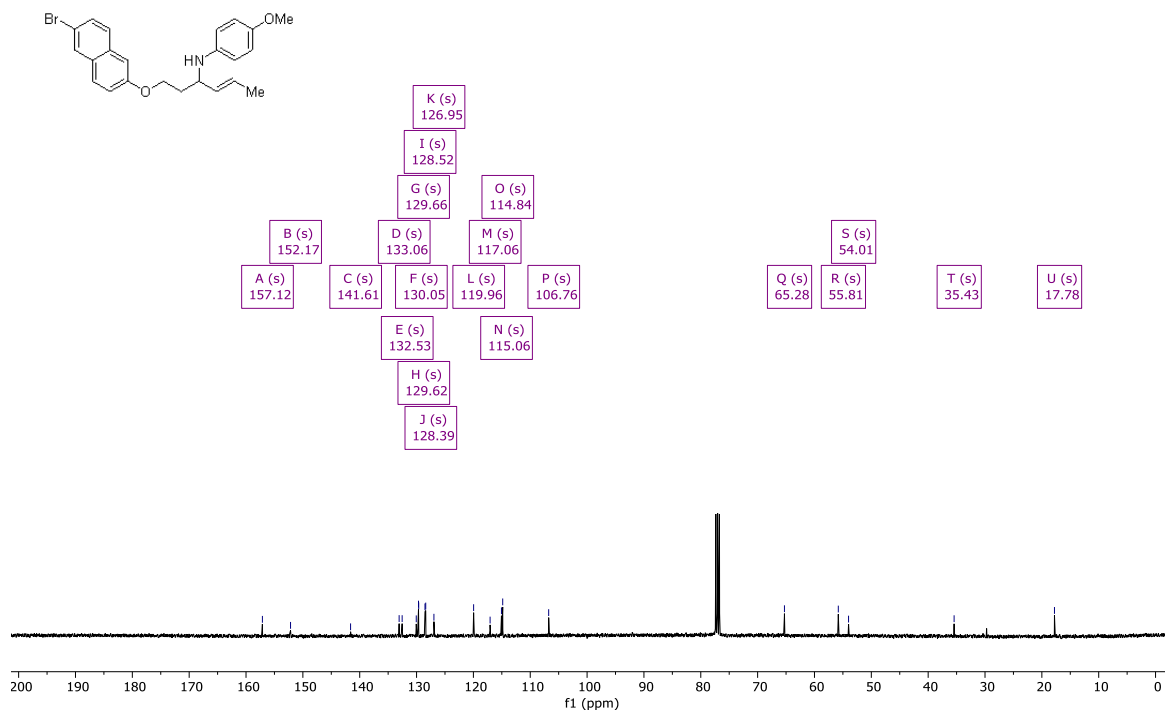
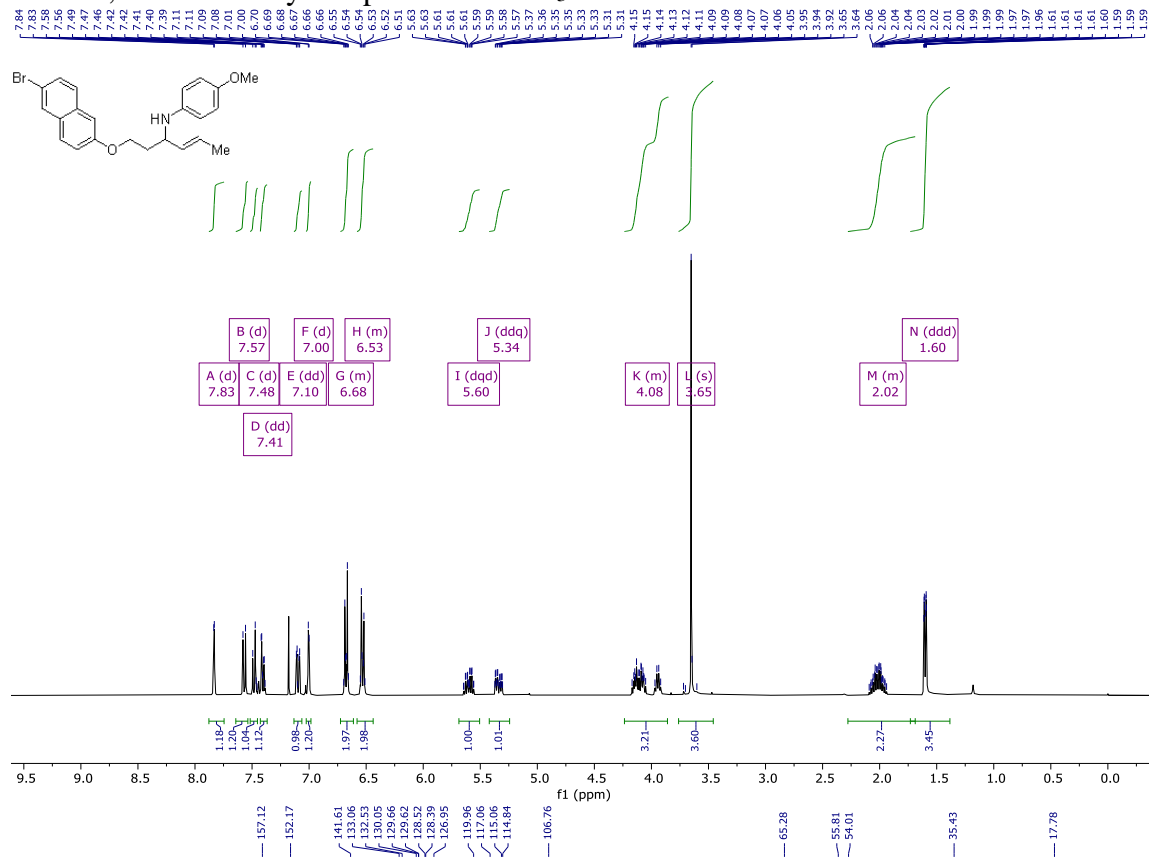


Table 1, Product Entry 9- Spectra in CDCl₃

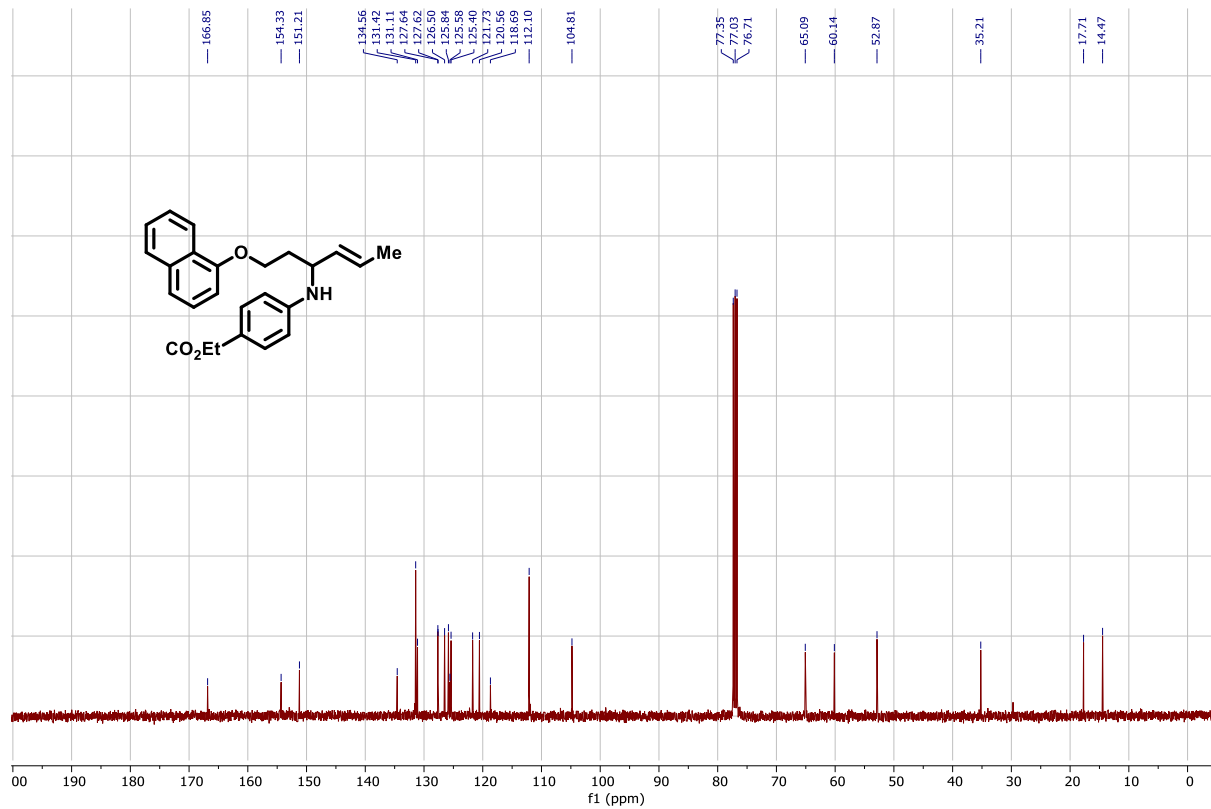
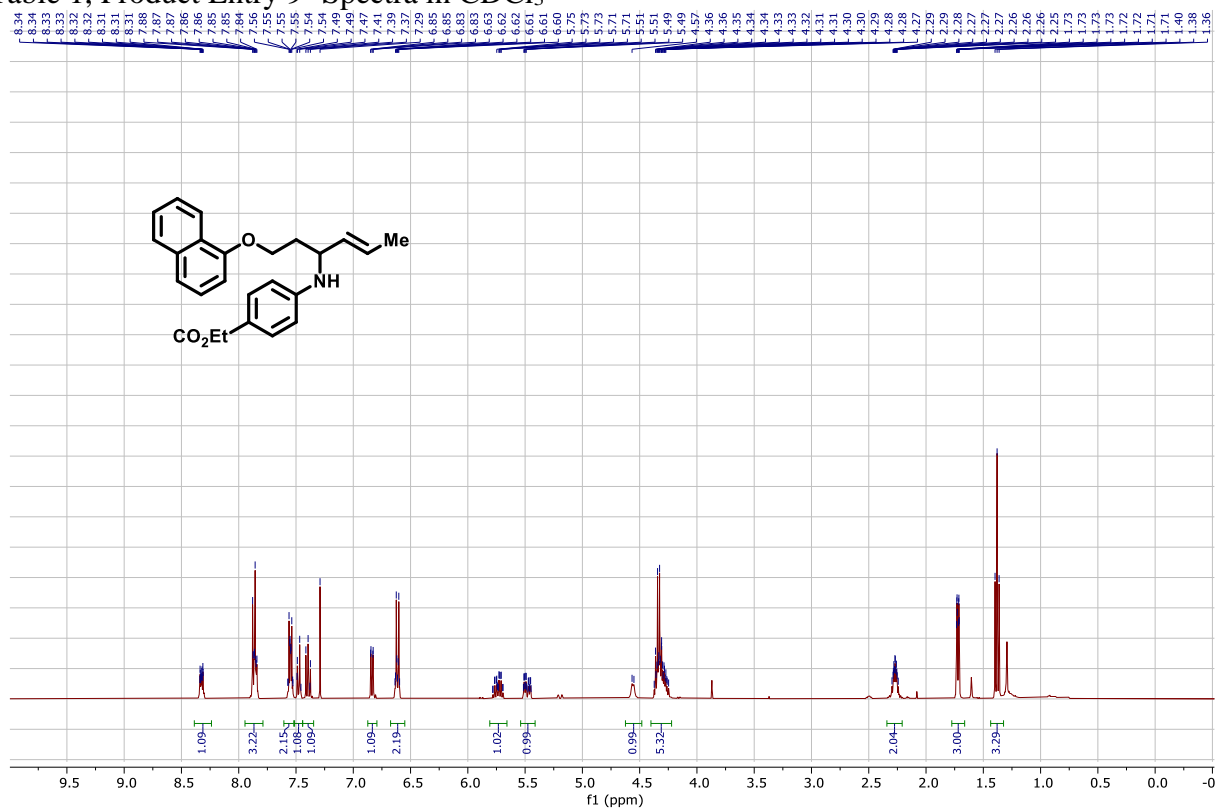


Table 1, Product Entry 10- Spectra in CDCl₃

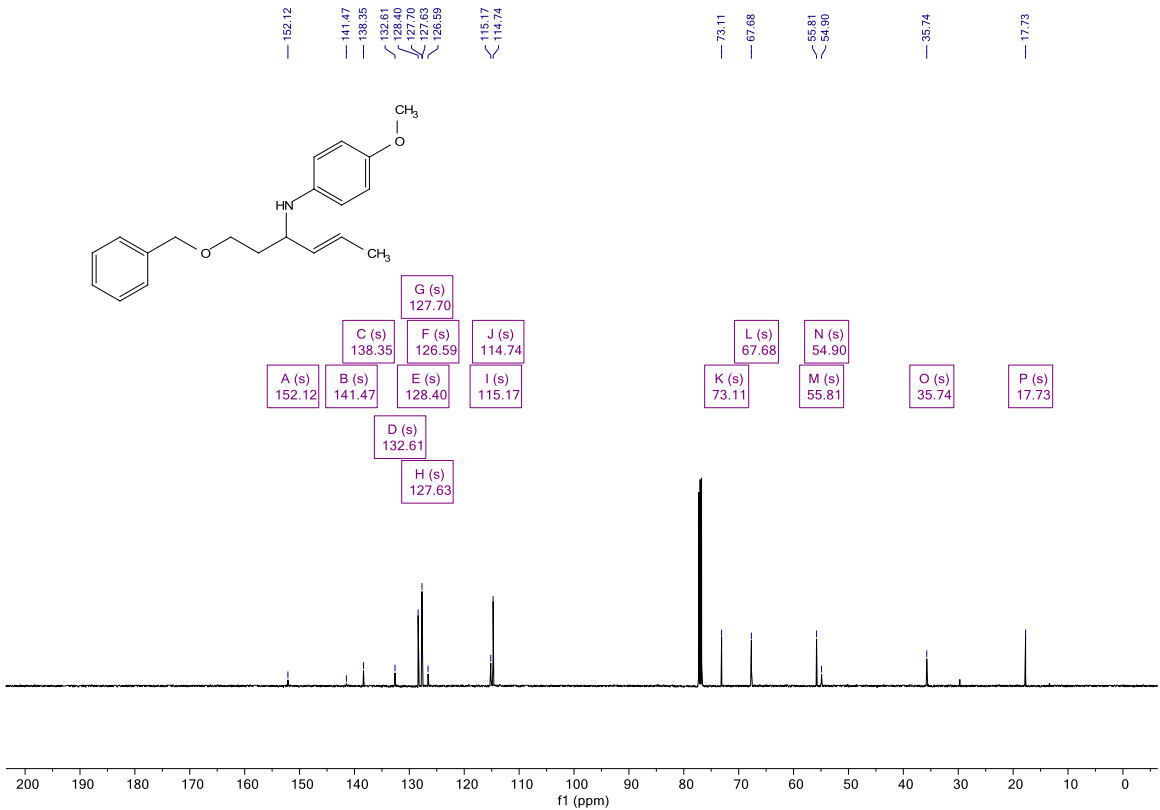
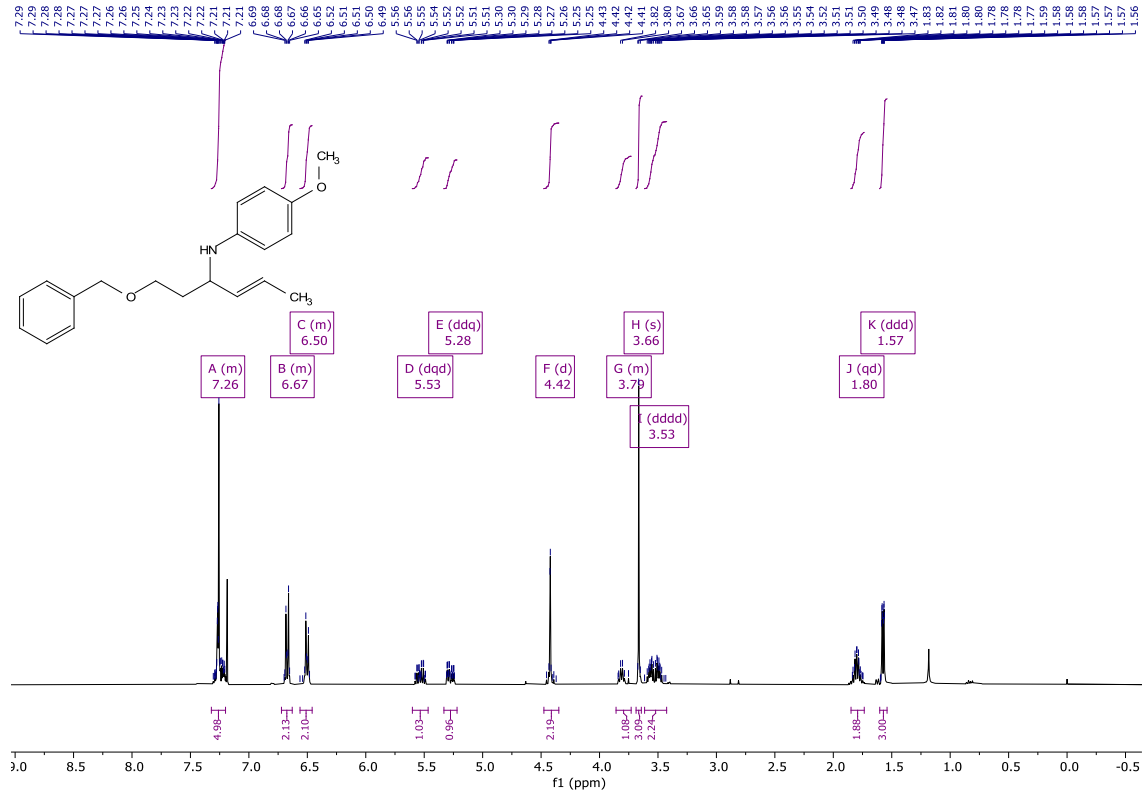


Table 1, Product Entry 11- Spectra in CDCl₃

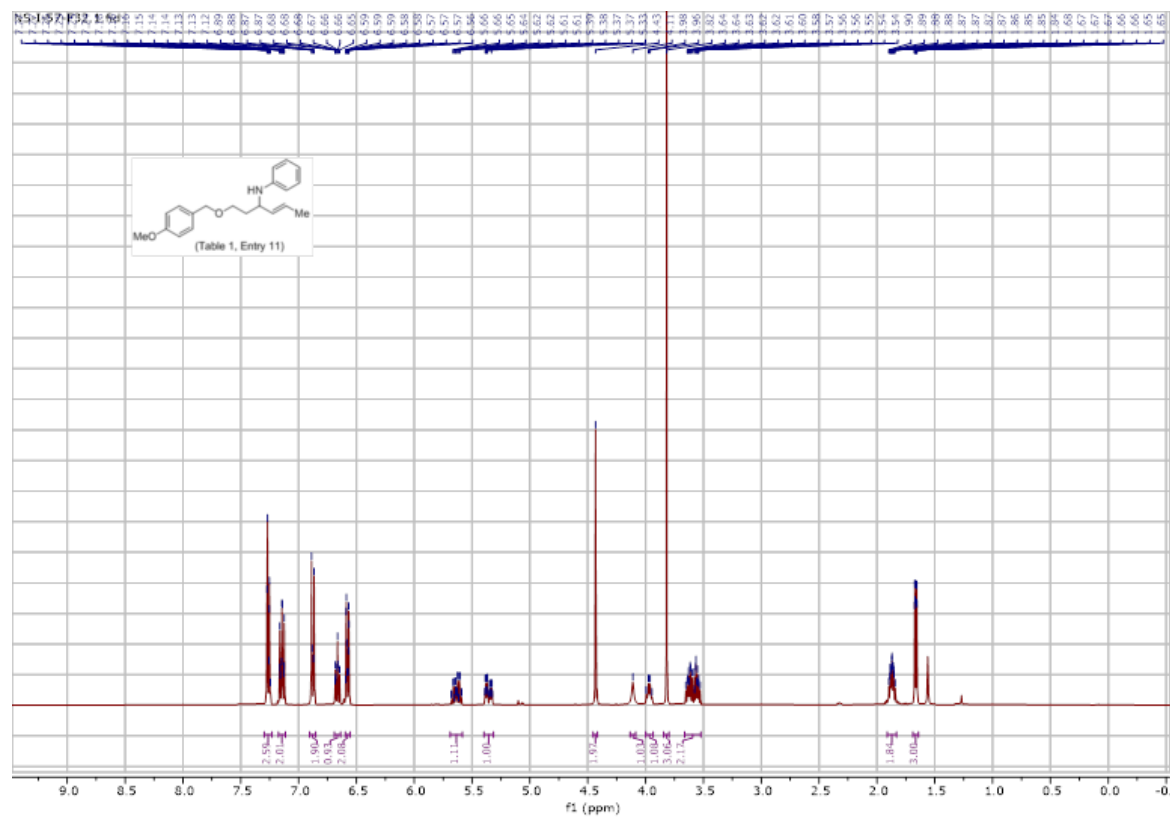
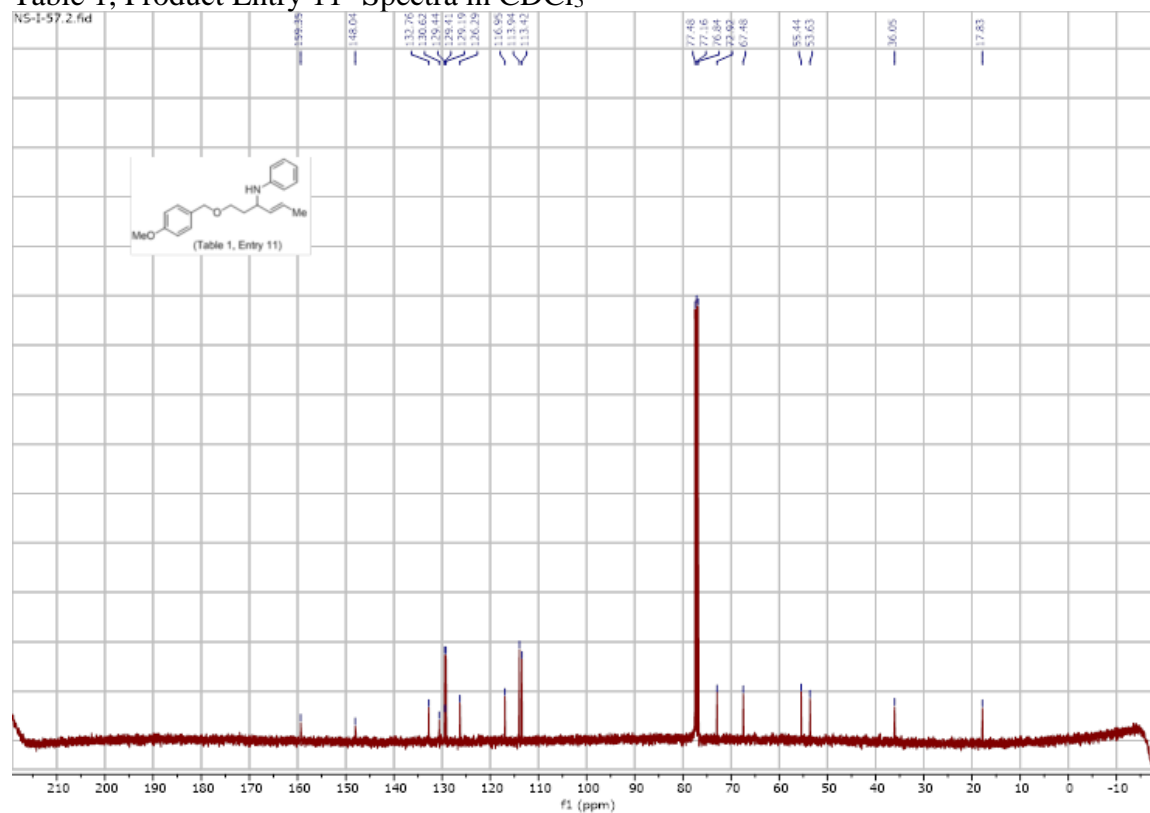


Table 1, Product Entry 12- Spectra in CDCl₃

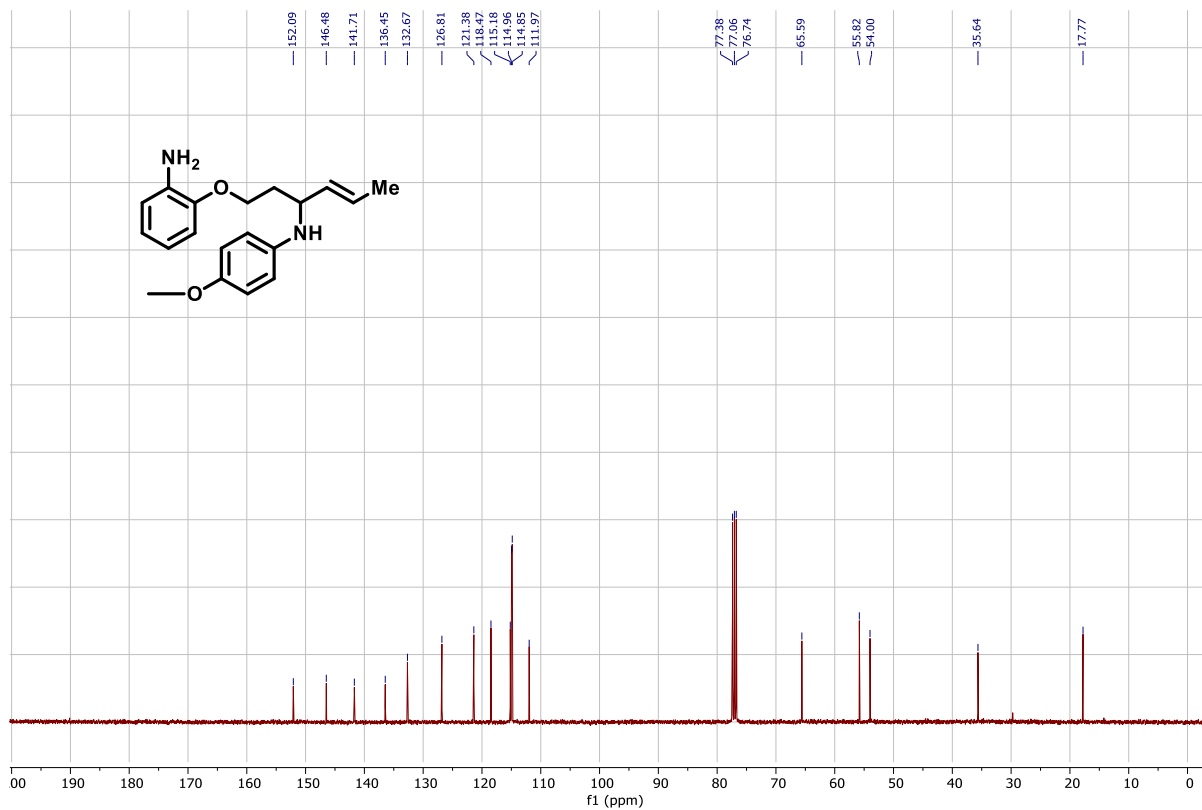
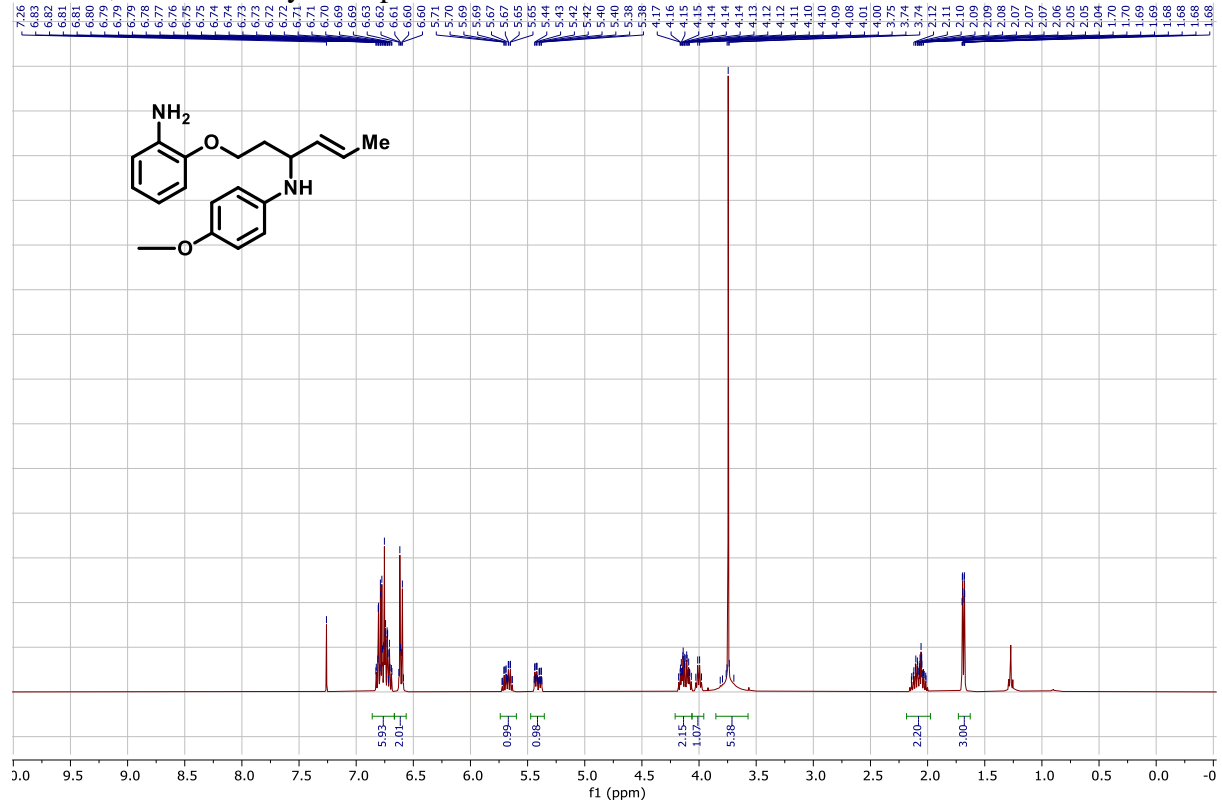


Table 1, Product Entry 13- Spectra in CDCl₃

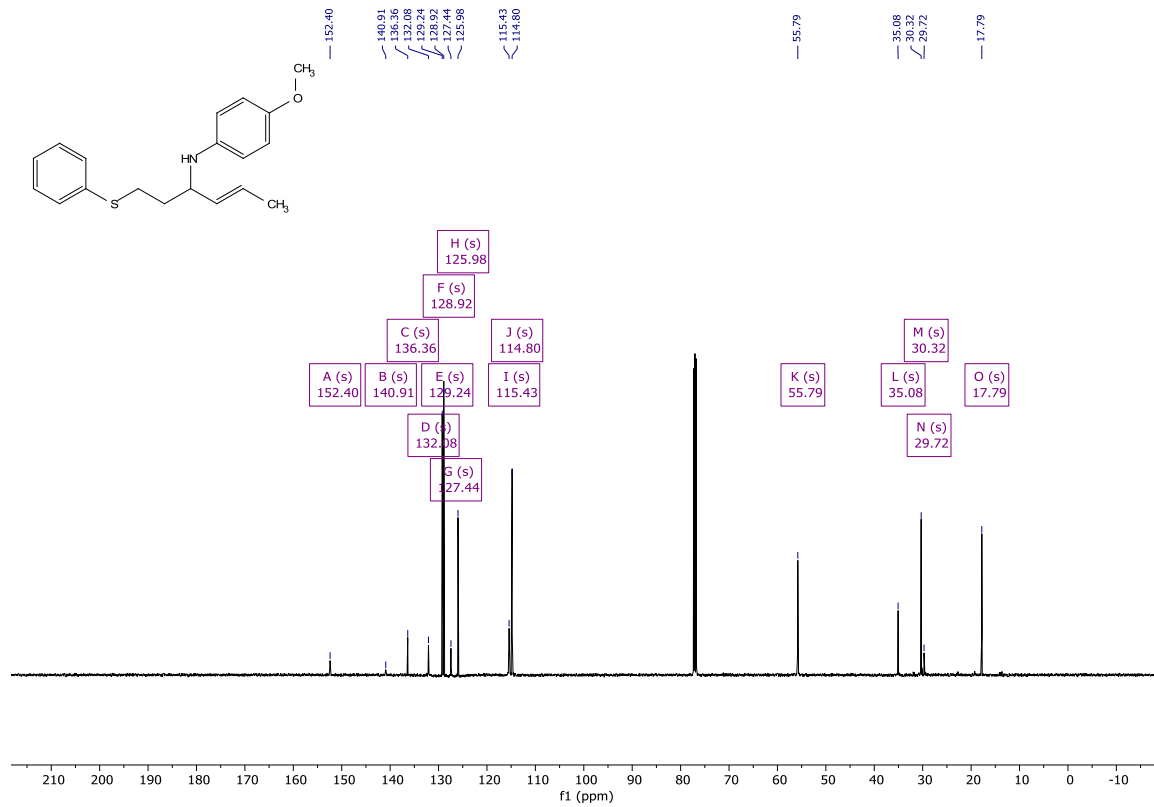
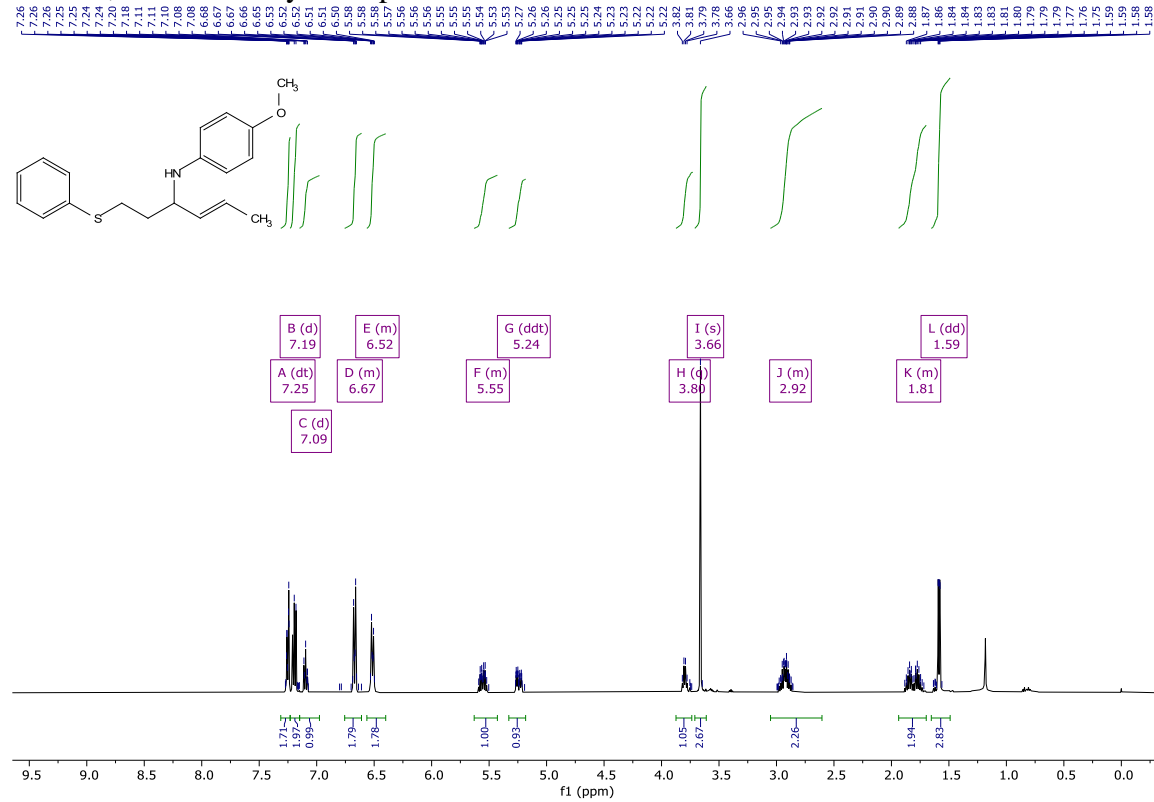


Table 1, Product Entry 14-Spectra in CDCl₃

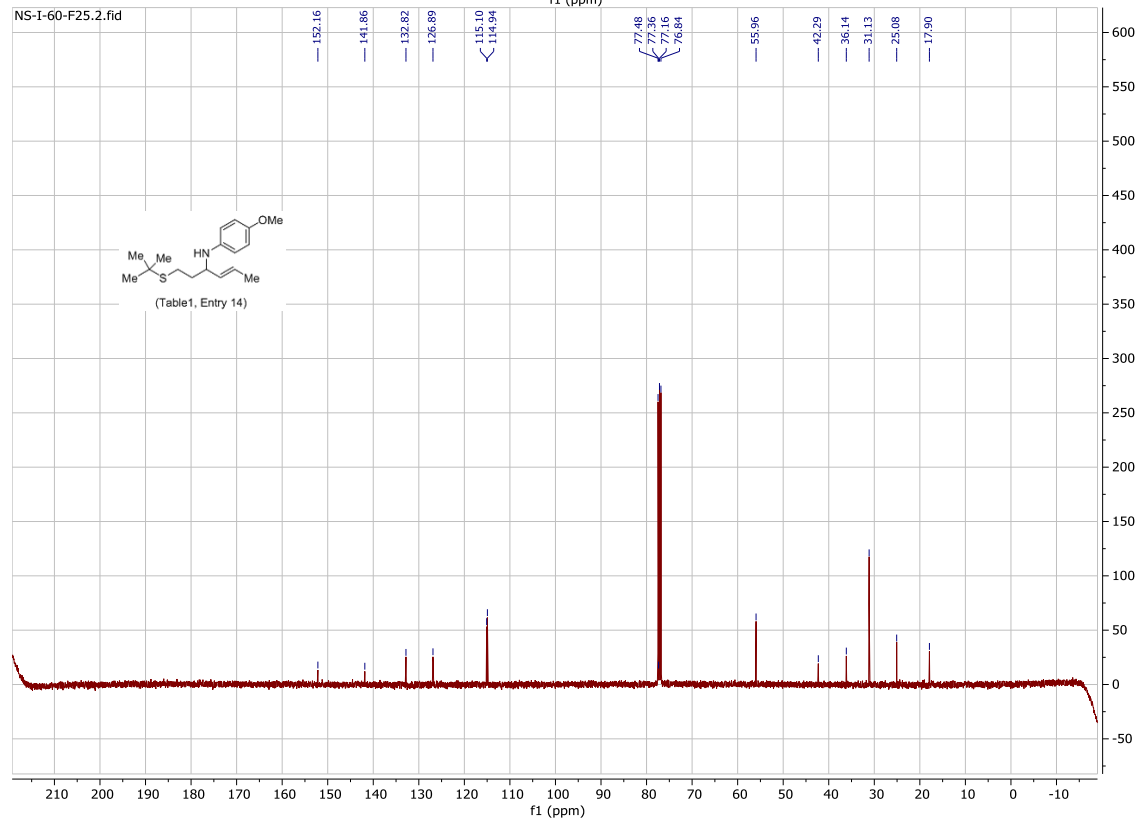
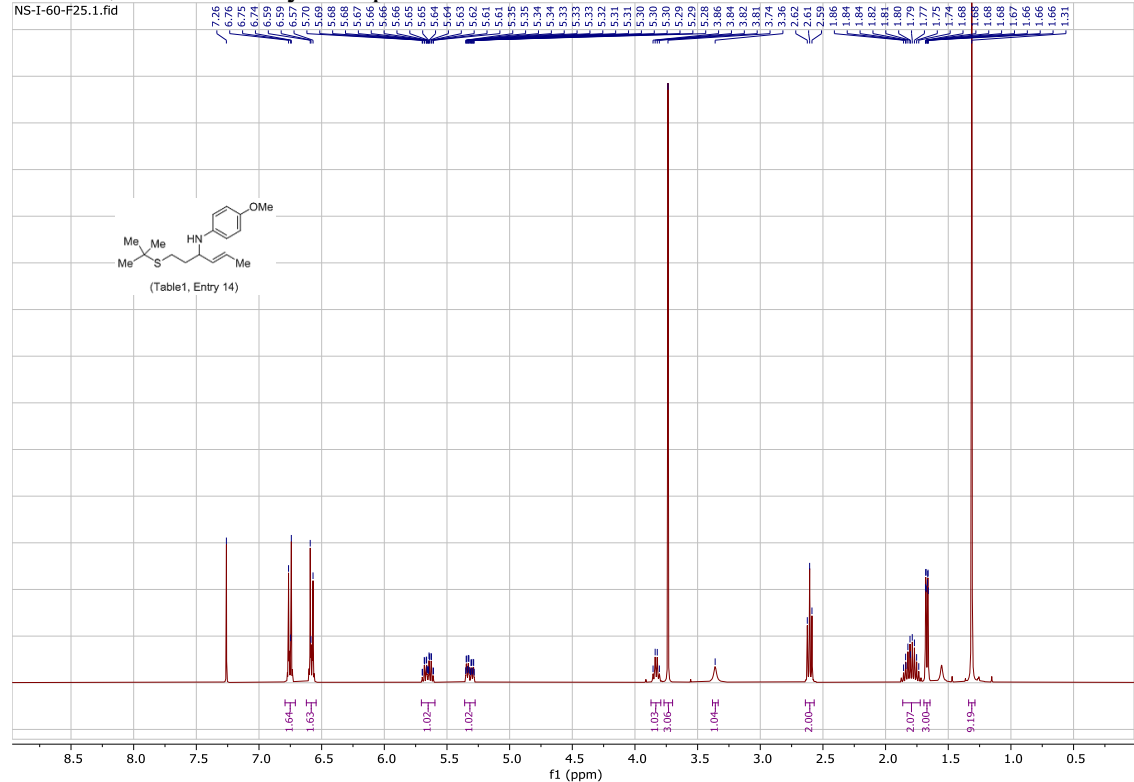
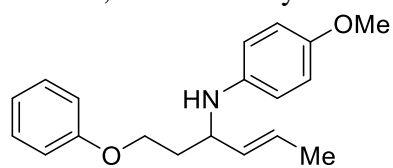


Table 1, Product Entry 1

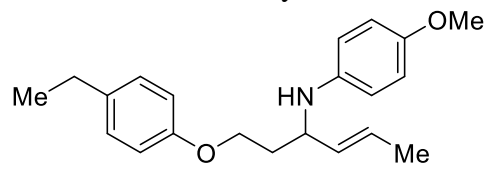


L0302028 24 (2.477) Cm ((12:14+24:33)-1:6)

1: TOF MS ES+
6.75e4



Table 1, Product Entry 2

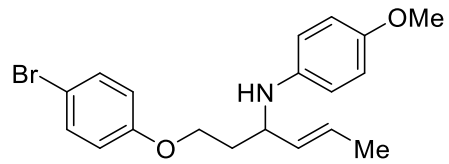


8, AHS-01-108A, in MeOH
L0302027 13 (1.376) Cm (10:13)

1: TOF MS ES+
1.36e3



Table 1, Product Entry 3



5, AHS-01-108BA, in MeOH

L0302021 22 (2.269) Cm ((7:14+22:33)-1:6)

1: TOF MS ES+
3.21e4

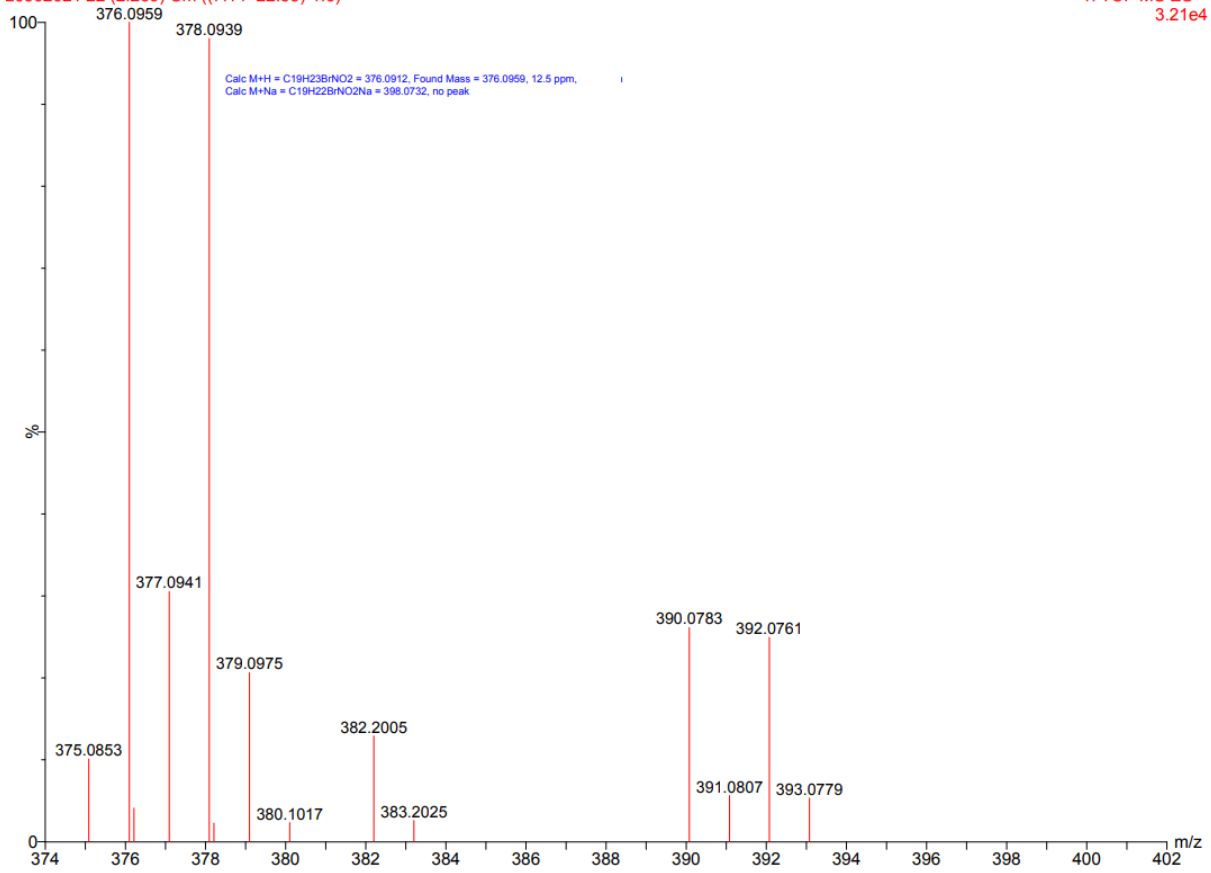
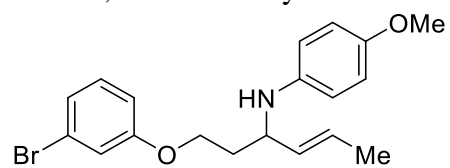


Table 1, Product Entry 4



10, AHS-01-116, in MeOH

L0302029 23 (2.410) Cm ((12:14+23:33)-1:6)

1: TOF MS ES+
5.62e4

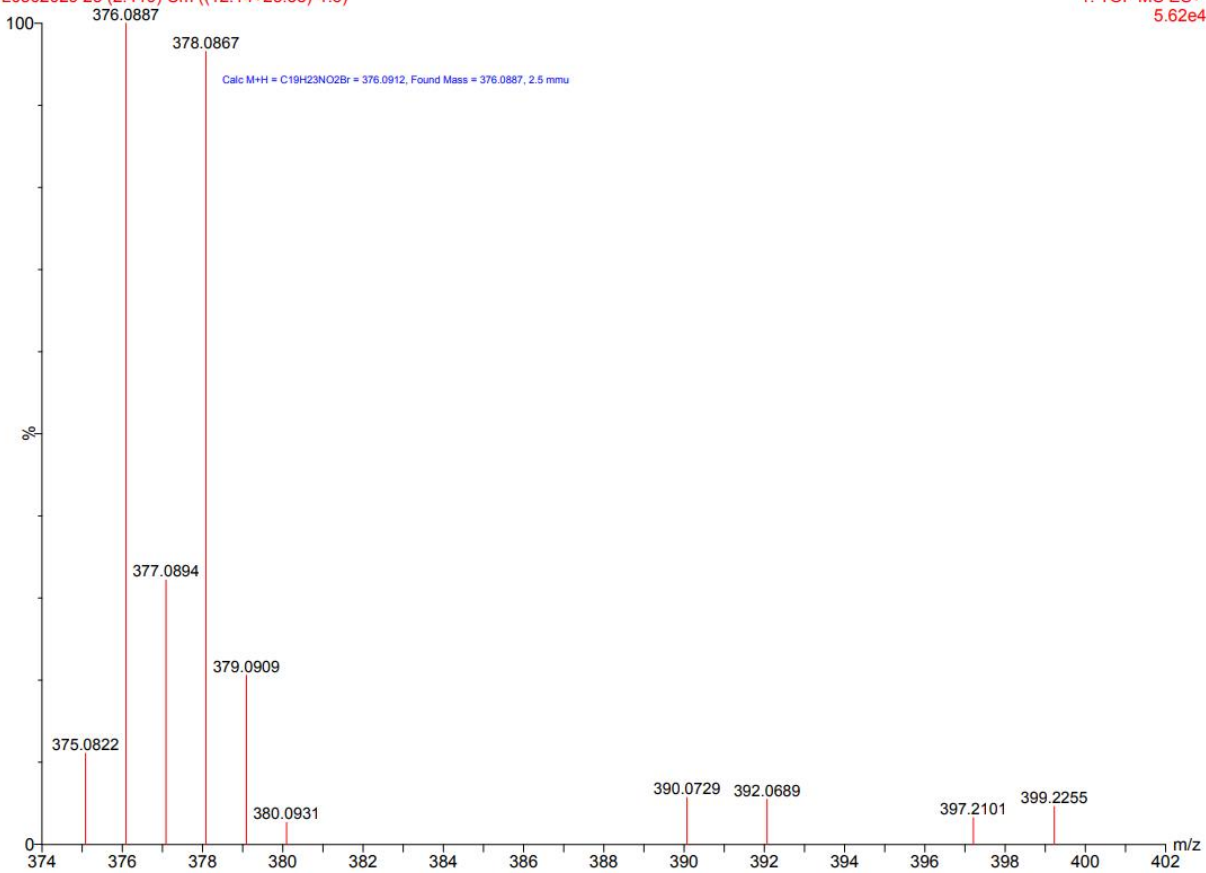
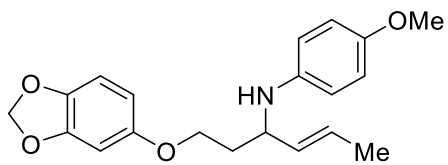


Table 1, Product Entry 5



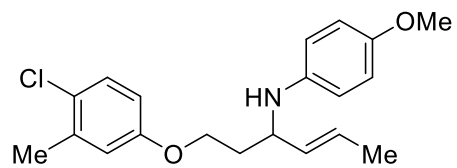
4, SS-2-43, in MeOH

L0302009 22 (2.271) Cm ((12:14+22:33)-1:6)

1: TOF MS ES+
5.82e4



Table 1, Product Entry 6



14, SS-02-37B, in MeOH

L0302037 23 (2.409) Cm ((7:14+23:33)-1:6)

1: TOF MS ES+
2.82e4

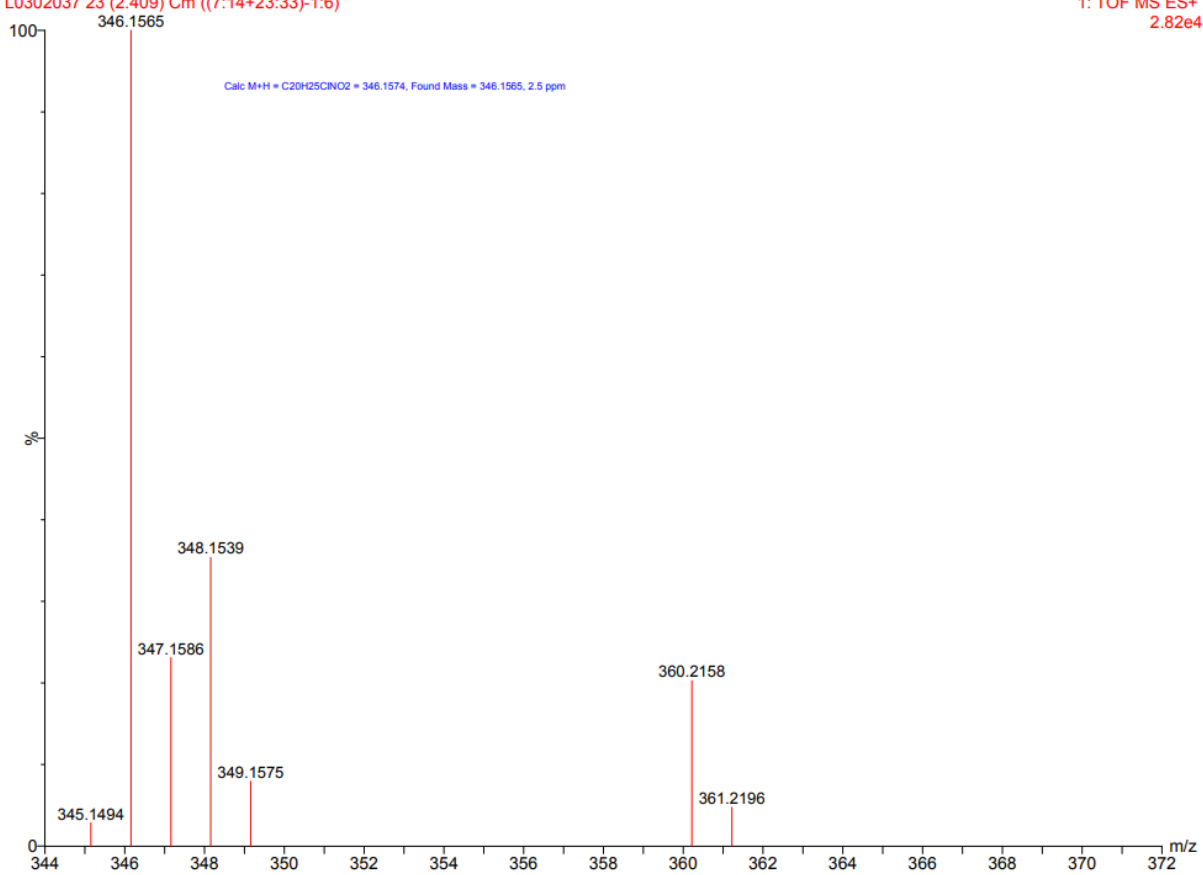
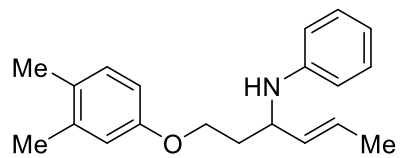


Table 1, Product Entry 7



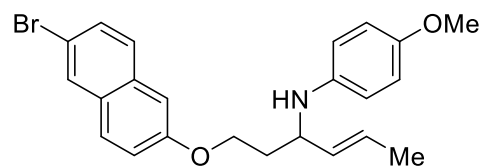
12, NS-01-58, in MeOH

L0302033 22 (2.270) Cm ((13:14+22:33)-1:6)

1: TOF MS ES+
1.97e4



Table 1, Product Entry 8



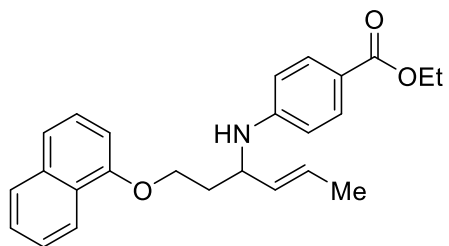
2, SS-2-33b, in MeOH

L0302005 23 (2.409) Cm ((11:13+23:33)-1:6)

1: TOF MS ES+
1.17e5



Table 1, Product Entry 9

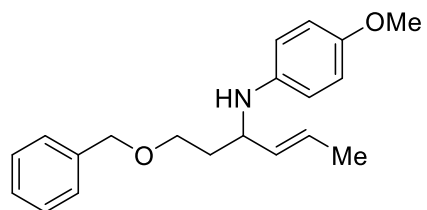


6, AHS-02-37A, in MeOH

L0302023 16 (1.650) Cm ((13:16+20:32)-1:6)



Table 1, Product Entry 10



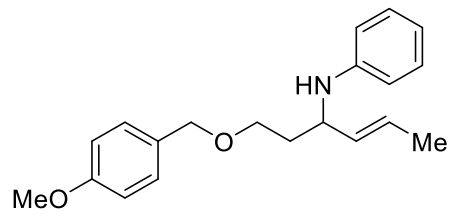
1, SS-2-41, in MeOH

L0302003 28 (2.890) Cm ((11:12+28:33)-1:6)

1: TOF MS ES+
8.31e4



Table 1, Product Entry 11



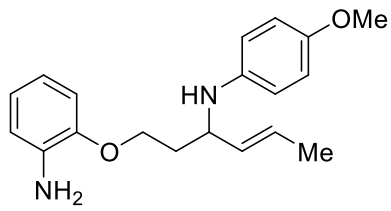
13, NS-01-57, in MeOH

L0302035 23 (2.410) Cm ((7:14+23:33)-1:6)

1: TOF MS ES+
2.59e4



Table 1, Product Entry 12



7, AHS-01-115, in MeOH

L0302025 25 (2.616) Cm (25:33)

1: TOF MS ES+
1.21e4

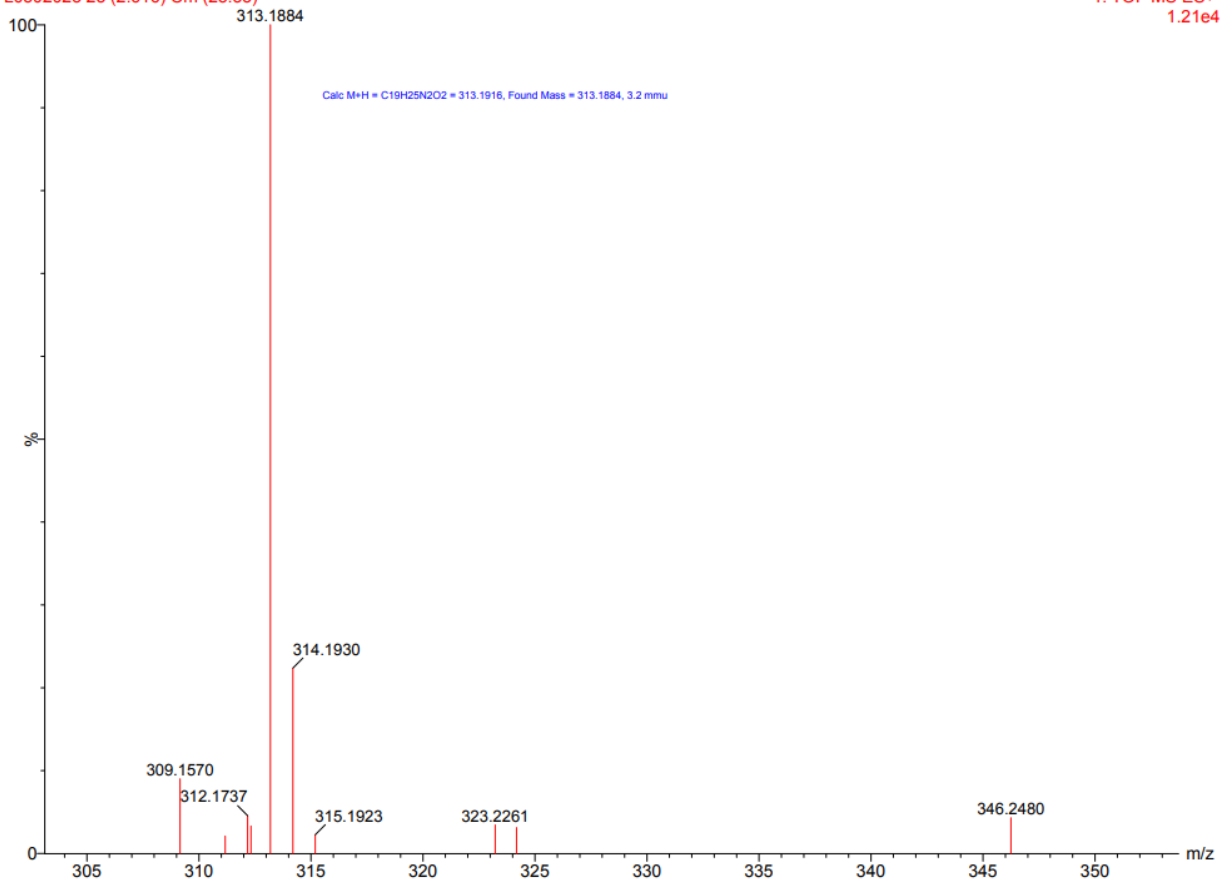
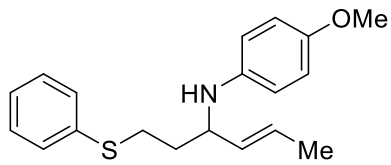


Table 1, Product Entry 13



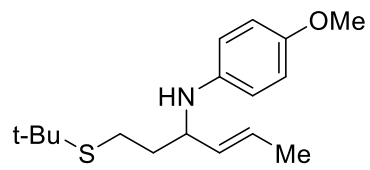
3, SS-2-42b, in MeOH

L0302007 21 (2.203) Cm ((8+11+13:14+21:33)-1:6)

1: TOF MS ES+
5.92e4



Table 1, Product Entry 14



11, NS-01-60, in MeOH

L0302031 22 (2.271) Cm ((12:14+22:33)-1:6)

1: TOF MS ES+
4.61e4

