

Fig.s1

Title: The flowchart of the exclusion criteria

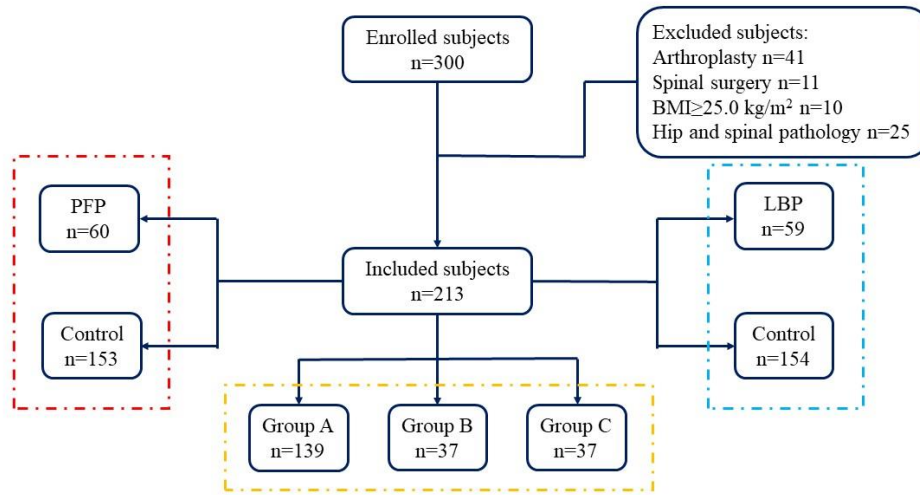


Fig.s1 300 volunteers were recruited, and 87 of which were excluded. The remaining 213 subjects were divided into three large groups according to the needs of the experiment.

PFP: patellofemoral joint pain

LBP: Low back pain

Fig.s2



Fig.s2 EOS can obtain accurate 2D and 3D data.

Fig.s3

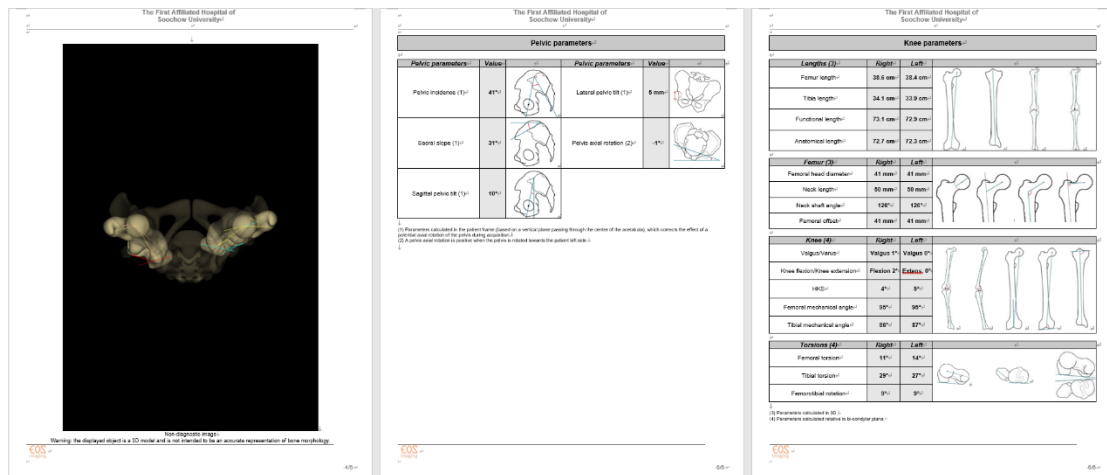


Fig.s3 The most of radiological parameters are presented in the EOS report..