

Some of the membranes were cur and the pieces were processed separately with different antibodies. This allowed us to analyze different markers from the same gel and also save the material.

Figure 1a

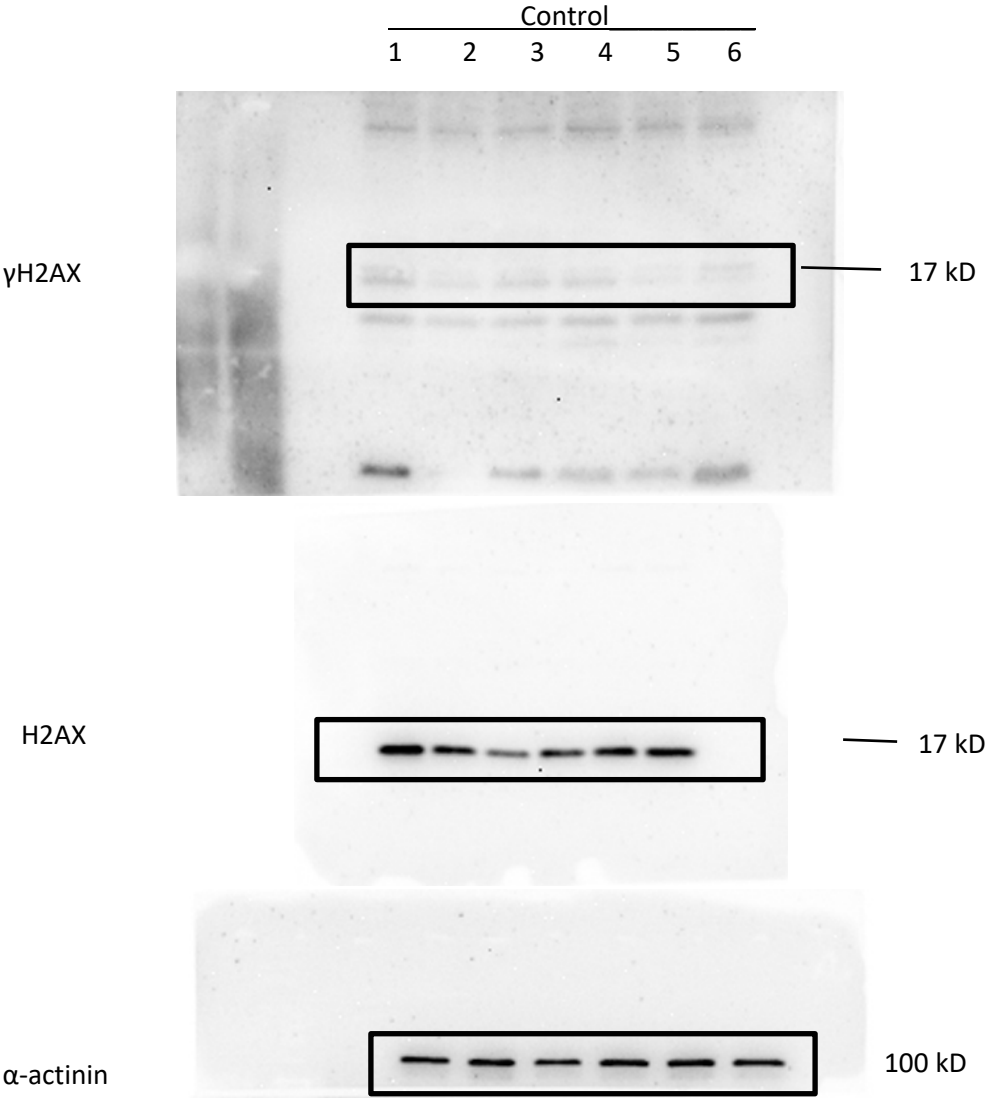


Figure 1b

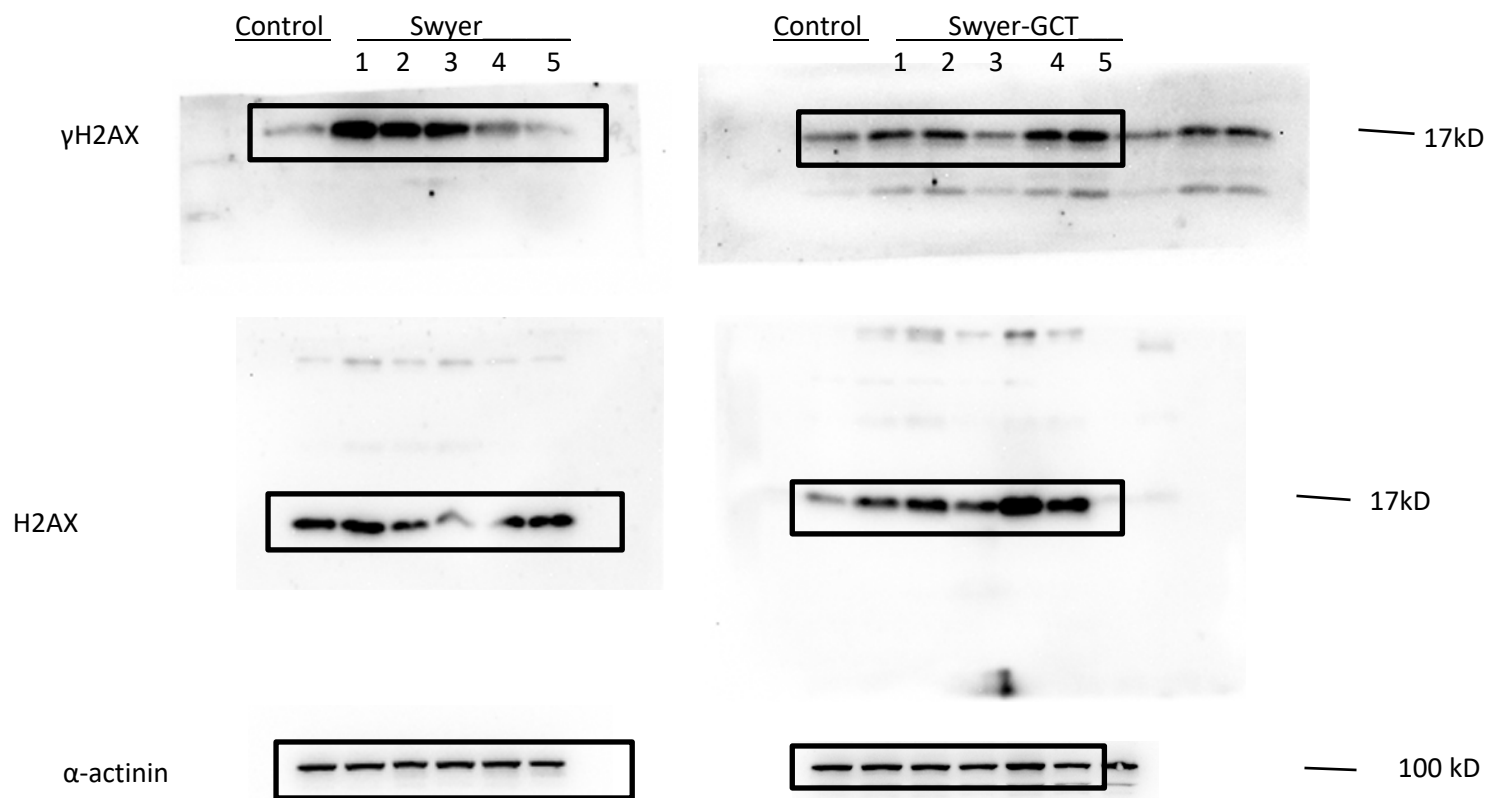


Figure 1d

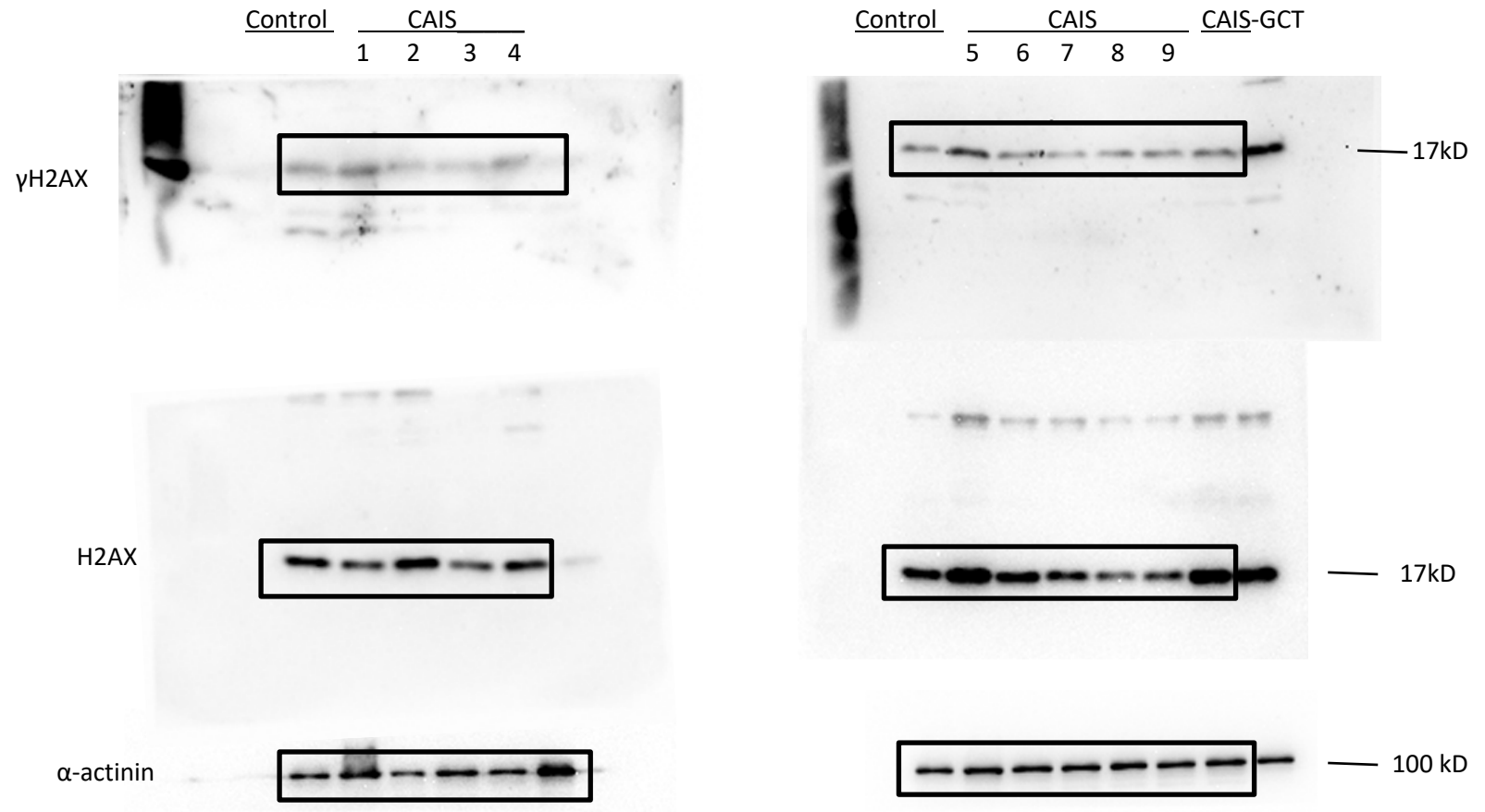


Figure 1e

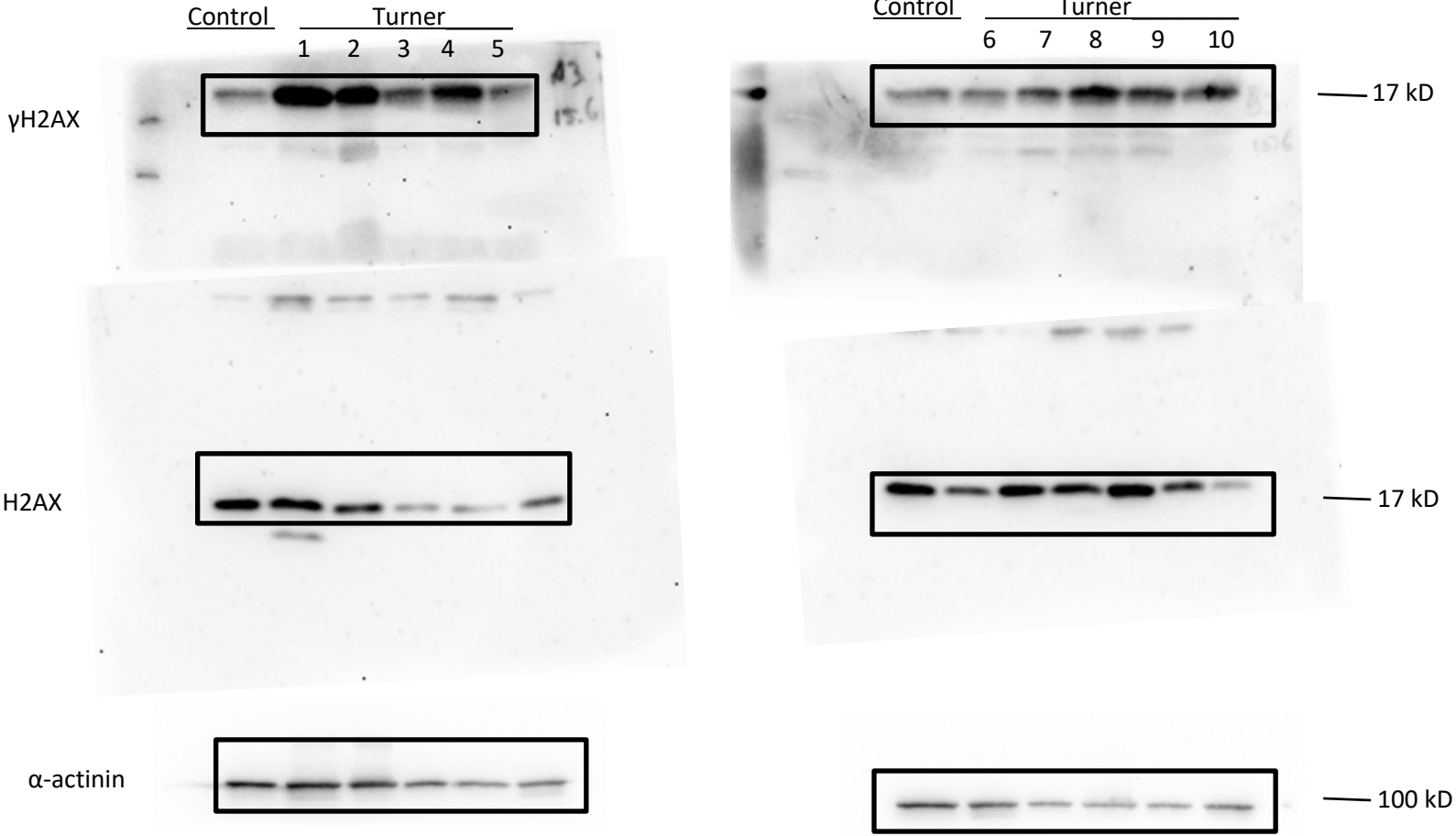


Figure 1f

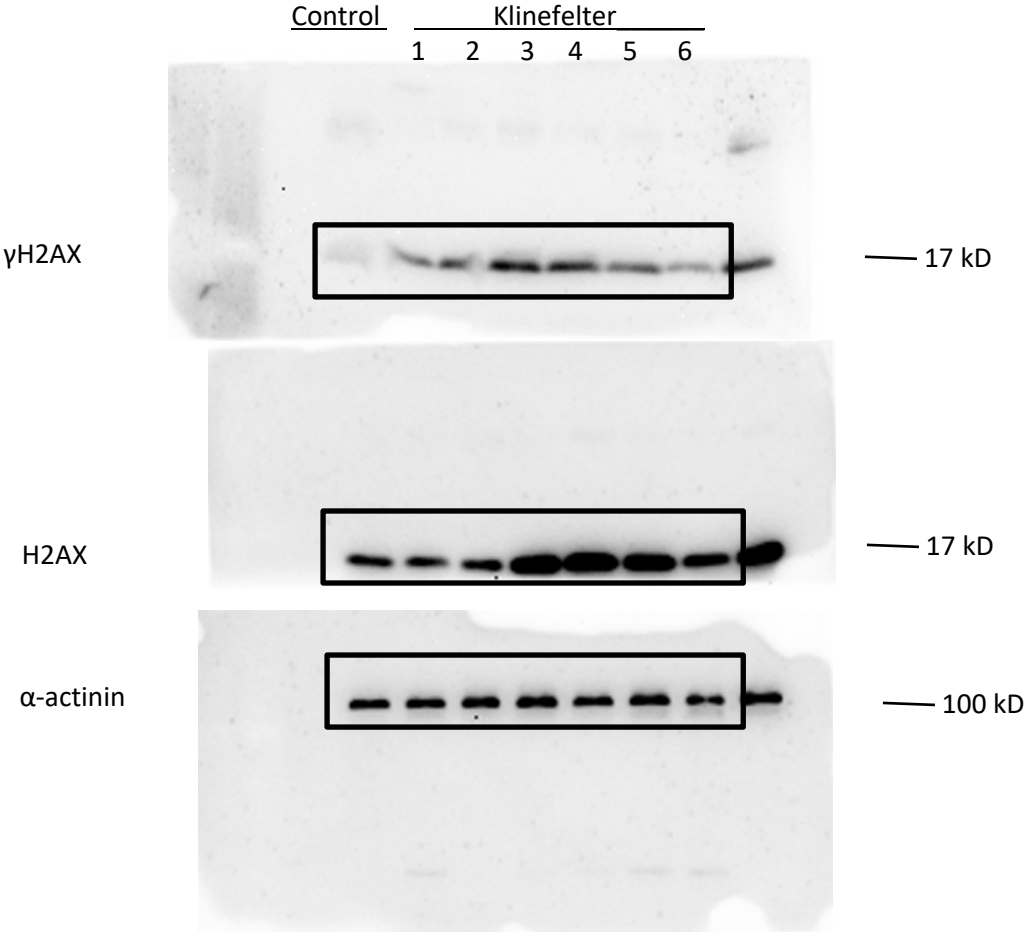


Figure 1i

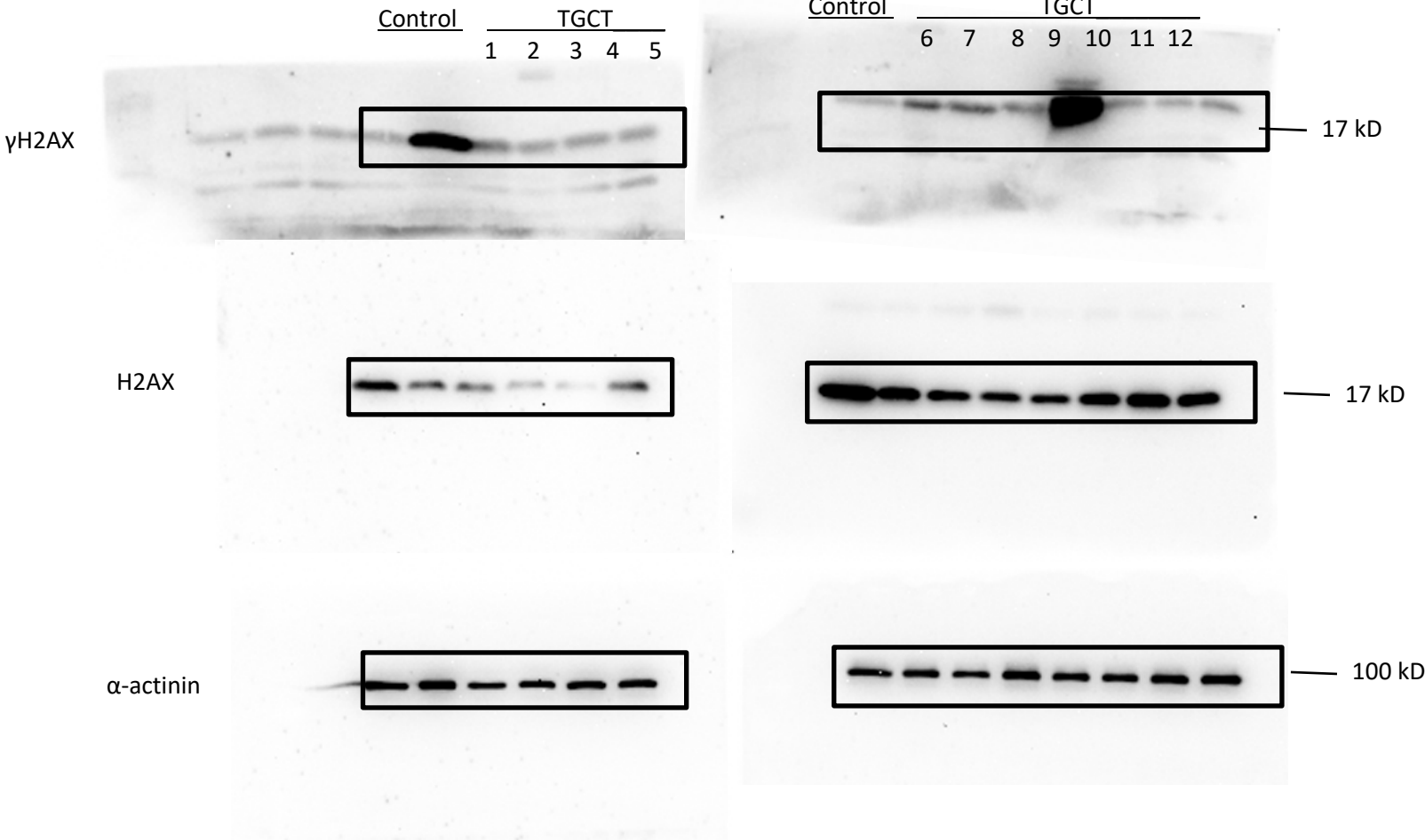


Figure 4f

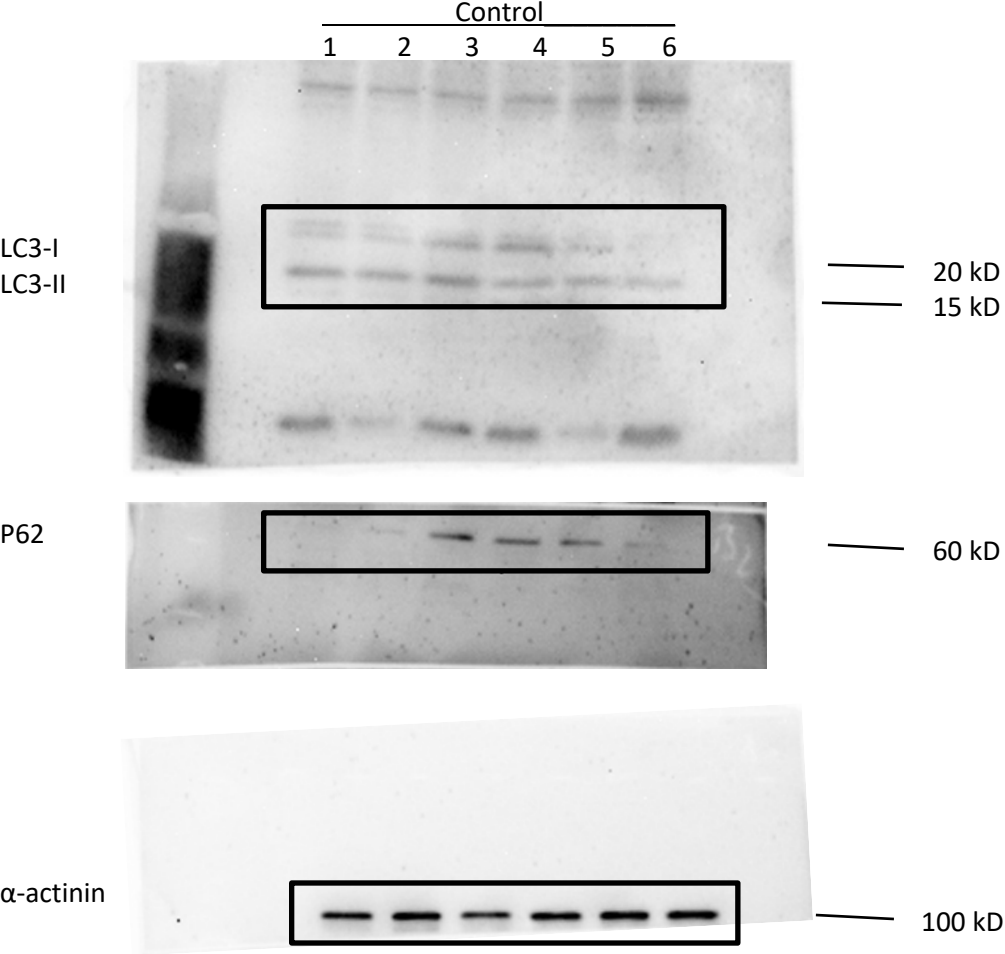






Figure 4h

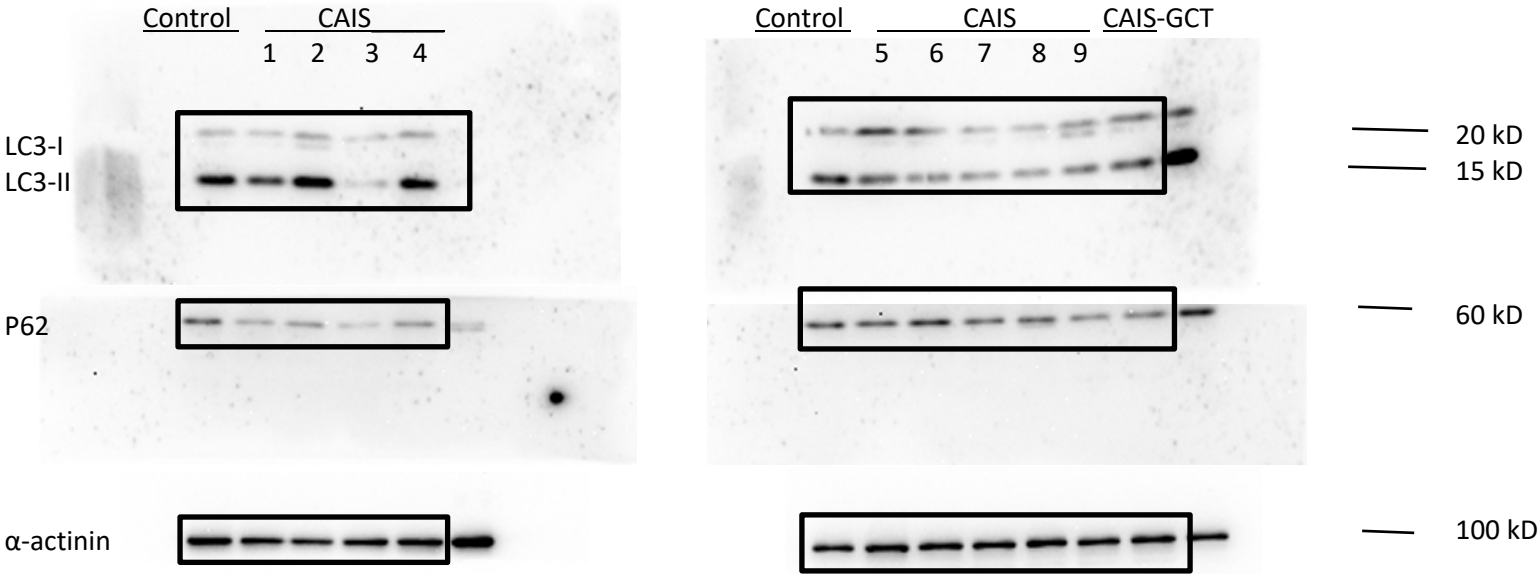


Figure 4i

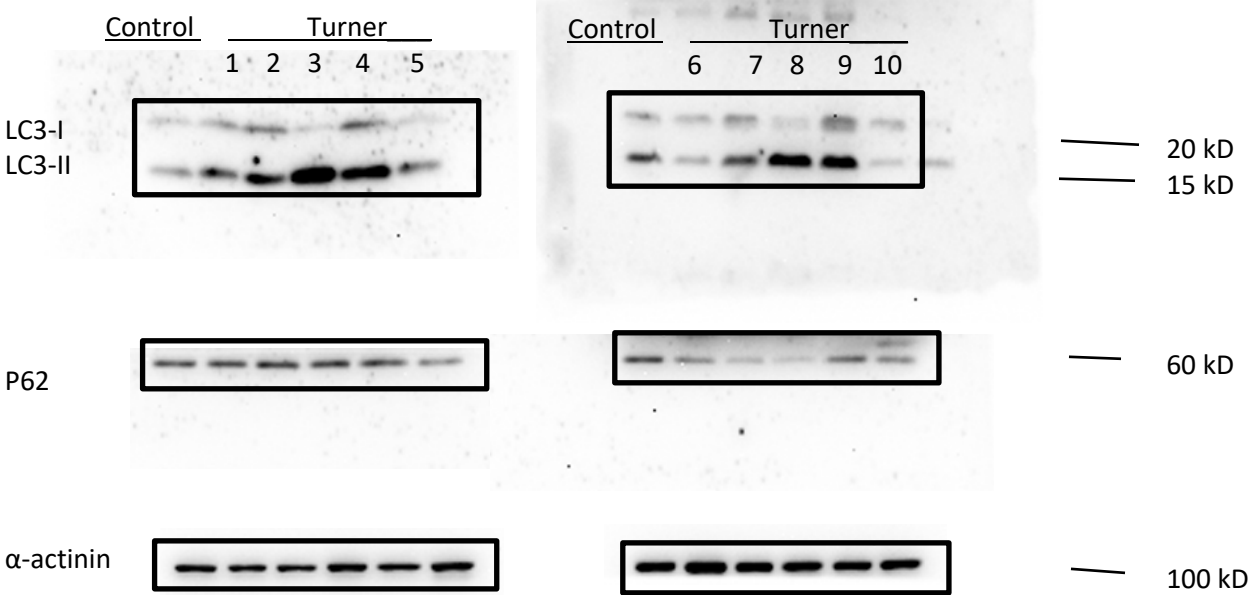


Figure 4j

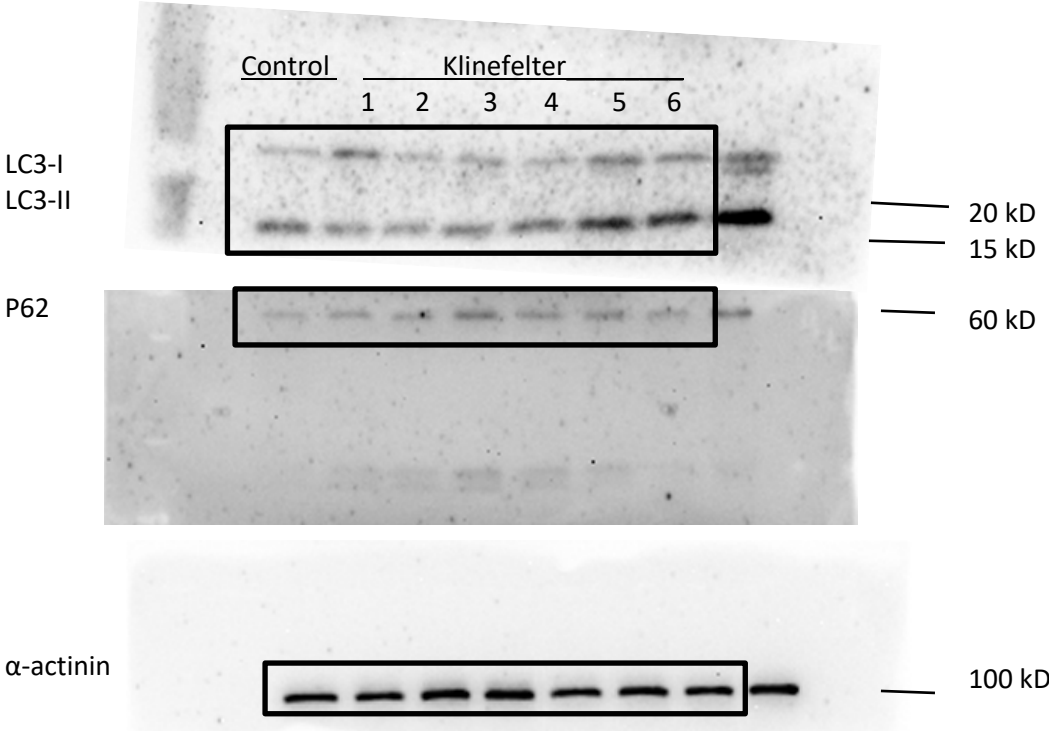


Figure 4m

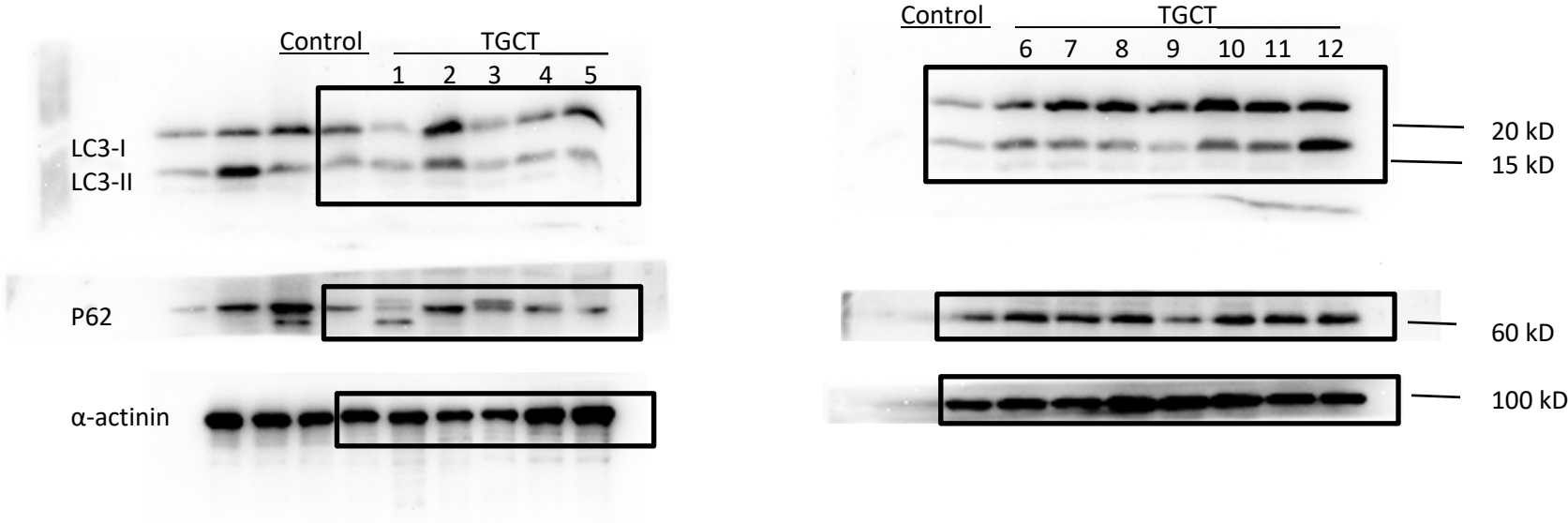


Figure 5a

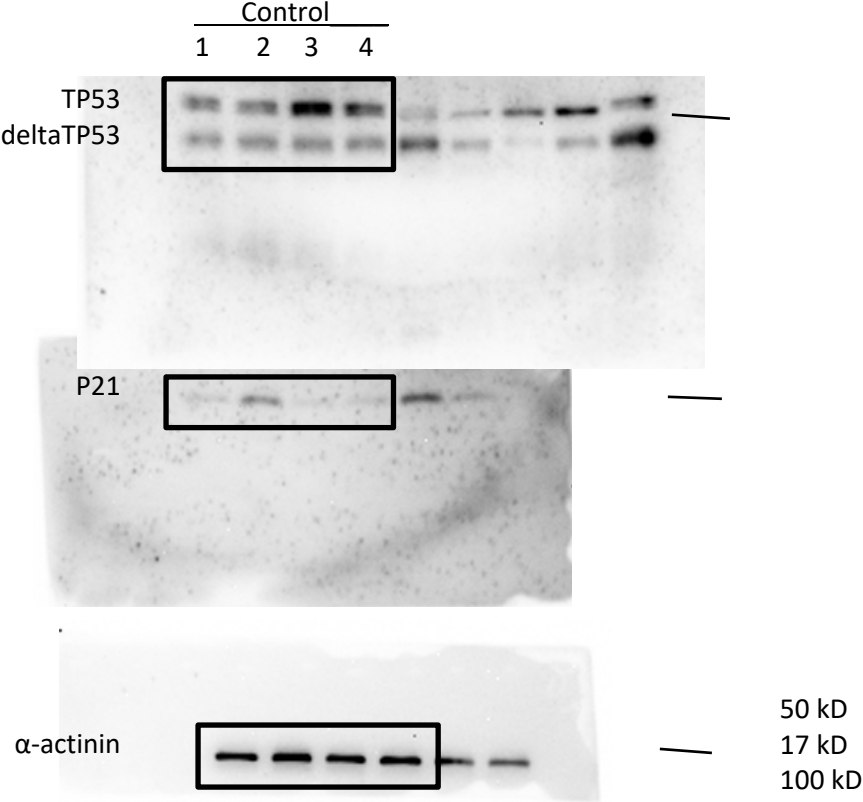




Figure 5c

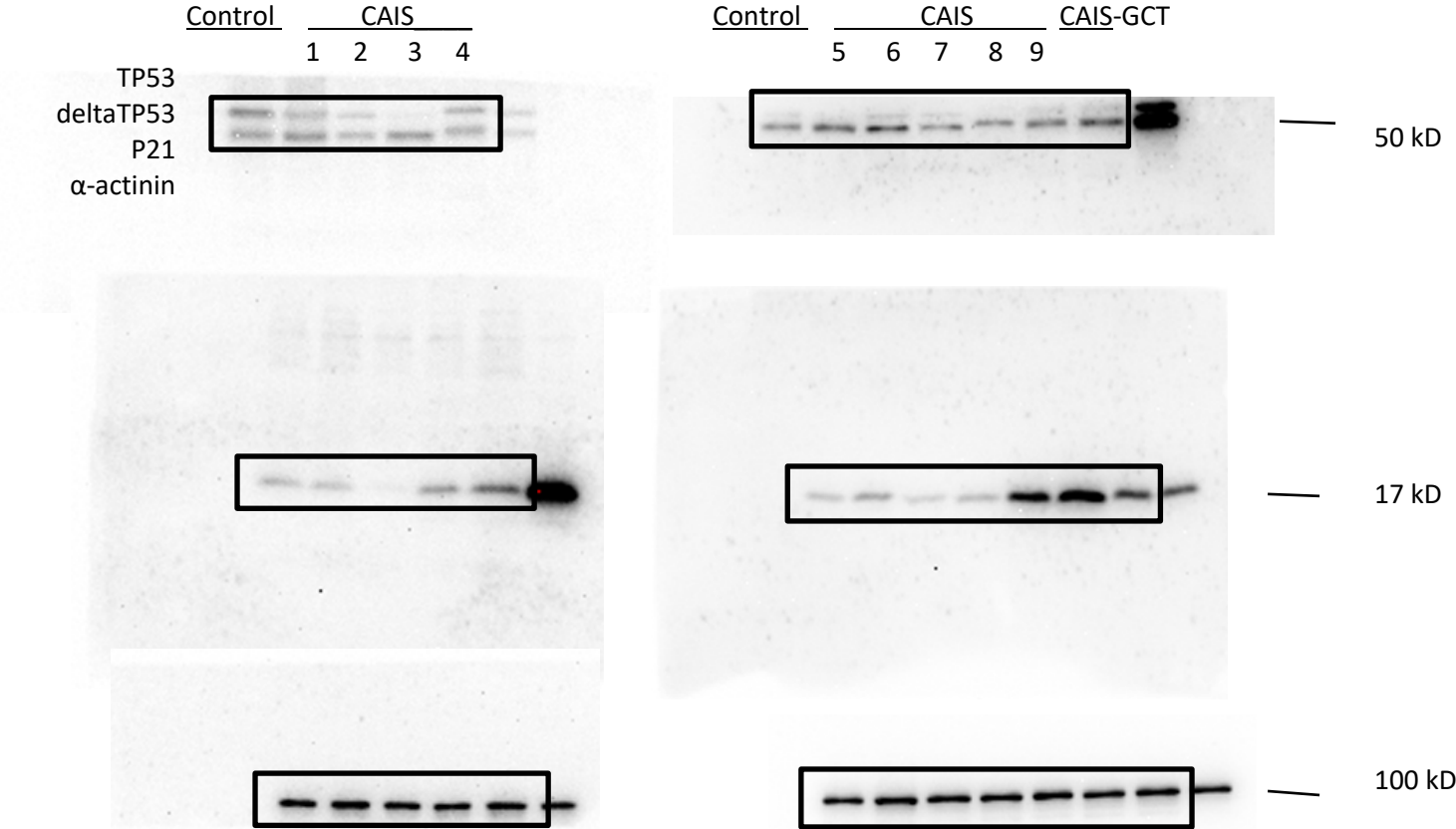








Figure 5g

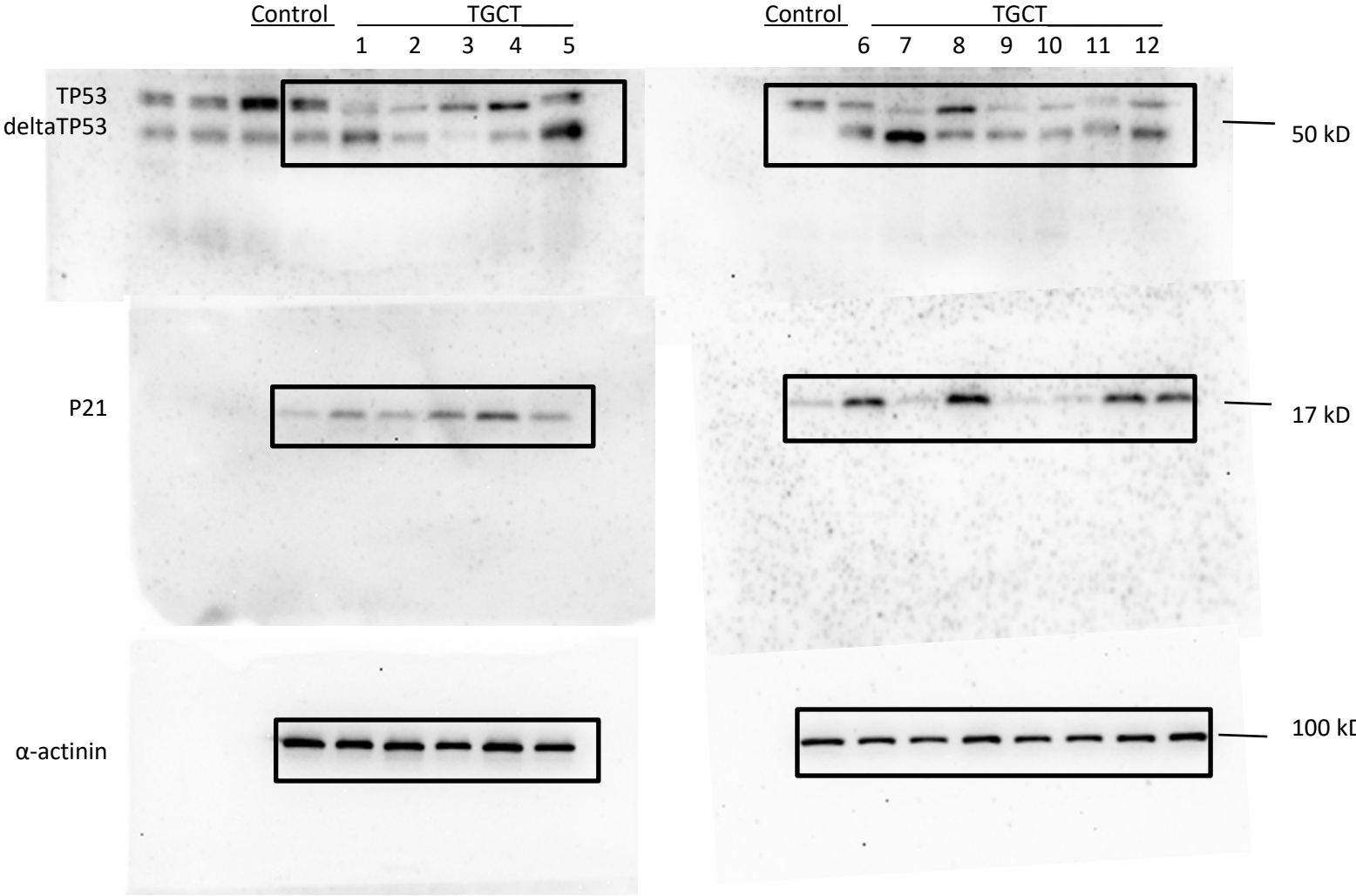


Figure 7a

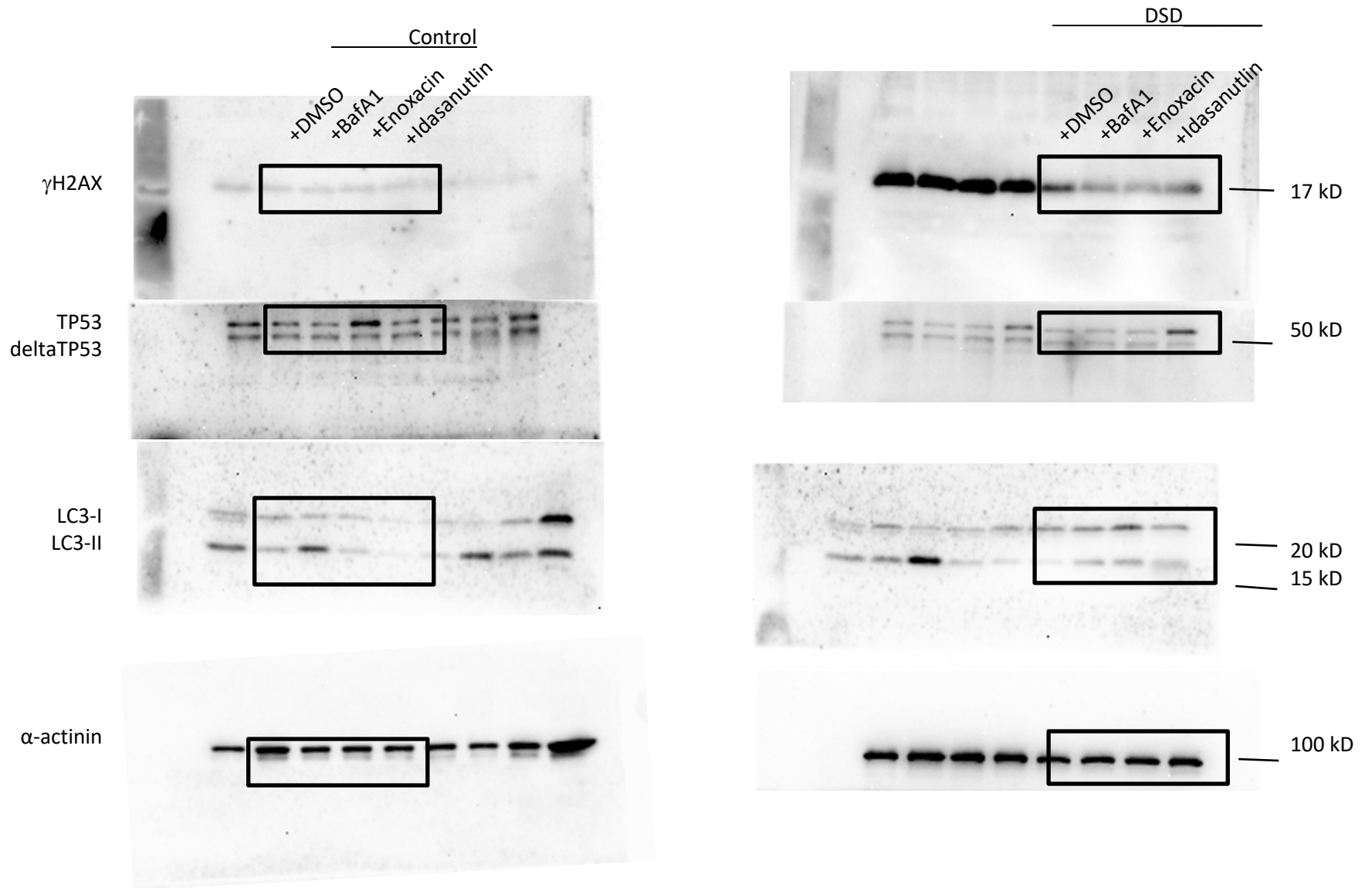
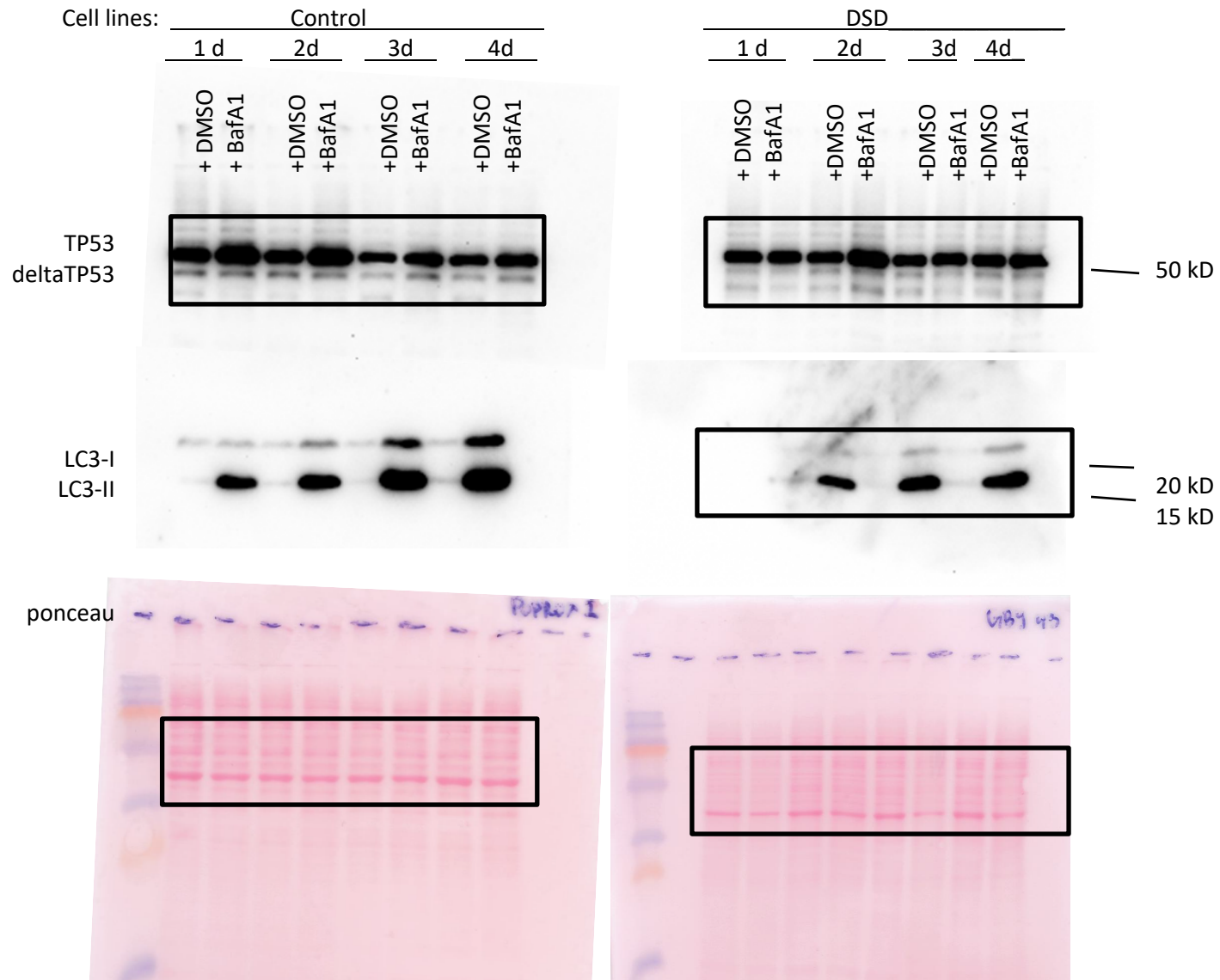


Figure 7e



Extended data figure 3e

