

Supplementary material for

**Influence of SARS-CoV-2 surveillance outputs produced by the UK Health Security Agency (UKHSA) Outbreak Surveillance Team on decision-making by local stakeholders**

Katriina Willgert<sup>1,2</sup>, Jo Hardstaff<sup>1</sup>, Stephanie Shadwell<sup>3</sup>, Alex Bhattacharya<sup>1</sup>, Paula Blomquist<sup>1</sup>, Roberto Vivancos<sup>1</sup>, Ian Simms<sup>1</sup>

*<sup>1</sup>Outbreak Surveillance Team, Field Services, UK Health Security Agency, United Kingdom*

*<sup>2</sup>Disease Dynamics Unit, Department of Veterinary Medicine, University of Cambridge, United Kingdom*

*<sup>3</sup>Data Product Development, Data Operations, UK Health Security Agency, United Kingdom*

## Appendix 1. Questionnaire

# Evaluation of the influence of the OST SAR-CoV-2 surveillance outputs on the development of intervention strategies used by Local Authorities

## Introduction

### **Evaluation the influence of the UK-HSA Outbreak Surveillance Team SAR-Cov-2 surveillance outputs**

Dear colleagues,

We would like to invite you to complete a questionnaire to help us evaluate the impact of COVID-19 surveillance outputs produced by the UK-HSA Outbreak Surveillance team (OST) on intervention strategies and plan for the future.

The format of our surveillance outputs will be updated to meet evolving needs of stakeholders and assure appropriate allocation of resources. This evaluation is an opportunity for stakeholders to have their say on the format of future surveillance outputs. The questionnaire should take ten minutes to complete. All data will be stored securely and the results of the survey will be anonymous.

Please contact [email address] if you have any questions.

Thank you in advance for completing the questionnaire, we look forward to hearing your thoughts.

Best wishes,

Outbreak Surveillance Team  
UK-HSA

## COVID-19 response

1. Have you taken part in the COVID-19 pandemic response?\*

- Yes  
 No

*If answered "No" to question 1:*

## Thank you

Please forward the questionnaire to appropriate colleague in your organisation involved in the COVID-19 pandemic response.

Thank you for your help and collaboration.

*If answered "yes" to question 1:*

## About you

2. What is your current position?

- Deputy regional director  
 Director of Public Health  
 Regional director  
 Other, please specify

3. What is your specialty?

Select at least 1.

- Data science  
 Epidemiology  
 Microbiology  
 Public health  
 Other, please specify

4. Where are you based?

- County council (upper tier local authority)
- Unitary authority
- District council (lower tier local authority)
- Health Protection Team/PHE centre
- Other, please specify

5. Which Public Health England region does your workplace belong to?

- East Midlands
- East of England
- London
- North East
- North West
- South East
- South West
- West Midlands
- Yorkshire and Humber

## Report use

6. How often do you use or refer to each of the following reports?

	Daily	Weekly	Less than monthly	Only when cases are low	Only when cases are high	Never
Daily regional surveillance	<input type="radio"/>	<input type="radio"/>	<input type="radio"/>	<input type="radio"/>	<input type="radio"/>	<input type="radio"/>
Regional situation awareness reports	<input type="radio"/>	<input type="radio"/>	<input type="radio"/>	<input type="radio"/>	<input type="radio"/>	<input type="radio"/>
LA Reports	<input type="radio"/>	<input type="radio"/>	<input type="radio"/>	<input type="radio"/>	<input type="radio"/>	<input type="radio"/>
JSAT	<input type="radio"/>	<input type="radio"/>	<input type="radio"/>	<input type="radio"/>	<input type="radio"/>	<input type="radio"/>
Epislides	<input type="radio"/>	<input type="radio"/>	<input type="radio"/>	<input type="radio"/>	<input type="radio"/>	<input type="radio"/>

7. What do you use the UK-HSA COVID-19 Daily regional surveillance report for? Please select all that apply

Select at least 1.

- Main source of daily updates on local COVID-19 epidemiology
- Source of additional context for local COVID-19 epidemiology
- Source of charts/figures for local reports/presentations
- Forwarded in entirety to partners
- Summarise key information to forward to partners
- I do not use the report
- Other, please specify

8. What do you use the UK-HSA COVID-19 Regional situation awareness reports for? Please select all that apply

Select at least 1.

- Main source of daily updates on local COVID-19 epidemiology
- Source of additional context for local COVID-19 epidemiology
- Source of charts/figures for local reports/presentations
- Forwarded in entirety to partners
- Summarise key information to forward to partners
- I do not use the report
- Other, please specify

9. What do you use the UK-HSA COVID-19 LA Reports for? Please select all that apply

Select at least 1.

- Main source of daily updates on local COVID-19 epidemiology
- Source of additional context for local COVID-19 epidemiology
- Source of charts/figures for local reports/presentations
- Forwarded in entirety to partners
- Summarise key information to forward to partners
- I do not use the report
- Other, please specify

10. What do you use the UK-HSA COVID-19 JSAT report for? Please select all that apply  
Select at least 1.

- Main source of daily updates on local COVID-19 epidemiology
- Source of additional context for local COVID-19 epidemiology
- Source of charts/figures for local reports/presentations
- Forwarded in entirety to partners
- Summarise key information to forward to partners
- I do not use the report
- Other, please specify

11. What do you use the UK-HSA COVID-19 Epislides for? Please select all that apply  
Select at least 1.

- Main source of daily updates on local COVID-19 epidemiology
- Source of additional context for local COVID-19 epidemiology
- Source of charts/figures for local reports/presentations
- Forwarded in entirety to partners
- Summarise key information to forward to partners
- I do not use the report
- Other, please specify

## Public health impact of OST outputs

12. Has the information provided within OST outputs been used for decision making within your organisation?

	Yes	No
Daily Regional Surveillance	<input type="radio"/>	<input type="radio"/>
Regional Situational Awareness Reports	<input type="radio"/>	<input type="radio"/>
LA Reports	<input type="radio"/>	<input type="radio"/>
JSAT	<input type="radio"/>	<input type="radio"/>
Epislides	<input type="radio"/>	<input type="radio"/>

13. Have any changes in COVID-19 intervention strategies been instituted in your local region as a result of these decisions?

- Yes
- No

14. The content of reports has been revised during the course of the pandemic. Did these revisions maintain a timely insight into the development of the pandemic?

	Yes	No
Daily regional surveillance	<input type="radio"/>	<input type="radio"/>
Regional situation awareness reports	<input type="radio"/>	<input type="radio"/>
LA Reports	<input type="radio"/>	<input type="radio"/>
JSAT	<input type="radio"/>	<input type="radio"/>
Epislices	<input type="radio"/>	<input type="radio"/>

15. If the content of reports did not maintain a timely insight into the development of the pandemic please provide details of where they could be improved.

## UK-HSA COVID-19 LA Report: case numbers and rates

16. Utility of tables and figures in the PHE COVID-19 LA Report to your organisation:  
How often do you use the resource below? Please select the option that applies

	Never	Previously	Sometimes	Regularly
Case numbers and rates	<input type="radio"/>	<input type="radio"/>	<input type="radio"/>	<input type="radio"/>

17. How useful do you find the resource below? Please select the option that applies

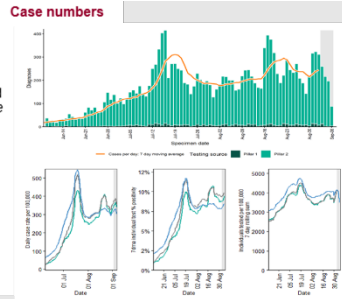
	Not useful	Could be useful	Useful	Very useful
Case numbers and rates	<input type="radio"/>	<input type="radio"/>	<input type="radio"/>	<input type="radio"/>

## 1. Epidemiology of COVID-19 cases

### Summary criteria for tiering

**Table 1.** Overview of Tier criteria 1-4; case rate (all ages), case rate (60+ years) and positivity in most recent 7 day reporting period (August 27 to September 2, 2021) and the change since prior 7 day period (August 20 to August 26, 2021). Relative change arrow based on incidence rate ratio  $p$  value  $<0.05$ . The last four days data should be considered as provisional.

Indicator	Current week	Change from previous week
Case Rate (per 100,000)	339.4	↗ +6.3
Case Rate in over 60s (per 100,000)	118.8	↔ 0.0
PCR Positivity rate (%)	8.7 %	↘ -0.7 %



## UK-HSA COVID-19 LA Report: exceedance

18. Utility of tables and figures in the PHE COVID-19 LA Report to your organisation:  
How often do you use the resource below? Please select the option that applies

Never
Previously
Sometimes
Regularly

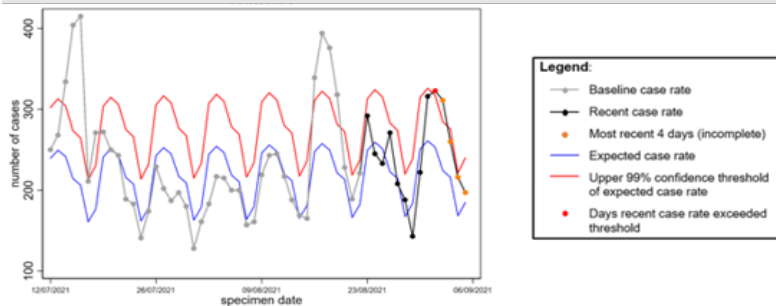
Exceedance

19. How useful do you find the resource below? Please select the option that applies

Not useful
Could be useful
Useful
Very useful

Exceedance

### Exceedance



## UK-HSA COVID-19 LA Report: geographical context

20. Utility of tables and figures in the PHE COVID-19 LA Report to your organisation:  
How often do you use the resource below? Please select the option that applies

Never
Previously
Sometimes
Regularly

Geographical context



21. How useful do you find the resource below? Please select the option that applies

Not useful

Could be useful

Useful

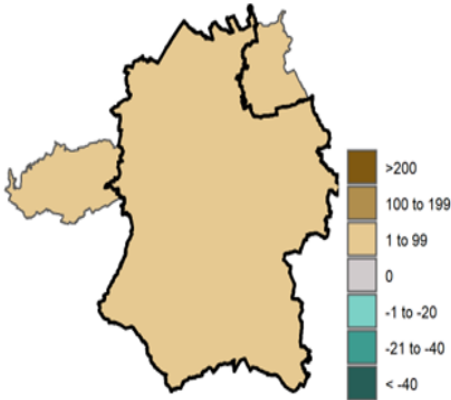
Very useful

Geographical context



### Geographical context and distribution

Rate change between 20 Aug to 26 Aug and 27 Aug to 02 Sep 2021



Rank	Ward	Prior week (2021-08-20 to 2021-08-26)		Most recent week (2021-08-27 to 2021-09-02)		Change in rate between two weeks	
		Cases	Rate	Cases	Rate	%	Absolute
[Table content is obscured]							

## UK-HSA COVID-19 LA Report: case characteristics

22. Utility of tables and figures in the PHE COVID-19 LA Report to your organisation: How often do you use the resource below? Please select the option that applies

Never

Previously

Sometimes

Regularly

Case characteristics



23. How useful do you find the resource below? Please select the option that applies

Not useful

Could be useful

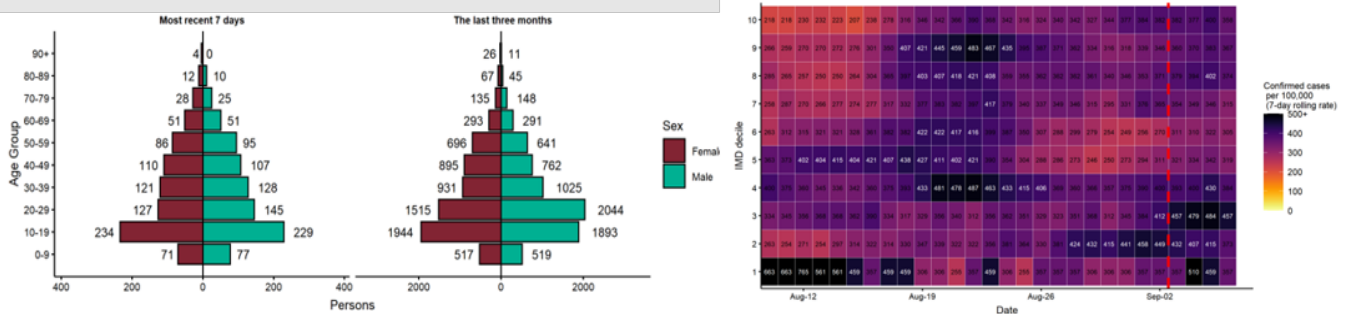
Useful

Very useful

Case characteristics



### Case characteristics



# UK-HSA COVID-19 LA Report: mortality and hospitalisation

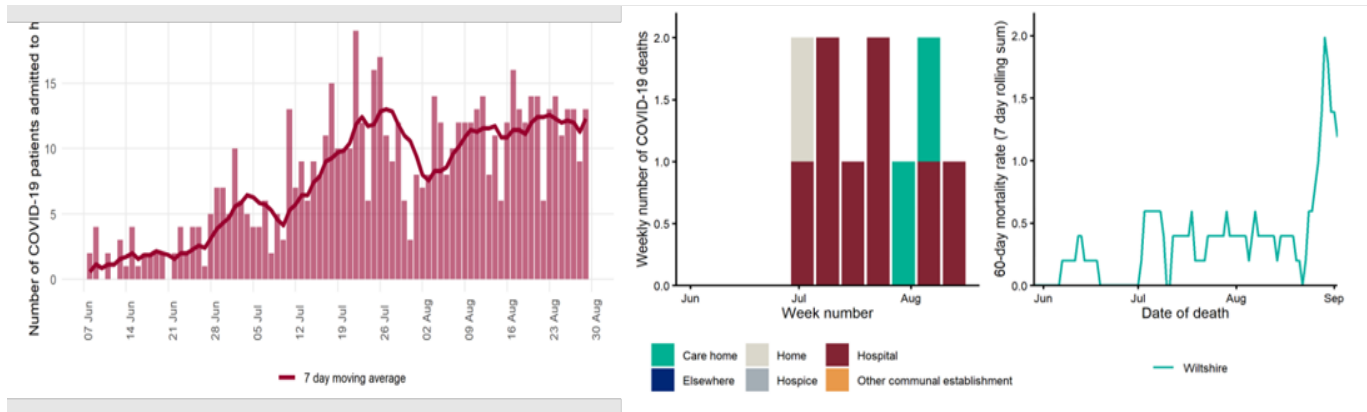
24. Utility of tables and figures in the PHE COVID-19 LA Report to your organisation:

How often do you use the resource below? Please select the option that applies

	Never	Rarely	Sometimes	Regularly
Mortality and hospitalisation	<input type="radio"/>	<input type="radio"/>	<input type="radio"/>	<input type="radio"/>

25. How useful do you find the resource below? Please select the option that applies

	Not useful	Could be useful	Useful	Very useful
Mortality and hospitalisation	<input type="radio"/>	<input type="radio"/>	<input type="radio"/>	<input type="radio"/>



# UK-HSA COVID-19 LA Report: population testing metrics

26. Utility of tables and figures in the PHE COVID-19 LA Report to your organisation:

How often do you use the resource below? Please select the option that applies

	Never	Previously	Sometimes	Regularly
Population testing metrics	<input type="radio"/>	<input type="radio"/>	<input type="radio"/>	<input type="radio"/>

27. How useful do you find the resource below? Please select the option that applies

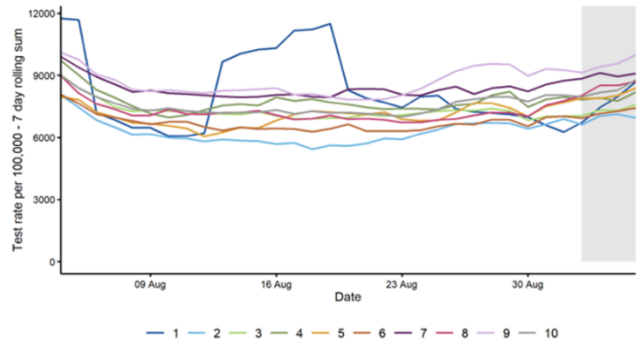
	Not useful	Could be useful	Useful	Very useful
Population testing metrics	<input type="radio"/>	<input type="radio"/>	<input type="radio"/>	<input type="radio"/>

## 2. Population testing metrics

**Figure 14.** Number of individuals tested for COVID-19 (overall and by pillar) among residents of usual residence, from June 8, 2021 to September 6, 2021. 4 most recent days are provisional - indicated by a grey background.



**Figure 15.** IMD-specific 7-day rolling Pillar 1 and 2 test rates per 100,000 population among residents of usual residence (IMD of LSOA of usual residence (1 = most deprived, 10 = least deprived), August 4, 2021 to September 6, 2021. Where an IMD is not present in local denominator data, it is not shown. The 4 most recent days are provisional - indicated by a grey background.



## UK-HSA COVID-19 LA Report: exposure settings

28. Utility of tables and figures in the PHE COVID-19 LA Report to your organisation:

How often do you use the resource below? Please select the option that applies



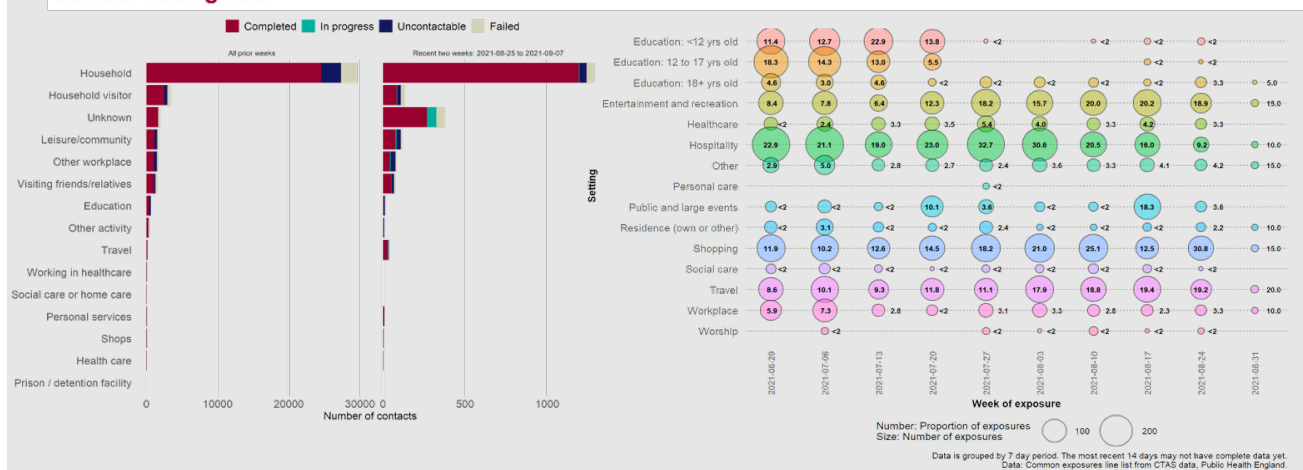
29. How useful do you find the resource below? Please select the option that applies



## 3. Exposure settings

Actual setting of transmission cannot be definitively concluded from routine surveillance data and exposure should always be identified or confirmed through detailed patient-level case data held locally. However, surveillance can indicate potential settings for exposure and change in these over time.

### Contact tracing data



# UK-HSA COVID-19 LA Report: appendices

30. Utility of tables and figures in the PHE COVID-19 LA Report to your organisation:  
How often do you use the resource below? Please select the option that applies

**Never**
**Previously**
**Sometimes**
**Regularly**

Appendix 1

31. How useful do you find the resource below? Please select the option that applies

**Never**
**Could be useful**
**Useful**
**Very useful**

Appendix 1.

## Appendix

**Appendix 1.** Detail of outbreaks, clusters, exposures, issues, and threats in York with first specimen date in past 14 days or first listed in HPZone in the past 14 days (August 24 2021 to September 6 2021) - private residences excluded *Source: Residential clusters identified in linelist using case address and situations logged in HPZone. Note that HPZone information, particularly on detail related to laboratory confirmation and numbers symptomatic or exposed, usually reflects the situation when first recorded on HPZone and may not be updated.*

Location name	Postcode	Setting Type*	Situation type	Cases*	Case dates (from linelist)		HPZone information			
					Specimen date of first case	Specimen date of last case	HPZone number	Date opened	Date closed	Lab. confirmation

32. Utility of tables and figures in the PHE COVID-19 LA Report to your organisation:  
How often do you use the resource below? Please select the option that applies

**Never**
**Previously**
**Sometimes**
**Regularly**

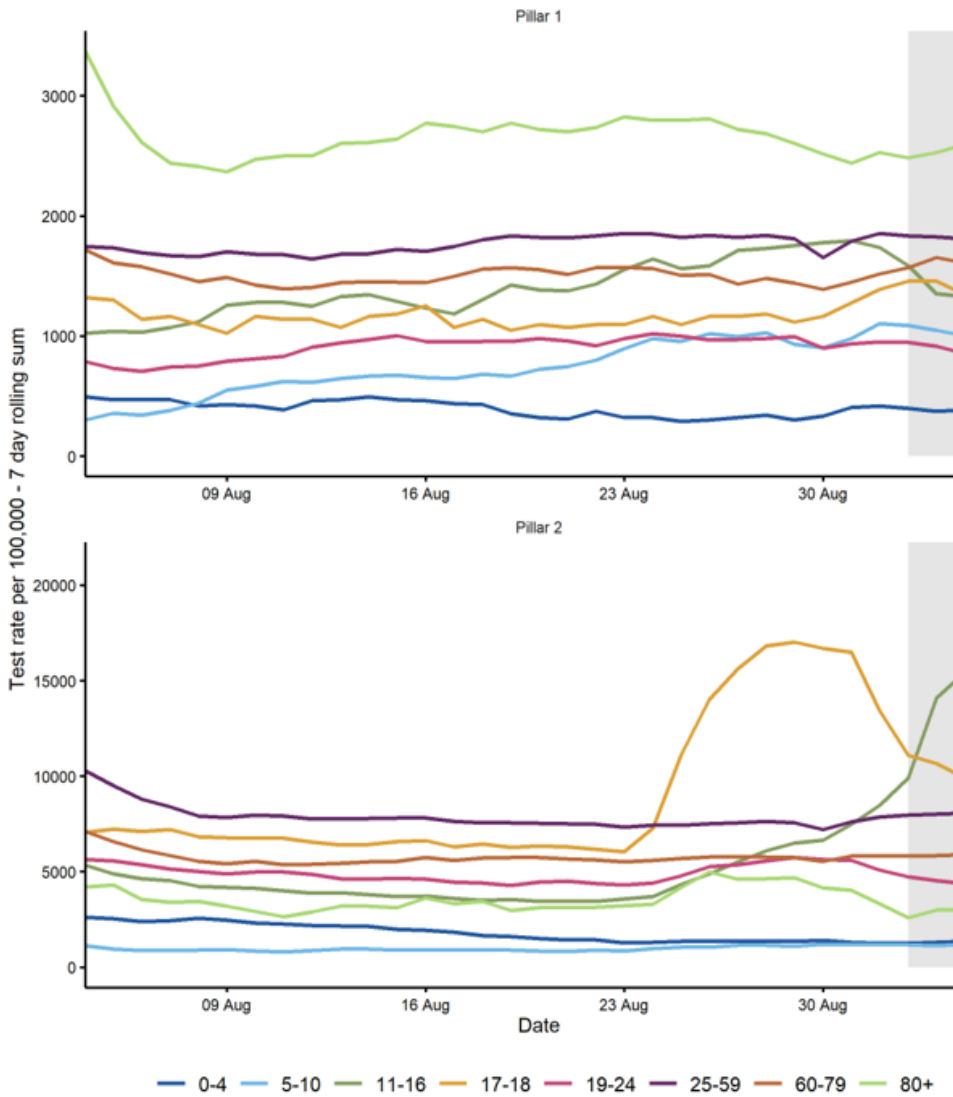
Appendix 2

33. How useful do you find the resource below? Please select the option that applies

**Not useful**
**Could be useful**
**Useful**
**Very useful**

Appendix 2

**Appendix 2.** Age-specific 7-day rolling test rates per 100,000 population by pillar among residents of August 4, 2021 to September 6 2021. 4 most recent days are provisional - indicated by a grey background



## UK-HSA COVID-19 LA Report

34. Was sufficient information on populations with protected characteristics included in the reports to inform local planning?

- No
- Yes
- Please specify missing characteristics that you would have liked to have seen

35. Have you used the method companion that accompanies the LA Report?

- Yes
- No
- I was not aware of a method companion

36. If the UK-HSA COVID-19 LA Reports were incorporated into the COVID-19 Situational Explorer dashboard, would this meet the needs of your organisation?

- Yes
- No

## Additional indicators

37. Are there any additional indicators/information that could be provided to support decision making at this stage in the pandemic?

- Yes
- No

## Alternative sources of information

38. What additional information sources do you use within your organisation to support decision making within the COVID-19 response? Please select all that apply

- UK-HSA dashboards
- Other UK-HSA reports
- Office for National Statistics (ONS)
- gov.uk
- gov.uk dashboard
- Care quality commission
- Academic publications
- Own information systems created within your organisation
- Other, please specify

## Communication

39. Have you ever contacted the UK-HSA Outbreak Surveillance team for supplementary information or to provide feedback?

Yes

No

*If answered "yes" to question 39:*

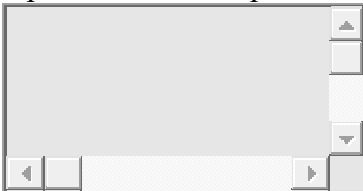
40. Have you received the support required when contacting the UK-HSA Outbreak Surveillance team?\*

Yes

No

## Other

41. Do you have any additional suggestions/comments on how the UK-HSA Outbreak Surveillance team reports could be improved to support the work of your organisation?



42. Please enter your email address if you would be happy for us to contact you for additional feedback

