

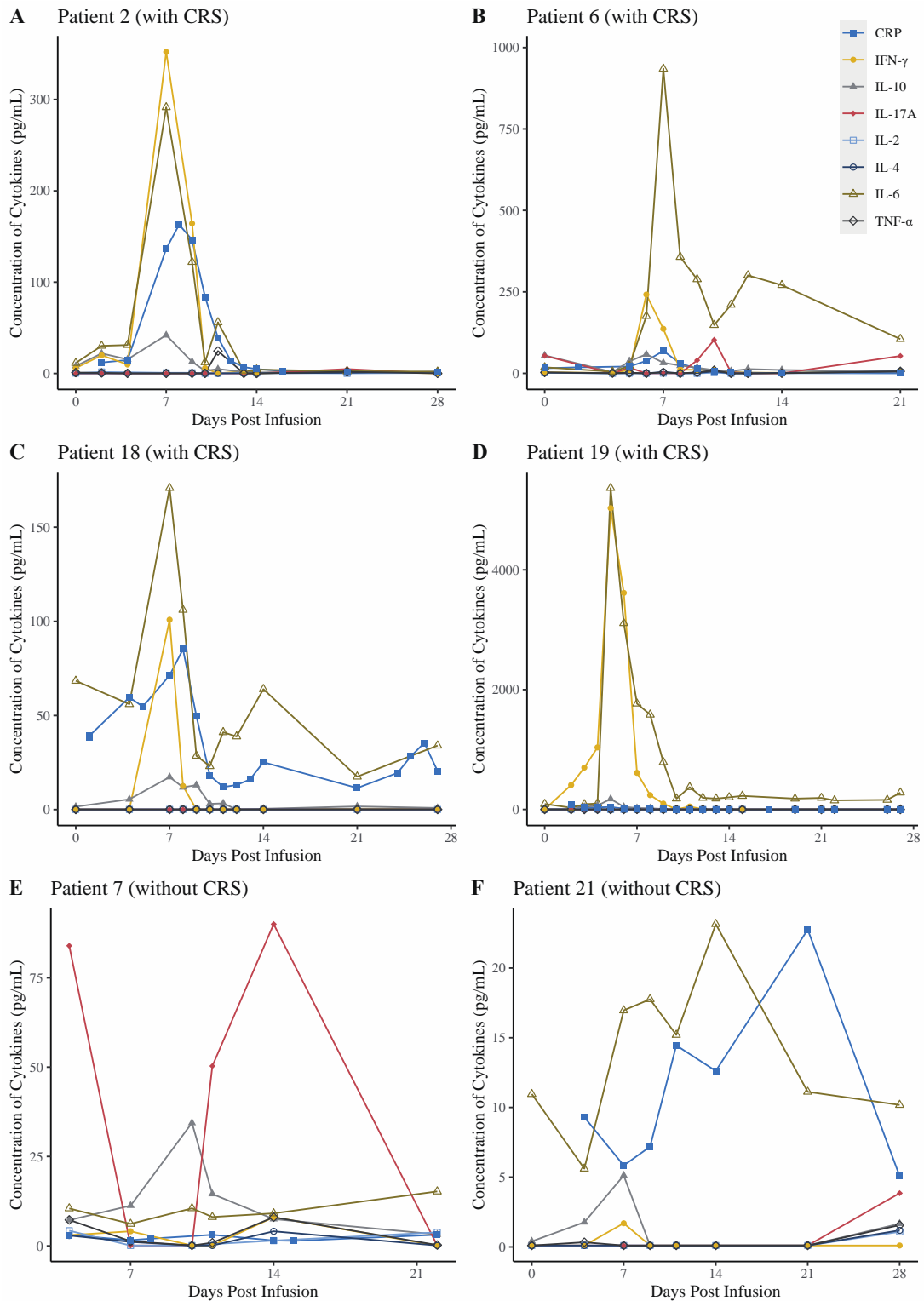
Supplementary Materials

Table of contents

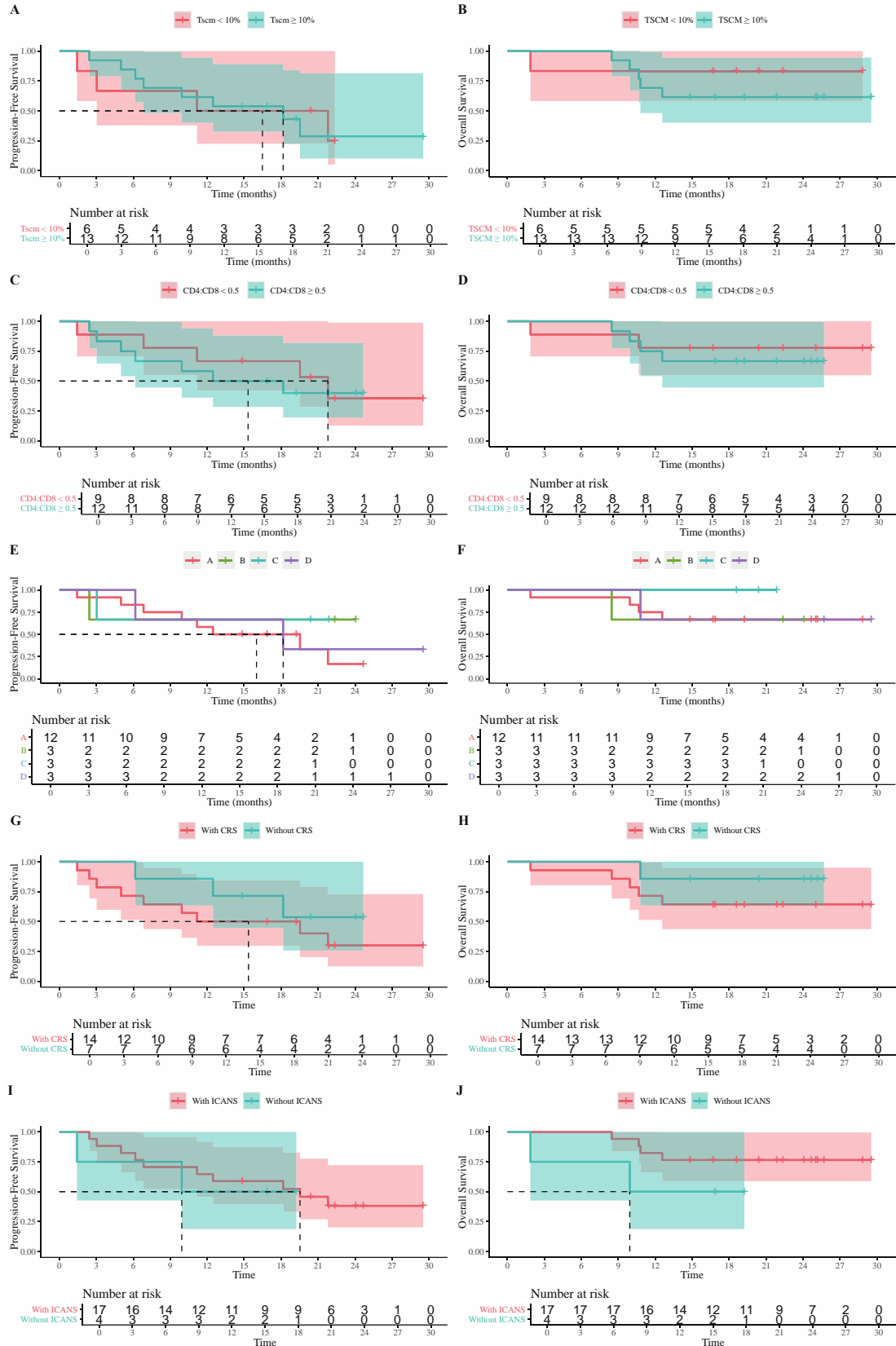
SUPPLEMENTARY FIGURES	2
SUPPLEMENTARY FIGURE 1. THE DYNAMIC FLUCTUATION OF CYTOKINES IN REPRESENTATIVE PATIENTS WITH OR WITHOUT CRS	2
SUPPLEMENTARY FIGURE 2. PROGRESSION-FREE SURVIVAL AND OVERALL SURVIVAL IN DIFFERENT GROUPS OF PATIENTS (NO STATISTICAL SIGNIFICANCE WAS OBSERVED).....	3
SUPPLEMENTARY FIGURE 3. PEAK CAR-T CELL EXPOSURE IN DIFFERENT GROUPS OF PATIENTS (NO STATISTICAL SIGNIFICANCE WAS OBSERVED).	4
SUPPLEMENTARY FIGURE 4. PFS IS NOT ASSOCIATED WITH PROLONGED B CELL APLASIA (NO STATISTICAL SIGNIFICANCE WAS OBSERVED).	5
SUPPLEMENTARY TABLES	6
SUPPLEMENTARY TABLE 1. BASELINE CHARACTERISTICS, RESPONSES, AND TOXICITIES OF EACH PATIENT.....	6

Supplementary Figures

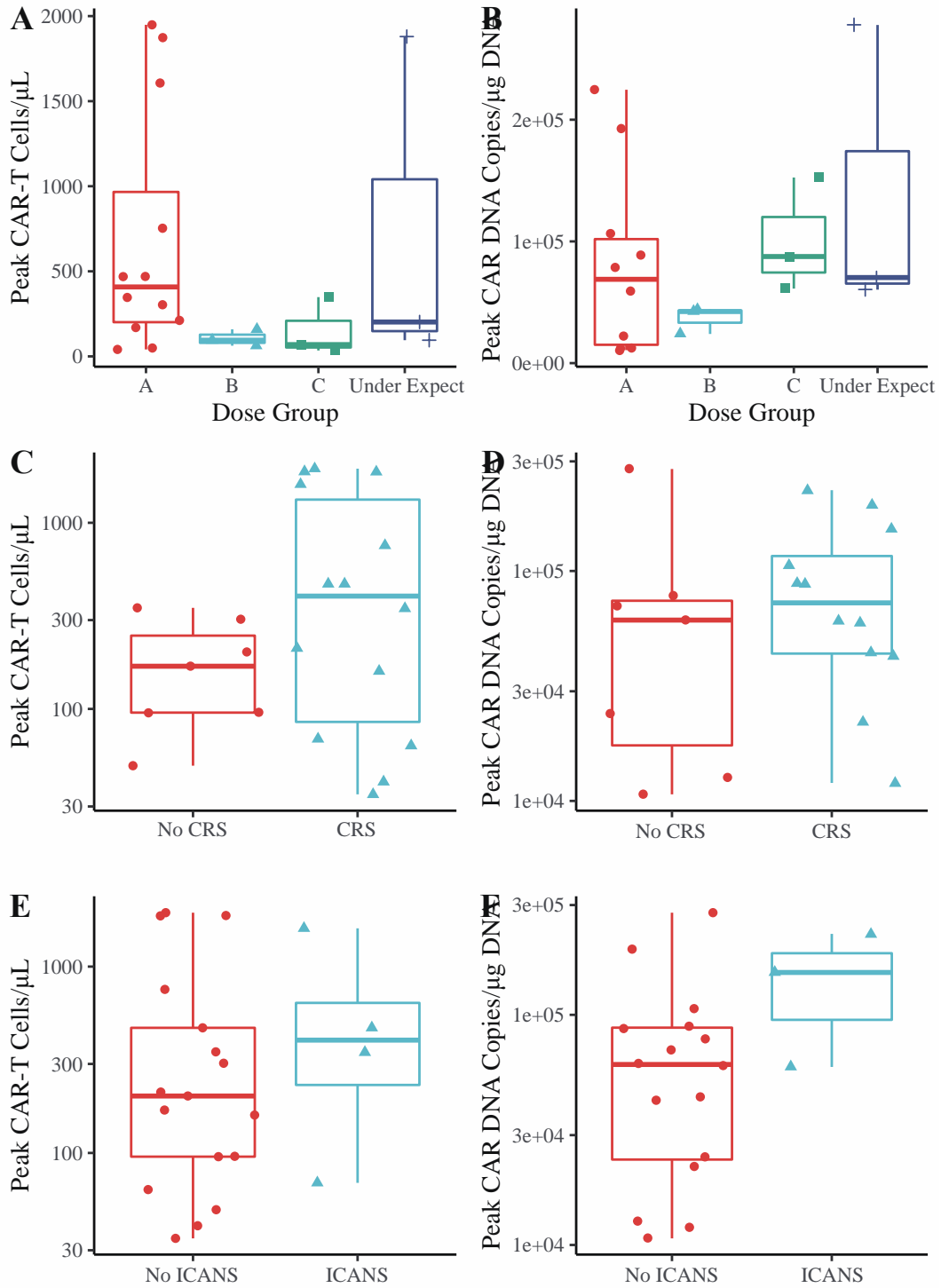
Supplementary Figure 1. The Dynamic Fluctuation of Cytokines in Representative Patients with or without CRS



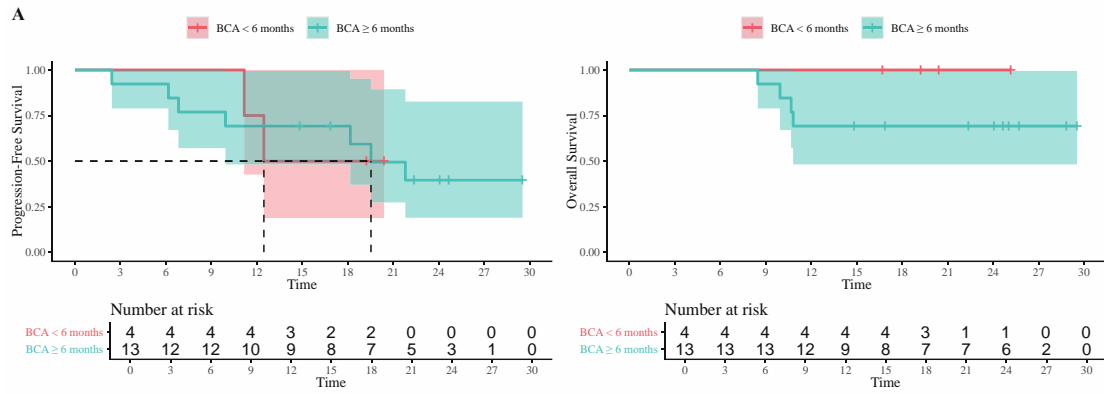
Supplementary Figure 2. Progression-Free Survival and Overall Survival in Different Groups of Patients (No statistical significance was observed).



Supplementary Figure 3. Peak CAR-T cell Exposure in Different Groups of Patients (No statistical significance was observed).



Supplementary Figure 4. PFS is not associated with prolonged B cell aplasia (No statistical significance was observed).



Supplementary Tables

Supplementary Table 1. Baseline Characteristics, Responses, and Toxicities of Each Patient.

Patient ID	Age (yr.)	Sex	Disease Type	Disease Stage*	Risk Stratification [§]	PD-L1 Expression (%)	Prior Therapies	CAR-T Dose ($\times 10^6$ /kg)	Dose Group	Best Response	PFS (days)	OS (days)	CRS [‡]	ICANS [¶]
1	44	Male	DLBCL	4	High intermediate	80	6 (including PD-1/PD-L1 mAb)	0.56	D	CR	886	886	Grade 1	None
2	53	Male	DLBCL	3	High intermediate	10	4	2.04	A	CR	654	865	Grade 1	None
3	59	Male	DLBCL	4	High intermediate	80	3	1.95	A	PR	52	377	Grade 1	None
4	46	Male	DLBCL	4	High intermediate	5	9 (including auto-HSCT)	0.80	D	CR	545	771	None	None
5	43	Female	B-LBL	4	Poor risk	5	4	0.76	D	CR	185	324	None	None
6	64	Female	DLBCL	4	High	2	5	2.35	A	CR	586	751	Grade 2	None
7	62	Female	DLBCL	3	High intermediate	15	1	2.15	A	CR	374	755	None	None
8	51	Female	FL	4	High	5	5	2.00	A	CR	740	740	None	None
9	56	Male	MCL	2	High	Negative	3	4.00	B	CR	722	722	None	None
10	36	Female	DLBCL	4	High intermediate	Negative	3	4.40	B	PR	73	254	Grade 1	None
11	36	Male	DLBCL	4	Low intermediate	Not available	4	4.00	B	CR	671	671	Grade 1	None
12	57	Female	DLBCL	4	High intermediate	Not available	5	5.40	C	CR	656	656	None	None
13	34	Female	DLBCL	2	Low	Negative	5	6.10	C	CR	91	558	Grade 1	None
14	68	Male	DLBCL	4	High	60	3	5.20	C	CR	612	612	None	Grade 1
15	67	Female	DLBCL	4	High	Not available	5	2.60	A	PR	577	577	None	None

16	47	Male	DLBCL	4	High intermediate	5	8 (including auto-HSCT and PD-1/PD-L1 mAb)	1.60	A	CR	335	501	Grade 1	None
17	62	Male	MCL	3	Intermediate	Not available	6	1.80	A	CR	506	506	Grade 1	None
18	70	Male	DLBCL	4	High intermediate	Negative	2	2.00	A	CR	298	298	Grade 1	None
19	53	Female	DLBCL	4	High intermediate	Negative	9	1.96	A	PR	43	56	Grade 2	None
20	61	Female	PCNS DLBCL	3	High	Negative	5	1.94	A	CR	205	320	Grade 1	None
21	64	Male	DLBCL	3	High	70	3	1.67	A	CR	445	445	None	None

*Staged as per Ann-Arbor Staging System pretreatment.⁵¹

§Stratified as per IPI, aalPI, MIPI, FLIPI score, or NCCN guideline for ALL pre-treatment.^{25,26,28,52}

†Graded according to the criteria of Lee *et al.*²² and American Society for Transplantation and Cellular Therapy consensus grading.²³

¶Graded according to the criteria of American Society for Transplantation and Cellular Therapy consensus grading²³.

Abbreviations: yr., year(s); DLBCL, diffuse large B cell lymphoma; MCL, mantle cell lymphoma; B-LBL, B-lymphoblastic lymphoma; FL, follicular lymphoma; PCNS DLBCL, primary central nervous system DLBCL; IPI, international prognostic index; MIPI, mantle cell lymphoma IPI; aalPI, age-adjusted IPI; FLIPI, follicular lymphoma IPI; PFS, progression-free survival; OS, overall survival; CRS, cytokine release syndrome; ICANS, immune effector cell-associated neurotoxicity syndrome; PD-1, programmed cell death protein 1; PD-L1, programmed death-ligand 1; HSCT, hematopoietic stem cell transplantation; mAb, monoclonal antibody; CR, complete response; PR, partial response; NCCN, National Comprehensive Cancer Network; ALL, acute lymphoblastic leukemia.

