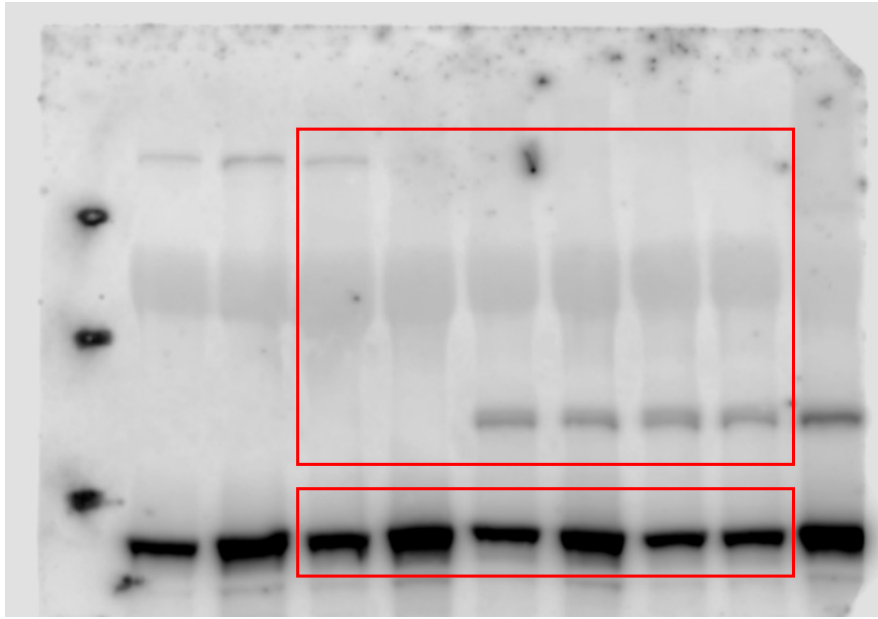


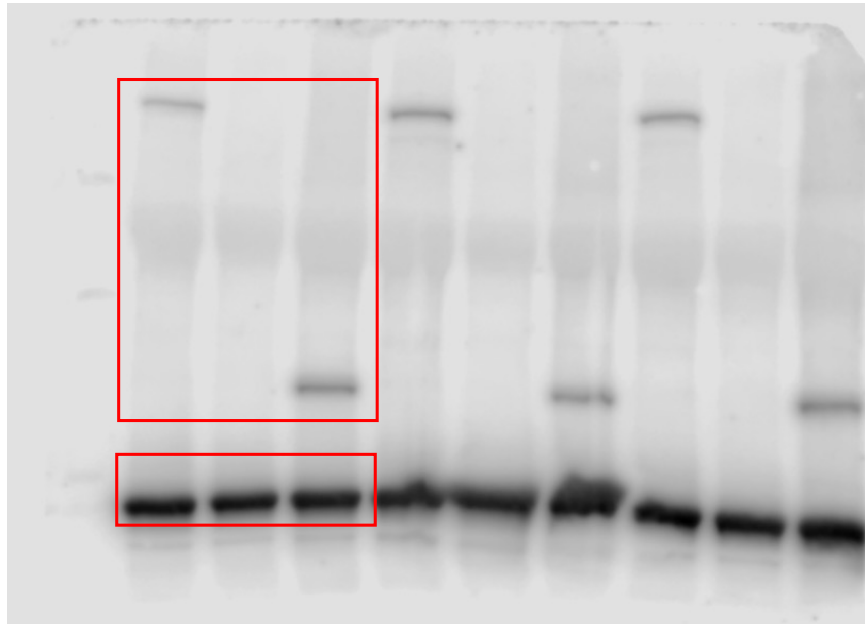
Supplementary Figure 2. Original uncropped western blots showed in Figure 1D. The red-outlined region is the cropped region shown in Figure 1. **A**, skeletal muscle; **B**, heart.

A



Skeletal muscle western blot in Figure 1D. Red-outlined area is cropped to show in the main figure.

B



Heart western blot in Figure 1E. Red-outlined area is cropped to show in the main figure.