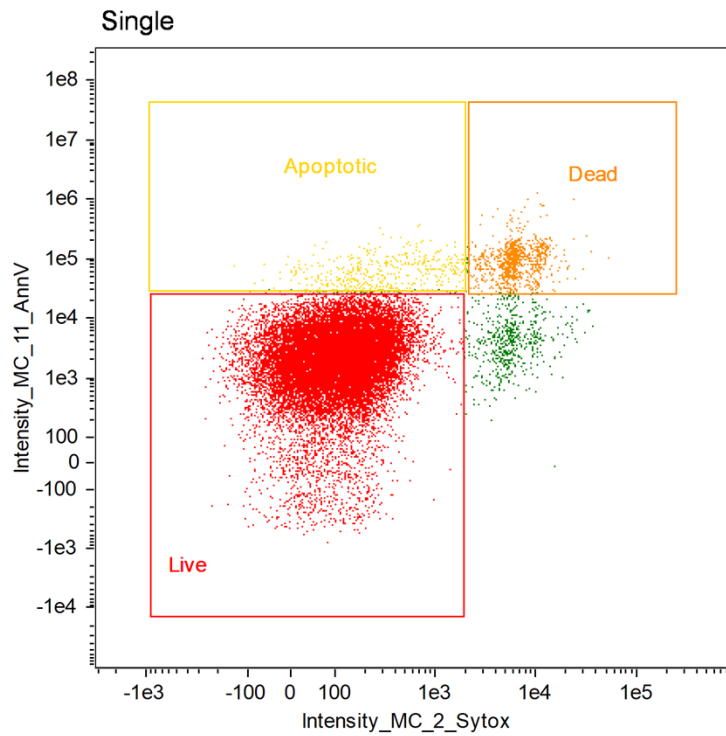


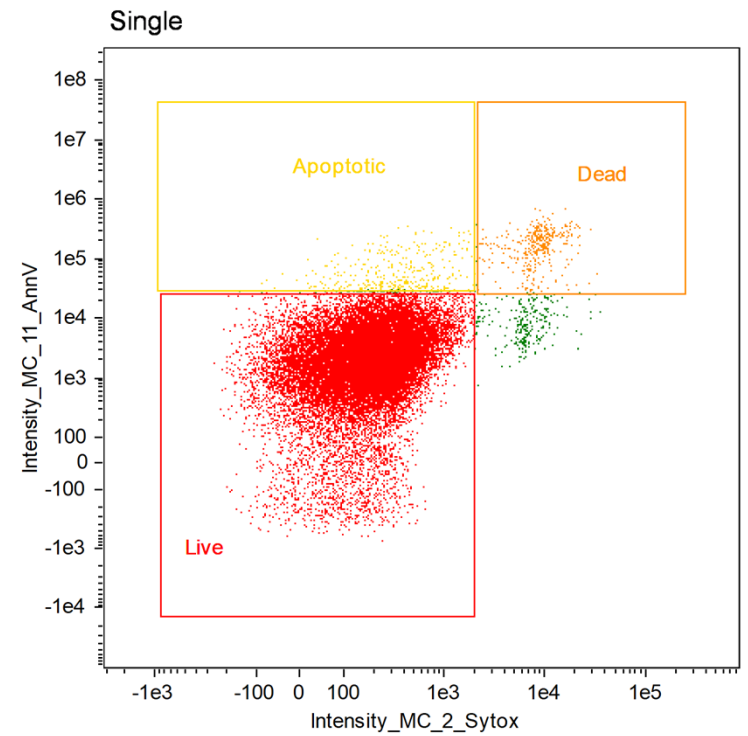
**A**



Intensity\_MC\_2\_Sytox, Intensity\_MC\_11\_AnnV

Population	Count	%Gated
Single & Focused	23139	100
Live & Single & Focused	21124	91.3
Apoptotic & Single & Focused	422	1.82
Dead & Single & Focused	972	4.2

**B**



Intensity\_MC\_2\_Sytox, Intensity\_MC\_11\_AnnV

Population	Count	%Gated
Single & Focused	23328	100
Live & Single & Focused	22296	95.6
Apoptotic & Single & Focused	332	1.42
Dead & Single & Focused	358	1.53