

## SUPPLEMENTARY MATERIALS

# Nationwide analysis of hospital admissions and outcomes of patients with SARS-CoV-2 infection in Austria in 2020 and 2021

**Paul Zajic, MD PhD**

Division of General Anaesthesiology, Emergency- and Intensive Care Medicine, Medical University of Graz, Graz, Austria

**Michael Hiesmayr, MD**

Center for Medical Statistics, Informatics and Intelligent Systems, Medical University of Vienna, Vienna, Austria

**Peter Bauer, PhD**

Center for Medical Statistics, Informatics and Intelligent Systems, Medical University of Vienna, Vienna, Austria

**David M. Baron, MD PhD**

Department of Anaesthesiology, General Intensive Care Medicine and Pain Medicine, Medical University of Vienna, Vienna, Austria

**Anastasiia Gruber, MSc**

Center for Medical Statistics, Informatics and Intelligent Systems, Medical University of Vienna, Vienna, Austria

**Michael Joannidis, MD**

Division of Intensive Care and Emergency Medicine, Department of Internal Medicine, Medical University of Innsbruck, Innsbruck, Austria

**Martin Posch, PhD**

Center for Medical Statistics, Informatics and Intelligent Systems, Medical University of Vienna, Vienna, Austria

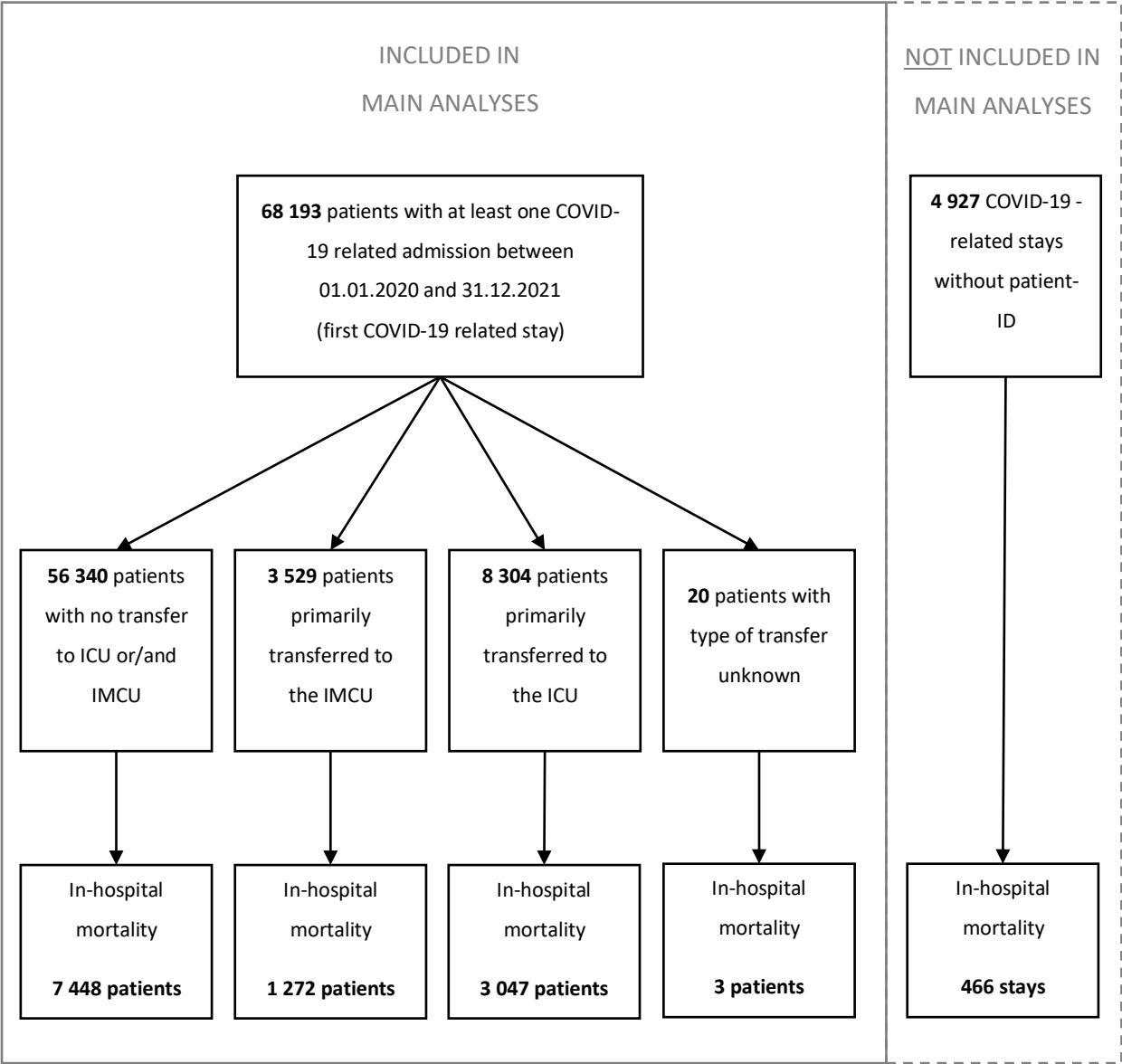
**Philipp G. H. Metnitz, MD PhD**

Division of General Anaesthesiology, Emergency- and Intensive Care Medicine, Medical University of Graz, Graz, Austria

# Table of Contents

|   |    |
|---|----|
| Figure S 1 Study Flow Chart.....  | 3  |
| Table S 1 Demographics, regional variation, and outcomes of patients admitted to hospital (upper half) and patients admitted to intermediate care units (lower half) overall and per half-years. ....   | 4  |
| Table S 2 Multivariable logistic regression analysis in all patients with COVID-19 admitted to Austrian hospitals in 2020 and 2021 ( $n=68\ 193$ ) with in-hospital mortality ( $n=11\ 770$ ) as the dependent variable including an interaction term between sex and age category. CI = confidence interval, OR = odds ratio. ....   | 5  |
| Table S 3 Multivariable logistic regression analysis in all patients with COVID-19 admitted to Austrian hospitals in 2020 and 2021 including those with missing patient identifiers ( $n=73\ 120$ ) with in-hospital mortality ( $n=12\ 236$ ) as the dependent variable. CI = confidence interval, OR = odds ratio.....  | 6  |
| Figure S 2 Unadjusted in-hospital mortality rates in all patients with COVID-19 admitted to Austrian hospitals in 2020 and 2021 ( $n=68\ 193$ ) stratified for age categories and separated for half-year of hospital admission (January 1 <sup>st</sup> , 2020 to June 22 <sup>nd</sup> , 2020, June 23 <sup>rd</sup> , 2020 to January 1 <sup>st</sup> , 2021, January 2 <sup>nd</sup> , 2021 to June 21 <sup>st</sup> , 2021, and June 22 <sup>nd</sup> , 2021 to January 1 <sup>st</sup> , 2022) and patient sex. ....          | 7  |
| Figure S 3 Boxplot comparison of Simplified Acute Physiology Score 3 (SAPS 3) values between male and female individuals. ....  | 8  |
| Figure S 4 Unadjusted in-hospital mortality rates in patients with COVID-19 primarily admitted to intensive care units in 2020 and 2021 ( $n=8\ 304$ ) stratified for age categories and separated for half-year of hospital admission (January 1 <sup>st</sup> , 2020 to June 22 <sup>nd</sup> , 2020, June 23 <sup>rd</sup> , 2020 to January 1 <sup>st</sup> , 2021, January 2 <sup>nd</sup> , 2021 to June 21 <sup>st</sup> , 2021, and June 22 <sup>nd</sup> , 2021 to January 1 <sup>st</sup> , 2022) and patient sex.....    | 9  |
| Table S 4 Multivariable logistic regression analysis in patients with COVID-19 admitted to Austrian intermediate care units in 2020 and 2021 ( $n=3\ 529$ ) with in-hospital mortality ( $n=1\ 272$ ) as the dependent variable. CI = confidence interval, OR = odds ratio. ....  | 10 |
| Figure S 5 Unadjusted in-hospital mortality rates in patients with COVID-19 primarily admitted to intermediate care units in 2020 and 2021 ( $n=3\ 529$ ) stratified for age categories and separated for half-year of hospital admission (January 1 <sup>st</sup> , 2020 to June 22 <sup>nd</sup> , 2020, June 23 <sup>rd</sup> , 2020 to January 1 <sup>st</sup> , 2021, January 2 <sup>nd</sup> , 2021 to June 21 <sup>st</sup> , 2021, and June 22 <sup>nd</sup> , 2021 to January 1 <sup>st</sup> , 2022) and patient sex..... | 11 |
| Table S 5 Multivariable logistic regression analysis in all patients with COVID-19 admitted to Austrian hospitals in 2020 and 2021 ( $n=68\ 193$ ) with primary admission to an intermediate care unit ( $n=3\ 529$ ) as the dependent variable. CI = confidence interval, OR = odds ratio. ....  | 12 |
| Table S 6 Multivariable logistic regression analysis in all patients with COVID-19 admitted to Austrian hospitals in 2020 and 2021 ( $n=68\ 193$ ) with primary admission to an intensive care unit ( $n=8\ 304$ ) as the dependent variable including an interaction term between sex and age category. CI = confidence interval, OR = odds ratio. ....  | 13 |
| Table S 7 Multivariable logistic regression analysis in all patients with COVID-19 admitted to Austrian hospitals in 2020 and 2021 ( $n=68\ 193$ ) with primary admission to an intermediate care unit ( $n=3\ 529$ ) as the dependent variable including an interaction term between sex and age category. CI = confidence interval, OR = odds ratio. ....   | 14 |

Figure S 1 Study Flow Chart



**Table S 1 Demographics, regional variation, and outcomes of patients admitted to hospital (upper half) and patients admitted to intermediate care units (lower half) overall and per half-years.**

| Variable  | Overall       | 2020         |               | 2021          |              |
|---|---------------|--------------|---------------|---------------|--------------|
|   |               | Half-year 1  | Half-year 2   | Half-year 3   | Half-year 4  |
| <b>Patients Admitted to Hospital</b>                |               |              |               |               |              |
| <i>n</i> of patients                                | 68193         | 3191         | 27409         | 20066         | 17527        |
| Sex (n, %)  |               |              |               |               |              |
| Female  | 32319 (47.4%) | 1432 (44.9%) | 13004 (47.4%) | 9462 (47.2%)  | 8421 (48.0%) |
| Male  | 35874 (52.6%) | 1759 (55.1%) | 14405 (52.6%) | 10604 (52.8%) | 9106 (52.0%) |
| Age category [years] (n, %)                         |               |              |               |               |              |
| up to 19  | 1774 (2.6%)   | 40 (1.3%)    | 511 (1.9%)    | 516 (2.6%)    | 707 (4.0%)   |
| 20 – 39   | 5361 (7.9%)   | 216 (6.8%)   | 1594 (5.8%)   | 1667 (8.3%)   | 1884 (10.7%) |
| 40 – 44   | 2041 (3.0%)   | 81 (2.5%)    | 593 (2.2%)    | 672 (3.3%)    | 695 (4.0%)   |
| 45 – 49   | 2975 (4.4%)   | 151 (4.7%)   | 879 (3.2%)    | 1030 (5.1%)   | 915 (5.2%)   |
| 50 – 54   | 4364 (6.4%)   | 210 (6.6%)   | 1471 (5.4%)   | 1466 (7.3%)   | 1217 (6.9%)  |
| 55 – 59   | 5355 (7.9%)   | 215 (6.7%)   | 1900 (6.9%)   | 1803 (9.0%)   | 1437 (8.2%)  |
| 60 – 64   | 5545 (8.1%)   | 262 (8.2%)   | 2040 (7.4%)   | 1812 (9.0%)   | 1431 (8.2%)  |
| 65 – 69   | 5811 (8.5%)   | 276 (8.6%)   | 2325 (8.5%)   | 1781 (8.9%)   | 1429 (8.2%)  |
| 70 – 74   | 7048 (10.3%)  | 334 (10.5%)  | 2975 (10.9%)  | 2077 (10.4%)  | 1662 (9.5%)  |
| 75 – 79   | 8065 (11.8%)  | 433 (13.6%)  | 3643 (13.3%)  | 2223 (11.1%)  | 1766 (10.1%) |
| 80 – 84   | 9003 (13.2%)  | 430 (13.5%)  | 4225 (15.4%)  | 2286 (11.4%)  | 2062 (11.8%) |
| 85 – 89   | 6309 (9.3%)   | 294 (9.2%)   | 3094 (11.3%)  | 1533 (7.6%)   | 1388 (7.9%)  |
| 90 and above  | 4542 (6.7%)   | 249 (7.8%)   | 2159 (7.9%)   | 1200 (6.0%)   | 934 (5.3%)   |
| Region (n, %)                                       |               |              |               |               |              |
| East  | 27952 (41.0%) | 1429 (44.8%) | 9923 (36.2%)  | 10038 (50.0%) | 6562 (37.4%) |
| North   | 18021 (26.4%) | 595 (18.6%)  | 7905 (28.8%)  | 4092 (20.4%)  | 5429 (31.0%) |
| South   | 14389 (21.1%) | 596 (18.7%)  | 6279 (22.9%)  | 4009 (20.0%)  | 3505 (20.0%) |
| West  | 7831 (11.5%)  | 571 (17.9%)  | 3302 (12.0%)  | 1927 (9.6%)   | 2031 (11.6%) |
| In-hospital mortality (n, %)                        | 11770 (17.3%) | 639 (20.0%)  | 5145 (18.8%)  | 3177 (15.8%)  | 2809 (16.0%) |
| <b>Patients Admitted to Intermediate Care Units</b> |               |              |               |               |              |
| <i>n</i> of patients                                | 3529          | 159          | 1396          | 1255          | 719          |
| Sex (n, %)  |               |              |               |               |              |
| Female  | 1316 (37.3%)  | 58 (36.5%)   | 524 (37.5%)   | 468 (37.3%)   | 266 (37.0%)  |
| Male  | 2213 (62.7%)  | 101 (63.5%)  | 872 (62.5%)   | 787 (62.7%)   | 453 (63.0%)  |
| Age category [years] (n, %)                         |               |              |               |               |              |
| up to 19  | 45 (1.3%)     | 0 (0.0%)     | 10 (0.7%)     | 18 (1.4%)     | 17 (2.4%)    |
| 20 – 39   | 162 (4.6%)    | 7 (4.4%)     | 47 (3.4%)     | 59 (4.7%)     | 49 (6.8%)    |
| 40 – 44   | 81 (2.3%)     | 2 (1.3%)     | 29 (2.1%)     | 27 (2.2%)     | 23 (3.2%)    |
| 45 – 49   | 139 (3.9%)    | 4 (2.5%)     | 39 (2.8%)     | 54 (4.3%)     | 42 (5.8%)    |
| 50 – 54   | 240 (6.8%)    | 7 (4.4%)     | 76 (5.4%)     | 92 (7.3%)     | 65 (9.0%)    |
| 55 – 59   | 335 (9.5%)    | 7 (4.4%)     | 129 (10.0%)   | 133 (10.6%)   | 66 (9.2%)    |
| 60 – 64   | 376 (10.7%)   | 17 (10.7%)   | 140 (10.4%)   | 141 (11.2%)   | 78 (10.8%)   |
| 65 – 69   | 414 (11.7%)   | 16 (10.1%)   | 145 (14.4%)   | 152 (12.1%)   | 101 (14.0%)  |
| 70 – 74   | 515 (14.6%)   | 32 (20.1%)   | 201 (16.0%)   | 186 (14.8%)   | 96 (13.4%)   |
| 75 – 79   | 511 (14.5%)   | 35 (22.0%)   | 223 (16.0%)   | 183 (14.6%)   | 70 (9.7%)    |
| 80 – 84   | 456 (12.9%)   | 18 (11.3%)   | 224 (16.0%)   | 138 (11.0%)   | 76 (10.6%)   |
| 85 – 89   | 182 (5.2%)    | 8 (5.0%)     | 101 (7.2%)    | 45 (3.6%)     | 28 (3.9%)    |
| 90 and above  | 73 (2.1%)     | 6 (3.8%)     | 32 (2.3%)     | 27 (2.2%)     | 8 (1.1%)     |
| Region (n, %)                                       |               |              |               |               |              |
| East  | 2427 (68.8%)  | 108 (67.9%)  | 908 (65.0%)   | 942 (75.1%)   | 469 (65.2%)  |
| North   | 415 (11.8%)   | 13 (8.2%)    | 197 (14.1%)   | 108 (8.6%)    | 97 (13.5%)   |
| South   | 396 (11.2%)   | 7 (4.4%)     | 174 (12.5%)   | 139 (11.1%)   | 76 (10.6%)   |
| West  | 291 (8.2%)    | 31 (19.5%)   | 117 (8.4%)    | 66 (5.3%)     | 77 (10.7%)   |
| In-hospital mortality (n, %)                        | 1272 (36.0%)  | 55 (34.6%)   | 517 (37.0%)   | 441 (35.1%)   | 259 (36.0%)  |

**Table S 2 Multivariable logistic regression analysis in all patients with COVID-19 admitted to Austrian hospitals in 2020 and 2021 (n=68 193) with in-hospital mortality (n=11 770) as the dependent variable including an interaction term between sex and age category. CI = confidence interval, OR = odds ratio.**

| Variable                        | OR   | 95% CI |       | p      |
|---------------------------------|------|--------|-------|--------|
| Sex                             |      |        |       |        |
| Female                          | 1.00 |        |       |        |
| Male                            | 1.58 | 1.31   | 1.91  | <0.001 |
| Age category [years]            |      |        |       |        |
| up to 19                        | 0.02 | 0.01   | 0.09  | <0.001 |
| 20 – 39                         | 0.08 | 0.05   | 0.13  | <0.001 |
| 40 – 44                         | 0.21 | 0.13   | 0.36  | <0.001 |
| 45 – 49                         | 0.29 | 0.19   | 0.42  | <0.001 |
| 50 – 54                         | 0.37 | 0.27   | 0.51  | <0.001 |
| 55 – 59                         | 0.56 | 0.43   | 0.73  | <0.001 |
| 60 – 64                         | 1.00 |        |       |        |
| 65 – 69                         | 1.43 | 1.17   | 1.76  | <0.001 |
| 70 – 74                         | 1.96 | 1.62   | 2.36  | <0.001 |
| 75 – 79                         | 2.54 | 2.12   | 3.04  | <0.001 |
| 80 – 84                         | 3.25 | 2.73   | 3.86  | <0.001 |
| 85 – 89                         | 4.91 | 4.13   | 5.84  | <0.001 |
| 90 and above                    | 7.71 | 6.48   | 9.18  | <0.001 |
| Interaction: Sex × Age category |      |        |       |        |
| sex × up to 19                  | 2.64 | 0.60   | 11.63 | 0.20   |
| sex × 20-39                     | 1.38 | 0.79   | 2.41  | 0.26   |
| sex × 40-44                     | 0.93 | 0.50   | 1.74  | 0.82   |
| sex × 45-49                     | 0.65 | 0.39   | 1.08  | 0.10   |
| sex × 50-54                     | 1.00 | 0.69   | 1.46  | 0.99   |
| sex × 55-59                     | 0.97 | 0.71   | 1.33  | 0.87   |
| sex × 60-64                     | 1.00 |        |       |        |
| sex × 65-69                     | 0.99 | 0.77   | 1.26  | 0.92   |
| sex × 70-74                     | 1.07 | 0.85   | 1.34  | 0.57   |
| sex × 75-79                     | 1.07 | 0.86   | 1.33  | 0.56   |
| sex × 80-84                     | 1.15 | 0.93   | 1.43  | 0.18   |
| sex × 85-89                     | 1.07 | 0.86   | 1.33  | 0.53   |
| sex × 90 and above              | 1.00 | 0.80   | 1.25  | 0.98   |
| Half-year                       |      |        |       |        |
| Half-year 1                     | 1.15 | 1.04   | 1.27  | 0.01   |
| Half-year 2                     | 1.00 |        |       |        |
| Half-year 3                     | 0.96 | 0.91   | 1.01  | 0.16   |
| Half-year 4                     | 1.11 | 1.05   | 1.17  | <0.001 |
| Region                          |      |        |       |        |
| East                            | 1.00 |        |       |        |
| North                           | 0.67 | 0.58   | 0.77  | <0.001 |
| South                           | 0.87 | 0.75   | 1.00  | 0.05   |
| West                            | 0.62 | 0.52   | 0.73  | <0.001 |

**Table S 3 Multivariable logistic regression analysis in all patients with COVID-19 admitted to Austrian hospitals in 2020 and 2021 including those with missing patient identifiers (n=73 120) with in-hospital mortality (n=12 236) as the dependent variable. CI = confidence interval, OR = odds ratio**

| Variable             | OR   | 95% CI |      | <i>p</i> |
|----------------------|------|--------|------|----------|
| Sex                  |      |        |      |          |
| Female               | 1.00 |        |      |          |
| Male                 | 1.67 | 1.60   | 1.74 | <0.001   |
| Age category [years] |      |        |      |          |
| up to 19             | 0.05 | 0.03   | 0.09 | <0.001   |
| 20 – 39              | 0.10 | 0.08   | 0.13 | <0.001   |
| 40 – 44              | 0.20 | 0.15   | 0.27 | <0.001   |
| 45 – 49              | 0.23 | 0.19   | 0.29 | <0.001   |
| 50 – 54              | 0.38 | 0.32   | 0.45 | <0.001   |
| 55 – 59              | 0.56 | 0.48   | 0.64 | <0.001   |
| 60 – 64              | 1.00 |        |      |          |
| 65 – 69              | 1.44 | 1.29   | 1.61 | <0.001   |
| 70 – 74              | 2.05 | 1.85   | 2.27 | <0.001   |
| 75 – 79              | 2.65 | 2.40   | 2.92 | <0.001   |
| 80 – 84              | 3.58 | 3.25   | 3.95 | <0.001   |
| 85 – 89              | 5.18 | 4.68   | 5.72 | <0.001   |
| 90 and above         | 7.80 | 7.03   | 8.65 | <0.001   |
| Half-year            |      |        |      |          |
| Half-year 1          | 1.11 | 1.01   | 1.22 | 0.04     |
| Half-year 2          | 1.00 |        |      |          |
| Half-year 3          | 0.97 | 0.92   | 1.02 | 0.19     |
| Half-year 4          | 1.12 | 1.06   | 1.18 | <0.001   |
| Region               |      |        |      |          |
| East                 | 1.00 |        |      |          |
| North                | 0.66 | 0.58   | 0.77 | <0.001   |
| South                | 0.87 | 0.76   | 1.01 | 0.06     |
| West                 | 0.60 | 0.51   | 0.71 | <0.001   |

**Figure S 2 Unadjusted in-hospital mortality rates in all patients with COVID-19 admitted to Austrian hospitals in 2020 and 2021 ( $n=68\ 193$ ) stratified for age categories and separated for half-year of hospital admission (January 1<sup>st</sup>, 2020 to June 22<sup>nd</sup>, 2020, June 23<sup>rd</sup>, 2020 to January 1<sup>st</sup>, 2021, January 2<sup>nd</sup>, 2021 to June 21<sup>st</sup>, 2021, and June 22<sup>nd</sup>, 2021 to January 1<sup>st</sup>, 2022) and patient sex.**

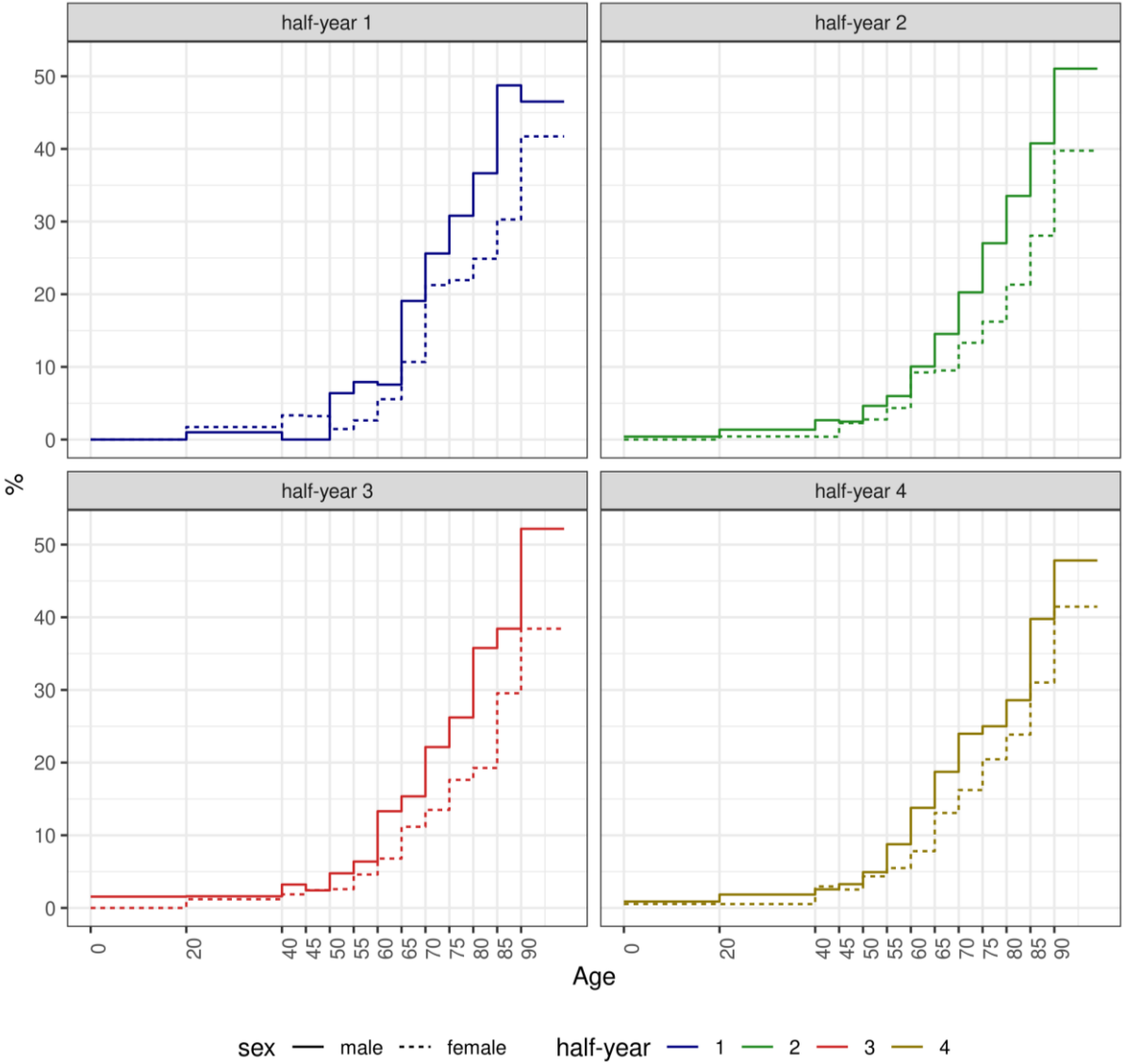
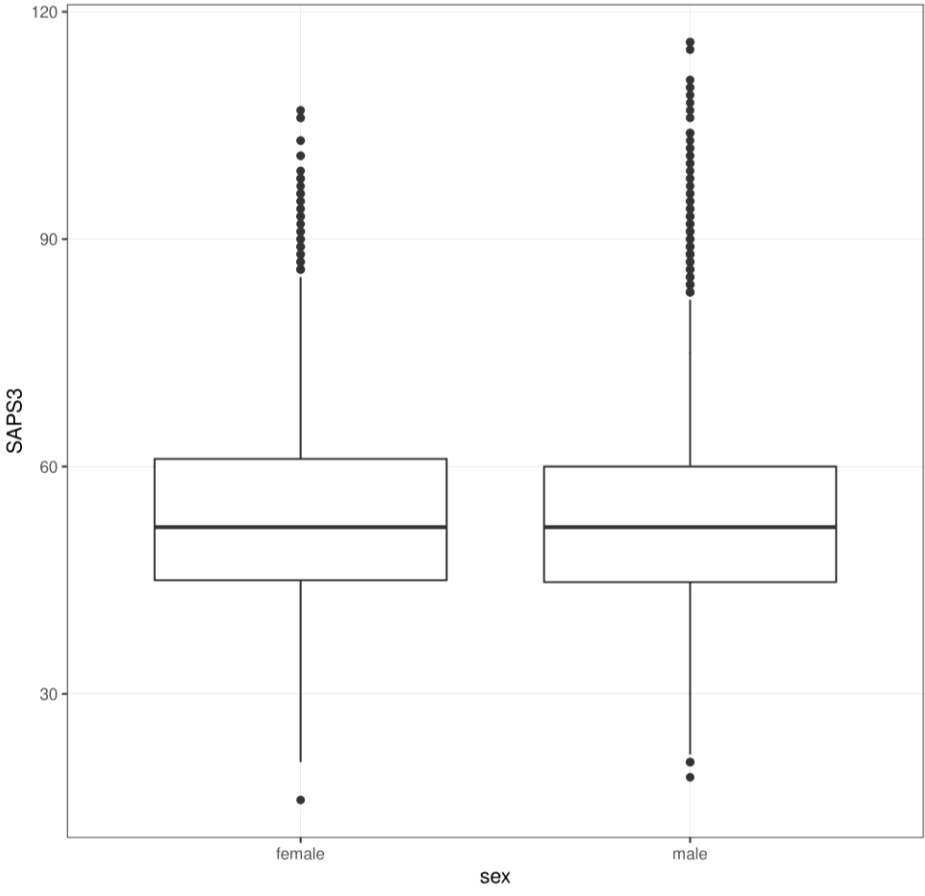
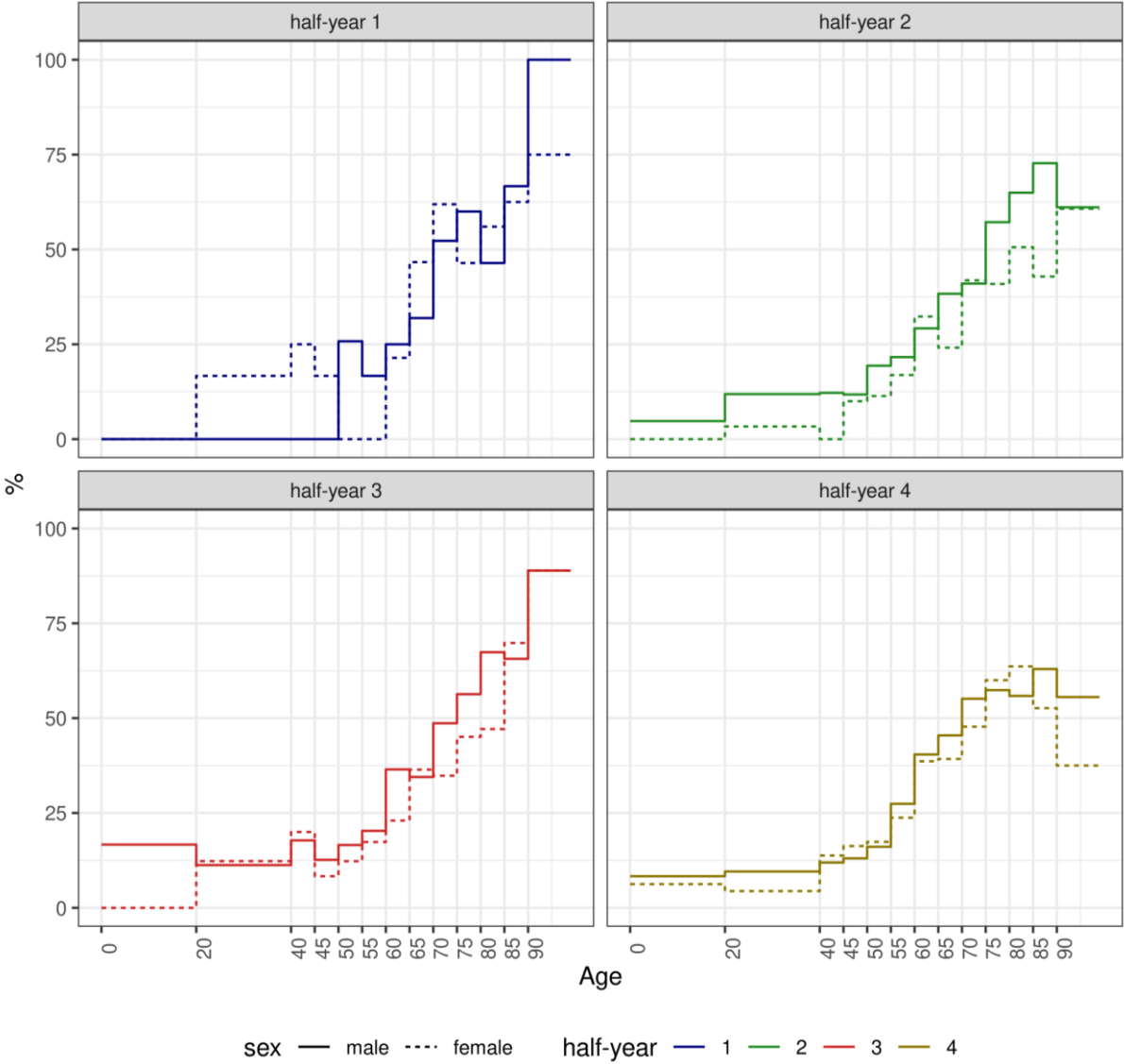


Figure S 3 Boxplot comparison of Simplified Acute Physiology Score 3 (SAPS 3) values between male and female individuals.





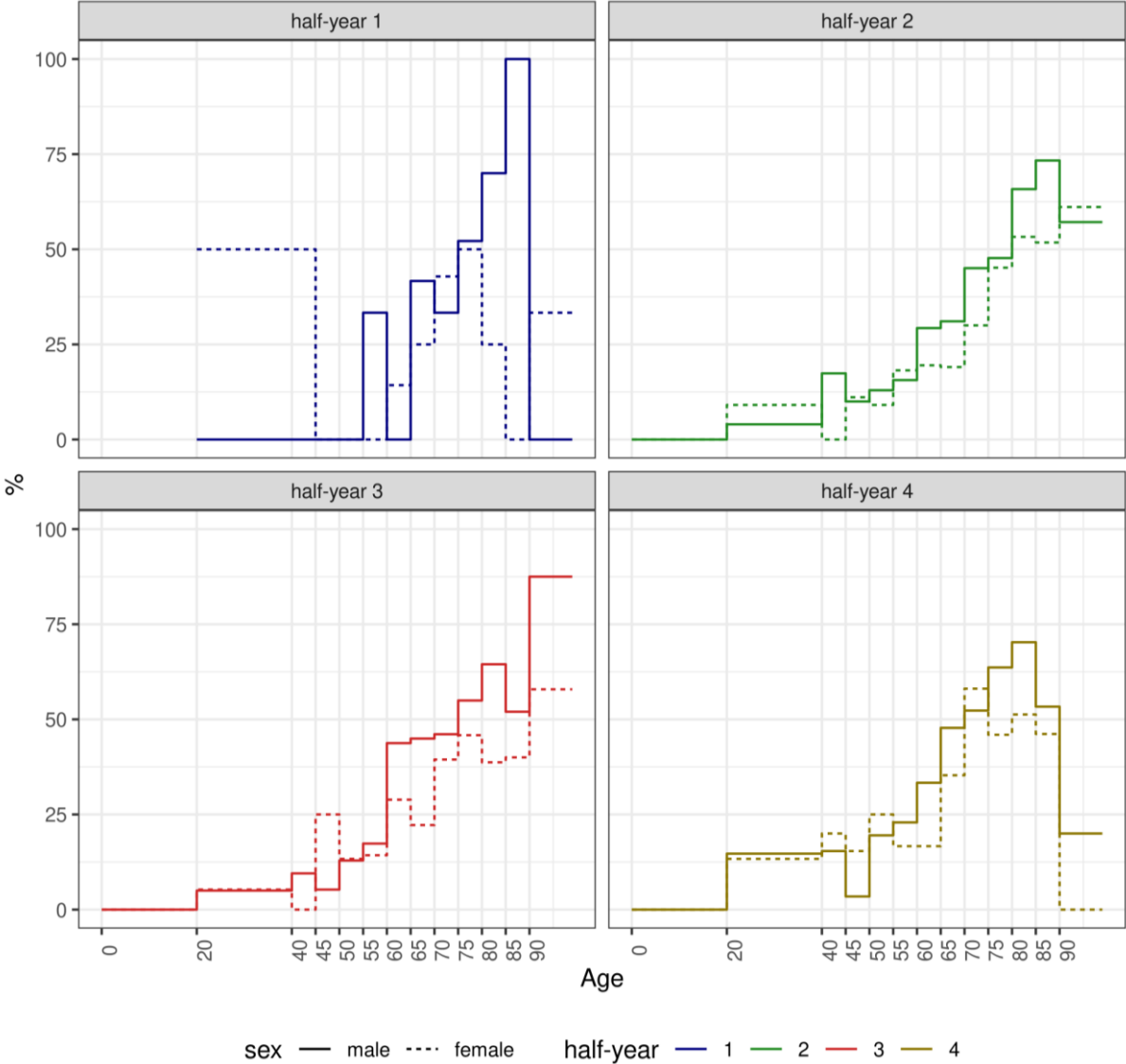
**Figure S 4 Unadjusted in-hospital mortality rates in patients with COVID-19 primarily admitted to intensive care units in 2020 and 2021 ( $n=8\ 304$ ) stratified for age categories and separated for half-year of hospital admission (January 1<sup>st</sup>, 2020 to June 22<sup>nd</sup>, 2020, June 23<sup>rd</sup>, 2020 to January 1<sup>st</sup>, 2021, January 2<sup>nd</sup>, 2021 to June 21<sup>st</sup>, 2021, and June 22<sup>nd</sup>, 2021 to January 1<sup>st</sup>, 2022) and patient sex.**



**Table S 4 Multivariable logistic regression analysis in patients with COVID-19 admitted to Austrian intermediate care units in 2020 and 2021 (n=3 529) with in-hospital mortality (n=1 272) as the dependent variable. CI = confidence interval, OR = odds ratio.**

| Variable             | OR   | 95% CI |      | <i>p</i> |
|----------------------|------|--------|------|----------|
| Sex                  |      |        |      |          |
| Female               | 1.00 |        |      |          |
| Male                 | 1.53 | 1.31   | 1.79 | <0.001   |
| Age category [years] |      |        |      |          |
| 20 – 39              | 0.21 | 0.12   | 0.39 | <0.001   |
| 40 – 44              | 0.29 | 0.14   | 0.58 | <0.001   |
| 45 – 49              | 0.22 | 0.12   | 0.40 | <0.001   |
| 50 – 54              | 0.36 | 0.24   | 0.56 | <0.001   |
| 55 – 59              | 0.46 | 0.32   | 0.66 | <0.001   |
| 60 – 64              | 1.00 |        |      |          |
| 65 – 69              | 1.23 | 0.91   | 1.66 | 0.19     |
| 70 – 74              | 1.85 | 1.39   | 2.45 | <0.001   |
| 75 – 79              | 2.53 | 1.90   | 3.37 | <0.001   |
| 80 – 84              | 3.58 | 2.66   | 4.81 | <0.001   |
| 85 and above         | 3.41 | 2.43   | 4.80 | <0.001   |
| Half-year            |      |        |      |          |
| Half-year 1          | 0.88 | 0.60   | 1.27 | 0.48     |
| Half-year 2          | 1.00 |        |      |          |
| Half-year 3          | 1.09 | 0.91   | 1.29 | 0.36     |
| Half-year 4          | 1.33 | 1.08   | 1.63 | 0.01     |
| Region               |      |        |      |          |
| East                 | 1.00 |        |      |          |
| North                | 0.82 | 0.58   | 1.18 | 0.29     |
| South                | 0.80 | 0.56   | 1.15 | 0.23     |
| West                 | 0.88 | 0.59   | 1.30 | 0.51     |

**Figure S 5 Unadjusted in-hospital mortality rates in patients with COVID-19 primarily admitted to intermediate care units in 2020 and 2021 ( $n=3\ 529$ ) stratified for age categories and separated for half-year of hospital admission (January 1<sup>st</sup>, 2020 to June 22<sup>nd</sup>, 2020, June 23<sup>rd</sup>, 2020 to January 1<sup>st</sup>, 2021, January 2<sup>nd</sup>, 2021 to June 21<sup>st</sup>, 2021, and June 22<sup>nd</sup>, 2021 to January 1<sup>st</sup>, 2022) and patient sex.**



**Table S 5 Multivariable logistic regression analysis in all patients with COVID-19 admitted to Austrian hospitals in 2020 and 2021 (n=68 193) with primary admission to an intermediate care unit (n=3 529) as the dependent variable. CI = confidence interval, OR = odds ratio.**

| Variable             | OR   | 95% CI |      | <i>p</i> |
|----------------------|------|--------|------|----------|
| Sex                  |      |        |      |          |
| Female               | 1.00 |        |      |          |
| Male                 | 1.46 | 1.36   | 1.57 | <0.001   |
| Age category [years] |      |        |      |          |
| 19 and below         | 0.38 | 0.28   | 0.53 | <0.001   |
| 20 – 39              | 0.44 | 0.36   | 0.53 | <0.001   |
| 40 – 44              | 0.54 | 0.42   | 0.70 | <0.001   |
| 45 – 49              | 0.63 | 0.51   | 0.77 | <0.001   |
| 50 – 54              | 0.78 | 0.66   | 0.93 | 0.004    |
| 55 – 59              | 0.89 | 0.76   | 1.04 | 0.14     |
| 60 – 64              | 1.00 |        |      |          |
| 65 – 69              | 1.07 | 0.92   | 1.24 | 0.40     |
| 70 – 74              | 1.13 | 0.98   | 1.31 | 0.09     |
| 75 – 79              | 0.97 | 0.84   | 1.11 | 0.64     |
| 80 – 84              | 0.79 | 0.68   | 0.91 | 0.001    |
| 85 – 89              | 0.44 | 0.36   | 0.53 | <0.001   |
| 90 and above         | 0.24 | 0.18   | 0.31 | <0.001   |
| Half-year            |      |        |      |          |
| Half-year 1          | 0.91 | 0.76   | 1.08 | 0.27     |
| Half-year 2          | 1.00 |        |      |          |
| Half-year 3          | 1.04 | 0.96   | 1.13 | 0.35     |
| Half-year 4          | 0.77 | 0.70   | 0.85 | <0.001   |
| Region               |      |        |      |          |
| East                 | 1.00 |        |      |          |
| North                | 0.15 | 0.06   | 0.39 | <0.001   |
| South                | 0.22 | 0.09   | 0.58 | 0.002    |
| West                 | 0.32 | 0.11   | 0.90 | 0.03     |

**Table S 6 Multivariable logistic regression analysis in all patients with COVID-19 admitted to Austrian hospitals in 2020 and 2021 (n=68 193) with primary admission to an intensive care unit (n=8 304) as the dependent variable including an interaction term between sex and age category. CI = confidence interval, OR = odds ratio.**

| Variable                        | OR   | 95% CI |      | p      |
|---------------------------------|------|--------|------|--------|
| Sex                             |      |        |      |        |
| Female                          | 1.00 |        |      |        |
| Male                            | 1.52 | 1.31   | 1.77 | <0.001 |
| Age category [years]            |      |        |      |        |
| up to 19                        | 0.35 | 0.26   | 0.48 | <0.001 |
| 20 – 39                         | 0.34 | 0.28   | 0.42 | <0.001 |
| 40 – 44                         | 0.55 | 0.42   | 0.72 | <0.001 |
| 45 – 49                         | 0.55 | 0.44   | 0.70 | <0.001 |
| 50 – 54                         | 0.73 | 0.59   | 0.89 | <0.001 |
| 55 – 59                         | 0.88 | 0.73   | 1.05 | 0.16   |
| 60 – 64                         | 1.00 |        |      |        |
| 65 – 69                         | 1.15 | 0.98   | 1.36 | 0.09   |
| 70 – 74                         | 1.04 | 0.88   | 1.22 | 0.64   |
| 75 – 79                         | 0.79 | 0.67   | 0.93 | <0.001 |
| 80 – 84                         | 0.51 | 0.44   | 0.61 | <0.001 |
| 85 – 89                         | 0.26 | 0.21   | 0.31 | <0.001 |
| 90 and above                    | 0.11 | 0.08   | 0.14 | <0.001 |
| Interaction: Sex × Age category |      |        |      |        |
| sex × up to 19                  | 0.84 | 0.56   | 1.27 | 0.41   |
| sex × 20-39                     | 1.34 | 1.04   | 1.73 | 0.02   |
| sex × 40-44                     | 1.10 | 0.80   | 1.53 | 0.56   |
| sex × 45-49                     | 1.26 | 0.95   | 1.67 | 0.11   |
| sex × 50-54                     | 1.09 | 0.86   | 1.39 | 0.46   |
| sex × 55-59                     | 1.05 | 0.85   | 1.31 | 0.64   |
| sex × 60-64                     |      |        |      |        |
| sex × 65-69                     | 0.98 | 0.80   | 1.20 | 0.85   |
| sex × 70-74                     | 0.98 | 0.80   | 1.19 | 0.85   |
| sex × 75-79                     | 0.92 | 0.76   | 1.13 | 0.43   |
| sex × 80-84                     | 1.14 | 0.93   | 1.40 | 0.22   |
| sex × 85-89                     | 0.94 | 0.71   | 1.25 | 0.68   |
| sex × 90 and above              | 0.91 | 0.58   | 1.43 | 0.69   |
| Half-year                       |      |        |      |        |
| Half-year 1                     | 1.38 | 1.24   | 1.54 | <0.001 |
| Half-year 2                     | 1.00 |        |      |        |
| Half-year 3                     | 1.25 | 1.18   | 1.33 | <0.001 |
| Half-year 4                     | 1.25 | 1.17   | 1.32 | <0.001 |
| Region                          |      |        |      |        |
| East                            | 1.00 |        |      |        |
| North                           | 1.33 | 0.97   | 1.82 | 0.08   |
| South                           | 1.78 | 1.30   | 2.44 | <0.001 |
| West                            | 1.48 | 1.05   | 2.10 | 0.03   |

**Table S 7 Multivariable logistic regression analysis in all patients with COVID-19 admitted to Austrian hospitals in 2020 and 2021 (n=68 193) with primary admission to an intermediate care unit (n=3 529) as the dependent variable including an interaction term between sex and age category. CI = confidence interval, OR = odds ratio.**

| Variable                        | OR   | 95% CI |      | p      |
|---------------------------------|------|--------|------|--------|
| Sex                             |      |        |      |        |
| Female                          | 1.00 |        |      |        |
| Male                            | 1.47 | 1.17   | 1.85 | <0.001 |
| Age category [years]            |      |        |      |        |
| up to 19                        | 0.41 | 0.25   | 0.66 | <0.001 |
| 20 – 39                         | 0.32 | 0.23   | 0.44 | <0.001 |
| 40 – 44                         | 0.46 | 0.29   | 0.72 | <0.001 |
| 45 – 49                         | 0.57 | 0.40   | 0.83 | <0.001 |
| 50 – 54                         | 0.83 | 0.62   | 1.12 | 0.23   |
| 55 – 59                         | 0.75 | 0.56   | 0.99 | 0.05   |
| 60 – 64                         | 1.00 |        |      |        |
| 65 – 69                         | 1.10 | 0.85   | 1.42 | 0.46   |
| 70 – 74                         | 1.14 | 0.89   | 1.45 | 0.30   |
| 75 – 79                         | 1.05 | 0.83   | 1.33 | 0.66   |
| 80 – 84                         | 0.87 | 0.69   | 1.10 | 0.26   |
| 85 – 89                         | 0.45 | 0.34   | 0.60 | <0.001 |
| 90 and above                    | 0.24 | 0.17   | 0.35 | <0.001 |
| Interaction: Sex × Age category |      |        |      |        |
| sex × up to 19                  | 0.91 | 0.48   | 1.72 | 0.78   |
| sex × 20-39                     | 1.74 | 1.17   | 2.59 | 0.01   |
| sex × 40-44                     | 1.29 | 0.75   | 2.24 | 0.36   |
| sex × 45-49                     | 1.15 | 0.74   | 1.78 | 0.54   |
| sex × 50-54                     | 0.90 | 0.63   | 1.30 | 0.59   |
| sex × 55-59                     | 1.28 | 0.91   | 1.80 | 0.16   |
| sex × 60-64                     | 1.00 |        |      |        |
| sex × 65-69                     | 0.95 | 0.70   | 1.30 | 0.75   |
| sex × 70-74                     | 0.99 | 0.74   | 1.34 | 0.97   |
| sex × 75-79                     | 0.87 | 0.65   | 1.16 | 0.33   |
| sex × 80-84                     | 0.82 | 0.61   | 1.11 | 0.20   |
| sex × 85-89                     | 0.95 | 0.65   | 1.38 | 0.79   |
| sex × 90 and above              | 0.94 | 0.56   | 1.58 | 0.81   |
| Half-year                       |      |        |      |        |
| Half-year 1                     | 0.91 | 0.76   | 1.08 | 0.26   |
| Half-year 2                     | 1.00 |        |      |        |
| Half-year 3                     | 1.04 | 0.96   | 1.13 | 0.37   |
| Half-year 4                     | 0.77 | 0.70   | 0.85 | <0.001 |
| Region                          |      |        |      |        |
| East                            | 1.00 |        |      |        |
| North                           | 0.15 | 0.06   | 0.39 | <0.001 |
| South                           | 0.22 | 0.09   | 0.58 | <0.001 |
| West                            | 0.32 | 0.11   | 0.89 | 0.03   |