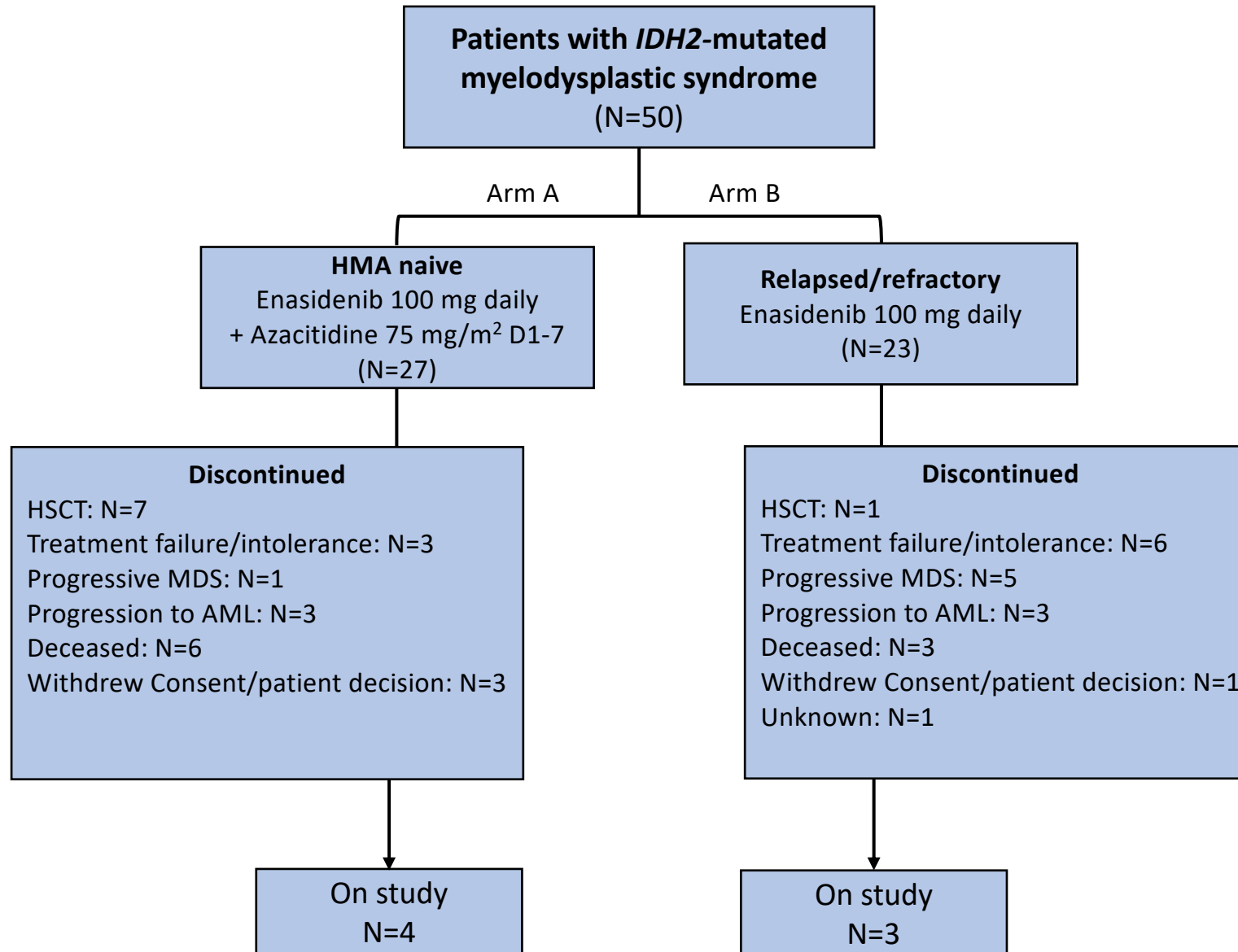
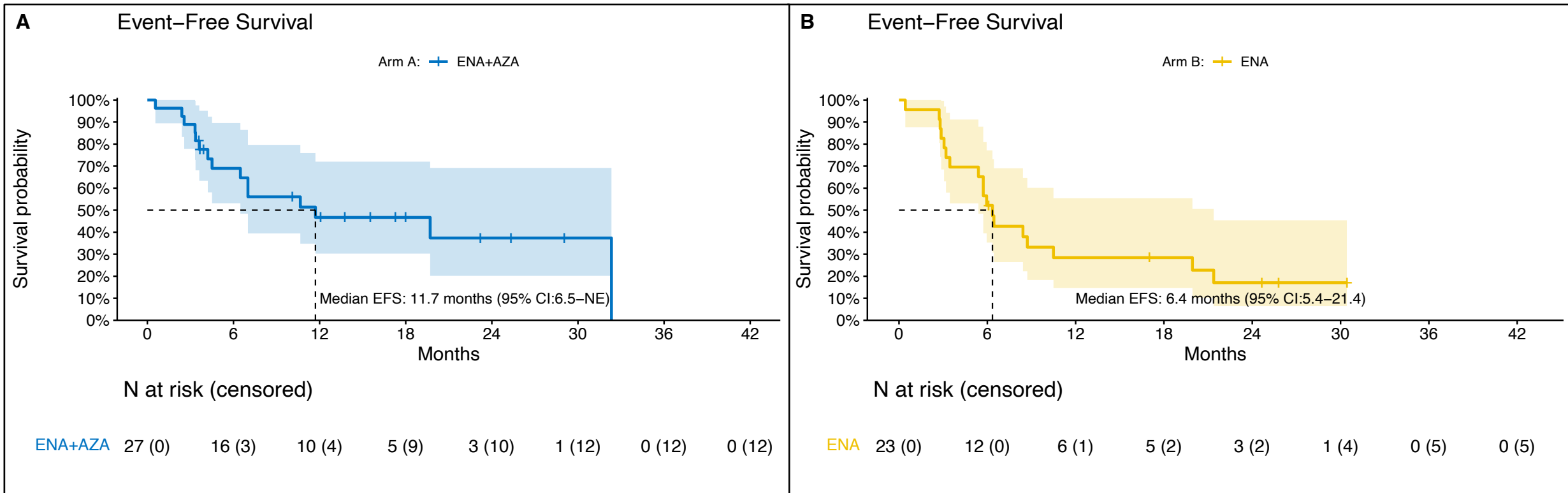
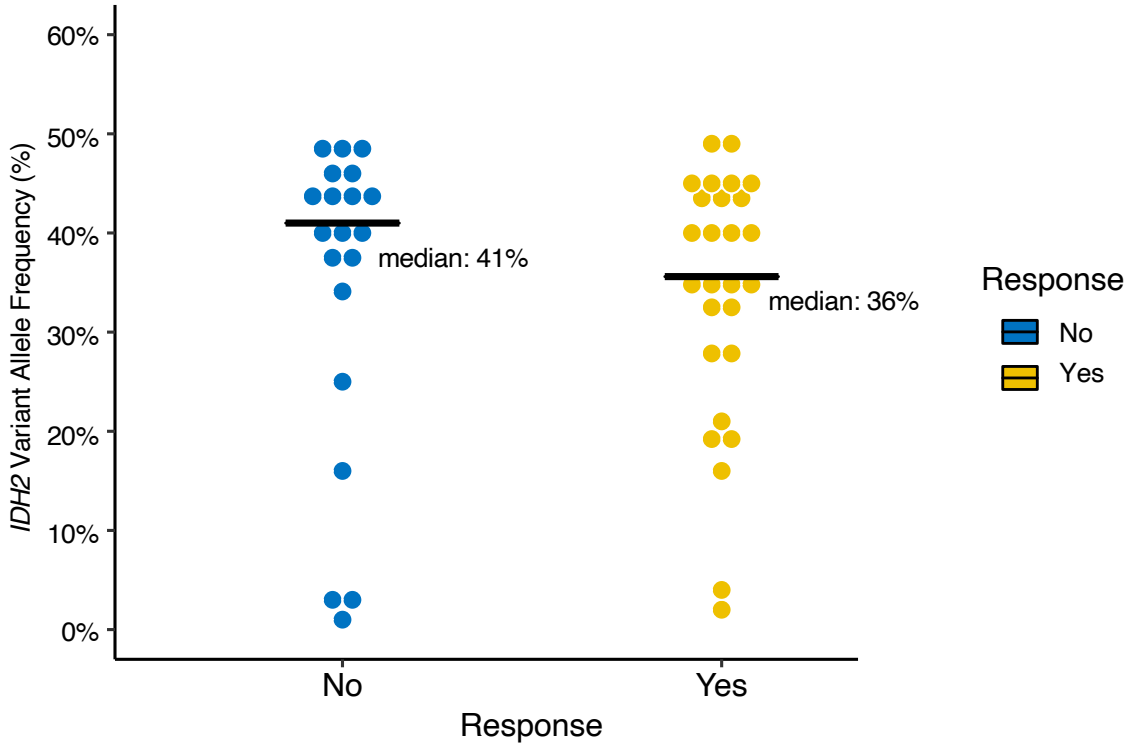


Supplementary Figure\*\*\*: CONSORT diagram of study cohorts and treatment until data-cut off on September 1<sup>st</sup>, 2021



**Supplementary Figure:** Event free survival in patients treated within Arm A (ENA+AZA) and Arm B (ENA alone).





**Supplementary Figure:** Variant allele frequency by IDH isoform in patients with R140 or R172 IDH variants. No significant difference existed between VAFs (Wilcoxon-test; p-value: 0.50).

