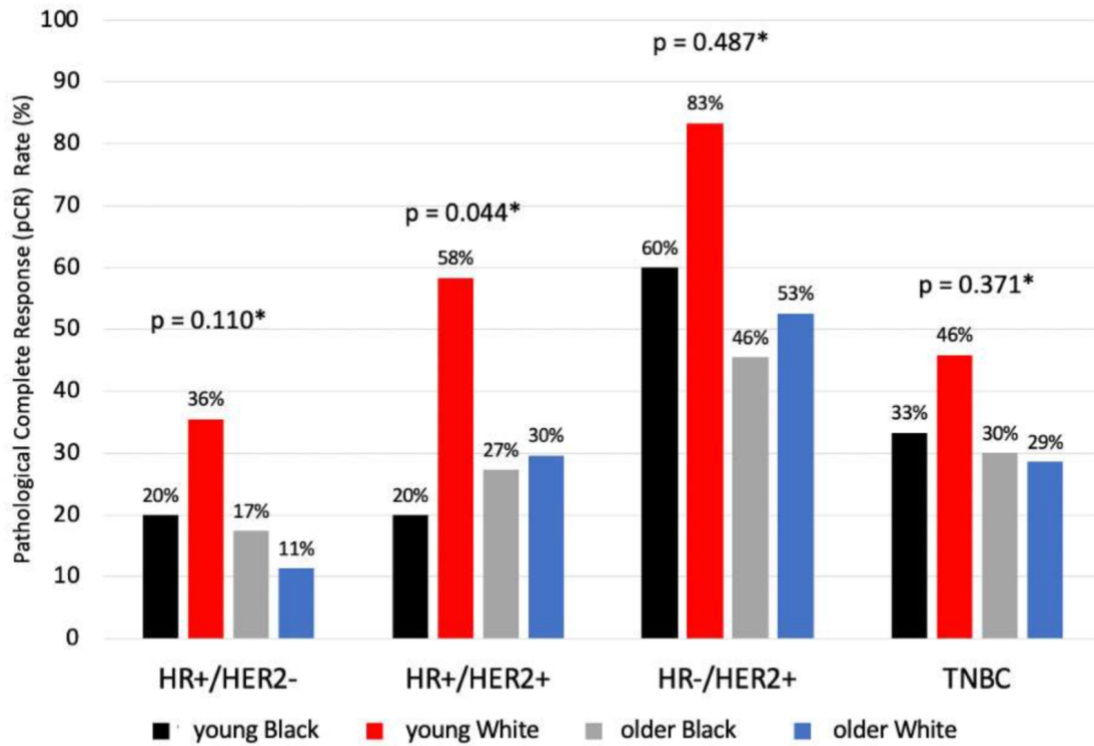


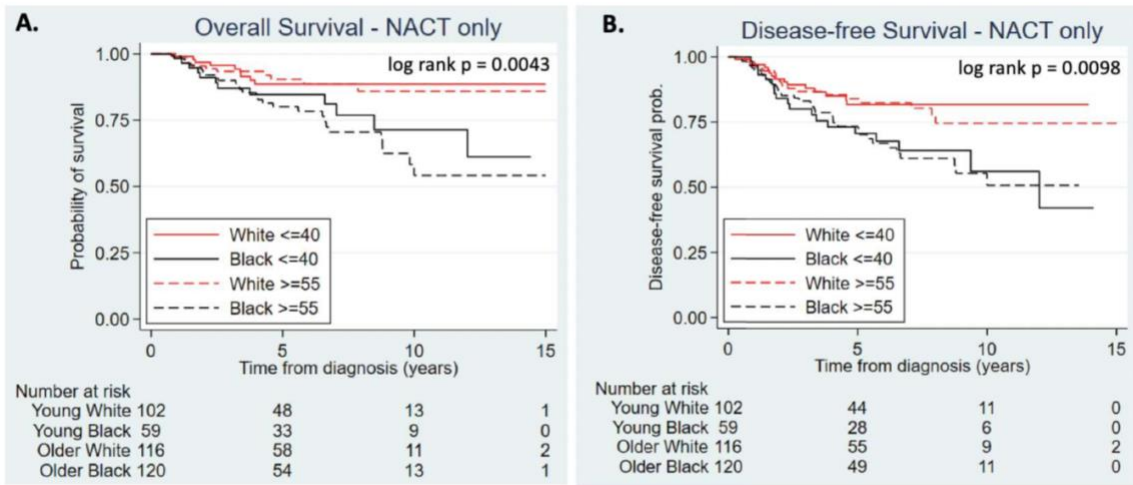
Suppl Fig. S1 A Consolidated Standards of Reporting Trials (CONSORT) diagram showing exclusion criteria and the four focus populations of the study



Suppl Fig. S2 Graph of pathological complete response rate amongst women receiving neoadjuvant chemotherapy stratified by subtype of breast cancer and age/racial groups

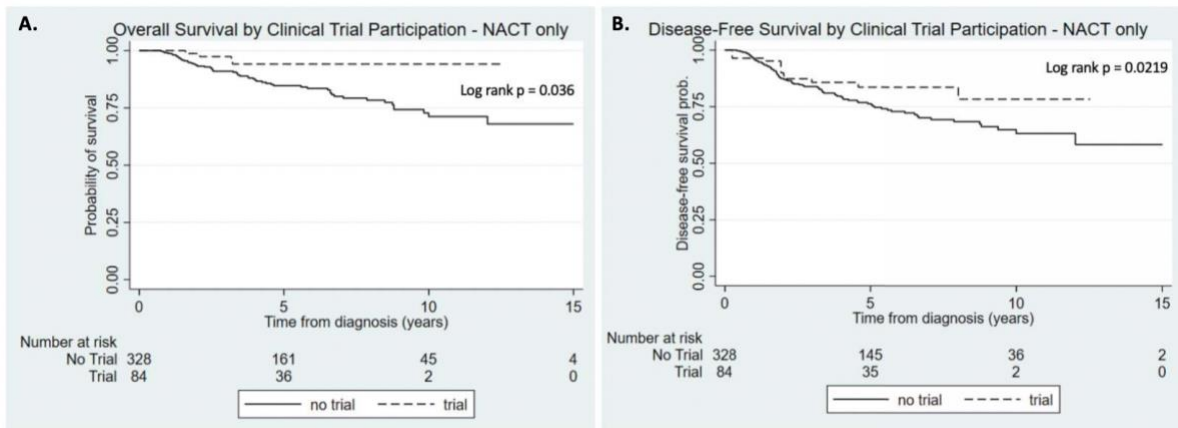
Abbreviations: pCR, pathological complete response; HER2, human epidermal growth factor receptor 2; HR, hormone receptor; TNBC, triple negative breast cancer

*p values from Chi-Squared test comparing age/racial groups within subtypes



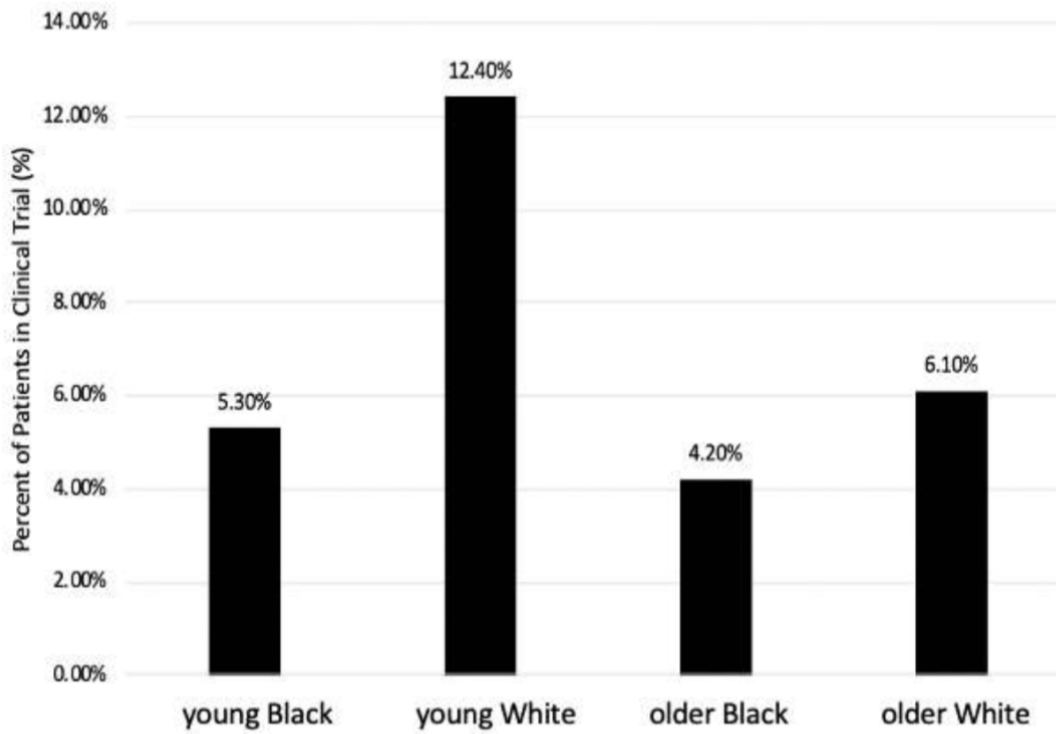
Suppl Fig. S3 Kaplan-Meier survival curves of **a)** overall survival and **b)** disease-free survival by race and age in patients receiving neoadjuvant chemotherapy

Abbreviations: NACT, neoadjuvant chemotherapy

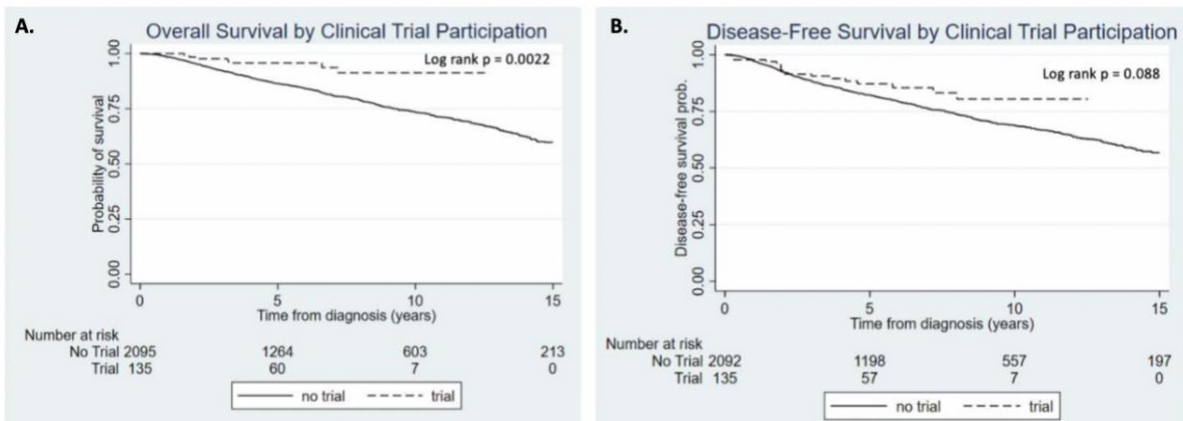


Suppl Fig. S4 Kaplan-Meier survival curves of **a)** overall survival and **b)** disease-free survival by clinical trial involvement for patients receiving neoadjuvant chemotherapy

Abbreviations: NACT, neoadjuvant chemotherapy



Suppl Fig. S5 Graph of rates of trial enrollment amongst all women with early-stage cancer between age and racial groups, $P < 0.05$ (Chi-squared test)



Suppl Fig. S6 Kaplan-Meier survival curves of a) overall survival and b) disease-free survival by clinical trial involvement