

Supplemental Table 1. Summary of statistical analysis of animal survival times.

Model IC-2305GBM	Animal Counts/Status				EFS Evaluation			P value		Toxicity	
	Group	N	Nx	Na	Nev	KM med	EFS T - C	EFS T/C	exact log-rank	Gehan-Wilcoxon	Max Avg % Weight Loss
Control (vehicle)	10	0	10	10	46.0						0.0%
Tazemetostat 250 mg/kg	10	0	10	10	60.5	14.5	1.32	< 0.001	< 0.001		0.0%
Tazemetostat 400 mg/kg	10	0	10	10	66.5	20.5	1.45	< 0.001	< 0.001		1.0%
vs Tazmetostat 250 mg/kg						6.0	1.10	0.277	0.048		
XRT	10	0	10	10	73.5	27.5	1.60	< 0.001	0.005		1.6%
vs Tazmetostat 250 mg/kg						13.0	1.21	0.012	0.035		
vs Tazmetostat 400 mg/kg						7.0	1.11	0.021	0.114		
Tazemetostat 250 mg/kg + XRT	10	0	10	10	58.0	12.0	1.26	0.002	0.002		1.4%
vs Tazmetostat 250 mg/kg						-2.5	0.96	0.257	0.423		
Model ICb-1078MB											
Control (vehicle)	10	2	8	8	49.5						0.4%
Tazemetostat 250 mg/kg	10	0	10	10	68.5	19.0	1.38	0.036	0.010		0.8%
Tazemetostat 400 mg/kg	10	1	9	9	60.0	10.5	1.21	0.427	0.282		7.7%
vs Tazmetostat 250 mg/kg						-8.5	0.88	0.341	0.065		
XRT	10	0	10	10	77.0	27.5	1.56	0.009	0.002		1.7%
vs Tazmetostat 250 mg/kg						8.5	1.12	0.151	0.184		
vs Tazmetostat 400 mg/kg						17.0	1.28	0.026	0.007		
Cisplatin	10	0	10	10	70.5	21.0	1.42	0.151	0.321		0.4%
vs Tazmetostat 250 mg/kg						2.0	1.03	0.667	0.821		
vs Tazmetostat 400 mg/kg						10.5	1.18	0.459	0.624		
Tazemetostat 250 mg/kg + XRT	10	0	10	10	108.0	58.5	2.18	0.002	< 0.001		0.6%
vs Tazmetostat 250 mg/kg						39.5	1.58	0.007	0.011		
Tazemetostat 250 mg/kg + Cis	10	0	10	10	67.5	18.0	1.36	0.164	0.145		5.9%
vs Tazmetostat 250 mg/kg						-1.0	0.99	0.993	0.598		
Tazemetostat 250 mg/kg + XRT + Cis	10	1	9	9	76.0	26.5	1.54	0.007	0.002		0.0%
vs Tazmetostat 250 mg/kg						7.5	1.11	0.259	0.164		
XRT						-32.0	0.70	0.260	0.041		
Cis						-8.5	0.89	0.578	0.176		
Model ICb-1572MB											
Control (vehicle)	10	1	9	9	25.0						NA

Tazemetostat 250 mg/kg	10	0	10	10	25.0	0.0	1.00	0.966	0.560	35.6%
Tazemetostat 400 mg/kg	10	0	10	10	27.0	2.0	1.08	0.531	0.207	30.7%
vs Tazmetostat 250 mg/kg						2.0	1.08	0.276	0.200	
XRT	10	0	10	10	21.5	-3.5	0.86	0.256	0.234	NA
vs Tazmetostat 250 mg/kg						-3.5	0.86	0.365	0.068	
vs Tazmetostat 400 mg/kg						-5.5	0.80	0.197	0.061	
Cisplatin	10	0	10	10	26.0	1.0	1.04	0.563	0.505	24.7%
vs Tazmetostat 250 mg/kg						1.0	1.04	0.623	0.848	
vs Tazmetostat 400 mg/kg						-1.0	0.96	0.346	0.279	
Tazemetostat 250 mg/kg + XRT	10	1	9	9	27.0	2.0	1.08	0.235	0.049	15.5%
vs Tazmetostat 250 mg/kg						2.0	1.08	0.021	0.023	
Tazemetostat 250 mg/kg + Cisplatin	10	0	10	10	28.0	3.0	1.12	0.267	0.063	32.4%
vs Tazmetostat 250 mg/kg						3.0	1.12	0.021	0.036	
Tazemetostat 250 mg/kg + XRT + Cis	10	0	10	10	32.0	7.0	1.28	0.112	0.004	14.1%
vs Tazmetostat 250 mg/kg						7.0	1.28	< 0.001	< 0.001	
XRT						5.0	1.19	0.024	0.013	
Cis						-4.0	0.88	0.502	0.156	
Model IC-L1115ATRT										
Control (vehicle)	10	0	10	10	70.5					2.9%
Tazemetostat 250 mg/kg	10	0	10	10	98.0	27.5	1.39	0.303	0.232	0.0%
Tazemetostat 400 mg/kg	10	0	10	10	141.5	71.0	2.01	0.006	0.006	3.0%
vs Tazmetostat 250 mg/kg						43.5	1.44	0.038	0.037	
Cisplatin	10	0	10	10	150.0	79.5	2.13	0.005	< 0.001	7.1%
vs Tazmetostat 250 mg/kg						52.0	1.53	< 0.001	< 0.001	
vs Tazmetostat 400 mg/kg						8.5	1.06	0.512	0.850	
Tazemetostat 250 mg/kg + Cisplatin	10	0	10	10	142.5	72.0	2.02	0.013	< 0.001	4.3%
vs Tazmetostat 250 mg/kg						44.5	1.45	0.034	0.008	

Glossary

N	total number of mice entering experiment
Nx	number of additional mice excluded from analysis
Na	number of mice in analysis
Nev	number of events

KM med
EFS T-C
EFS T/C

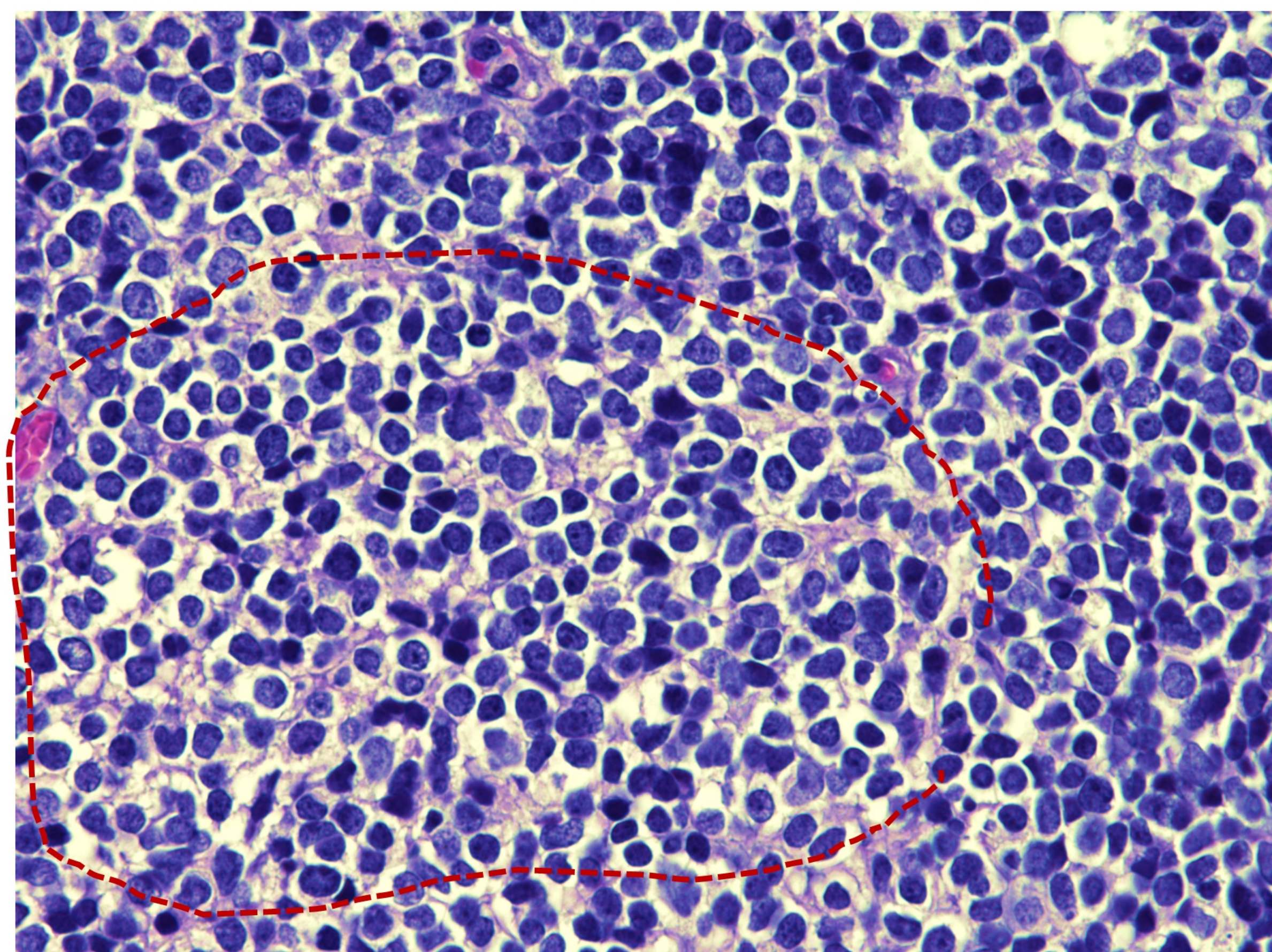
Kaplan-Meier estimate of median time-to-event (days)
Event free survival differences in days between the treated (**T**) and the control (**C**)
Fold differences of event free survival between the treated (T) and the control (C)

IC
ICb

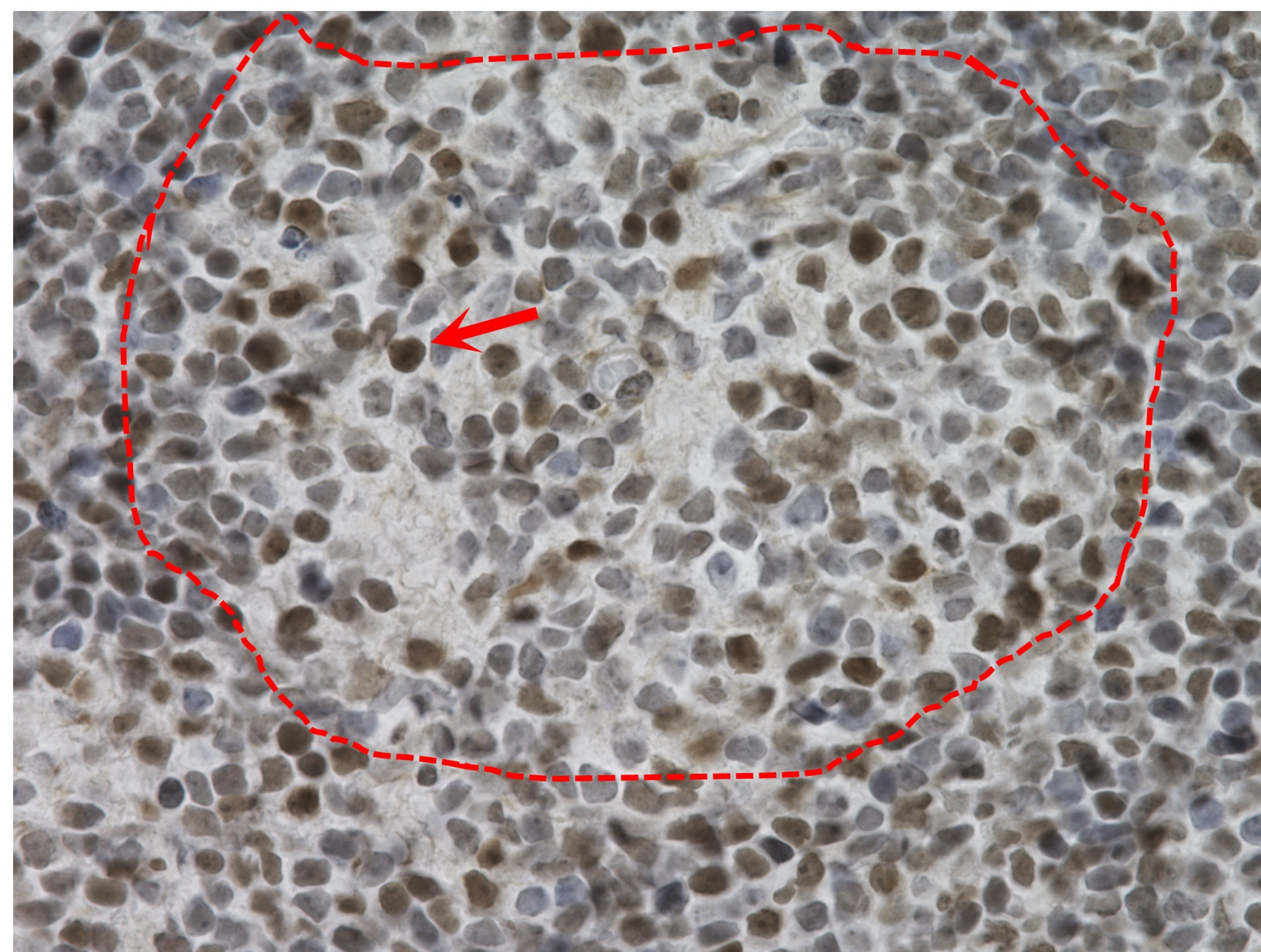
Intracerebral
Intra-cerebellar

L1115A TRT

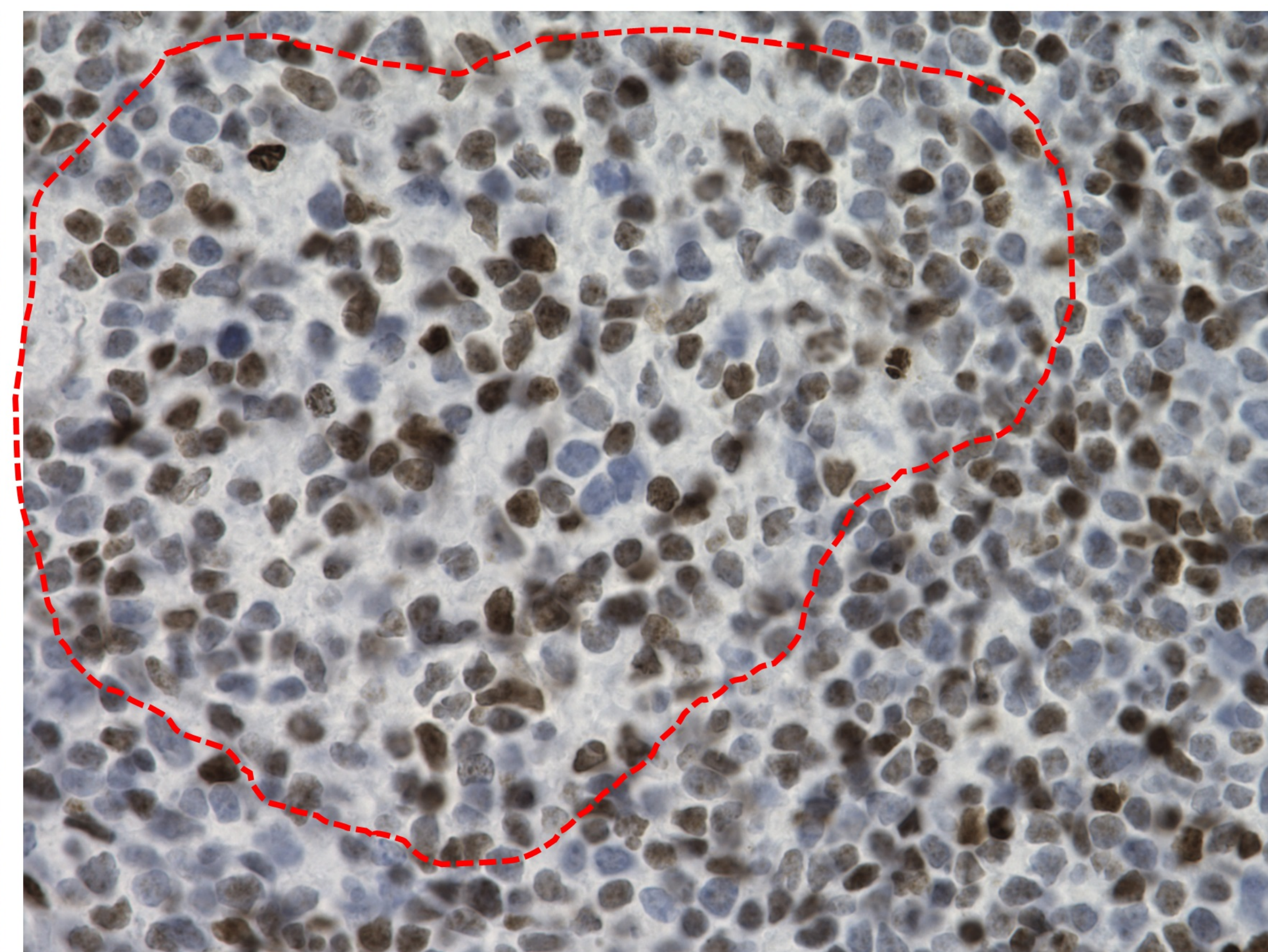
Untreated



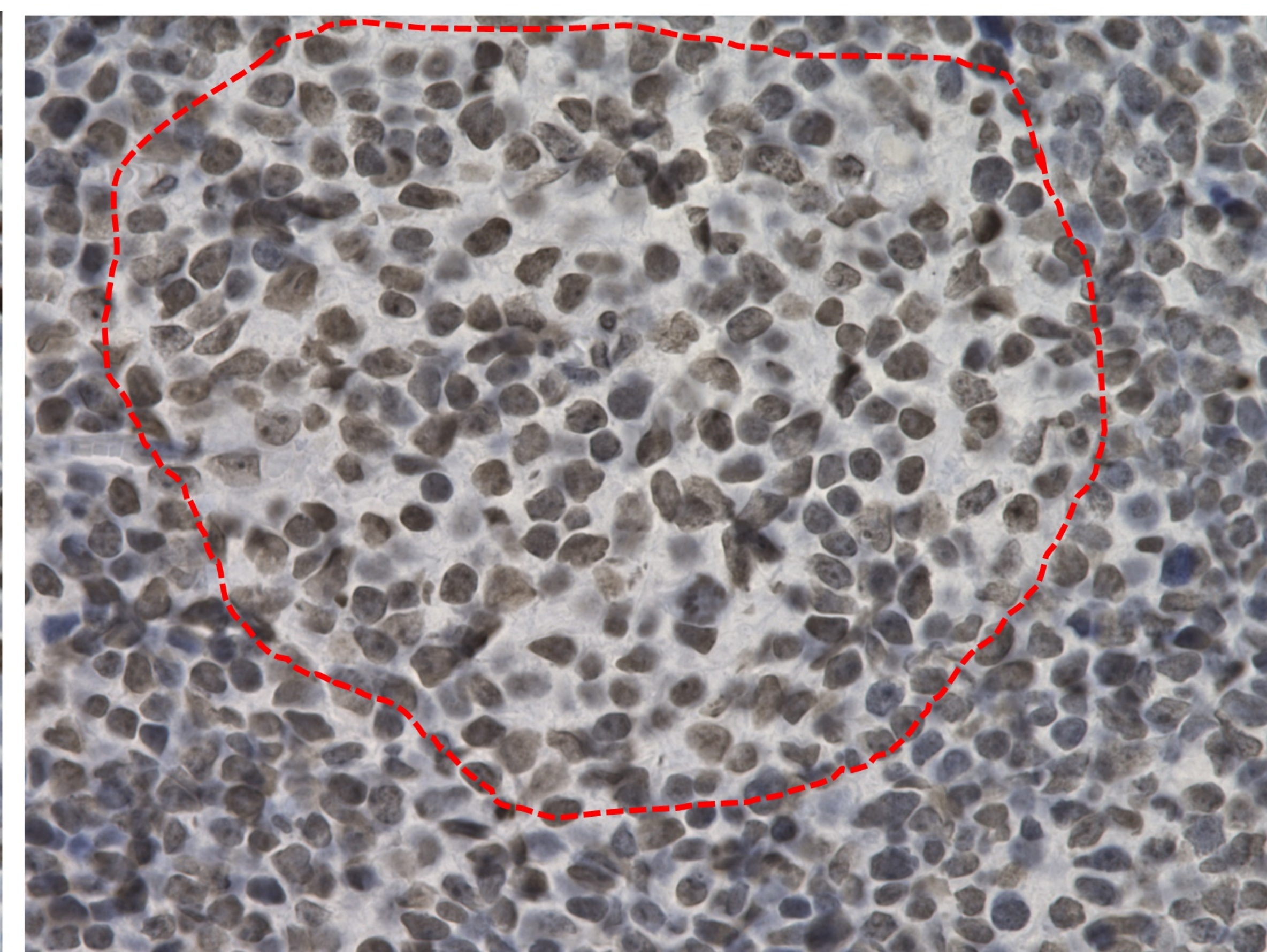
EZH2



me3



me2



H3K27

Treated

