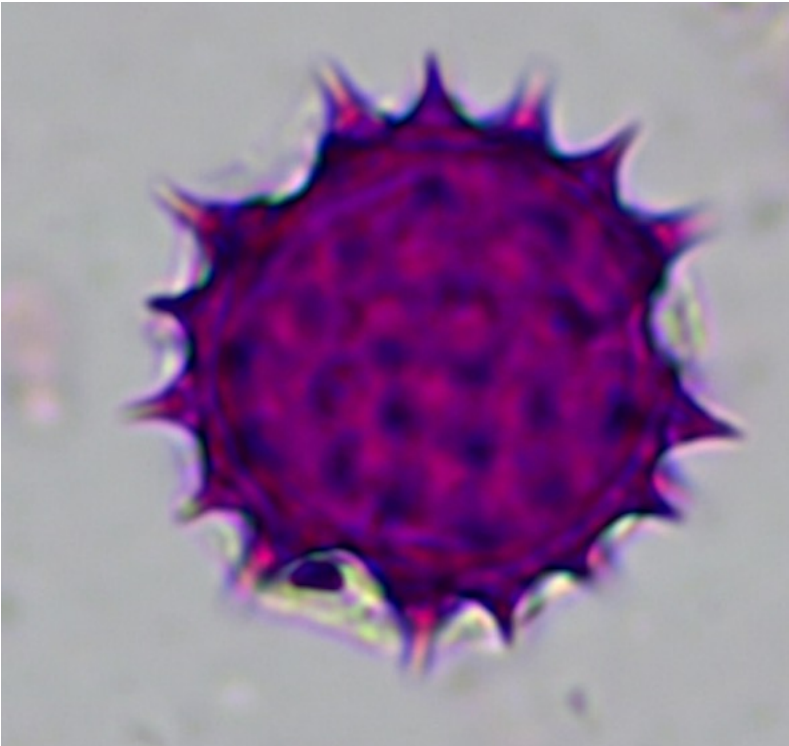
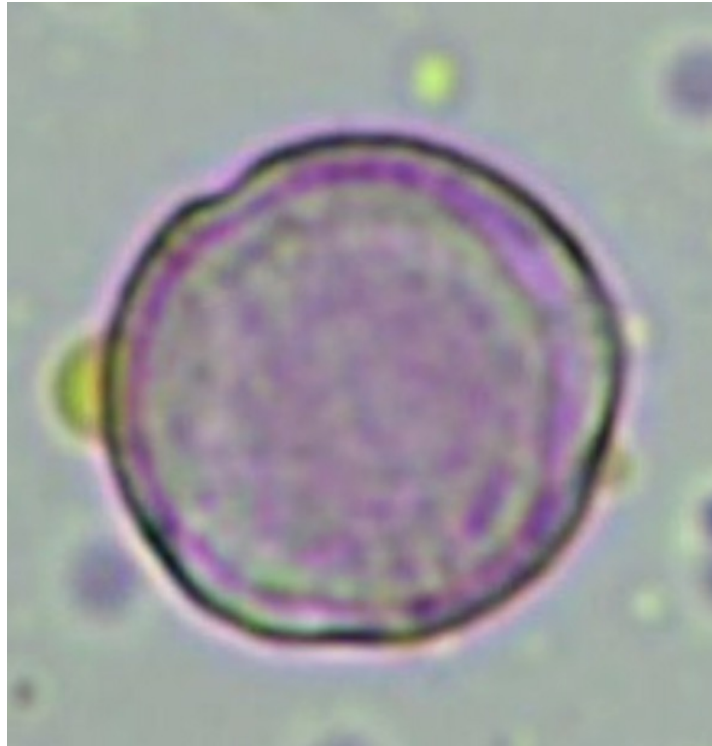
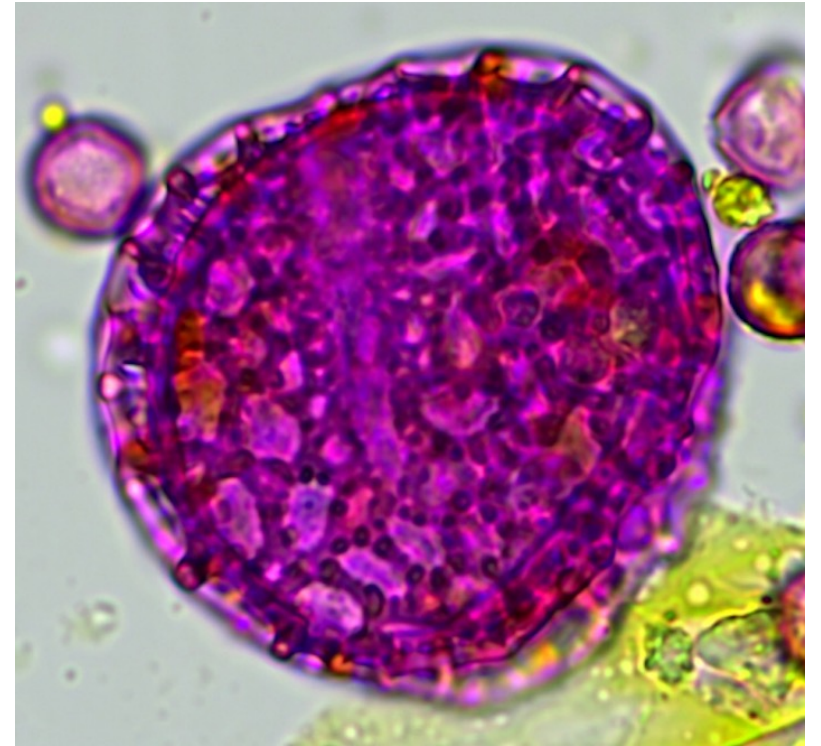


A**B****C**

Supplementary Figure 1. Examples of pollen grain pictures of three plant families commonly observed (400x) in samples of *A. mellifera* and *C. decolorata*. **(A)** Asteraceae, **(B)** Malpighiaceae, and **(C)** a large *Passiflora* pollen grain surrounded by pollen grains of *Byrsonima sp.*