

Catalog of pollen from common plant species found on Puerto Rico's coasts

Note 1: Each pollen type listed below has a 'Plant ID' that corresponds to the ID given to the pollen slide created for each plant species collected on the coast of Humacao, and a description of its morphology based on visible characteristics of the pollen grain. The collection of pollen slides is located in the laboratory of the Museum of Zoology at the UPR-RP. Pollen grains were observed using light microscopy at 400X and pictures were taken using an EP50 camera. Lastly, descriptions were assigned using the *Pollen Illustrated Terminology* by Halbritter et al. (2018).

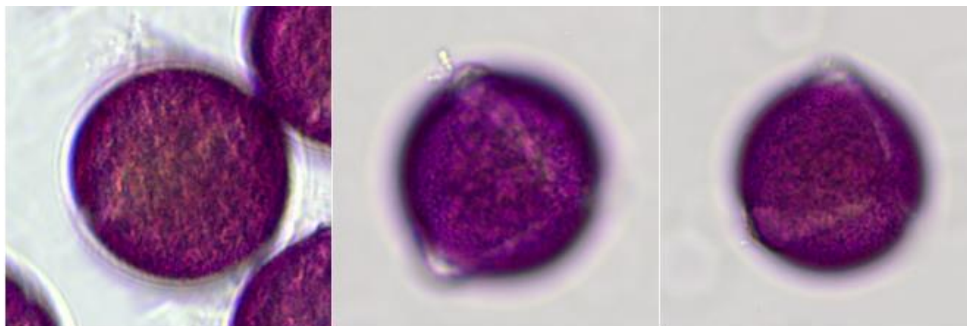
Note 2: Images of the plant pollen slides and of the bee samples are available upon request.

1. Plant ID: P1

Coccoloba uvifera

Description:

- a. **Pollen unit:** Monad
- b. **Size:** Small
- c. **Polarity:** Isopolar
- d. **Shape:** Spheroidal
- e. **Aperture type:**
- f. **Aperture condition:** Tricolporate
- g. **Ornamentation:** Verrucate



2. Plant ID: P2

Phyla nodiflora

Description:

- a. **Pollen unit:** Monad
- b. **Size:** Small
- c. **Polarity:** Isopolar
- d. **Shape:** Spheroidal
- e. **Aperture type:**
- f. **Aperture condition:** Tricolporate, coporate
- g. **Ornamentation:** NA

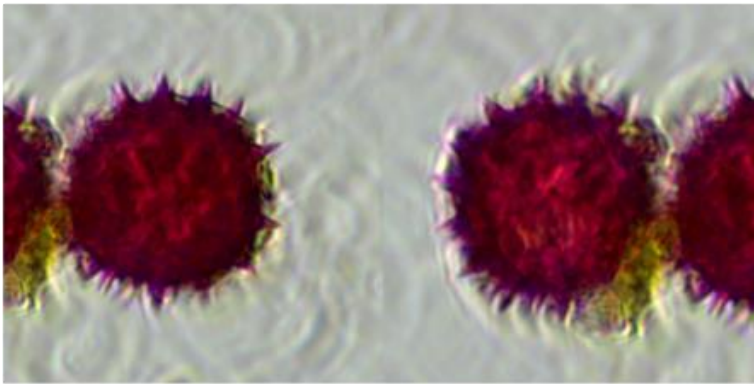


3. Plant ID: P3

Sphagneticola trilobata

Description:

- a. **Pollen unit:** Monad
- b. **Size:** Large
- c. **Polarity:** Isopolar
- d. **Shape:** Spheroidal
- e. **Aperture type:** Colporus
- f. **Aperture condition:** Colporate
- g. **Ornamentation:** Echinate

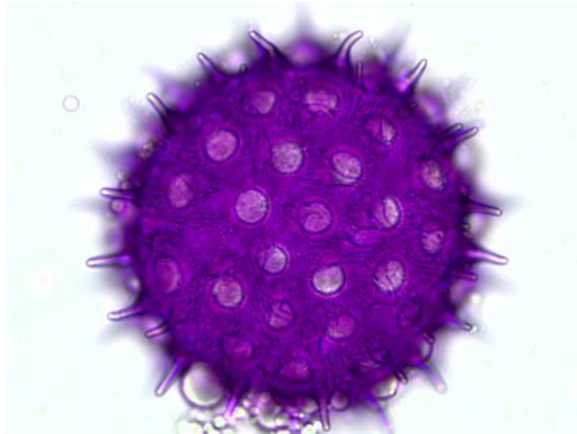


4. Plant ID: P4

Ipomoea pes-caprae (Pink/Violet)

Description:

- a. **Pollen unit:** Monad
- b. **Size:** Large
- c. **Polarity:** Isopolar
- d. **Shape:** Spheroidal
- e. **Aperture type:** Colporus
- f. **Aperture condition:** Colporate
- g. **Ornamentation:** Echinate

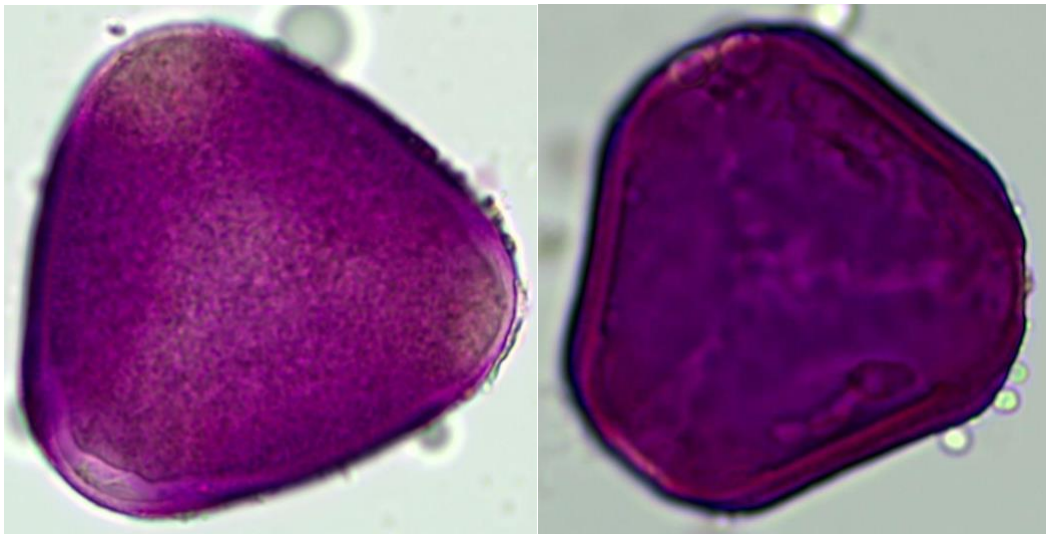


5. Plant ID: P6

Canavalia rosea

Description:

- a. Pollen unit:** Monad
- b. Size:** Small
- c. Polarity:** Isopolar
- d. Shape:** Triangular
- e. Aperture type:**
- f. Aperture condition:** Tricolporate, coporate
- g. Ornamentation:** NA



6. Plant ID: P7

Ipomea imperati

Description:

- a. Pollen unit:** Monad
- b. Size:** Large
- c. Polarity:** Isopolar
- d. Shape:** Spheroidal
- e. Aperture type:** Colporus
- f. Aperture condition:** Colporate
- g. Ornamentation:** Echinate

